

District I
1625 N. French Dr., Hobbs, NM 88240
Phone: (575) 393-6161 Fax: (575) 393-0720
District II
411 S. First St., Artesia, NM 88210
Phone: (575) 748-1283 Fax: (575) 748-9720
District III
1000 Rio Brazos Road, Aztec, NM 87410
Phone: (505) 334-6178 Fax: (505) 334-6170
District IV
1220 S. St. Francis Dr., Santa Fe, NM 87505
Phone: (505) 476-3460 Fax: (505) 476-3462

State of New Mexico
Energy, Minerals & Natural Resources Department
OIL CONSERVATION DIVISION
1220 South St. Francis Dr.
Santa Fe, NM 87505

Form C-102
Revised August 1, 2011
Submit one copy to appropriate
District Office

JUL 03 2018

AMENDED REPORT

WELL LOCATION AND ACREAGE DEDICATION

LAPI Number 70-023-44967	Pool Code 96553	Pool Name Ojo-Chiso, Bone Spring
Property Code 318011	Property Name JUICE BUD STATE COM	Well Number 502H
UGRID No. 372165	Operator Name CENTENNIAL RESOURCE PRODUCTION, LLC	Elevation 3742.2'

Surface Location

UL or lot no.	Section	Township	Range	Lot Idn	Feet from the	North/South line	Feet from the	East/West line	County
N	19	21S	34E		600	SOUTH	1963	WEST	LEA

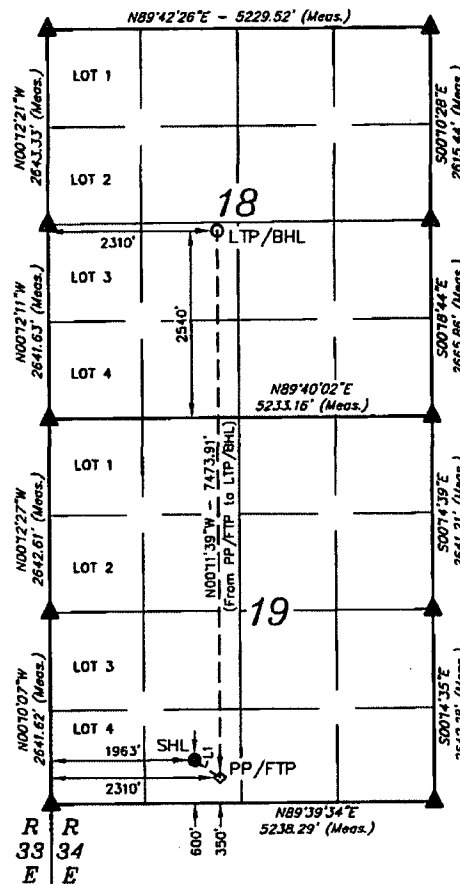
Bottom Hole Location If Different From Surface

UL or lot no.	Section	Township	Range	Lot Idn	Feet from the	North/South line	Feet from the	East/West line	County
K	18	21S	34E		2540	SOUTH	2310	WEST	LEA
Dedicated Acres 240	Joint or Infill	Consolidation Code	Order No.						

No allowable will be assigned to this completion until all interests have been consolidated or a non-standard unit has been approved by the division.

HOBBES OCD
JUL 06 2018
RECEIVED

LINE TABLE		
LINE	DIRECTION	LENGTH
L1	S54°30'19"E	427.11'



NAD 83 (SURFACE HOLE LOCATION)	
LATITUDE = 32°27'31.25" (32.458681°)	
LONGITUDE = 103°30'40.25" (103.511179°)	
STATE PLANE NAD 83 (N.M. EAST)	
Y: 531575.49' X: 794922.32'	
UTM, NAD 83 (ZONE 13)	
Y: 11785508.92' X: 2099501.09'	

NAD 83 (PP/FTP)	
LATITUDE = 32°27'31.79" (32.457994°)	
LONGITUDE = 103°30'36.20" (103.510055°)	
STATE PLANE NAD 83 (N.M. EAST)	
Y: 531529.01' X: 795270.94'	
UTM, NAD 83 (ZONE 13)	
Y: 11785134.66' X: 2099851.24'	

NAD 83 (LTP/BHL)	
LATITUDE = 32°28'42.73" (32.478535°)	
LONGITUDE = 103°30'36.19" (103.510052°)	
STATE PLANE NAD 83 (N.M. EAST)	
Y: 538801.47' X: 795214.12'	
UTM, NAD 83 (ZONE 13)	
Y: 11792815.57' X: 2099747.80'	



- SCALE
DRAWN BY: C.D. 05-28-18
- = SURFACE HOLE LOCATION
 - ◇ = PP/FTP
 - = LTP/BHL
 - ▲ = SECTION CORNER LOCATED

NOTE:
• Distances referenced on plat to section lines are perpendicular.
• Basis of Bearing is a Transverse Mercator Projection with a Central Meridian of W101°53'00"

OPERATOR CERTIFICATION

I hereby certify that the information contained herein is true and complete to the best of my knowledge and belief, and that this organization either owns a working interest or unleased mineral interest in the land including the proposed bottom hole location or has a right to drill this well at this location pursuant to a contract with an owner of such a mineral or working interest, or to a voluntary pooling agreement or a compulsory pooling order heretofore entered by the division.

Signature: *Sarah Ferreyros* Date: 07/03/2018

Printed Name

Sarah Ferreyros

E-mail Address

Sarah.Ferreyros@cdevinc.com

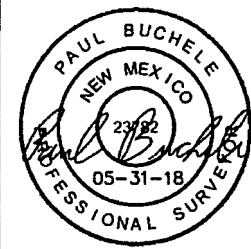
SURVEYOR CERTIFICATION

I hereby certify that the well location shown on this plat was plotted from field notes of actual surveys made by me or under my supervision, and that the same is true and correct to the best of my belief.

May 24, 2018

Date of Survey

Signature and Seal of Professional Surveyor:



Certificate Number: