

District I  
1625 N. French Dr., Hobbs, NM 88240  
Phone: (575) 393-6161 Fax: (575) 393-0720  
District II  
811 S. First St., Artesia, NM 88210  
Phone: (575) 748-1283 Fax: (575) 748-9720  
District III  
1000 Rio Brazos Road, Aztec, NM 87410  
Phone: (505) 334-6178 Fax: (505) 334-6170  
District IV  
1220 S. St. Francis Dr., Santa Fe, NM 87505  
Phone: (505) 476-3460 Fax: (505) 476-3462

State of New Mexico  
Energy, Minerals & Natural Resources  
Department  
OIL CONSERVATION DIVISION  
1220 South St. Francis Dr.  
Santa Fe, NM 87505

**HOBBS OCD**

FORM C-102

Revised August 1, 2011

**JUL 11 2018** Submit one copy to appropriate

District Office

**RECEIVED**

☐ AMENDED REPORT

**WELL LOCATION AND ACREAGE DEDICATION PLAT**

<sup>1</sup> API Number 30-025- <b>44506</b>	<sup>2</sup> Pool Code 7280	<sup>3</sup> Pool Name Bradley; Bone Spring
<sup>4</sup> Property Code 40383	<sup>5</sup> Property Name <b>NAUTILUS 16 STATE COM</b>	
<sup>7</sup> OGRID No. 7377	<sup>8</sup> Operator Name <b>EOG RESOURCES, INC.</b>	<sup>6</sup> Well Number <b>#602H</b> <sup>9</sup> Elevation <b>3322'</b>

**<sup>10</sup>Surface Location**

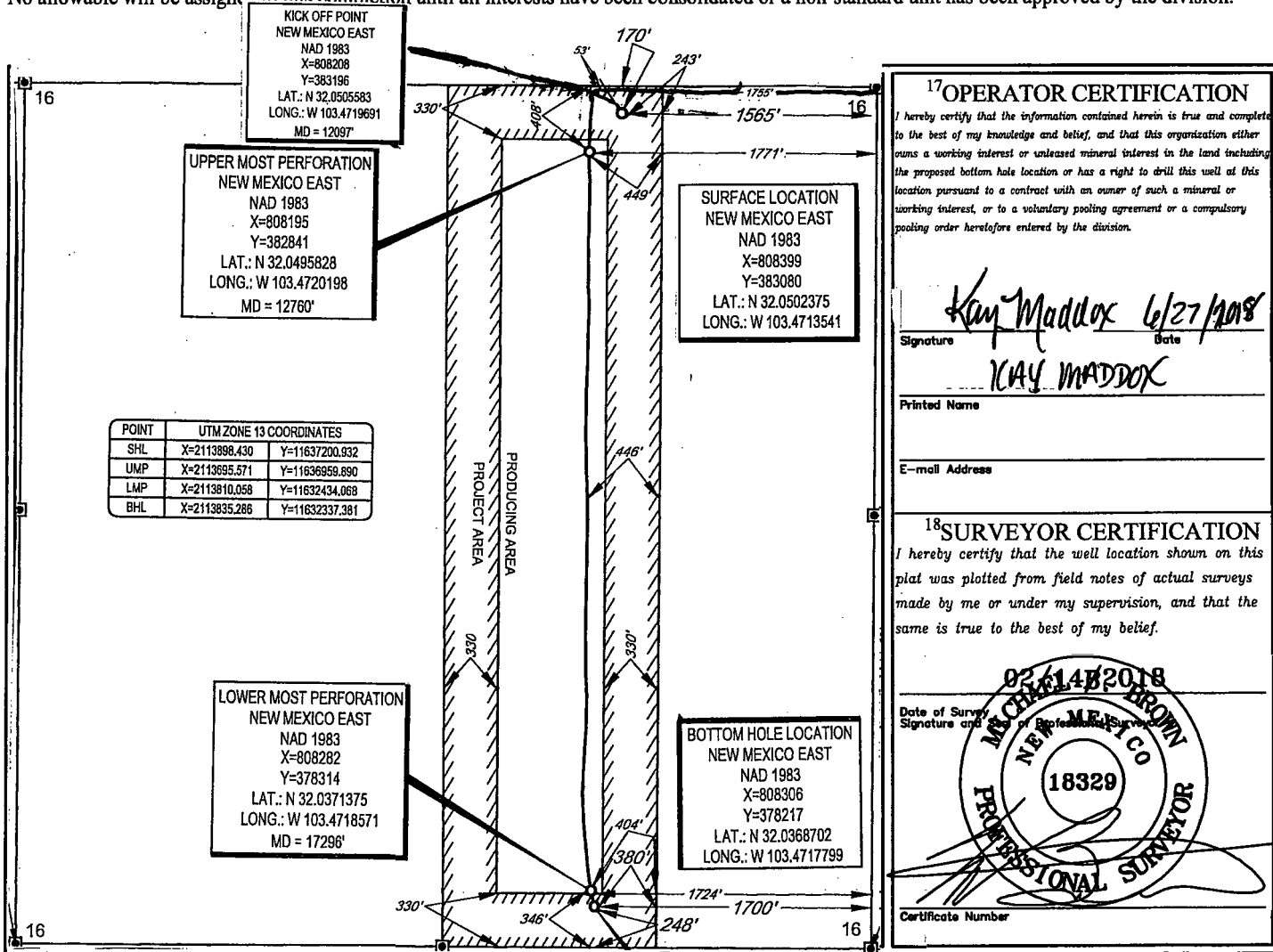
UL or lot no.	Section	Township	Range	Lot Idn	Feet from the	North/South line	Feet from the	East/West line	County
<b>B</b>	<b>16</b>	<b>26-S</b>	<b>34-E</b>	<b>-</b>	<b>170'</b>	<b>NORTH</b>	<b>1565'</b>	<b>EAST</b>	<b>LEA</b>

**<sup>11</sup>Bottom Hole Location If Different From Surface**

UL or lot no.	Section	Township	Range	Lot Idn	Feet from the	North/South line	Feet from the	East/West line	County
<b>0</b>	<b>16</b>	<b>26-S</b>	<b>34-E</b>	<b>-</b>	<b>248'</b>	<b>SOUTH</b>	<b>1700'</b>	<b>EAST</b>	<b>LEA</b>

<sup>12</sup> Dedicated Acres <b>160.00</b>	<sup>13</sup> Joint or Infill	<sup>14</sup> Consolidation Code	<sup>15</sup> Order No.
--	-------------------------------	----------------------------------	-------------------------

No allowable will be assigned to this completion until all interests have been consolidated or a non-standard unit has been approved by the division.



**<sup>17</sup>OPERATOR CERTIFICATION**

I hereby certify that the information contained herein is true and complete to the best of my knowledge and belief, and that this organization either owns a working interest or unleased mineral interest in the land including the proposed bottom hole location or has a right to drill this well at this location pursuant to a contract with an owner of such a mineral or working interest, or to a voluntary pooling agreement or a compulsory pooling order heretofore entered by the division.

*Kay Maddox* 6/27/2018  
Signature Date

**KAY MADDOX**  
Printed Name

E-mail Address

**<sup>18</sup>SURVEYOR CERTIFICATION**

I hereby certify that the well location shown on this plat was plotted from field notes of actual surveys made by me or under my supervision, and that the same is true to the best of my belief.

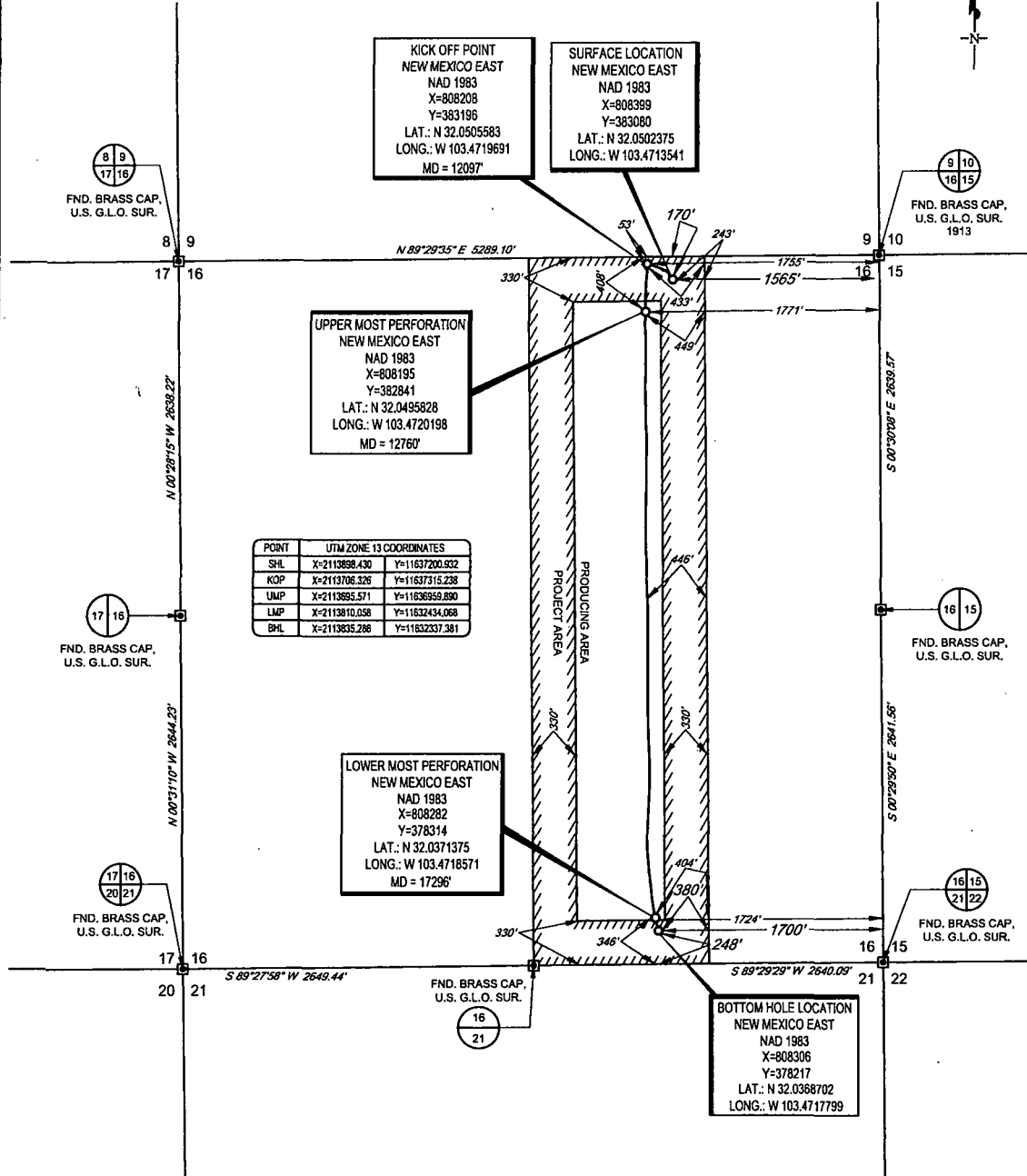
Date of Survey  
Signature and Seal of Professional Surveyor

**MICHAEL BROWN**  
NEW MEXICO  
18329  
PROFESSIONAL SURVEYOR

Certificate Number

SCALE: 1" = 1000'  
0' 500' 1000'

SECTION 16, TOWNSHIP 26-S, RANGE 34-E, N.M.P.M.  
LEA COUNTY, NEW MEXICO



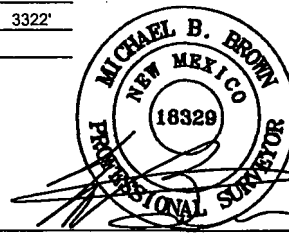
POINT	UTM ZONE 13 COORDINATES
SHL	X=2113898.430 Y=11637200.822
KOP	X=2113706.326 Y=11637315.238
UMP	X=2113885.571 Y=11636959.890
LMP	X=2113810.058 Y=11632434.068
BHL	X=2113835.286 Y=11632337.381

LEASE NAME & WELL NO.: NAUTILUS 16 STATE COM #602H  
SECTION 16 TWP 26-S RGE 34-E SURVEY N.M.P.M.  
COUNTY LEA STATE NM ELEVATION 3322'  
DESCRIPTION 170' FNL & 1565' FEL



**TOPOGRAPHIC**  
LOYALTY INNOVATION LEGACY

1400 EVERMAN PARKWAY, Ste. 146 • FT. WORTH, TEXAS 76140  
TELEPHONE: (817) 744-7512 • FAX (817) 744-7548  
2903 NORTH BIG SPRING • MIDLAND, TEXAS 79705  
TELEPHONE: (432) 682-1653 OR (800) 767-1653 • FAX (432) 682-1743  
WWW.TOPOGRAPHIC.COM



Michael Blake Brown, P.S. No. 18329  
JUNE 12, 2018

**Geog resources, Inc.**

NAUTILUS 16 STATE COM #602H AS-COMplete		REVISION:
DATE: 06/12/2018		
FILE: AD_NAUTILUS16STATECOM_602H_REV1		
DRAWN BY: JLS		
SHEET: 1 OF 1		

NOTES:  
1. ORIGINAL DOCUMENT SIZE: 8.5" X 14"  
2. ALL BEARINGS, DISTANCES, AND COORDINATE VALUES CONTAINED HEREIN ARE GRID BASED UPON THE NEW MEXICO COORDINATE SYSTEM OF 1983, EAST ZONE, U.S. SURVEY FEET.  
3. THIS WELL LOCATION SHOWN HEREON HAS BEEN SURVEYED ON THE GROUND UNDER MY SUPERVISION AND PREPARED ACCORDING TO THE EVIDENCE FOUND AT THE TIME OF SURVEY, AND DATA PROVIDED BY GEO RESOURCES, INC. THIS CERTIFICATION IS MADE AND LIMITED TO THOSE PERSONS OR ENTITIES SHOWN ON THE FACE OF THIS PLAT AND IS NON-TRANSFERABLE. THIS SURVEY IS CERTIFIED FOR THIS TRANSACTION ONLY.