

DISTRICT I
1626 N. French Dr., Hobbs, NM 88240
Phone (575) 393-5161 Fax: (575) 393-0720

DISTRICT II
811 S. First St., Artesia, NM 88210
Phone (505) 334-6176 Fax: (505) 334-6170

DISTRICT III
1000 Rio Brazos Rd., Aztec, NM 87410
Phone (505) 334-6176 Fax: (505) 334-6170

DISTRICT IV
1220 S. St. Francis Dr., Santa Fe, NM 87505
Phone (505) 476-3460 Fax: (505) 476-3462

State of New Mexico
Energy, Minerals and Natural Resources Department

Form C-102
Revised August 4, 2011

Submit one copy to appropriate
District Office

OIL CONSERVATION DIVISION
1220 South St. Francis Dr.
Santa Fe, New Mexico 87505

WELL LOCATION AND ACREAGE DEDICATION PLAT

☐ AMENDED REPORT

API Number	Pool Code	Pool Name
Property Code	Property Name MERCHANT STATE UNIT	Well Number 506H
OGRID No.	Operator Name ADVANCE ENERGY PARTNERS HAT MESA	Elevation 3656

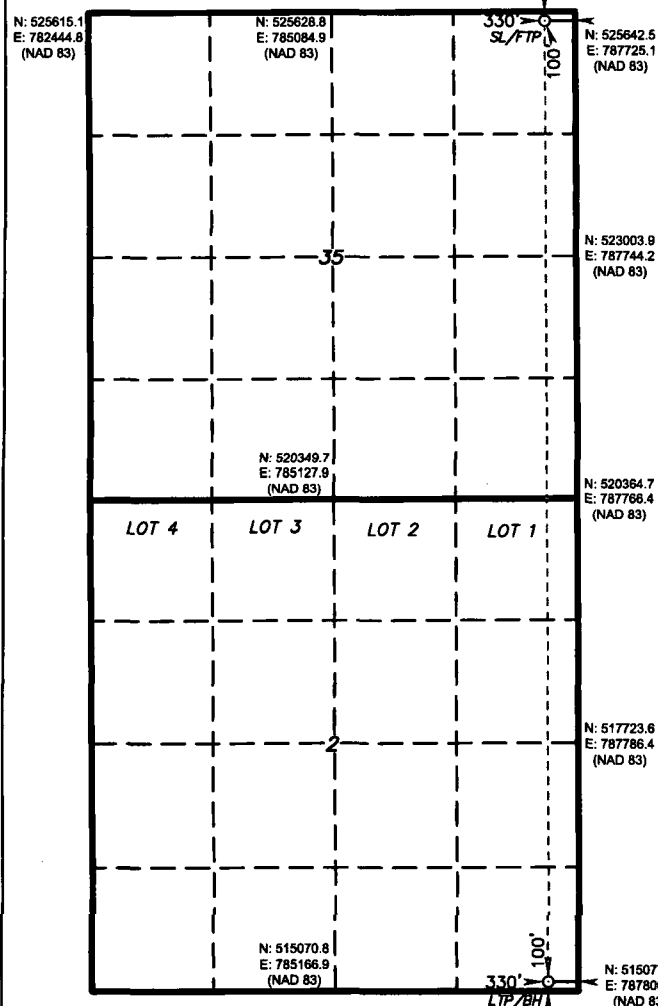
Surface Location

UL or lot No.	Section	Township	Range	Lot Idn	Feet from the	SOUTH/South line	Feet from the	East/West line	County
A	35	21 S	33 E		100	NORTH	330	EAST	LEA

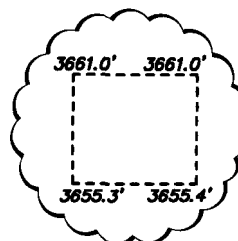
Bottom Hole Location If Different From Surface

UL or lot No.	Section	Township	Range	Lot Idn	Feet from the	SOUTH/South line	Feet from the	East/West line	County
P	2	22 S	33 E		100	SOUTH	330	EAST	LEA
Dedicated Acres	Joint or Infill	Consolidation Code	Order No.						

NO ALLOWABLE WILL BE ASSIGNED TO THIS COMPLETION UNTIL ALL INTERESTS HAVE BEEN CONSOLIDATED
OR A NON-STANDARD UNIT HAS BEEN APPROVED BY THE DIVISION



FIRST TAKE POINT
SURFACE LOCATION
Lat - N 32.442251°
Long - W 103.535725°
NMSPC-E N 525540.6
E 787395.7
(NAD-83)



LAST TAKE POINT
BOTTOM HOLE LOCATION
Lat - N 32.413763°
Long - W 103.535717°
NMSPC-E N 515176.7
E 787475.7
(NAD-83)

OPERATOR CERTIFICATION

I hereby certify that the information contained herein is true and complete to the best of my knowledge and belief, and that this organization either owns a working interest or undivided mineral interest in the land including the proposed bottom hole location or has a right to drill this well at this location pursuant to a contract with an owner of such a mineral or working interest, or to a voluntary pooling agreement or a compulsory pooling order heretofore entered by the division.

Signature _____ Date _____

Printed Name _____

Email Address _____

SURVEYOR CERTIFICATION

I hereby certify that the well location shown on this plat was plotted from field notes of actual surveys made by me or under my supervision and that the same is true and correct to the best of my belief.

Date Surveyed _____

Signature & Seal of Professional Surveyor

Certificate No. 7977

0' 500' 1000' 1500' 2000'
SCALE: 1" = 1000'
WO Num.: 33697