

District I  
1625 N. French Dr., Hobbs, NM 88201  
Phone: (575) 393-6161 Fax: (575) 393-0720  
District II  
811 S. First St., Artesia, NM 88210  
Phone: (575) 748-1283 Fax: (575) 748-9720  
District III  
1000 Rio Brazos Road, Aztec, NM 87410  
Phone: (505) 334-6178 Fax: (505) 334-6170  
District IV  
1220 S. St. Francis Dr., Santa Fe, NM 87505  
Phone: (505) 476-3460 Fax: (505) 476-3462

State of New Mexico  
Energy, Minerals & Natural Resources  
Department  
OIL CONSERVATION DIVISION  
1220 South St. Francis Dr.  
Santa Fe, NM 87505

FORM C-102

Revised August 1, 2011

Submit one copy to appropriate

District Office

☐ AMENDED REPORT

WELL LOCATION AND ACREAGE DEDICATION PLAT

<sup>1</sup> API Number 30-025-44626	<sup>2</sup> Pool Code 96682	<sup>3</sup> Pool Name Triste Draw; Bone Spring East
<sup>4</sup> Property Code 320644	<sup>5</sup> Property Name BANDIT 29 STATE COM	<sup>6</sup> Well Number #504Y
<sup>7</sup> OGRID No. 7377	<sup>8</sup> Operator Name EOG RESOURCES, INC.	<sup>9</sup> Elevation 3533'

<sup>10</sup>Surface Location

UL or lot no. B	Section 29	Township 24-S	Range 33-E	Lot Idn -	Feet from the 410'	North/South line NORTH	Feet from the 2211'	East/West line EAST	County LEA
--------------------	---------------	------------------	---------------	--------------	-----------------------	---------------------------	------------------------	------------------------	---------------

UL or lot no. G	Section 32	Township 24-S	Range 33-E	Lot Idn -	Feet from the 2404	North/South line NORTH	Feet from the 2533'	East/West line EAST	County LEA
--------------------	---------------	------------------	---------------	--------------	-----------------------	---------------------------	------------------------	------------------------	---------------

<sup>12</sup> Dedicated Acres 240.00	<sup>13</sup> Joint or Infill	<sup>14</sup> Consolidation Code	<sup>15</sup> Order No.
---	-------------------------------	----------------------------------	-------------------------

KICK OFF POINT  
NEW MEXICO EAST  
NAD 1983  
X=770120  
Y=435698  
LAT.: N 32.1956474  
LONG.: W 103.5937303  
MD = 10664'

UPPER MOST PERFORATION  
NEW MEXICO EAST  
NAD 1983  
X=770074  
Y=435260  
LAT.: N 32.1944459  
LONG.: W 103.5938883  
MD = 11400'

LOWER MOST PERFORATION  
NEW MEXICO EAST  
NAD 1983  
X=770094  
Y=428221  
LAT.: N 32.1750954  
LONG.: W 103.5939806  
MD = 18443'

SURFACE LOCATION  
NEW MEXICO EAST  
NAD 1983  
X=770373  
Y=435381  
LAT.: N 32.1947717  
LONG.: W 103.5929216

BOTTOM HOLE LOCATION  
NEW MEXICO EAST  
NAD 1983  
X=770101  
Y=428105  
LAT.: N 32.1747770  
LONG.: W 103.5939612  
MD = 18559'

assigned to this completion until all interests have been consolidated or a non-standard unit has been approved by

SEE DETAIL A

SEE DETAIL B

PRODUCING AREA

PROTECT AREA

FND. BRASS CAP,  
U.S. G.L.O. SUR.

FND. BRASS CAP,  
U.S. G.L.O. SUR.

FND. BRASS CAP,  
U.S. G.L.O. SUR.

FND. BRASS CAP,  
U.S. G.L.O. SUR.

DETAIL VIEW B  
SCALE: 1" = 500'

DETAIL VIEW A  
SCALE: 1" = 600'

POINT UTM ZONE 13 COORDINATES

SHL	X=2075554.115	Y=11689257.496
UMP	X=2075286.702	Y=11689135.099
LMP	X=2075320.170	Y=116892096.664
BHL	X=2075327.681	Y=11681980.941

<sup>17</sup>OPERATOR CERTIFICATION

hereby certify that the information contained herein is true and complete to the best of my knowledge and belief, and that this organization either owns a working interest or unleased mineral interest in the land including the proposed bottom hole location or has a right to drill this well at this location pursuant to a contract with an owner of such a mineral or working interest, or to a voluntary pooling agreement or a compulsory pooling order heretofore entered by the division.

Signature: Kay Maddox 7/12/18

Printed Name: KAY MADDOX

E-mail Address:

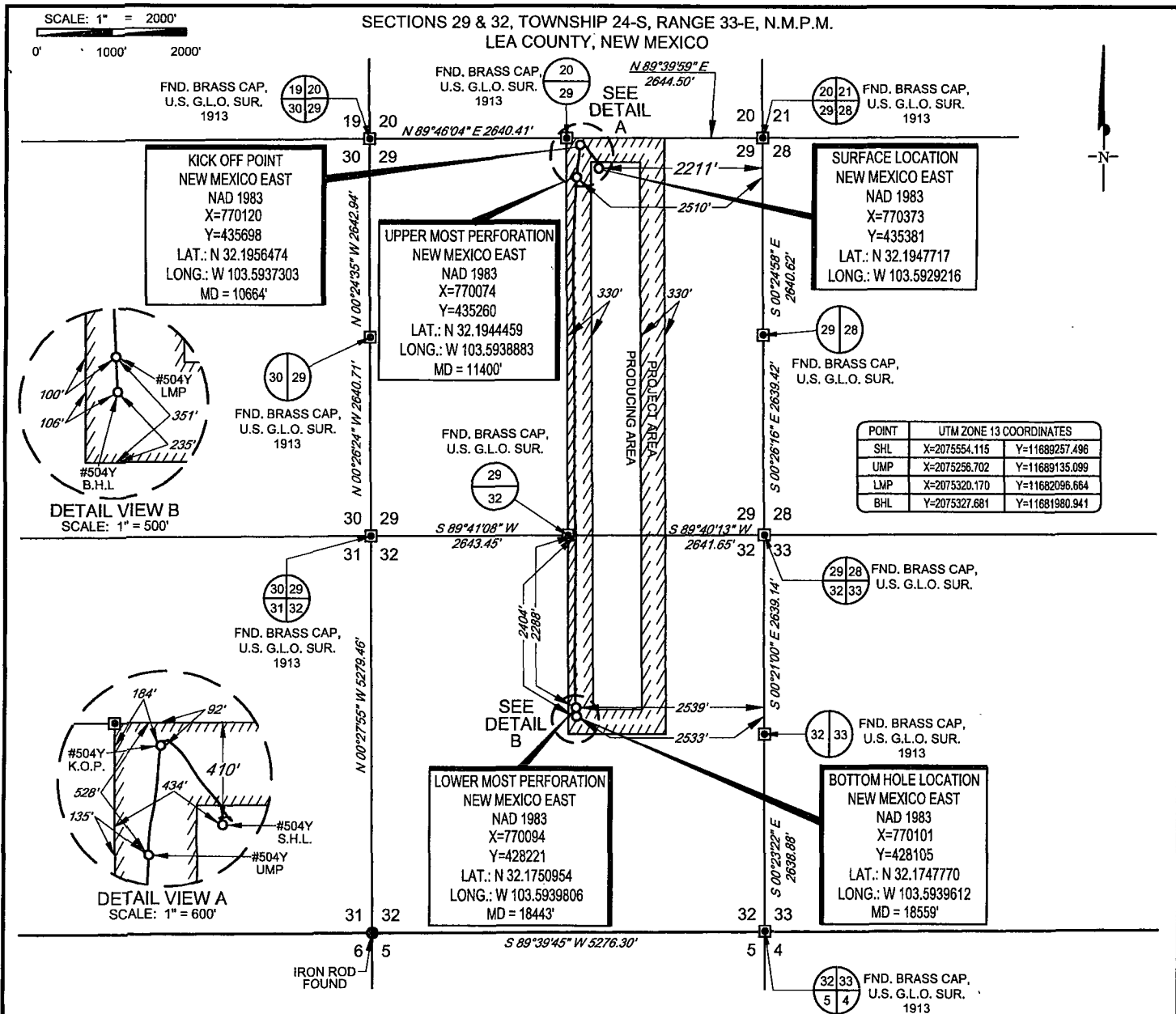
<sup>18</sup>SURVEYOR CERTIFICATION

hereby certify that the well location shown on this plat was plotted from field notes of actual surveys made by me or under my supervision, and that the same is true to the best of my belief.

Date of Survey: 08/30/2018

Signature and Seal of Professional Surveyor: MICHAEL B. BROWN

Certificate Number: 18329



LEASE NAME & WELL NO.: BANDIT 29 STATE COM #504Y

SECTION 29 TWP 24-S RGE 33-E SURVEY N.M.P.M.

COUNTY LEA STATE NM ELEVATION 3533'

DESCRIPTION 410' FNL & 2211' FEL



**TOPOGRAPHIC**  
LOYALTY INNOVATION LEGACY

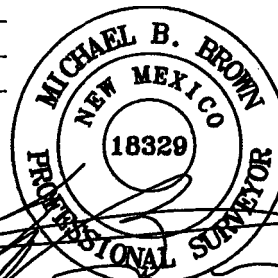
1400 EVERMAN PARKWAY, Ste. 146 • FT. WORTH, TEXAS 76140

TELEPHONE: (817) 744-7512 • FAX (817) 744-7554

2903 NORTH BIG SPRING • MIDLAND, TEXAS 79705

TELEPHONE: (432) 682-1653 OR (800) 767-1653 • FAX (432) 682-1743

WWW.TOPOGRAPHIC.COM



Michael Blake Brown, P.S. No. 18329

MAY 17, 2018

**eoog resources, Inc.**

BANDIT 29 STATE COM #504Y AS-COMPLETED	REVISION:
DATE: 05/17/2018	
FILE: AD_BANDIT_29_STATE_COM_504Y	
DRAWN BY: A.V.F.	
SHEET: 1 OF 1	

NOTES:

1. ORIGINAL DOCUMENT SIZE: 8.5" X 11"
2. ALL BEARINGS, DISTANCES, AND COORDINATE VALUES CONTAINED HEREIN ARE GRID BASED UPON THE NEW MEXICO COORDINATE SYSTEM OF 1983, EAST ZONE, U.S. SURVEY FEET.
3. THIS WELL LOCATION SHOWN HEREON HAS BEEN SURVEYED ON THE GROUND UNDER MY SUPERVISION AND PREPARED ACCORDING TO THE EVIDENCE FOUND AT THE TIME OF SURVEY, AND DATA PROVIDED BY EOG RESOURCES, INC. THIS CERTIFICATION IS MADE AND LIMITED TO THOSE PERSONS OR ENTITIES SHOWN ON THE FACE OF THIS PLAT AND IS NON-TRANSFERABLE. THIS SURVEY IS CERTIFIED FOR THIS TRANSACTION ONLY.