

HOBBS OCD
 JUL 17 2018
 RECEIVED

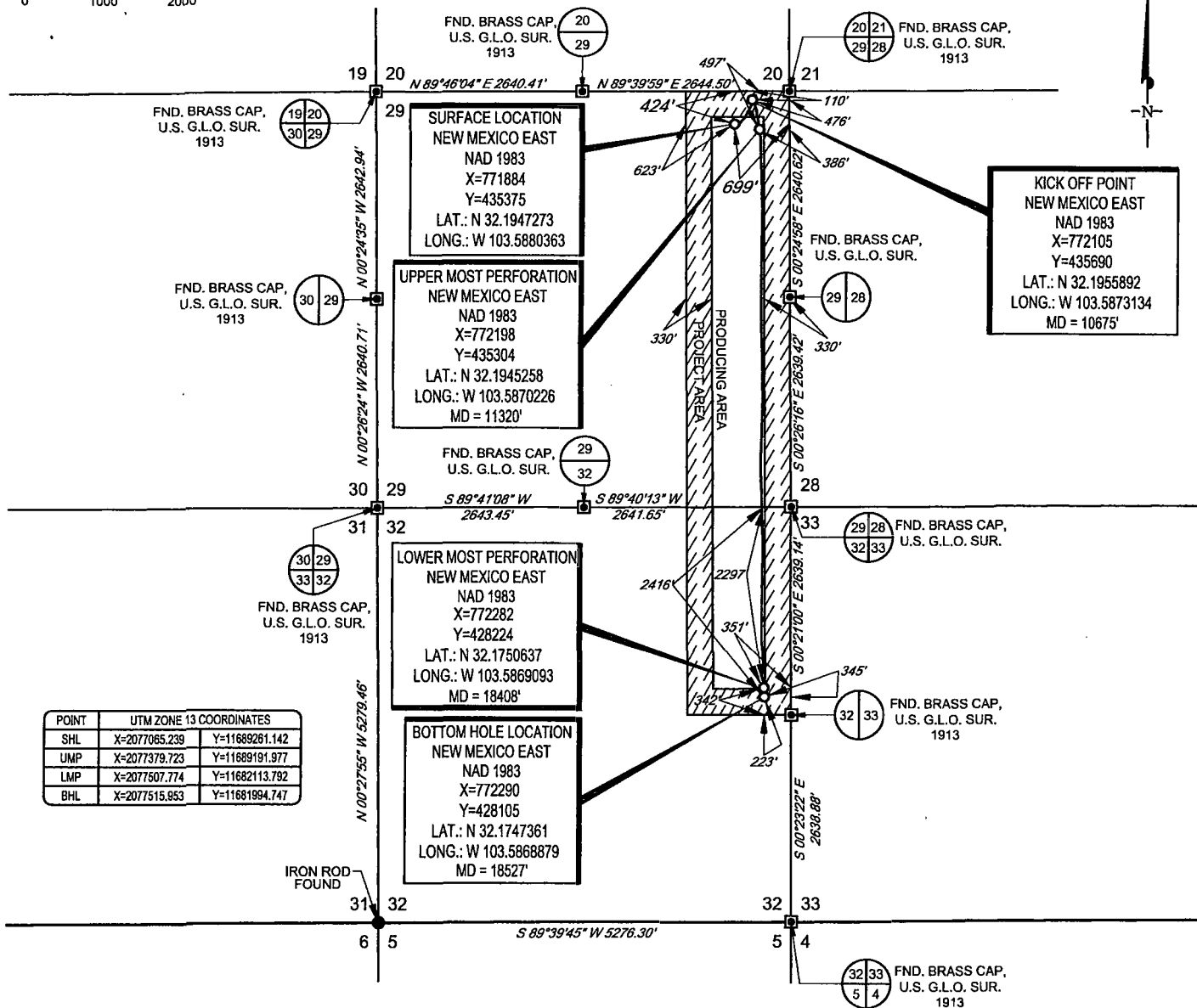
FORM C-102
Revised August 1, 2011
Submit one copy to appropriate
District Office

☐ **AMENDED REPORT**

SCALE: 1" = 2000'

0' 1000' 2000'

SECTIONS 29 & 32, TOWNSHIP 24-S, RANGE 33-E, N.M.P.M.
LEA COUNTY, NEW MEXICO



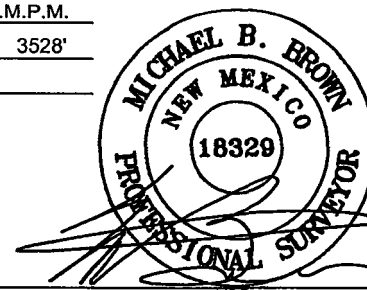
POINT	UTM ZONE 13 COORDINATES	
SHL	X=2077065.239	Y=11689281.142
UMP	X=2077379.723	Y=11689191.977
LMP	X=2077507.774	Y=11682113.792
BHL	X=2077515.953	Y=11681994.747

LEASE NAME & WELL NO.: BANDIT 29 STATE COM #501H
 SECTION 29 TWP 24-S RGE 33-E SURVEY N.M.P.M.
 COUNTY LEA STATE NM ELEVATION 3528'
 DESCRIPTION 424' FNL & 699' FEL



TOPOGRAPHIC
LOYALTY INNOVATION LEGACY

1400 EVERMAN PARKWAY, Ste. 146 • FT. WORTH, TEXAS 76140
 TELEPHONE: (817) 744-7512 • FAX (817) 744-7554
 2803 NORTH BIG SPRING • MIDLAND, TEXAS 79705
 TELEPHONE: (432) 682-1653 OR (800) 767-1653 • FAX (432) 682-1743
 WWW.TOPOGRAPHIC.COM



Michael Blake Brown, P.S. No. 18329
 JUNE 15, 2018

egog resources, Inc.

BANDIT 29 STATE COM #501H AS-COMPLETED	REVISION:	NOTES:
		1. ORIGINAL DOCUMENT SIZE: 8.5" X 11"
		2. ALL BEARINGS, DISTANCES, AND COORDINATE VALUES CONTAINED HEREIN ARE GRID BASED UPON THE NEW MEXICO COORDINATE SYSTEM OF 1983, EAST ZONE, U.S. SURVEY FEET.
		3. THIS WELL LOCATION SHOWN HEREON HAS BEEN SURVEYED ON THE GROUND UNDER MY SUPERVISION AND PREPARED ACCORDING TO THE EVIDENCE FOUND AT THE TIME OF SURVEY, AND DATA PROVIDED BY EOG RESOURCES, INC. THIS CERTIFICATION IS MADE AND LIMITED TO THOSE PERSONS OR ENTITIES SHOWN ON THE FACE OF THIS PLAT AND IS NON-TRANSFERABLE. THIS SURVEY IS CERTIFIED FOR THIS TRANSACTION ONLY.
DATE: 06/15/2018		
FILE:AD_BANDIT_29_STATE_COM_501H		
DRAWN BY: A.V.F.		
SHEET: 1 OF 1		