

District I
1625 N. French Dr., Hobbs, NM 88240
Phone: (575) 393-6161 Fax: (575) 393-0720
District II
811 S. First St., Artesia, NM 88210
Phone: (575) 748-1283 Fax: (575) 748-9720
District III
1000 Rio Brazos Road, Aztec, NM 87410
Phone: (505) 334-6178 Fax: (505) 334-6170
District IV
1220 S. St. Francis Dr., Santa Fe, NM 87505
Phone: (505) 476-3460 Fax: (505) 476-3462

State of New Mexico
Energy, Minerals & Natural Resources
Department
OIL CONSERVATION DIVISION
1220 South St. Francis Dr.
Santa Fe, NM 87505

FORM C-102
Revised August 1, 2011
Submit one copy to appropriate
District Office
 AMENDED REPORT

WELL LOCATION AND ACREAGE DEDICATION PLAT

¹ API Number 30-025-44957		² Pool Code 98092		³ Pool Name WC-025 G-09 S243336I; Upper Wolfcamp	
⁴ Property Code 319634		⁵ Property Name MAMBA 30 STATE COM			⁶ Well Number #704H
⁷ OGRID No. 7377		⁸ Operator Name EOG RESOURCES, INC.			⁹ Elevation 3538'

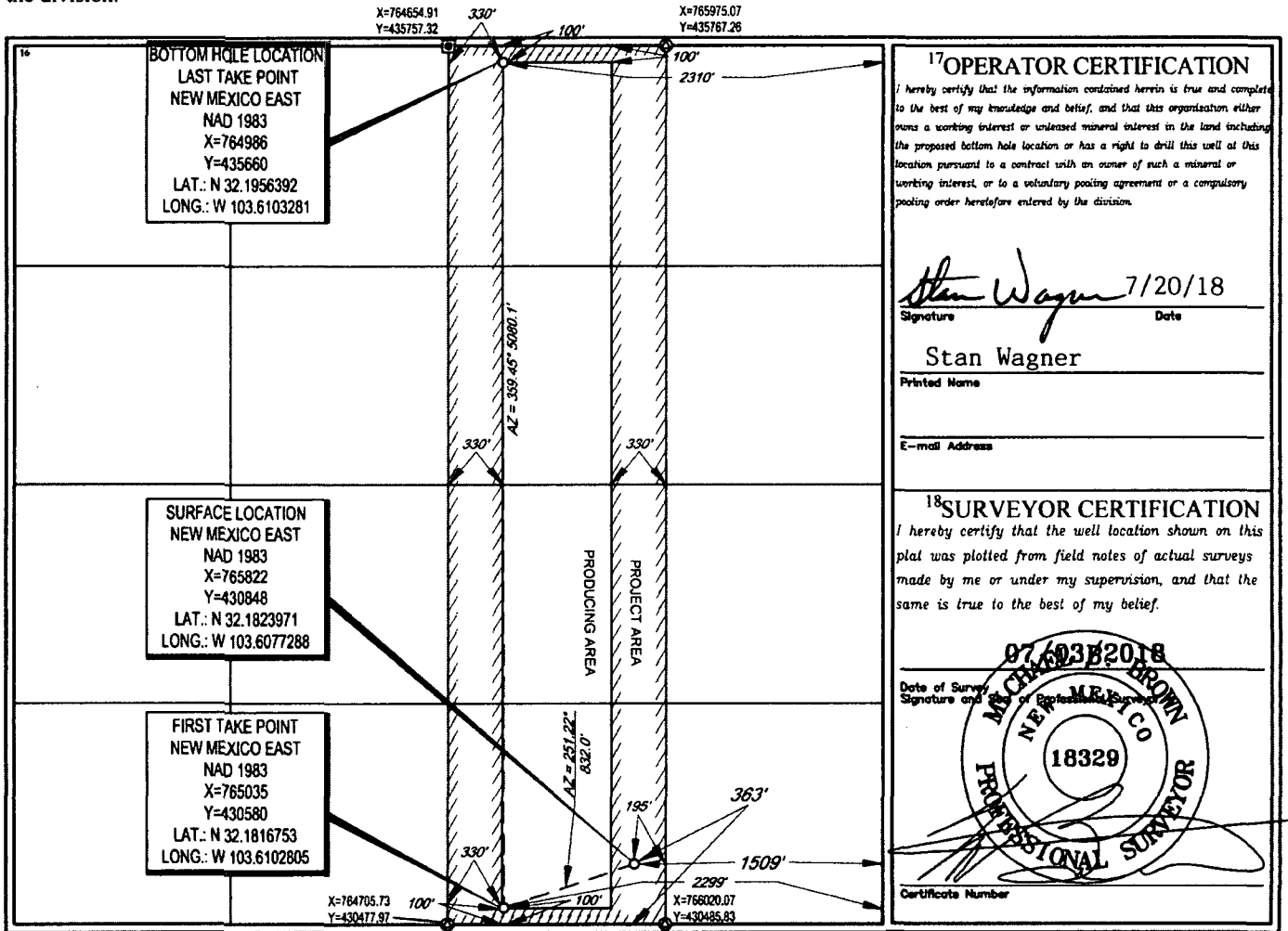
¹⁰Surface Location

UL or lot no.	Section	Township	Range	Lot Idn	Feet from the	North/South line	Feet from the	East/West line	County
0	30	24-S	33-E	-	363'	SOUTH	1509'	EAST	LEA

UL or lot no.	Section	Township	Range	Lot Idn	Feet from the	North/South line	Feet from the	East/West line	County
B	30	24-S	33-E	-	100'	NORTH	2310'	EAST	LEA

¹² Dedicated Acres 160.00	¹³ Joint or Infill	¹⁴ Consolidation Code	¹⁵ Order No.
---	-------------------------------	----------------------------------	-------------------------

No allowable will be assigned to this completion until all interests have been consolidated or a non-standard unit has been approved by the division.



Revised Permit Information 7/18/18:

Well Name: Mamba 30 State Com No. 704H

Location:

SL: 363' FSL & 1509' FEL, Section 30, T-24-S, R-33-E, Lea Co., N.M.

BHL: 100' FNL & 2310' FEL, Section 30, T-24-S, R-33-E, Lea Co., N.M.

Casing Program:

Hole Size	Interval	Csg OD	Weight	Grade	Conn	DF _{min} Collapse	DF _{min} Burst	DF _{min} Tension
17.5"	0 - 1,200'	13.375"	54.5#	J55	STC	1.125	1.25	1.60
12.25"	0-4,000'	9.625"	40#	J55	LTC	1.125	1.25	1.60
12.25"	4,000' - 4,800'	9.625"	40#	HCK55	LTC	1.125	1.25	1.60
8.75"	0 - 11,400'	7.625"	29.7#	HCP110	FXL	1.125	1.25	1.60
6.75"	0'-17,397'	5.5"	17#	HCP-110	LTC	1.125	1.25	1.60

Cement Program:

Depth	No. Sacks	Wt. lb/gal	Yld Ft ³ /ft	Slurry Description
1,200'	697	13.5	1.74	Lead: Class 'C' + 4.00% Bentonite + 2.00% CaCl ₂ (TOC @ Surface)
	333	14.8	1.35	Tail: Class 'C' + 0.6% FL-62 + 0.25 lb/sk Cello-Flake + 0.2% Sodium Metasilicate + 2.0% KCl (1.06 lb/sk)
4,800'	692	12.7	2.22	Lead: Class C + 0.15% C-20 + 11.63 pps Salt + 0.1% C-51 + 0.75% C-41P (TOC @ Surface)
	303	14.8	1.32	Tail: Class C + 0.13% C-20
11,400'	375	10.8	3.67	Lead: Class C + 0.40% D013 + 0.20% D046 + 0.10% D065 + 0.20% D167 (TOC @ 4,300')
	400	14.8	2.38	Tail: Class H + 94.0 pps D909 + 0.25% D065 + 0.30% D167 + 0.02% D208 + 0.15% D800
17,397'	950	14.8	1.31	Class H + 0.1% C-20 + 0.05% CSA-1000 + 0.20% C-49 + 0.40% C-17 (TOC @ 10,900')

Mud Program:

Depth	Type	Weight (ppg)	Viscosity	Water Loss
0 - 1,200'	Fresh - Gel	8.6-8.8	28-34	N/c
1,200' - 4,800'	Brine	10.0-10.2	28-34	N/c
4,800' - 11,400'	Oil Base	8.7-9.4	58-68	N/c - 6
11,400' - 17,397' Lateral	Oil Base	10.0-11.5	58-68	3 - 6