

District I
1625 N. French Dr., Hobbs, NM 88240
Phone: (575) 393-6161 Fax: (575) 393-0720
District II
811 S. First St., Artesia, NM 88210
Phone: (575) 748-1283 Fax: (575) 748-9720
District III
1000 Rio Brazos Road, Aztec, NM 87410
Phone: (505) 334-6178 Fax: (505) 334-6170
District IV
1220 S. St. Francis Dr., Santa Fe, NM 87505
Phone: (505) 476-3460 Fax: (505) 476-3462

State of New Mexico
Energy, Minerals & Natural Resources
Department
OIL CONSERVATION DIVISION
1220 South St. Francis Dr.
Santa Fe, NM 87505

FORM C-102

Revised August 1, 2011

Submit one copy to appropriate

District Office

☐ AMENDED REPORT

WELL LOCATION AND ACREAGE DEDICATION PLAT

¹ API Number 30-025-44104	² Pool Code 98234	³ Pool Name WC-025 G-09 S263619C; UPR WOLFCAMP
⁴ Property Code 319731	⁵ Property Name AZALEA 26 36 28 STATE	⁶ Well Number 111H
⁷ GRID No. 372224	⁸ Operator Name AMEREDEV OPERATING, LLC.	⁹ Elevation 2921'

¹⁰Surface Location

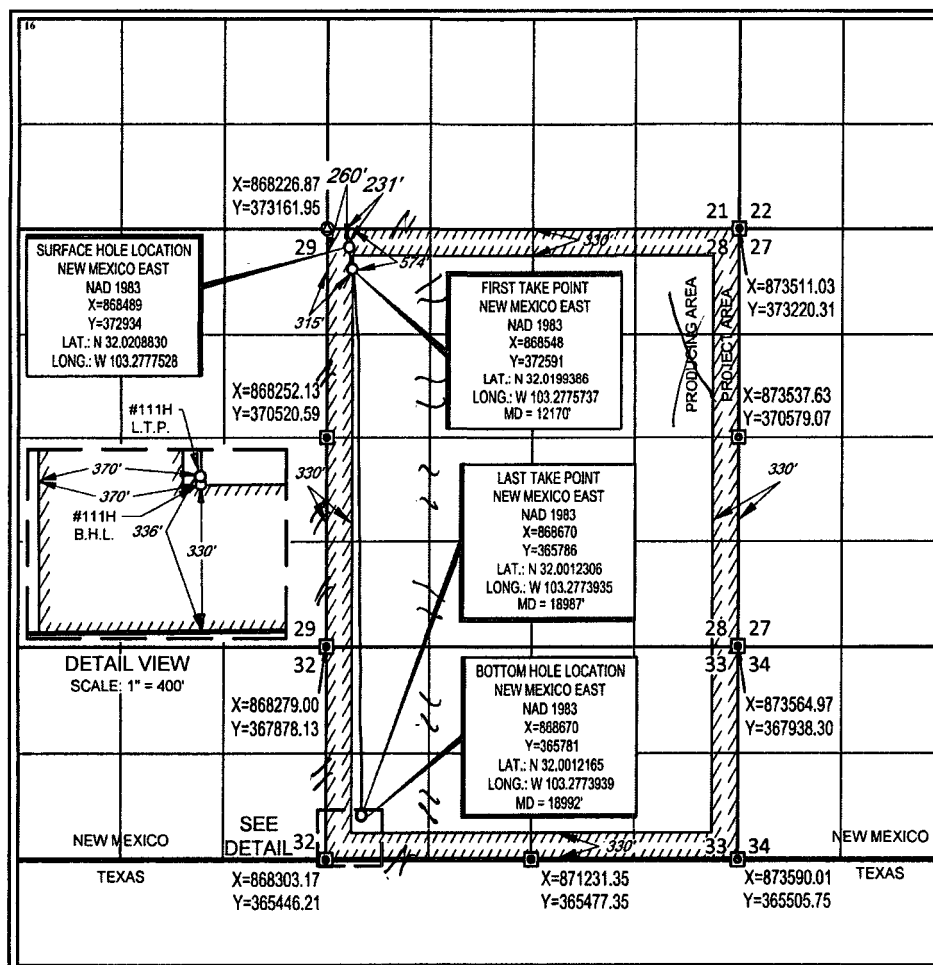
UL or lot no.	Section	Township	Range	Lot Idn	Feet from the	North/South line	Feet from the	East/West line	County
D	28	26-S	36-E	-	231'	NORTH	260'	WEST	LEA

¹¹Bottom Hole Location If Different From Surface

UL or lot no.	Section	Township	Range	Lot Idn	Feet from the	North/South line	Feet from the	East/West line	County
4	33	26-S	36-E	-	330'	SOUTH	370'	WEST	LEA

¹² Dedicated Acres 233.75	¹³ Joint or Infill	¹⁴ Consolidation Code	¹⁵ Order No.
---	-------------------------------	----------------------------------	-------------------------

No allowable will be assigned to this completion until all interests have been consolidated or a non-standard unit has been approved by the division.



¹⁷OPERATOR CERTIFICATION

I hereby certify that the information contained herein is true and complete to the best of my knowledge and belief, and that this organization either owns a working interest or undivided mineral interest in the land including the proposed bottom hole location or has a right to drill this well at this location pursuant to a contract with an owner of such a mineral or working interest, or to a voluntary pooling agreement or a compulsory pooling order heretofore entered by the division.

Floyd Hammond 7/18/18
Signature Date

Floyd Hammond
Printed Name

fhammond@amereDEV.com
E-mail Address

¹⁸SURVEYOR CERTIFICATION

I hereby certify that the well location shown on this plat was plotted from field notes of actual surveys made by me or under my supervision, and that the same is true to the best of my belief.

DATE: 7/18/2018
Signature and Seal of Professional Surveyor
19842
PROFESSIONAL SURVEYOR
Stan W. Lloyd
Certificate Number

SCALE: 1" = 1000'
0' 500' 1000'

SECTION 28, TOWNSHIP 26-S, RANGE 36-E, N.M.P.M.
LEA COUNTY, NEW MEXICO

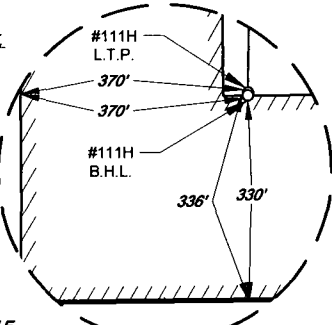


SURFACE HOLE LOCATION
NEW MEXICO EAST
NAD 1983
X=868489
Y=372934
LAT.: N 32.0208830
LONG.: W 103.2777528

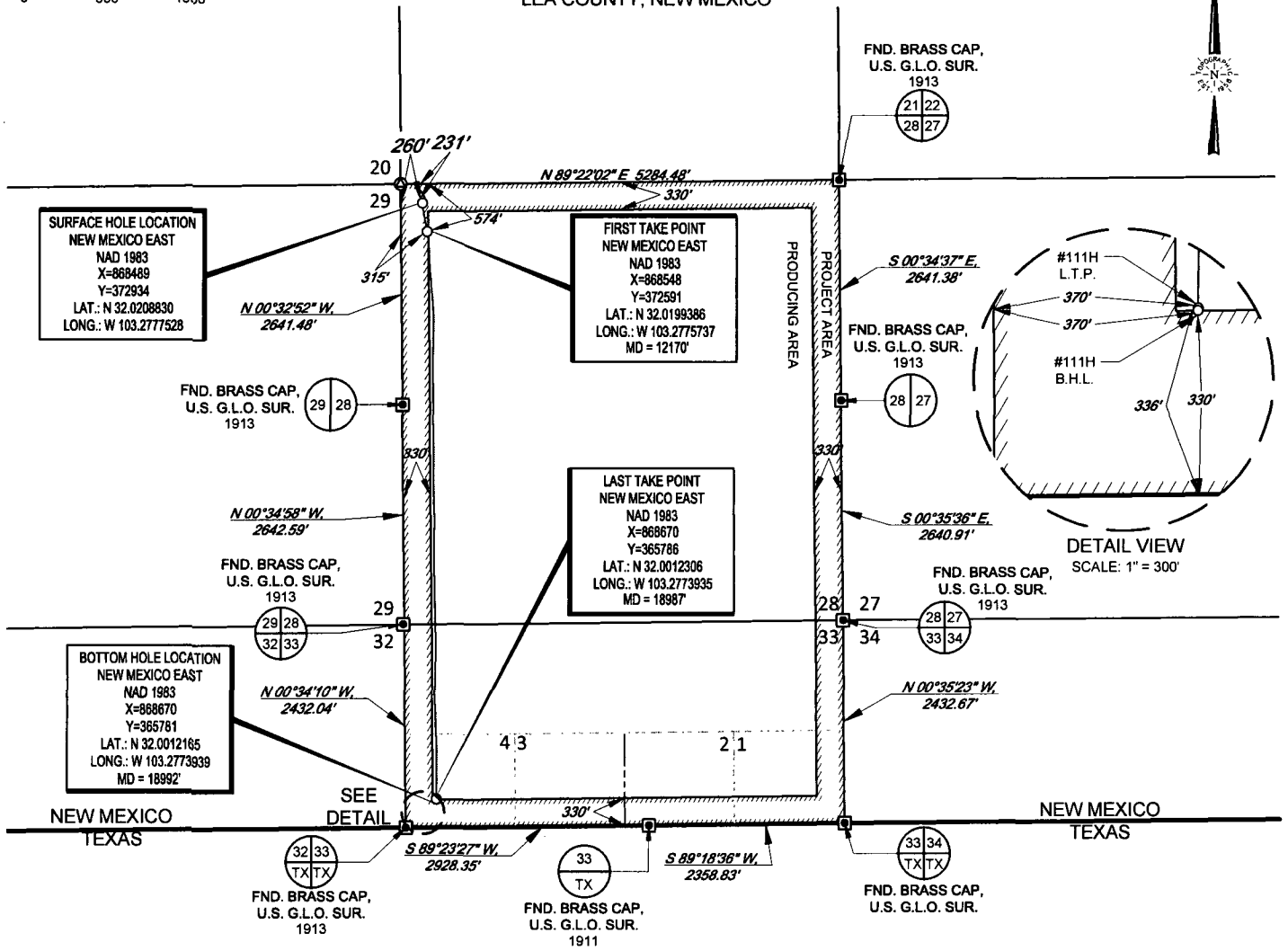
FIRST TAKE POINT
NEW MEXICO EAST
NAD 1983
X=868548
Y=372591
LAT.: N 32.0199386
LONG.: W 103.2775737
MD = 12170'

LAST TAKE POINT
NEW MEXICO EAST
NAD 1983
X=868670
Y=365786
LAT.: N 32.0012306
LONG.: W 103.2773935
MD = 18987'

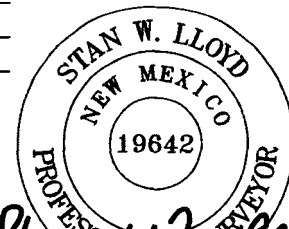
BOTTOM HOLE LOCATION
NEW MEXICO EAST
NAD 1983
X=868670
Y=365781
LAT.: N 32.0012185
LONG.: W 103.2773939
MD = 18992'



DETAIL VIEW
SCALE: 1" = 300'



LEASE NAME & WELL NO.: AZALEA STATE 26 36 28 111H
SECTION 28 TWP 26-S RGE 36-E SURVEY N.M.P.M.
COUNTY LEA STATE NM ELEVATION 2921'
DESCRIPTION 231' FNL & 260' FWL



Stan W. Lloyd
Stan W. Lloyd, P.S. No. 19642
JULY 17, 2018

AMEREDEV
AMEREDEV OPERATING, LLC

TOPOGRAPHIC
LOYALTY INNOVATION LEGACY
1400 EVERMAN PARKWAY, Ste. 146 • FT. WORTH, TEXAS 76140
TELEPHONE: (817) 744-7512 • FAX (817) 744-7548
TEXAS FIRM REGISTRATION NO. 10042504
WWW.TOPOGRAPHIC.COM

AZALEA STATE 26 36 28
111H
AS-COMPLETED

REVISION:

DATE: 07/17/18
FILE: AD_AZALEA_STATE_26 36 28_111H
DRAWN BY: A.M.D.
SHEET: 1 OF 1

NOTES:

1. ORIGINAL DOCUMENT SIZE: 8.5" X 11"
2. ALL BEARINGS, DISTANCES, AND COORDINATE VALUES CONTAINED HEREIN ARE GRID BASED UPON THE NEW MEXICO STATE PLANE COORDINATE SYSTEM, EAST ZONE, U.S. SURVEY FEET, NORTH AMERICAN DATUM 1983.
3. THIS WELL LOCATION SHOWN HEREON HAS BEEN SURVEYED ON THE GROUND UNDER MY SUPERVISION AND PREPARED ACCORDING TO THE EVIDENCE FOUND AT THE TIME OF SURVEY, AND DATA PROVIDED BY AMEREDEV OPERATING, LLC. THIS CERTIFICATION IS MADE AND LIMITED TO THOSE PERSONS OR ENTITIES SHOWN ON THE FACE OF THIS PLAT AND IS NON-TRANSFERABLE. THIS SURVEY IS CERTIFIED FOR THIS TRANSACTION ONLY.