

HOBBBS OCD

JUL 20 2018

Form 3160-3  
(March 2012)

RECEIVED

**Carlsbad Field Office**  
**OCD Hobbs**  
 UNITED STATES  
 DEPARTMENT OF THE INTERIOR  
 BUREAU OF LAND MANAGEMENT

 FORM APPROVED  
 OMB No. 1004-0137  
 Expires October 31, 2014

## APPLICATION FOR PERMIT TO DRILL OR REENTER

1a. Type of work: <input checked="" type="checkbox"/> DRILL <input type="checkbox"/> REENTER		5. Lease Serial No. NMNM097151
1b. Type of Well: <input checked="" type="checkbox"/> Oil Well <input type="checkbox"/> Gas Well <input type="checkbox"/> Other <input checked="" type="checkbox"/> Single Zone <input type="checkbox"/> Multiple Zone		6. If Indian, Allottee or Tribe Name
2. Name of Operator DEVON ENERGY PRODUCTION COMPANY LP (6137)		7. If Unit or CA Agreement, Name and No.
3a. Address 333 West Sheridan Avenue Oklahoma City OK		8. Lease Name and Well No. (322149) FLAGLER 8 FED 25H
3b. Phone No. (include area code) (405)552-6571		9. API Well No. 30-025-45013
4. Location of Well (Report location clearly and in accordance with any State requirements.)* At surface SESW / 380 FSL / 2600 FWL / LAT 32.1388991 / LONG -103.5944394 At proposed prod. zone NENW / 330 FNL / 2180 FWL / LAT 32.1514597 / LONG -103.5957946		10. Field and Pool, or Exploratory (97900) RED HILLS / UPPER BONE SPRING SH
14. Distance in miles and direction from nearest town or post office*		11. Sec., T. R. M. or Blk. and Survey or Area SEC 8 / T25S / R33E / NMP
15. Distance from proposed* location to nearest property or lease line, ft. (Also to nearest drig. unit line, if any) 380 feet	16. No. of acres in lease 520	12. County or Parish LEA
17. Spacing Unit dedicated to this well 160	18. Distance from proposed location* to nearest well, drilling, completed, 4323 feet applied for, on this lease, ft.	13. State NM
19. Proposed Depth 9800 feet / 14343 feet	20. BLM/BIA Bond No. on file FED: CO1104	
21. Elevations (Show whether DF, KDB, RT, GL, etc.) 3447 feet	22. Approximate date work will start* 03/10/2019	23. Estimated duration 45 days

## 24. Attachments

The following, completed in accordance with the requirements of Onshore Oil and Gas Order No. 1, must be attached to this form:

- |  |   |
|--|---|
| 1. Well plat certified by a registered surveyor.   | 4. Bond to cover the operations unless covered by an existing bond on file (see Item 20 above). |
| 2. A Drilling Plan.  | 5. Operator certification   |
| 3. A Surface Use Plan (if the location is on National Forest System Lands, the SUPO must be filed with the appropriate Forest Service Office). | 6. Such other site specific information and/or plans as may be required by the BLM.             |

25. Signature (Electronic Submission)	Name (Printed/Typed) Rebecca Deal / Ph: (405)228-8429	Date 03/16/2018
Title Regulatory Compliance Professional		
Approved by (Signature) (Electronic Submission)	Name (Printed/Typed) Cody Layton / Ph: (575)234-5959	Date 07/16/2018
Title Assistant Field Manager Lands & Minerals Office CARLSBAD		

Application approval does not warrant or certify that the applicant holds legal or equitable title to those rights in the subject lease which would entitle the applicant to conduct operations thereon.  
 Conditions of approval, if any, are attached.

Title 18 U.S.C. Section 1001 and Title 43 U.S.C. Section 1212, make it a crime for any person knowingly and willfully to make to any department or agency of the United States any false, fictitious or fraudulent statements or representations as to any matter within its jurisdiction.

(Continued on page 2)

\*(Instructions on page 2)

GCP Rec 07/20/18

**APPROVED WITH CONDITIONS**  
 Approval Date: 07/16/2018

 KZ  
 07/23/18

Double sided

## INSTRUCTIONS

**GENERAL:** This form is designed for submitting proposals to perform certain well operations, as indicated on Federal and Indian lands and leases for action by appropriate Federal agencies, pursuant to applicable Federal laws and regulations. Any necessary special instructions concerning the use of this form and the number of copies to be submitted, particularly with regard to local, area, or regional procedures and practices, either are shown below or will be issued by, or may be obtained from local Federal offices.

**ITEM 1:** If the proposal is to redrill to the same reservoir at a different subsurface location or to a new reservoir, use this form with appropriate notations. Consult applicable Federal regulations concerning subsequent work proposals or reports on the well.

**ITEM 4:** Locations on Federal or Indian land should be described in accordance with Federal requirements. Consult local Federal offices for specific instructions.

**ITEM 14:** Needed only when location of well cannot readily be found by road from the land or lease description. A plat, or plats, separate or on the reverse side, showing the roads to, and the surveyed location of, the well, and any other required information, should be furnished when required by Federal agency offices.

**ITEMS 15 AND 18:** If well is to be, or has been directionally drilled, give distances for subsurface location of hole in any present or objective productive zone.

**ITEM 22:** Consult applicable Federal regulations, or appropriate officials, concerning approval of the proposal before operations are started.

## NOTICES

The Privacy Act of 1974 and regulation in 43 CFR 2.48(d) provide that you be furnished the following information in connection with information required by this application.

**AUTHORITY:** 30 U.S.C. 181 et seq., 25 U.S.C. 396; 43 CFR 3160

**PRINCIPAL PURPOSES:** The information will be used to: (1) process and evaluate your application for a permit to drill a new oil, gas, or service well or to reenter a plugged and abandoned well; and (2) document, for administrative use, information for the management, disposal and use of National Resource Lands and resources including (a) analyzing your proposal to discover and extract the Federal or Indian resources encountered; (b) reviewing procedures and equipment and the projected impact on the land involved; and (c) evaluating the effects of the proposed operation on the surface and subsurface water and other environmental impacts.

**ROUTINE USE:** Information from the record and/or the record will be transferred to appropriate Federal, State, and local or foreign agencies, when relevant to civil, criminal or regulatory investigations or prosecution, in connection with congressional inquiries and for regulatory responsibilities.

**EFFECT OF NOT PROVIDING INFORMATION:** Filing of this application and disclosure of the information is mandatory only if you elect to initiate a drilling or reentry operation on an oil and gas lease.

The Paperwork Reduction Act of 1995 requires us to inform you that:

The BLM collects this information to allow evaluation of the technical, safety, and environmental factors involved with drilling for oil and/or gas on Federal and Indian oil and gas leases. This information will be used to analyze and approve applications.

Response to this request is mandatory only if the operator elects to initiate drilling or reentry operations on an oil and gas lease.

The BLM would like you to know that you do not have to respond to this or any other Federal agency-sponsored information collection unless it displays a currently valid OMB control number.

**BURDEN HOURS STATEMENT:** Public reporting burden for this form is estimated to average 8 hours per response, including the time for reviewing instructions, gathering and maintaining data, and completing and reviewing the form. Direct comments regarding the burden estimate or any other aspect of this form to U.S. Department of the Interior, Bureau of Land Management (1004-0137), Bureau Information Collection Clearance Officer (WO-630), 1849 C Street, N.W., Mail Stop 401 LS, Washington, D.C. 20240.

## **Additional Operator Remarks**

### **Location of Well**

I. SHL: SESW / 380 FSL / 2600 FWL / TWSP: 25S / RANGE: 33E / SECTION: 8 / LAT: 32.1388991 / LONG: -103.5944394 ( TVD: 0 feet, MD: 0 feet )  
PPP: SESW / 330 FSL / 2180 FWL / TWSP: 25S / RANGE: 33E / SECTION: 8 / LAT: 32.13877 / LONG: -103.595897 ( TVD: 9313 feet, MD: 9673 feet )  
BHL: NENW / 330 FNL / 2180 FWL / TWSP: 25S / RANGE: 33E / SECTION: 8 / LAT: 32.1514597 / LONG: -103.5957946 ( TVD: 9800 feet, MD: 14343 feet )

## **BLM Point of Contact**

Name: Priscilla Perez

Title: Legal Instruments Examiner

Phone: 5752345934

Email: pperez@blm.gov

## **Review and Appeal Rights**

A person contesting a decision shall request a State Director review. This request must be filed within 20 working days of receipt of the Notice with the appropriate State Director (see 43 CFR 3165.3). The State Director review decision may be appealed to the Interior Board of Land Appeals, 801 North Quincy Street, Suite 300, Arlington, VA 22203 (see 43 CFR 3165.4). Contact the above listed Bureau of Land Management office for further information.

## Devon Energy, Flagler 8 Fed 25H

### 1. Geologic Formations

TVD of target	9,800'	Pilot hole depth	N/A
MD at TD:	14,343'	Deepest expected fresh water:	

#### Basin

Formation	Depth (TVD) from KB	Water/Mineral Bearing/ Target Zone?	Hazards*
RUSTLER	1145		
TOP SALT	1508		
BASE OF SALT	5000		
BELL CANYON	5000		
CHERRY CANYON	6040		
BRUSHY CANYON	7690		
BONE SPRING	9110		
BONE SPRING 1ST	10016		
BONE SPRING 2ND	10610		

\*H2S, water flows, loss of circulation, abnormal pressures, etc.

- NGL Removal – On lease
  - Plants are expensive, residue gas is still flared, and uneconomical to operate when gas volume declines

## Devon Energy, Flagler 8 Fed 25H

### 2. Casing Program

Hole Size	Casing Interval		Csg. Size	Weight (lbs)	Grade	Conn.	SF Collapse	SF Burst	SF Tension
	From	To							
17.5"	0	1,150'	13.375"	48	H40	STC	1.125	1	1.6
12.25"	0	5,000'	9.625"	40	J55	LTC	1.125	1	1.6
8.75"	0	14,343'	5.5"	17	P110	BTC	1.125	1	1.6
BLM Minimum Safety Factor							1.125	1	1.6 Dry 1.8 Wet

All casing strings will be tested in accordance with Onshore Oil and Gas Order #2 III.B.1.h

Must have table for contingency casing

	Y or N
Is casing new? If used, attach certification as required in Onshore Order #1	Y
Does casing meet API specifications? If no, attach casing specification sheet.	Y
Is premium or uncommon casing planned? If yes attach casing specification sheet.	N
Does the above casing design meet or exceed BLM's minimum standards? If not provide justification (loading assumptions, casing design criteria).	Y
Will the intermediate pipe be kept at a minimum 1/3 fluid filled to avoid approaching the collapse pressure rating of the casing?	Y
Is well located within Capitan Reef?	N
If yes, does production casing cement tie back a minimum of 50' above the Reef?	
Is well within the designated 4 string boundary.	
Is well located in SOPA but not in R-111-P?	N
If yes, are the first 2 strings cemented to surface and 3 <sup>rd</sup> string cement tied back 500' into previous casing?	
Is well located in R-111-P and SOPA?	N
If yes, are the first three strings cemented to surface?	
Is 2 <sup>nd</sup> string set 100' to 600' below the base of salt?	
Is well located in high Cave/Karst?	N
If yes, are there two strings cemented to surface?	
(For 2 string wells) If yes, is there a contingency casing if lost circulation occurs?	
Is well located in critical Cave/Karst?	N
If yes, are there three strings cemented to surface?	

## Devon Energy, Flagler 8 Fed 25H

### 3. Cementing Program

Casing	# Sks	Wt. lb/gal	Yld ft <sup>3</sup> /sack	H <sub>2</sub> O gal/sk	500# Comp. Strength (hours)	Slurry Description
Surf.	901	14.8	1.33	6.32	6	Lead: Class C Cement + 0.125 lbs/sack Poly-F-Flake
Inter.	511	10.3	3.65	22.06	24	Lead: (50:50) Poz (Silica) 3 lbm/sk Kol-Seal, .125 lbm/sk Poly-E-Flake
	306	14.8	1.33	6.32	6	Tail: Class C Cement + 0.125 lbs/sack Poly-F-Flake
Prod.	457	9	3.27	13.5	21	Lead: Tuned Light Cement
	1207	14.5	1.2	5.31	25	Tail: (50:50) Clas H Cement: Poz (Fly Ash) + 0.5% bwoc HALAD-344 + 0.4% bwoc CFR-3 + 0.2% BWOC HR-601 + 2% bwoc Bentonite

Casing String	TOC	% Excess
13-3/8" Surface	0'	50%
9-5/8" Intermediate	0'	30%
5-1/2" Production	4800'	25%

### 4. Pressure Control Equipment

N	A variance is requested for the use of a diverter on the surface casing. See attached for schematic.
---	--

BOP installed and tested before drilling which hole?	Size?	Min. Required WP	Type	✓	Tested to:
12-1/4"	13-5/8"	3M	Annular	x	50% of working pressure
			Blind Ram		3M
			Pipe Ram		
			Double Ram	x	
			Other*		
8-3/4"	13-5/8"	3M	Annular	x	50% of working pressure
			Blind Ram		3M
			Pipe Ram		
			Double Ram	x	
			Other*		
			Annular		
			Blind Ram		



**Devon Energy, Flagler 8 Fed 25H**

			Pipe Ram		
			Double Ram		
			Other *		

\*Specify if additional ram is utilized.

BOP/BOPE will be tested by an independent service company to 250 psi low and the high pressure indicated above per Onshore Order 2 requirements. The System may be upgraded to a higher pressure but still tested to the working pressure listed in the table above. If the system is upgraded all the components installed will be functional and tested.

Pipe rams will be operationally checked each 24 hour period. Blind rams will be operationally checked on each trip out of the hole. These checks will be noted on the daily tour sheets. Other accessories to the BOP equipment will include a Kelly cock and floor safety valve (inside BOP) and choke lines and choke manifold. See attached schematics.

Y	Formation integrity test will be performed per Onshore Order #2. On Exploratory wells or on that portion of any well approved for a 5M BOPE system or greater, a pressure integrity test of each casing shoe shall be performed. Will be tested in accordance with Onshore Oil and Gas Order #2 III.B.1.i.
Y	A variance is requested for the use of a flexible choke line from the BOP to Choke Manifold. See attached for specs and hydrostatic test chart.
Y	Are anchors required by manufacturer?
Y	<p>A multibowl wellhead is being used. The BOP will be tested per Onshore Order #2 after installation on the surface casing which will cover testing requirements for a maximum of 30 days. If any seal subject to test pressure is broken the system must be tested.</p> <p>Devon proposes using a multi-bowl wellhead assembly. This assembly will only be tested when installed on the surface casing. Minimum working pressure of the blowout preventer (BOP) and related equipment (BOPE) required for drilling below the surface casing shoe shall be 3000 (3M) psi.</p> <ul style="list-style-type: none"> <li>○ Wellhead will be installed by wellhead representatives.</li> <li>○ If the welding is performed by a third party, the wellhead representative will monitor the temperature to verify that it does not exceed the maximum temperature of the seal.</li> <li>○ Wellhead representative will install the test plug for the initial BOP test.</li> <li>○ Wellhead company will install a solid steel body pack-off to completely isolate the lower head after cementing intermediate casing. After installation of the packoff, the pack-off and the lower flange will be tested to 3M, as shown on the attached schematic. Everything above the pack-off will not have been altered whatsoever from the initial nipple up. Therefore the BOP components will not be retested at that time.</li> </ul>

## Devon Energy, Flagler 8 Fed 25H

- If the cement does not circulate and one inch operations would have been possible with a standard wellhead, the well head will be cut and top out operations will be conducted.
- Devon will pressure test all seals above and below the mandrel (but still above the casing) to full working pressure rating.
- Devon will test the casing to 0.22 psi/ft or 1500 psi, whichever is greater, as per Onshore Order #2.

After running the 13-3/8" surface casing, a 13-5/8" BOP/BOPE system with a minimum rating of 3M will be installed on the wellhead system and will undergo a 250 psi low pressure test followed by a 3,000 psi high pressure test. The 3,000 psi high and 250 psi. Low test will cover testing requirements a maximum of 30 days, as per Onshore Order #2. If the well is not complete within 30 days of this BOP test, another full BOP test will be conducted, as per Onshore Order #2.

After running the 9-5/8" intermediate casing with a mandrel hanger, the 13-5/8" BOP/BOPE system with a minimum rating of 3M will already be installed on the wellhead.

The pipe rams will be operated and checked each 24 hour period and each time the drill pipe is out of the hole. These tests will be logged in the daily driller's log. A 2" kill line and 3" choke line will be incorporated into the drilling spool below the ram BOP. In addition to the rams and annular preventer, additional BOP accessories include a Kelly cock, floor safety valve, choke lines, and choke manifold rated at 3,000 psi WP.

Devon's proposed wellhead manufactures will be EMC Technologies, Cactus Wellhead, or Cameron.

The pipe rams will be operated and checked each 24 hour period and each time the drill pipe is out of the hole. These tests will be logged in the daily driller's log. A 2" kill line and 3" choke line will be incorporated into the drilling spool below the ram BOP. In addition to the rams and annular preventer, additional BOP accessories include a kelly cock, floor safety valve, choke lines, and choke manifold rated at 3,000 psi WP.

### 5. Mud Program

Depth		Type	Weight (ppg)	Viscosity	Water Loss
From	To				
0	1150	FW Gel	8.5-9.0	28-34	N/C
1150	5,000	Saturated Brine	10.0-11.0	28-34	N/C
5,000	14,343	Cut Brine	8.5-9.3	28-34	N/C

Sufficient mud materials to maintain mud properties and meet minimum lost circulation and weight increase requirements will be kept on location at all times.

What will be used to monitor the loss or gain of fluid?	PVT/Pason/Visual Monitoring
---	-----------------------------

## Devon Energy, Flagler 8 Fed 25H

### 6. Logging and Testing Procedures

<b>Logging, Coring and Testing.</b>	
X	Will run GR/CNL from TD to surface (horizontal well – vertical portion of hole). Stated logs run will be in the Completion Report and submitted to the BLM.
	No Logs are planned based on well control or offset log information.
	Drill stem test? If yes, explain
	Coring? If yes, explain

<b>Additional logs planned</b>	<b>Interval</b>
	Resistivity
	Density
X	CBL
X	Mud log
	PEX

### 7. Drilling Conditions

<b>Condition</b>	<b>Specify what type and where?</b>
BH Pressure at deepest TVD	4720 psi
Abnormal Temperature	No

Mitigation measure for abnormal conditions. Describe. Lost circulation material/sweeps/mud scavengers.

Hydrogen Sulfide (H <sub>2</sub> S) monitors will be installed prior to drilling out the surface shoe. If H <sub>2</sub> S is detected in concentrations greater than 100 ppm, the operator will comply with the provisions of Onshore Oil and Gas Order #6. If Hydrogen Sulfide is encountered, measured values and formations will be provided to the BLM.	
N	H <sub>2</sub> S is present
Y	H <sub>2</sub> S Plan attached

### 8. Other facets of operation

Is this a walking operation? No.

Will be pre-setting casing? No.

Attachments

☒ Directional Plan

☐ Other, describe



Fluid Technology

ContiTech Beattie Corp.  
Website: [www.contitechbeattie.com](http://www.contitechbeattie.com)

Monday, June 14, 2010

RE: Drilling & Production Hoses  
Lifting & Safety Equipment

To Helmerich & Payne,

A Continental Contitech hose assembly can perform as intended and suitable for the application regardless of whether the hose is secured or unsecured in its configuration. As a manufacturer of High Pressure Hose Assemblies for use in Drilling & Production, we do offer the corresponding lifting and safety equipment, this has the added benefit of easing the lifting and handling of each hose assembly whilst affording hose longevity by ensuring correct handling methods and procedures as well as securing the hose in the unlikely event of a failure; but in no way does the lifting and safety equipment affect the performance of the hoses providing the hoses have been handled and installed correctly. It is good practice to use lifting & safety equipment but not mandatory.

Should you have any questions or require any additional information/clarifications then please do not hesitate to contact us.

Contitech Beattie is part of the Continental AG Corporation and can offer the full support resources associated with a global organization.

Best regards,

Robin Hodgson  
Sales Manager  
Contitech Beattie Corp

Contitech Beattie Corp,  
11535 Brittmoore Park Drive,  
Houston, TX 77041  
Phone: +1 (832) 327-0141  
Fax: +1 (832) 327-0148  
[www.contitechbeattie.com](http://www.contitechbeattie.com)





# QUALITY DOCUMENT

**PHOENIX RUBBER  
INDUSTRIAL LTD.**

\*6728 Szeged, Budapesti út 10, Hungary • H-6701 Szeged, P. O. Box 152  
phone: (3662) 566-737 • Fax: (3662) 568-738

**SALES & MARKETING:** H-1092 Budapest, Ráday u. 42-44. Hungary • H-1440 Budapest, P. O. Box 26  
Phone: (361) 456-4200 • Fax: (361) 217-2972, 456-4273 • [www.taurusemerge.hu](http://www.taurusemerge.hu)

<b>QUALITY CONTROL</b> <b>INSPECTION AND TEST CERTIFICATE</b>				CERT. N°: 552	
PURCHASER: Phoenix Beattie Co.				P.O. N°: 1519FA-871	
PHOENIX RUBBER order N°: 170466		HOSE TYPE: 3" ID Choke and Kill Hose			
HOSE SERIAL N°: 34128		NOMINAL / ACTUAL LENGTH: 11,43 m			
W.P. 68,96 MPa 10000 psi		T.P. 103,4 MPa 15000 psi		Duration: 60 min.	
Pressure test with water at ambient temperature					
See attachment. (1 page)					
↑ 10 mm = 10 Min. → 10 mm = 25 MPa					
COUPLINGS					
Type		Serial N°		Quality	
3" coupling with 4 1/16" Flange end		720 719		AISI 4130 AISI 4130	
				Heat N° C7626 47357	
API Spec 16 C Temperature rate: "B"					
All metal parts are flawless					
WE CERTIFY THAT THE ABOVE HOSE HAS BEEN MANUFACTURED IN ACCORDANCE WITH THE TERMS OF THE ORDER AND PRESSURE TESTED AS ABOVE WITH SATISFACTORY RESULT.					
Date:  29. April. 2002.		Inspector		Quality Control PHOENIX RUBBER Industrial Ltd. Hose Inspection and Pressure Test Dept.	

40920-0-00015 N800C 14094-65

8	CN	+0.000	0.00	14.00
	RD	+0.000	0.00	14.00
	BL	+0.000	0.00	14.00
7	CN	+0.000	0.00	40.00
	RD	+0.000	0.00	40.00
	BL	+0.000	0.00	40.00
6	CN	+0.000	0.00	60.00
	RD	+0.000	0.00	60.00
	BL	+0.000	0.00	60.00
5	CN	+0.000	0.00	80.00
	RD	+0.000	0.00	80.00
	BL	+0.000	0.00	80.00
4	CN	+0.000	0.00	
	RD	+0.000	0.00	
	BL	+0.000	0.00	
3	CN	+0.000	0.00	
	RD	+0.000	0.00	
	BL	+0.000	0.00	
2	CN	+0.000	0.00	
	RD	+0.000	0.00	
	BL	+0.000	0.00	

*[Signature]*  
**PHOENIX RUBBER**  
 Industrial Ltd.  
 Hose Inspection and  
 Certification Dept.

VERIFIED TRUE CO.  
 PHOENIX RUBBER & C.



U.S. Department of the Interior  
BUREAU OF LAND MANAGEMENT

## SUPO Data Report

07/16/2018

APD ID: 10400028293

Submission Date: 03/16/2018

Operator Name: DEVON ENERGY PRODUCTION COMPANY LP

Well Name: FLAGLER 8 FED

Well Number: 25H

Well Type: OIL WELL

Well Work Type: Drill

Highlighted data  
reflects the most  
recent changes

[Show Final Text](#)

### Section 1 - Existing Roads

Will existing roads be used? YES

Existing Road Map:

Flagler\_8\_Fed\_25H\_Access\_Rd\_20180312122713.pdf

Existing Road Purpose: ACCESS, FLUID TRANSPORT

Row(s) Exist? NO

#### ROW ID(s)

ID:

Do the existing roads need to be improved? YES

Existing Road Improvement Description: Improve road to accommodate Drilling and Completion operations.

Existing Road Improvement Attachment:

### Section 2 - New or Reconstructed Access Roads

Will new roads be needed? YES

New Road Map:

Flagler\_8\_Fed\_25H\_New\_Access\_Rd\_20180312122728.pdf

New road type: LOCAL

Length: 913

Feet

Width (ft.): 30

Max slope (%): 6

Max grade (%): 4

Army Corp of Engineers (ACOE) permit required? NO

ACOE Permit Number(s):

New road travel width: 14

New road access erosion control: Water Drainage Ditch

New road access plan or profile prepared? YES

New road access plan attachment:

Flagler\_8\_Fed\_25H\_New\_Access\_Rd\_20180312122747.pdf

Access road engineering design? YES

**Operator Name:** DEVON ENERGY PRODUCTION COMPANY LP

**Well Name:** FLAGLER 8 FED

**Well Number:** 25H

**Access road engineering design attachment:**

Flagler\_8\_Fed\_25H\_New\_Access\_Rd\_20180312122756.pdf

**Access surfacing type:** OTHER

**Access topsoil source:** ONSITE

**Access surfacing type description:** caliche

**Access onsite topsoil source depth:** 6

**Offsite topsoil source description:**

**Onsite topsoil removal process:** See attached Interim reclamation diagram.

**Access other construction information:**

**Access miscellaneous information:**

**Number of access turnouts:**

**Access turnout map:**

### **Drainage Control**

**New road drainage crossing:** OTHER

**Drainage Control comments:** Water Drainage Ditch

**Road Drainage Control Structures (DCS) description:** N/A

**Road Drainage Control Structures (DCS) attachment:**

### **Access Additional Attachments**

**Additional Attachment(s):**

### **Section 3 - Location of Existing Wells**

**Existing Wells Map?** YES

**Attach Well map:**

Flagler\_8\_Fed\_25H\_OneMiMap\_20180312122910.pdf

**Existing Wells description:**

### **Section 4 - Location of Existing and/or Proposed Production Facilities**

**Submit or defer a Proposed Production Facilities plan?** SUBMIT

**Production Facilities description:** 15 ATTACHMENTS - FLAGLER WELLPAD 1 & CTB 3 - 3 BATT CONN PLATS, CTB PAD AND ELECTRIC PLAT, 4 LATERAL PLATS, WELLPAD PLAT, 3 WELLPAD CTB TO FLOWLINE PLATS, WELLPAD ELECTRIC PLAT AND MULTI USE EASEMENT PLAT.

**Production Facilities map:**

Flagler\_8\_Fed\_25H\_CTB\_3\_20180315113314.pdf

Flagler\_8\_Fed\_25H\_CTB\_3\_BATCON\_Crude\_20180315113316.PDF

Flagler\_8\_Fed\_25H\_CTB\_3\_BATCON\_GAS\_20180315113318.PDF



**Operator Name:** DEVON ENERGY PRODUCTION COMPANY LP

**Well Name:** FLAGLER 8 FED

**Well Number:** 25H

Flagler\_8\_Fed\_25H\_CTB\_3\_BATCON\_Water\_20180315113319.PDF

Flagler\_8\_Fed\_25H\_LAT\_CRUDE\_20180315113321.PDF

Flagler\_8\_Fed\_25H\_CTB\_3\_ELE\_20180315113320.PDF

Flagler\_8\_Fed\_25H\_LAT\_ELE\_20180315113322.PDF

Flagler\_8\_Fed\_25H\_LAT\_ELE\_SNM\_20180315113323.PDF

Flagler\_8\_Fed\_25H\_WP\_3\_to\_CTB\_3\_FL\_20180315113336.PDF

Flagler\_8\_Fed\_25H\_LATERAL\_20180315113325.PDF

Flagler\_8\_Fed\_25H\_WP\_3\_20180315113430.pdf

Flagler\_8\_Fed\_25H\_WP\_3\_ELE\_20180315113432.PDF

Flagler\_8\_Fed\_25H\_WP\_4\_TO\_CTB\_3\_FL\_20180315113435.PDF

Flagler\_8\_Fed\_25H\_WP\_5\_TO\_CTB\_3\_FL\_20180315113436.PDF

Flagler\_8\_Fed\_25H\_MULTI\_USE\_Ease\_20180315113508.pdf

## **Section 5 - Location and Types of Water Supply**

### **Water Source Table**

**Water source use type:** STIMULATION

**Water source type:** RECYCLED

**Describe type:**

**Source latitude:**

**Source longitude:**

**Source datum:**

**Water source permit type:** OTHER

**Source land ownership:** FEDERAL

**Water source transport method:** PIPELINE

**Source transportation land ownership:** FEDERAL

**Water source volume (barrels):** 150000

**Source volume (acre-feet):** 19.333965

**Source volume (gal):** 6300000

**Water source and transportation map:**

Flagler\_8\_Fed\_25H\_Water\_Map\_20180315113648.pdf

**Water source comments:** The attached Water Transfer Map is a proposal only and the final route and documentation will be provided by a Devon contractor prior to installation. When available Devon will always follow existing disturbance.

**New water well?** NO

### **New Water Well Info**

**Well latitude:**

**Well Longitude:**

**Well datum:**

**Well target aquifer:**

**Est. depth to top of aquifer(ft):**

**Est thickness of aquifer:**

**Aquifer comments:**

**Aquifer documentation:**

**Operator Name:** DEVON ENERGY PRODUCTION COMPANY LP

**Well Name:** FLAGLER 8 FED

**Well Number:** 25H

**Well depth (ft):**

**Well casing type:**

**Well casing outside diameter (in.):**

**Well casing inside diameter (in.):**

**New water well casing?**

**Used casing source:**

**Drilling method:**

**Drill material:**

**Grout material:**

**Grout depth:**

**Casing length (ft.):**

**Casing top depth (ft.):**

**Well Production type:**

**Completion Method:**

**Water well additional information:**

**State appropriation permit:**

**Additional information attachment:**

## **Section 6 - Construction Materials**

**Construction Materials description:** Dirt fill and caliche will be used to construct well pad. See attached map.

**Construction Materials source location attachment:**

Flagler\_8\_Fed\_25H\_Caliche\_Map\_20180315113813.pdf

## **Section 7 - Methods for Handling Waste**

**Waste type:** DRILLING

**Waste content description:** Water Based Cuttings

**Amount of waste:** 1824 barrels

**Waste disposal frequency :** Daily

**Safe containment description:** N/A

**Safe containmant attachment:**

**Waste disposal type:** HAUL TO COMMERCIAL FACILITY **Disposal location ownership:** COMMERCIAL

**Disposal type description:**

**Disposal location description:** All cuttings will disposed of at R360, Sundance, or equivalent.

**Waste type:** COMPLETIONS/STIMULATION

**Waste content description:** Flow back water during completion operations.

**Amount of waste:** 3000 barrels

**Waste disposal frequency :** One Time Only

**Safe containment description:** N/A

**Safe containmant attachment:**

**Waste disposal type:** HAUL TO COMMERCIAL FACILITY **Disposal location ownership:** COMMERCIAL

**Operator Name:** DEVON ENERGY PRODUCTION COMPANY LP

**Well Name:** FLAGLER 8 FED

**Well Number:** 25H

**Disposal type description:**

**Disposal location description:** Various disposal locations in Lea and Eddy counties.

**Waste type:** PRODUCED WATER

**Waste content description:** Produced formation water

**Amount of waste:** 2000 barrels

**Waste disposal frequency :** Daily

**Safe containment description:** N/A

**Safe containmant attachment:**

**Waste disposal type:** OFF-LEASE INJECTION      **Disposal location ownership:** COMMERCIAL

**Disposal type description:**

**Disposal location description:** Various disposal locations in Lea and Eddy counties.

**Waste type:** FLOWBACK

**Waste content description:** Produced formation water

**Amount of waste:** 3000 barrels

**Waste disposal frequency :** Daily

**Safe containment description:** N/A

**Safe containmant attachment:**

**Waste disposal type:** OFF-LEASE INJECTION      **Disposal location ownership:** COMMERCIAL

**Disposal type description:**

**Disposal location description:** Various disposal locations in Lea and Eddy counties.

### **Reserve Pit**

**Reserve Pit being used?** NO

**Temporary disposal of produced water into reserve pit?**

**Reserve pit length (ft.)**      **Reserve pit width (ft.)**

**Reserve pit depth (ft.)**      **Reserve pit volume (cu. yd.)**

**Is at least 50% of the reserve pit in cut?**

**Reserve pit liner**

**Reserve pit liner specifications and installation description**

### **Cuttings Area**

**Operator Name:** DEVON ENERGY PRODUCTION COMPANY LP

**Well Name:** FLAGLER 8 FED

**Well Number:** 25H

**Cuttings Area being used?** NO

**Are you storing cuttings on location?** NO

**Description of cuttings location**

**Cuttings area length (ft.)**

**Cuttings area width (ft.)**

**Cuttings area depth (ft.)**

**Cuttings area volume (cu. yd.)**

**Is at least 50% of the cuttings area in cut?**

**WCuttings area liner**

**Cuttings area liner specifications and installation description**

## **Section 8 - Ancillary Facilities**

**Are you requesting any Ancillary Facilities?:** NO

**Ancillary Facilities attachment:**

**Comments:**

## **Section 9 - Well Site Layout**

**Well Site Layout Diagram:**

Flagler\_8\_Fed\_25H\_Well\_Layout\_20180315113923.pdf

**Comments:**

## **Section 10 - Plans for Surface Reclamation**

**Type of disturbance:** New Surface Disturbance

**Multiple Well Pad Name:** FLAGLER 8

**Multiple Well Pad Number:** 3

**Recontouring attachment:**

Flagler\_8\_Fed\_25H\_Interim\_Recl\_20180315113934.pdf

**Drainage/Erosion control construction:** All areas disturbed shall be reclaimed as early and as nearly as practicable to their original condition or their final land use and shall be maintained to control dust and minimize erosion to the extent practicable.

**Drainage/Erosion control reclamation:** Topsoils and subsoils shall be replaced to their original relative positions and contoured so as to achieve erosion control, long-term stability and preservation of surface water flow patterns. The disturbed area then shall be reseeded in the first favorable growing season.

**Operator Name:** DEVON ENERGY PRODUCTION COMPANY LP

**Well Name:** FLAGLER 8 FED

**Well Number:** 25H

<b>Well pad proposed disturbance (acres):</b> 8.264	<b>Well pad interim reclamation (acres):</b> 4.023	<b>Well pad long term disturbance (acres):</b> 4.241
<b>Road proposed disturbance (acres):</b> 0.629	<b>Road interim reclamation (acres):</b> 0	<b>Road long term disturbance (acres):</b> 0.629
<b>Powerline proposed disturbance (acres):</b> 0.466	<b>Powerline interim reclamation (acres):</b> 0	<b>Powerline long term disturbance (acres):</b> 0.466
<b>Pipeline proposed disturbance (acres):</b> 0.781	<b>Pipeline interim reclamation (acres):</b> 0	<b>Pipeline long term disturbance (acres):</b> 0.781
<b>Other proposed disturbance (acres):</b> 0	<b>Other interim reclamation (acres):</b> 0	<b>Other long term disturbance (acres):</b> 0
<b>Total proposed disturbance:</b> 10.14	<b>Total interim reclamation:</b> 4.023	<b>Total long term disturbance:</b> 6.117

**Disturbance Comments:**

**Reconstruction method:** Operator will use Best Management Practices "BMP" to mechanically recontour to obtain the desired outcome.

**Topsoil redistribution:** Topsoils shall be replaced to their original relative positions and contoured so as to achieve erosion control, long-term stability and preservation of surface water flow patterns.

**Soil treatment:** Topsoils shall be replaced to their original relative positions and contoured so as to achieve erosion control, long-term stability and preservation of surface water flow patterns.

**Existing Vegetation at the well pad:** Shinnery, yucca, grasses and mesquite.

**Existing Vegetation at the well pad attachment:**

**Existing Vegetation Community at the road:** Shinnery, yucca, grasses and mesquite.

**Existing Vegetation Community at the road attachment:**

**Existing Vegetation Community at the pipeline:** Shinnery, yucca, grasses and mesquite.

**Existing Vegetation Community at the pipeline attachment:**

**Existing Vegetation Community at other disturbances:** Shinnery, yucca, grasses and mesquite.

**Existing Vegetation Community at other disturbances attachment:**

**Non native seed used?** NO

**Non native seed description:**

**Seedling transplant description:**

**Will seedlings be transplanted for this project?** NO

**Seedling transplant description attachment:**

**Will seed be harvested for use in site reclamation?** NO

**Seed harvest description:**

**Seed harvest description attachment:**

**Operator Name:** DEVON ENERGY PRODUCTION COMPANY LP

**Well Name:** FLAGLER 8 FED

**Well Number:** 25H

## **Seed Management**

### **Seed Table**

**Seed type:**

**Seed source:**

**Seed name:**

**Source name:**

**Source address:**

**Source phone:**

**Seed cultivar:**

**Seed use location:**

**PLS pounds per acre:**

**Proposed seeding season:**

### **Seed Summary**

**Total pounds/Acre:**

**Seed Type**

**Pounds/Acre**

**Seed reclamation attachment:**

### **Operator Contact/Responsible Official Contact Info**

**First Name:** Travis

**Last Name:** Phibbs

**Phone:** (575)748-9929

**Email:** travis.phibbs@dvn.com

**Seedbed prep:**

**Seed BMP:**

**Seed method:**

**Existing invasive species?** NO

**Existing invasive species treatment description:**

**Existing invasive species treatment attachment:**

**Weed treatment plan description:** Maintain weeds on an as need basis.

**Weed treatment plan attachment:**

**Monitoring plan description:** Monitor as needed.

**Monitoring plan attachment:**

**Success standards:** N/A

**Pit closure description:** N/A

**Pit closure attachment:**

**Operator Name:** DEVON ENERGY PRODUCTION COMPANY LP

**Well Name:** FLAGLER 8 FED

**Well Number:** 25H

## **Section 11 - Surface Ownership**

**Disturbance type:** NEW ACCESS ROAD

**Describe:**

**Surface Owner:** BUREAU OF LAND MANAGEMENT

**Other surface owner description:**

**BIA Local Office:**

**BOR Local Office:**

**COE Local Office:**

**DOD Local Office:**

**NPS Local Office:**

**State Local Office:**

**Military Local Office:**

**USFWS Local Office:**

**Other Local Office:**

**USFS Region:**

**USFS Forest/Grassland:**

**USFS Ranger District:**

**Disturbance type:** EXISTING ACCESS ROAD

**Describe:**

**Surface Owner:** BUREAU OF LAND MANAGEMENT

**Other surface owner description:**

**BIA Local Office:**

**BOR Local Office:**

**COE Local Office:**

**DOD Local Office:**

**NPS Local Office:**

**State Local Office:**

**Military Local Office:**

**USFWS Local Office:**

**Other Local Office:**

**USFS Region:**

**Operator Name:** DEVON ENERGY PRODUCTION COMPANY LP

**Well Name:** FLAGLER 8 FED

**Well Number:** 25H

**USFS Forest/Grassland:**

**USFS Ranger District:**

**Disturbance type:** PIPELINE

**Describe:**

**Surface Owner:** BUREAU OF LAND MANAGEMENT

**Other surface owner description:**

**BIA Local Office:**

**BOR Local Office:**

**COE Local Office:**

**DOD Local Office:**

**NPS Local Office:**

**State Local Office:**

**Military Local Office:**

**USFWS Local Office:**

**Other Local Office:**

**USFS Region:**

**USFS Forest/Grassland:**

**USFS Ranger District:**

**Disturbance type:** WELL PAD

**Describe:**

**Surface Owner:** BUREAU OF LAND MANAGEMENT

**Other surface owner description:**

**BIA Local Office:**

**BOR Local Office:**

**COE Local Office:**

**DOD Local Office:**

**NPS Local Office:**

**State Local Office:**

**Military Local Office:**



**Operator Name:** DEVON ENERGY PRODUCTION COMPANY LP

**Well Name:** FLAGLER 8 FED

**Well Number:** 25H

**USFWS Local Office:**

**Other Local Office:**

**USFS Region:**

**USFS Forest/Grassland:**

**USFS Ranger District:**

## **Section 12 - Other Information**

**Right of Way needed?** YES

**Use APD as ROW?** YES

**ROW Type(s):** 281001 ROW - ROADS, 288100 ROW - O&G Pipeline, 288101 ROW - O&G Facility Sites, 289001 ROW - O&G Well Pad, FLPMA (Powerline), Other

### **ROW Applications**

**SUPO Additional Information:** PERMITTING NINE WELLS ON PAD. SEE C-102 FOR GRADING PLAN PLATS. SEE SEC. 4 FOR INFRASTRUCTURE PLATS.

**Use a previously conducted onsite?** YES

**Previous Onsite information:** Onsite 11/9/2017

### **Other SUPO Attachment**



U.S. Department of the Interior  
BUREAU OF LAND MANAGEMENT

## Operator Certification Data Report

07/16/2018

### Operator Certification

*I hereby certify that I, or someone under my direct supervision, have inspected the drill site and access route proposed herein; that I am familiar with the conditions which currently exist; that I have full knowledge of state and Federal laws applicable to this operation; that the statements made in this APD package are, to the best of my knowledge, true and correct; and that the work associated with the operations proposed herein will be performed in conformity with this APD package and the terms and conditions under which it is approved. I also certify that I, or the company I represent, am responsible for the operations conducted under this application. These statements are subject to the provisions of 18 U.S.C. 1001 for the filing of false statements.*

**NAME:** Rebecca Deal

**Signed on:** 03/15/2018

**Title:** Regulatory Compliance Professional

**Street Address:** 333 West Sheridan Avenue

**City:** Oklahoma City

**State:** OK

**Zip:** 73102

**Phone:** (405)228-8429

**Email address:** Rebecca.Deal@dvn.com

### Field Representative

**Representative Name:** Travis Phibbs

**Street Address:** 6488 Seven Rivers Hwy

**City:** Artesia

**State:** NM

**Zip:** 88210

**Phone:** (575)748-9929

**Email address:** travis.phibbs@dvn.com



U.S. Department of the Interior  
BUREAU OF LAND MANAGEMENT

## Application Data Report

07/16/2018

APD ID: 10400028293

Submission Date: 03/16/2018

Operator Name: DEVON ENERGY PRODUCTION COMPANY LP

Well Name: FLAGLER 8 FED

Well Number: 25H

Well Type: OIL WELL

Well Work Type: Drill

Highlighted data  
reflects the most  
recent changes

[Show Final Text](#)

### Section 1 - General

APD ID: 10400028293

Tie to previous NOS?

Submission Date: 03/16/2018

BLM Office: CARLSBAD

User: Rebecca Deal

Title: Regulatory Compliance  
Professional

Federal/Indian APD: FED

Is the first lease penetrated for production Federal or Indian? FED

Lease number: NMNM097151

Lease Acres: 520

Surface access agreement in place?

Allotted?

Reservation:

Agreement in place? NO

Federal or Indian agreement:

Agreement number:

Agreement name:

Keep application confidential? YES

Permitting Agent? NO

APD Operator: DEVON ENERGY PRODUCTION COMPANY LP

Operator letter of designation:

### Operator Info

Operator Organization Name: DEVON ENERGY PRODUCTION COMPANY LP

Operator Address: 333 West Sheridan Avenue

Zip: 73102

Operator PO Box:

Operator City: Oklahoma City

State: OK

Operator Phone: (405)552-6571

Operator Internet Address:

### Section 2 - Well Information

Well in Master Development Plan? NO

Master Development Plan name:

Well in Master SUPO? NO

Master SUPO name:

Well in Master Drilling Plan? NO

Master Drilling Plan name:

Well Name: FLAGLER 8 FED

Well Number: 25H

Well API Number:

Field/Pool or Exploratory? Field and Pool

Field Name: RED HILLS

Pool Name: UPPER BONE  
SPRING SHALE

Operator Name: DEVON ENERGY PRODUCTION COMPANY LP

Well Name: FLAGLER 8 FED

Well Number: 25H

Is the proposed well in an area containing other mineral resources? USEABLE WATER

Describe other minerals:

Is the proposed well in a Helium production area? N Use Existing Well Pad? NO New surface disturbance?

Type of Well Pad: MULTIPLE WELL

Multiple Well Pad Name:

Number: 3

Well Class: HORIZONTAL

FLAGLER 8

Number of Legs: 1

Well Work Type: Drill

Well Type: OIL WELL

Describe Well Type:

Well sub-Type: INFILL

Describe sub-type:

Distance to town:

Distance to nearest well: 4323 FT

Distance to lease line: 380 FT

Reservoir well spacing assigned acres Measurement: 160 Acres

Well plat: Flagler\_8\_Fed\_25H\_C\_102\_Signed\_20180612114916.pdf

Well work start Date: 03/10/2019

Duration: 45 DAYS

### Section 3 - Well Location Table

Survey Type: RECTANGULAR

Describe Survey Type:

Datum: NAD83

Vertical Datum: NAVD88

Survey number:

	NS-Foot	NS Indicator	EW-Foot	EW Indicator	Twsp	Range	Section	Aliquot/Lot/Tract	Latitude	Longitude	County	State	Meridian	Lease Type	Lease Number	Elevation	MD	TVD
SHL Leg #1	380	FSL	260 0	FWL	25S	33E	8	Aliquot SESW	32.13889 91	- 103.5944 394	LEA	NEW MEXI CO	NEW MEXI CO	F	NMNM 097151	344 7	0	0
KOP Leg #1	200	FSL	218 0	FWL	25S	33E	8	Aliquot SESW	32.13835 8	- 103.5959	LEA	NEW MEXI CO	NEW MEXI CO	F	NMNM 097151	- 578 0	925 0	922 7
PPP Leg #1	330	FSL	218 0	FWL	25S	33E	8	Aliquot SESW	32.13877	- 103.5958 97	LEA	NEW MEXI CO	NEW MEXI CO	F	NMNM 097151	- 586 6	967 3	931 3

Operator Name: DEVON ENERGY PRODUCTION COMPANY LP

Well Name: FLAGLER 8 FED

Well Number: 25H

	NS-Foot	NS Indicator	EW-Foot	EW Indicator	Twsp	Range	Section	Aliquot/Lot/Tract	Latitude	Longitude	County	State	Meridian	Lease Type	Lease Number	Elevation	MD	TVD
EXIT Leg #1	330	FNL	218 0	FWL	25S	33E	8	Aliquot NENW	32.15145 97	- 103.5957 946	LEA	NEW MEXI CO	NEW MEXI CO	F	NMNM 097151	- 635 3	143 43	980 0
BHL Leg #1	330	FNL	218 0	FWL	25S	33E	8	Aliquot NENW	32.15145 97	- 103.5957 946	LEA	NEW MEXI CO	NEW MEXI CO	F	NMNM 097151	- 635 3	143 43	980 0

**ACCESS ROAD PLAT**

**ACCESS ROAD FOR FLAGLER 8 WELLPAD 3  
(FLAGLER 8 FEDERAL 38H, 32H, 39H, 25H, 20H, 26H, 7H, 3H, & 11H)**

**DEVON ENERGY PRODUCTION COMPANY, L.P.  
CENTERLINE SURVEY OF AN ACCESS ROAD CROSSING  
SECTION 8, TOWNSHIP 25 SOUTH, RANGE 33 EAST, N.M.P.M.  
LEA COUNTY, STATE OF NEW MEXICO  
JANUARY 28, 2018**

**DESCRIPTION**

A STRIP OF LAND 30 FEET WIDE CROSSING BUREAU OF LAND MANAGEMENT LAND IN SECTION 8, TOWNSHIP 25 SOUTH, RANGE 33 EAST, N.M.P.M., LEA COUNTY, STATE OF NEW MEXICO AND BEING 15 FEET EACH SIDE OF THE FOLLOWING DESCRIBED CENTERLINE SURVEY:

BEGINNING AT A POINT WITHIN THE SW/4 SE/4 OF SAID SECTION 8, TOWNSHIP 25 SOUTH, RANGE 33 EAST, N.M.P.M., WHENCE THE SOUTH QUARTER CORNER OF SAID SECTION 8, TOWNSHIP 25 SOUTH, RANGE 33 EAST, N.M.P.M. BEARS S24°58'40"W, A DISTANCE OF 697.10 FEET;  
THENCE N00°21'53"W A DISTANCE OF 399.75 FEET TO AN ANGLE POINT OF THE LINE HEREIN DESCRIBED;  
THENCE N60°26'34"E A DISTANCE OF 513.28 FEET THE TERMINUS OF THIS CENTERLINE SURVEY, WHENCE THE SOUTHEAST CORNER OF SAID SECTION 8, TOWNSHIP 25 SOUTH, RANGE 33 EAST, N.M.P.M. BEARS S56°21'41"E, A DISTANCE OF 2288.28 FEET;

SAID STRIP OF LAND BEING 913.03 FEET OR 55.34 RODS IN LENGTH, CONTAINING 0.629 ACRES MORE OR LESS AND BEING ALLOCATED BY FORTIES AS FOLLOWS:

SW/4 SE/4 913.03 L.F. 55.34 RODS 0.629 ACRES

**SURVEYOR CERTIFICATE**

I, FILMON F. JARAMILLO, A NEW MEXICO PROFESSIONAL SURVEYOR NO. 12797, HEREBY CERTIFY THAT I HAVE CONDUCTED AND AM RESPONSIBLE FOR THIS SURVEY, THAT THIS SURVEY IS TRUE AND CORRECT TO THE BEST OF MY KNOWLEDGE AND BELIEF, AND THAT THIS SURVEY AND PLAT MEET THE MINIMUM STANDARDS FOR LAND SURVEYING IN THE STATE OF NEW MEXICO.

IN WITNESS WHEREOF, THIS CERTIFICATE IS EXECUTED AT CARLSBAD,

NEW MEXICO, THIS 16 DAY OF FEBRUARY 2018

  
FILMON F. JARAMILLO DES. 12797

MADRON SURVEYING, INC.  
301 SOUTH CANAL  
CARLSBAD, NEW MEXICO 88220  
Phone (575) 234-3341

**GENERAL NOTES**

- 1.) THE INTENT OF THIS ROUTE SURVEY IS TO ACQUIRE AN EASEMENT.
- 2.) BASIS OF BEARING AND DISTANCE IS NMSP EAST (NAD83) MODIFIED TO SURFACE COORDINATES. NAD 83 (FEET) AND NAVD 88 (FEET) COORDINATE SYSTEMS USED IN THE SURVEY.

**SHEET: 2-2**

**MADRON SURVEYING, INC. CARLSBAD, NEW MEXICO**

**SURVEY NO. 5832A**



U.S. Department of the Interior  
BUREAU OF LAND MANAGEMENT

## Drilling Plan Data Report

07/16/2018

APD ID: 10400028293

Submission Date: 03/16/2018

Operator Name: DEVON ENERGY PRODUCTION COMPANY LP

Well Name: FLAGLER 8 FED

Well Number: 25H

Well Type: OIL WELL

Well Work Type: Drill

Right-clicked data  
reflects the most  
recent changes

Show Final Text

### Section 1 - Geologic Formations

Formation ID	Formation Name	Elevation	True Vertical Depth	Measured Depth	Lithologies	Mineral Resources	Producing Formation
1	---	3467	0	0	OTHER : Surface	NONE	No
2	RUSTLER	2322	1145	1145	SANDSTONE	NONE	No
3	TOP SALT	1959	1508	1508	SALT	NONE	No
4	BELL CANYON	-1533	5000	5000	SANDSTONE	NATURAL GAS,OIL	No
5	BASE OF SALT	-1533	5000	5000	LIMESTONE	NONE	No
6	CHERRY CANYON	-2573	6040	6040	SANDSTONE	NATURAL GAS,OIL	No
7	BRUSHY CANYON	-4223	7690	7690	SANDSTONE	NATURAL GAS,OIL	No
8	BONE SPRING	-5643	9110	9110	SHALE	NATURAL GAS,OIL	Yes
9	BONE SPRING 1ST	-6549	10016	10016	SANDSTONE	NATURAL GAS,OIL	No

### Section 2 - Blowout Prevention

Pressure Rating (PSI): 3M

Rating Depth: 5000

**Equipment:** BOP/BOPE will be installed per Onshore Oil & Gas Order #2 requirements prior to drilling below 13-3/8" surface casing, a 13-5/8" BOP/BOPE system with a minimum rating of 5M will be installed on the wellhead system. BOP/BOPE will be tested by an independent service company per Onshore Oil & Gas Order #2 requirements and MASP (Maximum Anticipated Surface Pressure) calculations. If the system is upgraded, all the components installed will be functional and tested.

**Requesting Variance?** YES

**Variance request:** A variance is requested for the use of a flexible choke line from the BOP stack to the choke manifold. See attached for specs for hydrostatic test chart.

**Testing Procedure:** A multibowl wellhead may be used. The BOP will be tested per Onshore Order #2 after installation on the surface casing which will cover testing requirements for a maximum of 30 days. If any seal subject to test pressure is broken the system must be tested.

**Choke Diagram Attachment:**

Flagler\_8\_Fed\_25H\_3M\_BOPE\_CK\_20180312121754.pdf

**Operator Name:** DEVON ENERGY PRODUCTION COMPANY LP

**Well Name:** FLAGLER 8 FED

**Well Number:** 25H

Flagler\_8\_Fed\_25H\_3M\_BOPE\_CK\_20180312121754.pdf

**BOP Diagram Attachment:**

Flagler\_8\_Fed\_25H\_3M\_BOPE\_CK\_20180312121810.pdf

**Pressure Rating (PSI):** 3M

**Rating Depth:** 9800

**Equipment:** BOP/BOPE will be installed per Onshore Oil & Gas Order #2 requirements prior to drilling below 13-3/8" surface casing, a 13-5/8" BOP/BOPE system with a minimum rating of 5M will be installed on the wellhead system. BOP/BOPE will be tested by an independent service company per Onshore Oil & Gas Order #2 requirements and MASP (Maximum Anticipated Surface Pressure) calculations. If the system is upgraded, all the components installed will be functional and tested.

**Requesting Variance?** YES

**Variance request:** A variance is requested for the use of a flexible choke line from the BOP stack to the choke manifold. See attached for specs for hydrostatic test chart.

**Testing Procedure:** A multibowl wellhead may be used. The BOP will be tested per Onshore Order #2 after installation on the surface casing which will cover testing requirements for a maximum of 30 days. If any seal subject to test pressure is broken the system must be tested.

**Choke Diagram Attachment:**

Flagler\_8\_Fed\_25H\_3M\_BOPE\_CK\_20180312121824.pdf

**BOP Diagram Attachment:**

Flagler\_8\_Fed\_25H\_3M\_BOPE\_CK\_20180312121847.pdf

### Section 3 - Casing

Casing ID	String Type	Hole Size	Csg Size	Condition	Standard	Tapered String	Top Set MD	Bottom Set MD	Top Set TVD	Bottom Set TVD	Top Set MSL	Bottom Set MSL	Calculated casing length MD	Grade	Weight	Joint Type	Collapse SF	Burst SF	Joint SF Type	Joint SF	Body SF Type	Body SF
1	SURFACE	17.5	13.375	NEW	API	N	0	1150	0	1150			1150	H-40	48	OTHER - BTC	1.125	1.25	BUOY	1.6	BUOY	1.6
2	INTERMEDIATE	12.25	9.625	NEW	API	N	0	5000	0	5000			5000	J-55	40	OTHER - BTC	1.125	1.25	BUOY	1.6	BUOY	1.6
3	PRODUCTION	8.75	5.5	NEW	API	N	0	14343	0	9800			14343	P-110	17	OTHER - BTC	1.125	1.25	BUOY	1.6	BUOY	1.6

**Casing Attachments**



**Operator Name:** DEVON ENERGY PRODUCTION COMPANY LP

**Well Name:** FLAGLER 8 FED

**Well Number:** 25H

#### Casing Attachments

---

**Casing ID:** 1      **String Type:** SURFACE

**Inspection Document:**

**Spec Document:**

**Tapered String Spec:**

**Casing Design Assumptions and Worksheet(s):**

Flagler\_8\_Fed\_25H\_Surf\_Csg\_Ass\_20180312121902.pdf

---

**Casing ID:** 2      **String Type:** INTERMEDIATE

**Inspection Document:**

**Spec Document:**

**Tapered String Spec:**

**Casing Design Assumptions and Worksheet(s):**

Flagler\_8\_Fed\_25H\_Int\_Csg\_Ass\_20180312121918.pdf

---

**Casing ID:** 3      **String Type:** PRODUCTION

**Inspection Document:**

**Spec Document:**

**Tapered String Spec:**

**Casing Design Assumptions and Worksheet(s):**

Flagler\_8\_Fed\_25H\_Prod\_Csg\_Ass\_20180312121950.pdf

---

#### Section 4 - Cement

**Operator Name:** DEVON ENERGY PRODUCTION COMPANY LP

**Well Name:** FLAGLER 8 FED

**Well Number:** 25H

String Type	Lead/Tail	Stage Tool Depth	Top MD	Bottom MD	Quantity(sx)	Yield	Density	Cu Ft	Excess%	Cement type	Additives
SURFACE	Lead		0	815	901	1.33	14.8	1198	50	CLASS C	0.125 lbs/sack Poly-F-Flake

INTERMEDIATE	Lead		0	3950	511	3.65	10.3	1864	30	50:50 POZ	(65:35) Class C Cement: Poz (Fly Ash): 6% BWOC Bentonite + 5% BWOW Sodium Chloride + 0.125 lbs/sks Poly-E-Flake
INTERMEDIATE	Tail		3950	4450	306	1.33	14.8	407	30	C	0.125 lbs/sack Poly-F-Flake
PRODUCTION	Lead		4800	9700	457	3.27	9	1494	25	TUNED	N/A
PRODUCTION	Tail		9700	14343	1207	1.2	14.5	1449	25	CLASS H	(50:50) Clas H Cement: Poz (Fly Ash) + 0.5% bwoc HALAD-344 + 0.4% bwoc CFR-3 + 0.2% BWOC HR-601 + 2% bwoc Bentonite

## Section 5 - Circulating Medium

**Mud System Type:** Closed

**Will an air or gas system be Used?** NO

**Description of the equipment for the circulating system in accordance with Onshore Order #2:**

**Diagram of the equipment for the circulating system in accordance with Onshore Order #2:**

**Describe what will be on location to control well or mitigate other conditions:** Sufficient mud materials to maintain mud properties and meet minimum lost circulation and weight increase requirements will be kept on location at all times.

**Describe the mud monitoring system utilized:** PVT/Pason/Visual Monitoring

## Circulating Medium Table

**Operator Name:** DEVON ENERGY PRODUCTION COMPANY LP

**Well Name:** FLAGLER 8 FED

**Well Number:** 25H

Top Depth	Bottom Depth	Mud Type	Min Weight (lbs/gal)	Max Weight (lbs/gal)	Density (lbs/cu ft)	Gel Strength (lbs/100 sqft)	PH	Viscosity (CP)	Salinity (ppm)	Filtration (cc)	Additional Characteristics
0	1150	WATER-BASED MUD	8.4	9				2			
5000	1434 3	WATER-BASED MUD	8.33	9.3				12			
1150	5000	SALT SATURATED	9	10.5				2			

## Section 6 - Test, Logging, Coring

**List of production tests including testing procedures, equipment and safety measures:**

Will run GRMWD from TD to from KOP. Cement bond logs will be run in vertical to determine top of cement. Stated logs run will be in the Completion Report and submitted to the BLM.

**List of open and cased hole logs run in the well:**

CALIPER,CBL,DS,GR,MUDLOG

**Coring operation description for the well:**

N/A

## Section 7 - Pressure

**Anticipated Bottom Hole Pressure:** 4720

**Anticipated Surface Pressure:** 2564

**Anticipated Bottom Hole Temperature(F):** 160

**Anticipated abnormal pressures, temperatures, or potential geologic hazards?** NO

**Describe:**

**Contingency Plans geohazards description:**

**Contingency Plans geohazards attachment:**

**Hydrogen Sulfide drilling operations plan required?** YES

**Hydrogen sulfide drilling operations plan:**

Flagler\_8\_Federal\_25H\_H2S\_Plan\_20180312122238.pdf

**Operator Name:** DEVON ENERGY PRODUCTION COMPANY LP

**Well Name:** FLAGLER 8 FED

**Well Number:** 25H

## **Section 8 - Other Information**

### **Proposed horizontal/directional/multi-lateral plan submission:**

Flagler\_8\_Fed\_25H\_Dir\_Svy\_20180312122419.pdf

Flagler\_8\_Fed\_25H\_Plot\_20180312122439.pdf

### **Other proposed operations facets description:**

MULTI-BOWL VERBIAGE  
MULTI-BOWL WELLHEAD  
CLOSED LOOP DESIGN PLAN  
DRILLING PLAN  
CO-FLEX HOSE  
SPUDDER RIG REQUEST  
AC REPORT

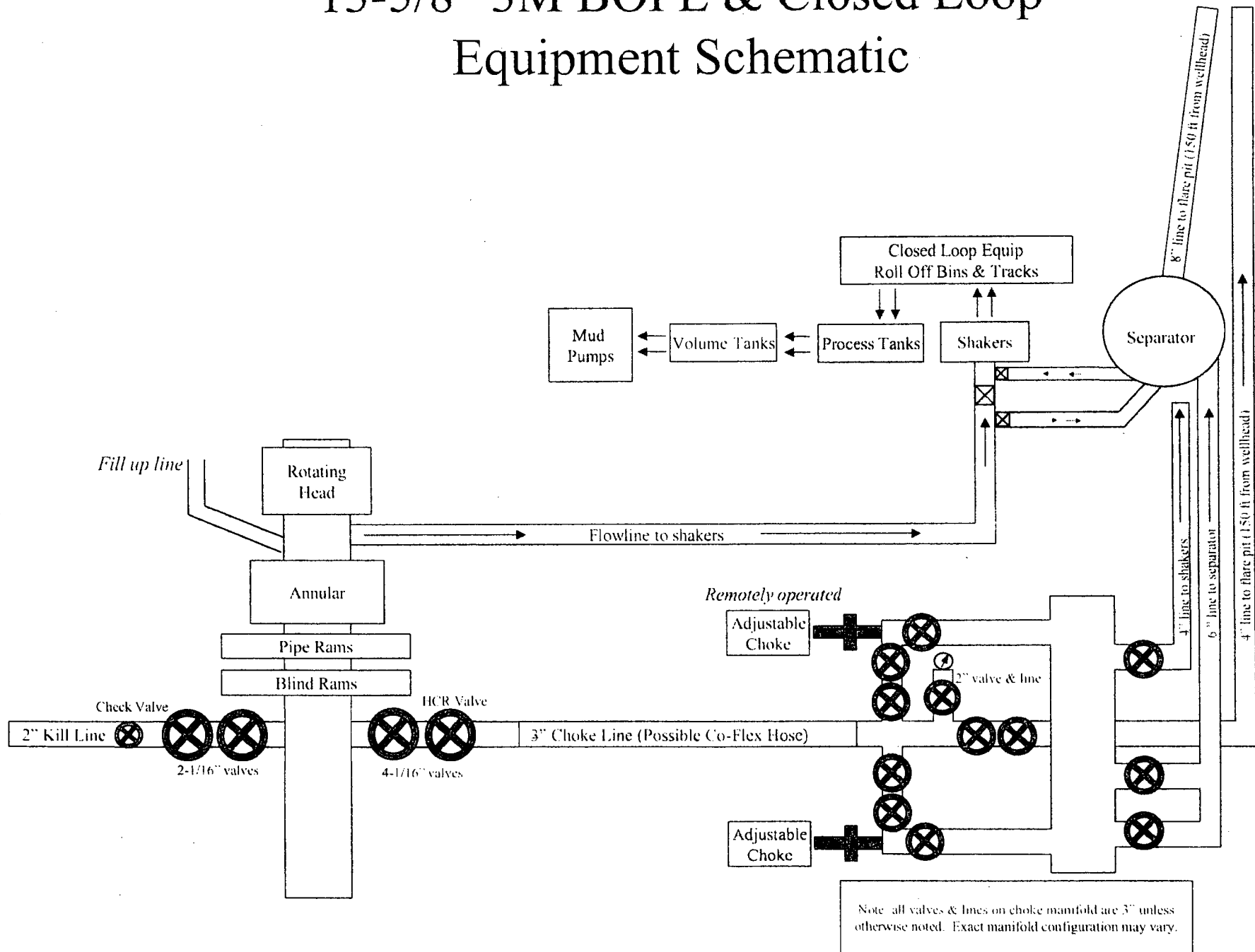
### **Other proposed operations facets attachment:**

Flagler\_8\_Fed\_25H\_AC\_Report\_20180312122521.pdf  
Flagler\_8\_Fed\_25H\_Clsd\_Loop\_20180312122522.pdf  
Flagler\_8\_Fed\_25H\_MB\_Verb\_3M\_20180312122522.pdf  
Flagler\_8\_Fed\_25H\_MB\_Wellhd\_3M\_20180312122523.pdf  
Flagler\_8\_Fed\_25H\_Spudder\_Rig\_Info\_20180312122523.pdf  
Flagler\_8\_Fed\_25H\_GCP\_Form\_20180612114935.pdf  
Flagler\_8\_Fed\_25H\_Drilling\_Plan\_20180612115058.pdf

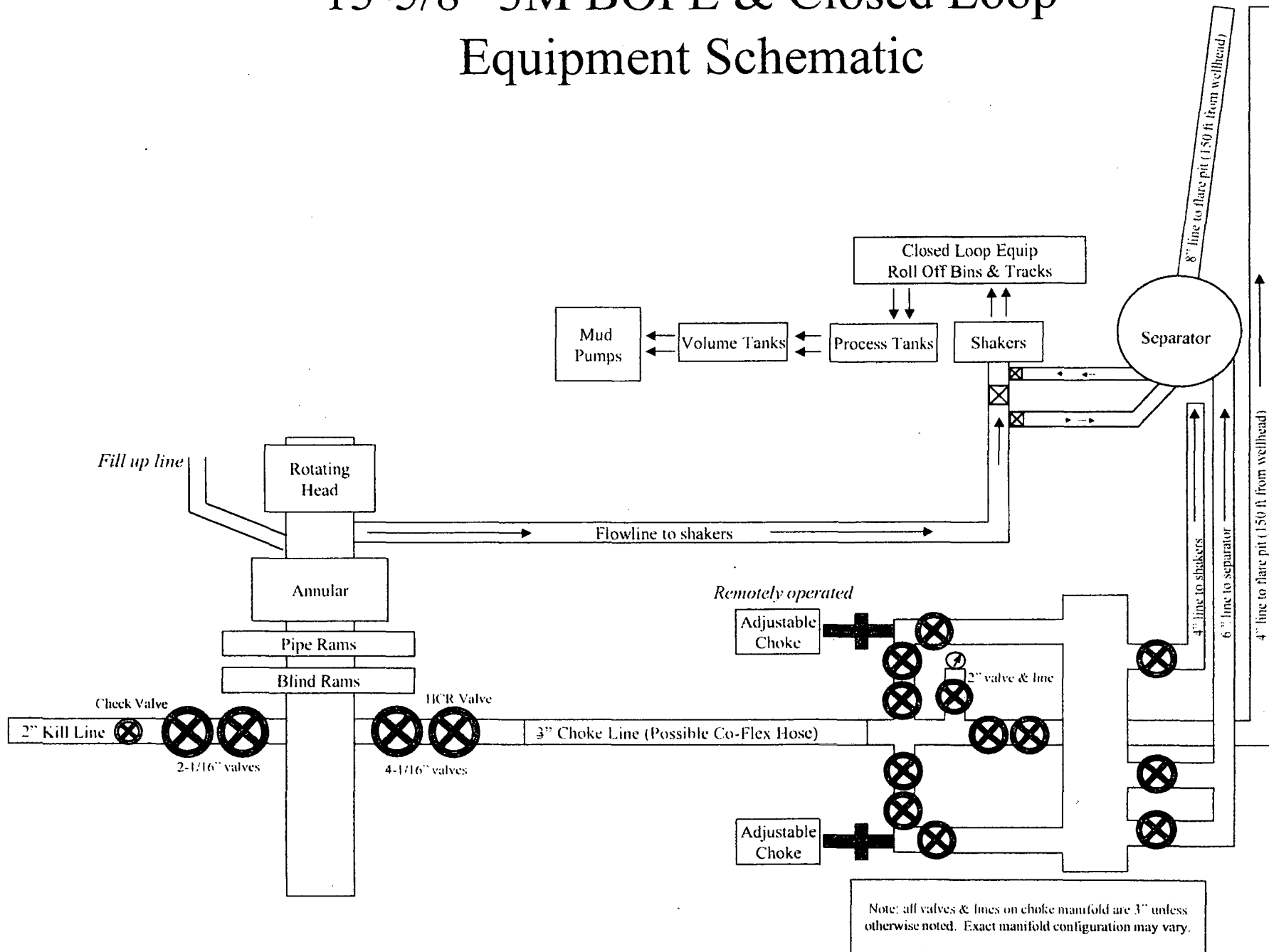
### **Other Variance attachment:**

Flagler\_8\_Fed\_25H\_Co\_flex\_20180312122532.pdf

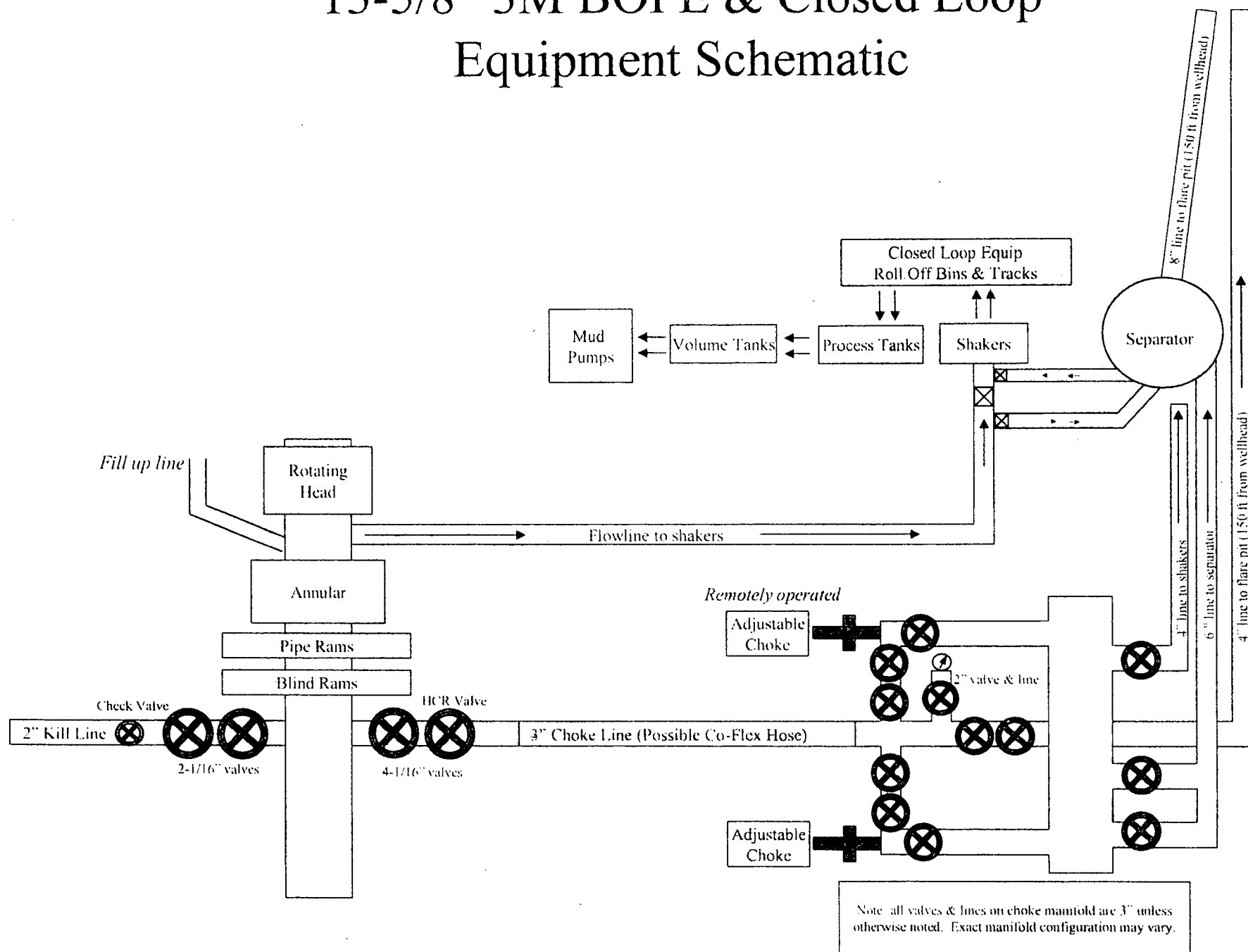
# 13-5/8" 3M BOPE & Closed Loop Equipment Schematic



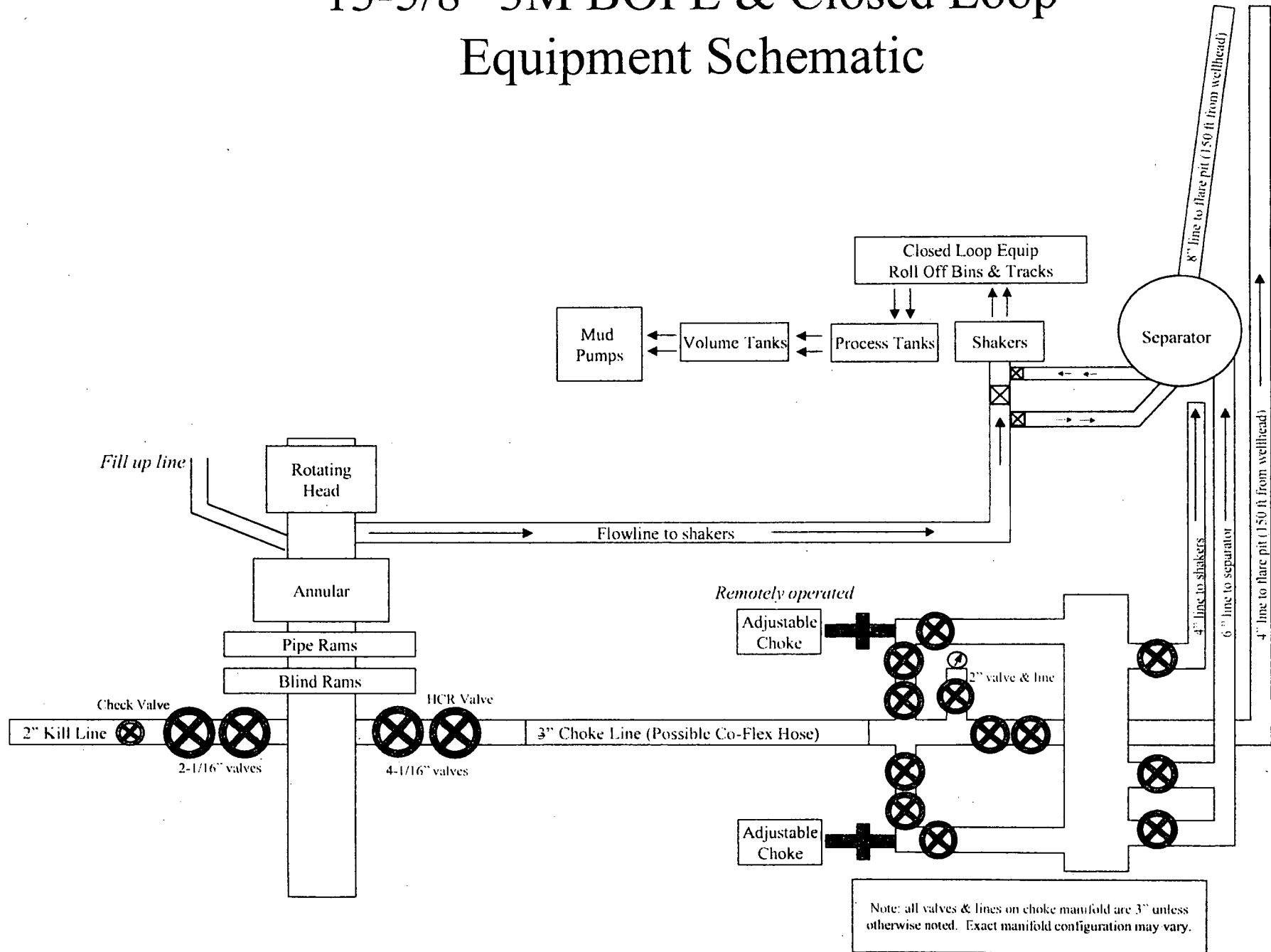
# 13-5/8" 3M BOPE & Closed Loop Equipment Schematic



# 13-5/8" 3M BOPE & Closed Loop Equipment Schematic



# 13-5/8" 3M BOPE & Closed Loop Equipment Schematic





## Casing Assumptions and Load Cases

### Intermediate

All casing design assumptions were ran in Stress Check to determine safety factor which meet or exceed both Devon Energy and BLM minimum requirements. All casing strings will be filled while running in hole in order to not exceed collapse rating of the pipe.

Intermediate Casing Burst Design		
Load Case	External Pressure	Internal Pressure
Pressure Test	Formation Pore Pressure	Max mud weight of next hole-section plus Test psi
Drill Ahead	Formation Pore Pressure	Max mud weight of next hole section
Fracture @ Shoe	Formation Pore Pressure	Dry gas

Intermediate Casing Collapse Design		
Load Case	External Pressure	Internal Pressure
Full Evacuation	Water gradient in cement, mud above TOC	None
Cementing	Wet cement weight	Water (8.33ppg)

Intermediate Casing Tension Design	
Load Case	Assumptions
Overpull	100kips
Runing in hole	2 ft/s
Service Loads	N/A

## Casing Assumptions and Load Cases

### Production

All casing design assumptions were ran in Stress Check to determine safety factor which meet or exceed both Devon Energy and BLM minimum requirements. All casing strings will be filled while running in hole in order to not exceed collapse rating of the pipe.

Production Casing Burst Design		
Load Case	External Pressure	Internal Pressure
Pressure Test	Formation Pore Pressure	Fluid in hole (water or produced water) + test psi
Tubing Leak	Formation Pore Pressure	Packer @ KOP, leak below surface 8.6 ppg packer fluid
Stimulation	Formation Pore Pressure	Max frac pressure with heaviest frac fluid

Production Casing Collapse Design		
Load Case	External Pressure	Internal Pressure
Full Evacuation	Water gradient in cement, mud above TOC.	None
Cementing	Wet cement weight	Water (8.33ppg)

Production Casing Tension Design	
Load Case	Assumptions
Overpull	100kips
Runing in hole	2 ft/s
Service Loads	N/A

## Casing Assumptions and Load Cases

### Surface

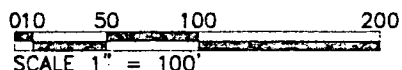
All casing design assumptions were ran in Stress Check to determine safety factor which meet or exceed both Devon Energy and BLM minimum requirements. All casing strings will be filled while running in hole in order to not exceed collapse rating of the pipe.

Surface Casing Burst Design		
Load Case	External Pressure	Internal Pressure
Pressure Test	Formation Pore Pressure	Max mud weight of next hole-section plus Test psi
Drill Ahead	Formation Pore Pressure	Max mud weight of next hole section
Displace to Gas	Formation Pore Pressure	Dry gas from next casing point

Surface Casing Collapse Design		
Load Case	External Pressure	Internal Pressure
Full Evacuation	Water gradient in cement, mud above TOC	None
Cementing	Wet cement weight	Water (8.33ppg)

Surface Casing Tension Design	
Load Case	Assumptions
Overpull	100kips
Runing in hole	3 ft/s
Service Loads	N/A

PROPOSED 913 L.F.  
ACCESS ROAD



**DEVON ENERGY PRODUCTION COMPANY, L.P.**  
**FLAGLER 8 FEDERAL 25H**  
LOCATED 380 FT. FROM THE SOUTH LINE  
AND 2600 FT. FROM THE WEST LINE OF  
SECTION 8, TOWNSHIP 25 SOUTH,  
RANGE 33 EAST, N.M.P.M.  
LEA COUNTY, STATE OF NEW MEXICO

**JANUARY 28, 2018**

**SURVEY NO. 5832A**

**MADRON SURVEYING, INC.** 301 SOUTH CANA  
(575) 234-3341

CARLSBAD, NEW MEXICO



U.S. Department of the Interior  
BUREAU OF LAND MANAGEMENT

## PWD Data Report

07/16/2018

### Section 1 - General

Would you like to address long-term produced water disposal? NO

### Section 2 - Lined Pits

Would you like to utilize Lined Pit PWD options? NO

Produced Water Disposal (PWD) Location:

PWD surface owner:

PWD disturbance (acres):

Lined pit PWD on or off channel:

Lined pit PWD discharge volume (bbl/day):

Lined pit specifications:

Pit liner description:

Pit liner manufacturers information:

Precipitated solids disposal:

Describe precipitated solids disposal:

Precipitated solids disposal permit:

Lined pit precipitated solids disposal schedule:

Lined pit precipitated solids disposal schedule attachment:

Lined pit reclamation description:

Lined pit reclamation attachment:

Leak detection system description:

Leak detection system attachment:

Lined pit Monitor description:

Lined pit Monitor attachment:

Lined pit: do you have a reclamation bond for the pit?

Is the reclamation bond a rider under the BLM bond?

Lined pit bond number:

Lined pit bond amount:

Additional bond information attachment:

### **Section 3 - Unlined Pits**

Would you like to utilize Unlined Pit PWD options? NO

Produced Water Disposal (PWD) Location:

PWD surface owner:

PWD disturbance (acres):

Unlined pit PWD on or off channel:

Unlined pit PWD discharge volume (bbl/day):

Unlined pit specifications:

Precipitated solids disposal:

Describe precipitated solids disposal:

Precipitated solids disposal permit:

Unlined pit precipitated solids disposal schedule:

Unlined pit precipitated solids disposal schedule attachment:

Unlined pit reclamation description:

Unlined pit reclamation attachment:

Unlined pit Monitor description:

Unlined pit Monitor attachment:

Do you propose to put the produced water to beneficial use?

Beneficial use user confirmation:

Estimated depth of the shallowest aquifer (feet):

Does the produced water have an annual average Total Dissolved Solids (TDS) concentration equal to or less than that of the existing water to be protected?

TDS lab results:

Geologic and hydrologic evidence:

State authorization:

Unlined Produced Water Pit Estimated percolation:

Unlined pit: do you have a reclamation bond for the pit?

Is the reclamation bond a rider under the BLM bond?

Unlined pit bond number:

Unlined pit bond amount:

Additional bond information attachment:

### **Section 4 - Injection**

Would you like to utilize Injection PWD options? NO

Produced Water Disposal (PWD) Location:

PWD surface owner:

PWD disturbance (acres):

Injection PWD discharge volume (bbl/day):

Injection well mineral owner:

**Injection well type:**

**Injection well number:**

**Injection well name:**

**Assigned injection well API number?**

**Injection well API number:**

**Injection well new surface disturbance (acres):**

**Minerals protection information:**

**Mineral protection attachment:**

**Underground Injection Control (UIC) Permit?**

**UIC Permit attachment:**

## **Section 5 - Surface Discharge**

**Would you like to utilize Surface Discharge PWD options? NO**

**Produced Water Disposal (PWD) Location:**

**PWD surface owner:**

**PWD disturbance (acres):**

**Surface discharge PWD discharge volume (bbl/day):**

**Surface Discharge NPDES Permit?**

**Surface Discharge NPDES Permit attachment:**

**Surface Discharge site facilities information:**

**Surface discharge site facilities map:**

## **Section 6 - Other**

**Would you like to utilize Other PWD options? NO**

**Produced Water Disposal (PWD) Location:**

**PWD surface owner:**

**PWD disturbance (acres):**

**Other PWD discharge volume (bbl/day):**

**Other PWD type description:**

**Other PWD type attachment:**

**Have other regulatory requirements been met?**

**Other regulatory requirements attachment:**



U.S. Department of the Interior  
BUREAU OF LAND MANAGEMENT

## Bond Info Data Report

07/16/2018

### Bond Information

Federal/Indian APD: FED

BLM Bond number: CO1104

BIA Bond number:

Do you have a reclamation bond? NO

Is the reclamation bond a rider under the BLM bond?

Is the reclamation bond BLM or Forest Service?

BLM reclamation bond number:

Forest Service reclamation bond number:

Forest Service reclamation bond attachment:

Reclamation bond number:

Reclamation bond amount:

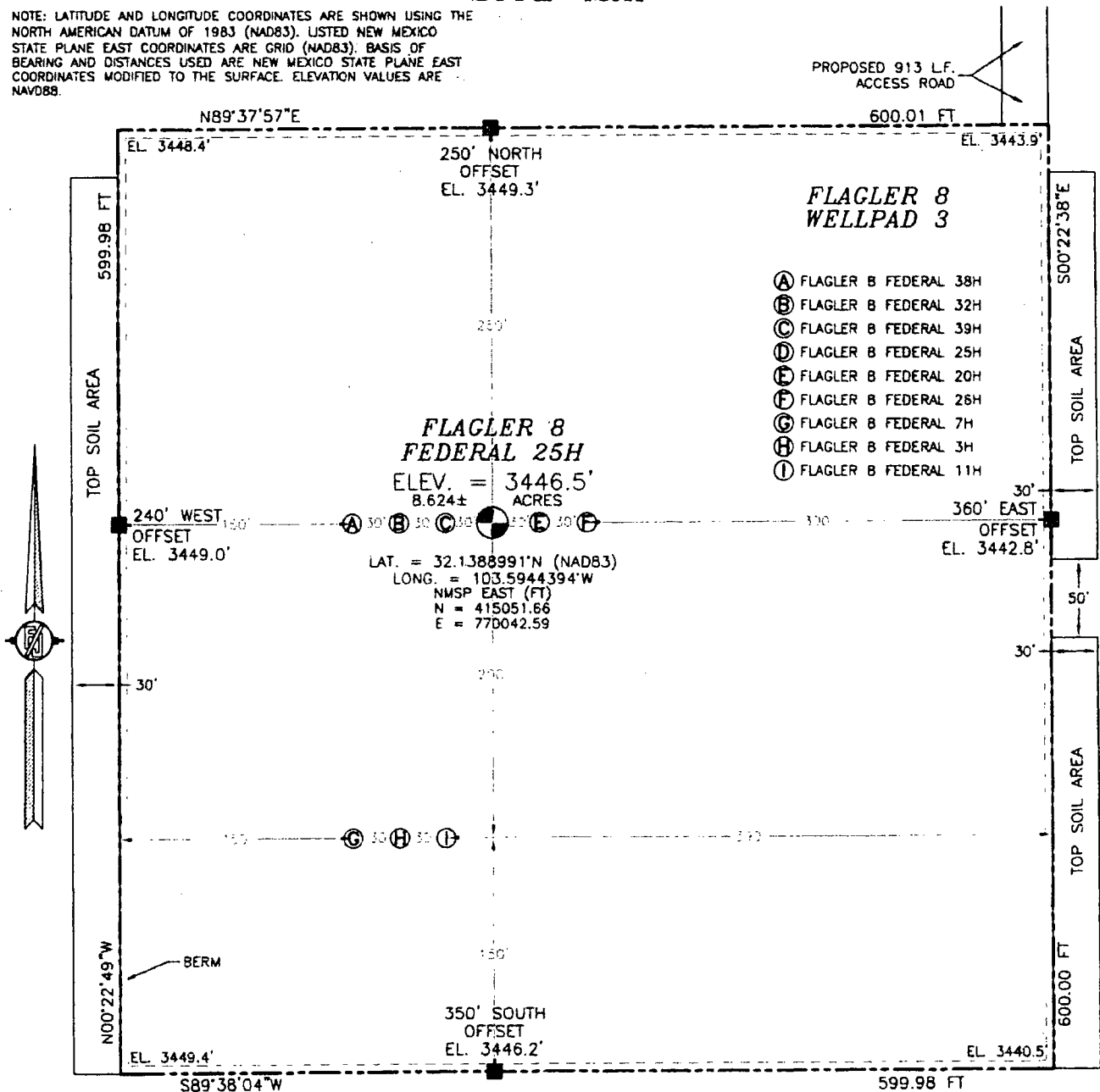
Reclamation bond rider amount:

Additional reclamation bond information attachment:



**SECTION 8, TOWNSHIP 25 SOUTH, RANGE 33 EAST, N.M.P.M.  
LEA COUNTY, STATE OF NEW MEXICO  
SITE MAP**

NOTE: LATITUDE AND LONGITUDE COORDINATES ARE SHOWN USING THE NORTH AMERICAN DATUM OF 1983 (NAD83). LISTED NEW MEXICO STATE PLANE EAST COORDINATES ARE GRID (NAD83). BASIS OF BEARING AND DISTANCES USED ARE NEW MEXICO STATE PLANE EAST COORDINATES MODIFIED TO THE SURFACE. ELEVATION VALUES ARE NAVD83.



010 50 100 200  
SCALE 1" = 100'

**DIRECTIONS TO LOCATION**

FROM THE INTERSECTION OF HWY. 128 & DIAMOND ROAD, GO SOUTH ON DIAMOND ROAD APPROX. 2.4 MILES WHERE PAVEMENT ENDS & RANCH HOUSE, CONTINUE SOUTH APPROX. 0.5 MILE TO A Y INTERSECTION, GO SOUTH APPROX. 0.8 MILE TO A CATTLE GUARD, CONTINUE SOUTH APPROX. 1.1 MILE TO A Y INTERSECTION, GO SOUTHWEST ON LEASE ROAD APPROX 0.8 MILE TO A LEASE ROAD ON RIGHT (WEST), TURN WEST (RIGHT) GO 1.0 MILE TO GATE, GO THROUGH GATE TO A PROPOSED ROAD SURVEY, FOLLOW PROPOSED ROAD SOUTH 625' TO A PROPOSED T INTERSECTION, GO WEST 0.34 MILE TO A PROPOSED Y INTERSECTION, GO SOUTHWEST 513' AND SOUTH 400' TO THE NORTHEAST PAD CORNER FOR THIS LOCATION.

**DEVON ENERGY PRODUCTION COMPANY, L.P.**

**FLAGLER 8 FEDERAL 25H**

**LOCATED 380 FT. FROM THE SOUTH LINE  
AND 2600 FT. FROM THE WEST LINE OF  
SECTION 8, TOWNSHIP 25 SOUTH,  
RANGE 33 EAST, N.M.P.M.  
LEA COUNTY, STATE OF NEW MEXICO**

**JANUARY 28, 2018**

**SURVEY NO. 5832A**

**MADRON SURVEYING, INC. CARLSBAD, NEW MEXICO**