

State of New Mexico
Energy, Minerals and Natural Resources Department

Susana Martinez
Governor

Ken McQueen
Cabinet Secretary

Matthias Sayer
Deputy Cabinet Secretary

Heather Riley
Division Director



Response Required - Deadline Enclosed

*Underground Injection Control Program
"Protecting Our Underground Sources of Drinking Water"*

26-Jul-18

STEVENSON OIL COMPANY, INC.
COMBO 3303

**LETTER OF VIOLATION and SHUT-IN DIRECTIVE
Failed Mechanical Integrity Test**

Dear Operator:

The following test(s) were performed on the listed dates on the following well(s) shown below in the test detail section.

The test(s) indicates that the well or wells failed to meet mechanical integrity standards of the New Mexico Oil Conservation Division. To comply with guidelines established by the U.S. Environmental Protection Agency, the well(s) must be shut-in immediately until it is successfully repaired. The test detail section which follows indicates preliminary findings and/or probable causes of the failure. This determination is based on a test of your well or facility by an inspector employed by the Oil Conservation Division. Additional testing during the repair operation may be necessary to properly identify the nature of the well failure.

Please notify the proper district office of the Division at least 48 hours prior to the date and time that the well(s) will be retested so the test may be witnessed by a field representative.

MECHANICAL INTEGRITY TEST DETAIL SECTION

SUN STATE No.001

30-005-20558-00-00
M-36-7S-30E

Active Salt Water Disposal Well

Test Date:	7/26/2018	Permitted Injection PSI:		Actual PSI:	
Test Reason:	Post Workover Test	Test Result:	F	Repair Due:	10/29/2018
Test Type:	Std. Annulus Pres. Test	FAIL TYPE:	Other Internal Failure	FAIL CAUSE:	
Comments on MIT:	POST WORKOVER TEST FAILED, RULE: 19.15.26.11, RAN 3 TESTS, 1ST -- 3 MIN 380 TO 260, 2ND -- 5 MIN 380 TO 300, 3RD -- 3 MIN 360 TO 270, PIC OF CHART IN WELL FILE.				

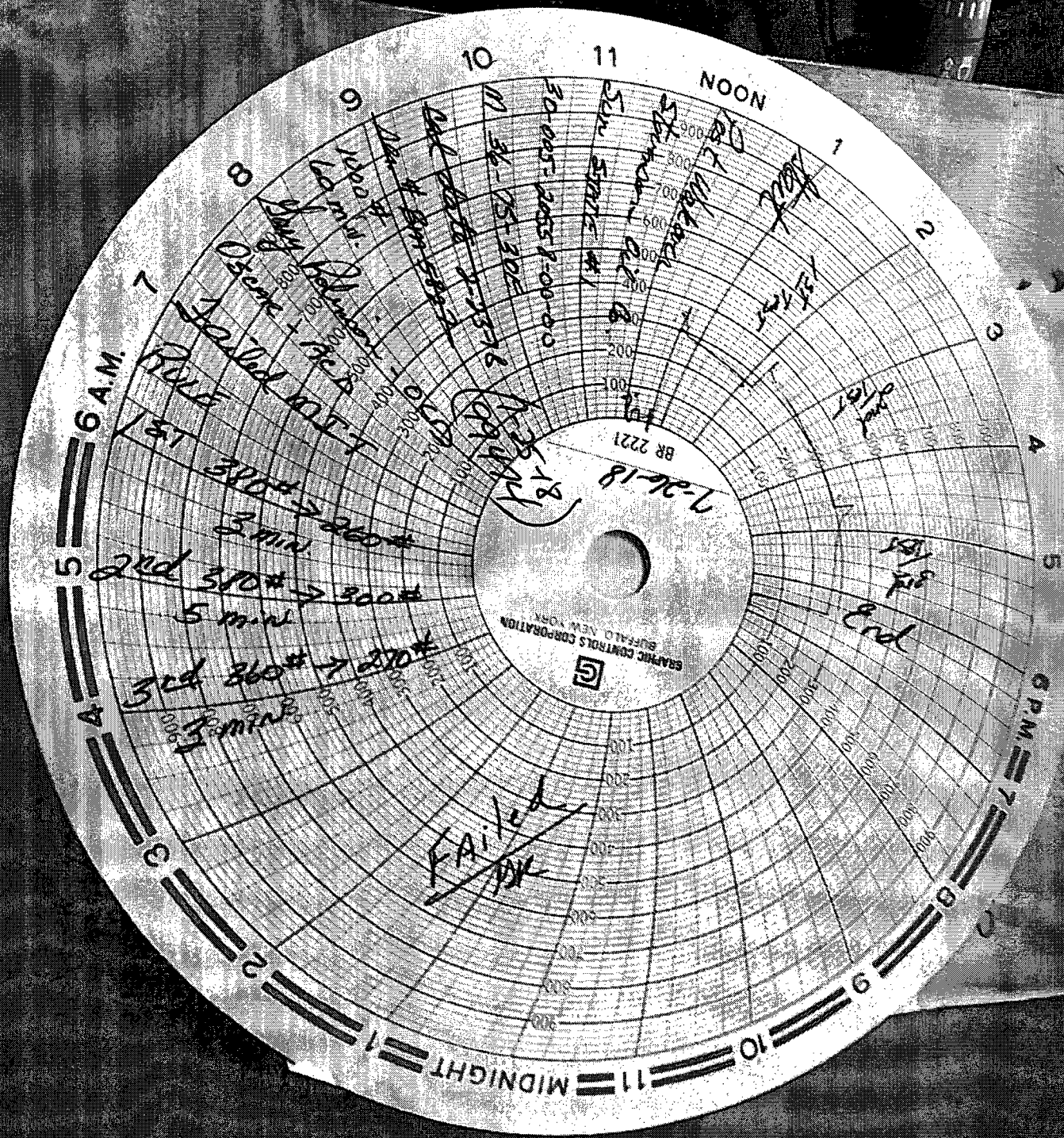
In the event that a satisfactory response is not received to this letter of direction by the "Repair Due:" date shown above, or if the well(s) are not immediately shut-in, further enforcement will occur. Such enforcement may include this office applying to the Division for an order summoning you to a hearing before a Division Examiner in Santa Fe to show cause why you should not be ordered to permanently plug and abandon this well.

Sincerely,



Hobbs OCD District Office

Note: Pressure Tests are performed prior to initial injection, after repairs and otherwise, every 5 years; Bradenhead Tests are performed annually. Information in Detail Section comes directly from field inspector data entries - not all blanks will contain data. "Failure Type" and "Failure Cause" and any Comments are not to be interpreted as a diagnosis of the condition of the wellbore. Additional testing should be conducted by the operator to accurately determine the nature of the actual failure. * Significant Non-Compliance events are reported directly to the EPA, Region VI, Dallas, Texas.



Handwritten notes on the graph include:

- 1st 300# → 260# 3 min
- 2nd 310# → 300# 5 min
- 3rd 260# → 270# 3 min
- 4th 260# → 270# 3 min
- 5th 260# → 270# 3 min
- 6th 260# → 270# 3 min
- 7th 260# → 270# 3 min
- 8th 260# → 270# 3 min
- 9th 260# → 270# 3 min
- 10th 260# → 270# 3 min
- 11th 260# → 270# 3 min
- 12th 260# → 270# 3 min

Handwritten notes on the right side of the graph include:

- 1st 300# → 260# 3 min
- 2nd 310# → 300# 5 min
- 3rd 260# → 270# 3 min
- 4th 260# → 270# 3 min
- 5th 260# → 270# 3 min
- 6th 260# → 270# 3 min
- 7th 260# → 270# 3 min
- 8th 260# → 270# 3 min
- 9th 260# → 270# 3 min
- 10th 260# → 270# 3 min
- 11th 260# → 270# 3 min
- 12th 260# → 270# 3 min