

HOBBS OCD

DISTRICT I

1625 N. French Dr., Hobbs, NM 88240

DISTRICT II

811 South First, Artesia, NM 88210

DISTRICT III

1000 Rio Brazos Rd., Aztec, NM 87410

DISTRICT IV

2040 South Panheco, Santa Fe, NM 87505

State of New Mexico

Energy, Minerals and Natural Resources Department

AUG 02 2018

Form C-102

Revised August 1, 2011

Submit one copy to Appropriate

District Office

OIL CONSERVATION DIVISION RECEIVED

1220 South St. Francis Dr.

Santa Fe, New Mexico 87505

☐ AMENDED REPORT

WELL LOCATION AND ACREAGE DEDICATION PLAT

API Number 30024-45030	Pool Code 98098	Pool Name Wolfbone
Property Code 322179	Property Name BRAHMAN STATE COM 15-10	Well Number 452H
GRID No. 162928	Operator Name ENERGEN RESOURCES CORPORATION	Elevation 3336'

Surface Location

UL or lot No.	Section	Township	Range	Lot Idn	Feet from the	North/South line	Feet from the	East/West line	County
N	15	24-S	35-E	N	508	SOUTH	1390	WEST	LEA

Bottom Hole Location If Different From Surface

UL or lot No.	Section	Township	Range	Lot Idn	Feet from the	North/South line	Feet from the	East/West line	County
D	10	24-S	35-E	D	100	NORTH	1150	WEST	LEA

Dedicated Acres	Joint or Infill	Consolidation Code	Order No.
320			

NO ALLOWABLE WILL BE ASSIGNED TO THIS COMPLETION UNTIL ALL INTERESTS HAVE BEEN CONSOLIDATED
OR A NON-STANDARD UNIT HAS BEEN APPROVED BY THE DIVISION

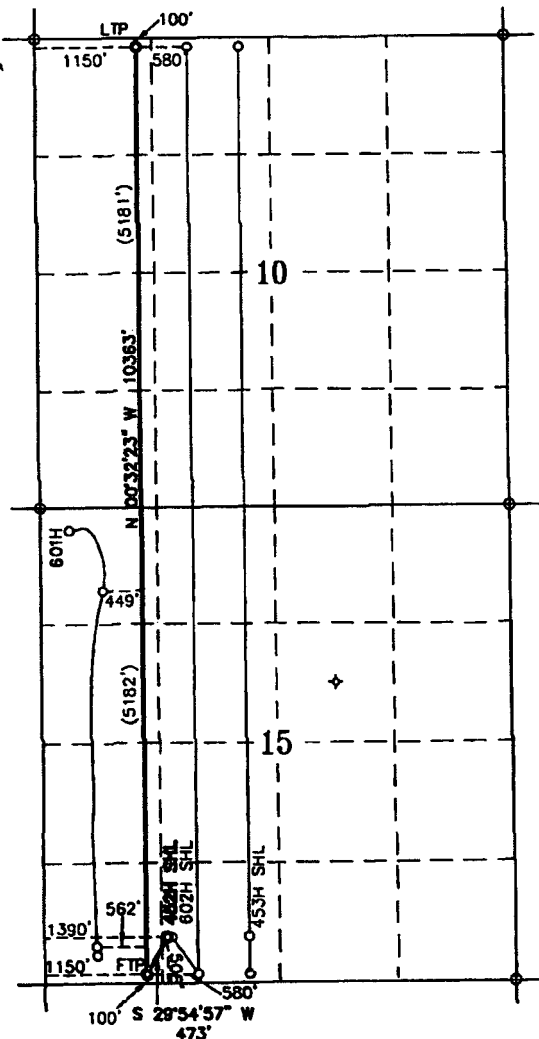
NOTES:

1. COORDINATES AND BEARINGS ARE BASED ON THE STATE PLANE COORDINATE SYSTEM NAD 83, CORRS 98, NEW MEXICO EAST ZONE WITH A CONVERGENCE ANGLE OF 0.5378259 AND DISTANCES ARE OF GRID VALUE WITH A CENTRAL COMBINED SCALE FACTOR OF 0.99985905. THE POSITIONAL TOLERANCE OF THIS SURVEY EXCEEDS THE REQUIREMENTS FOR A CONSTRUCTION SURVEY.
2. SCALE 1" = 2000'

LAST T/P & BHL: 100' FNL & 1150' FNL
NAD 27
N: 451994.2
E: 801022.2
LAT: 32.2390240
LON: 103.3602355
NAD 83
N: 452053.5
E: 842207.3
LAT: 32.2390240
LON: 103.3602355

1ST T/P: 100' FSL & 1150' FSL
NAD 27
N: 441632.2
E: 801119.4
LAT: 32.2105410
LON: 103.3602233
NAD 83
N: 441691.3
E: 842304.9
LAT: 32.2105410
LON: 103.3602233

SHL: 508' FSL & 1390' FSL
NAD 27
N: 442042.3
E: 801355.3
LAT: 32.2116622
LON: 103.3594486
NAD 83
N: 442101.4
E: 842540.9
LAT: 32.2116622
LON: 103.3594486



OPERATOR CERTIFICATION

I hereby certify that the information contained herein is true and complete to the best of my knowledge and belief, and that this organization either owns a working interest or unleased mineral interest in the land including the proposed bottom hole location or has a right to drill this well at this location pursuant to a contract with an owner of such a mineral or working interest, or to a voluntary pooling agreement or compulsory pooling order heretofore entered by the division.

Brenda F. Rathjen 7/11/2018
Signature Date

Brenda F. Rathjen

Printed Name

7/11/2018

Date

SURVEYOR CERTIFICATION

I hereby certify that the well location shown on this plat was plotted from field notes of actual surveys made by me or under my supervision, and that the same is true and correct to the best of my knowledge and belief.

APR 11 2018
Date Surveyed
Signature: *Wilson D. Watson Jr.* 08959
Professional Surveyor
BILSON D. WATSON, JR.
Signature Date: JULY 11, 2018

Certificate No. WILSON D. WATSON JR.
P.L.S. #3959
WATSON PROFESSIONAL GROUP INC