

DISTRICT I
1625 N. French Dr., Hobbs, NM 88240

DISTRICT II
811 South First, Artesia, NM 88210

DISTRICT III
1000 Rio Brazos Rd., Aztec, NM 87410

DISTRICT IV
2040 South Pacheco, Santa Fe, NM 87505

State of New Mexico
Energy, Minerals and Natural Resources Department

Form C-102
Revised August 1, 2011

Submit one copy to Appropriate
District Office

OIL CONSERVATION DIVISION

1220 South St. Francis Dr.
Santa Fe, New Mexico 87505

☐ AMENDED REPORT

WELL LOCATION AND ACREAGE DEDICATION PLAT

API Number 30-025-45032	Pool Code 98098	Pool Name Wolfbone
Property Code	Property Name BRAHMAN STATE COM 15-10	Well Number 602H
OCRID No. 162928	Operator Name ENERGEN RESOURCES CORPORATION	Elevation 3336'

Surface Location

UL or lot No.	Section	Township	Range	Lot Idn	Feet from the	North/South line	Feet from the	East/West line	County
N	15	24-S	35-E	N	508	SOUTH	1440	WEST	LEA

Bottom Hole Location If Different From Surface

UL or lot No.	Section	Township	Range	Lot Idn	Feet from the	North/South line	Feet from the	East/West line	County
C	10	24-S	35-E	C	100	NORTH	1730	WEST	LEA
Dedicated Acres 320	Joint or Infill	Consolidation Code	Order No.						

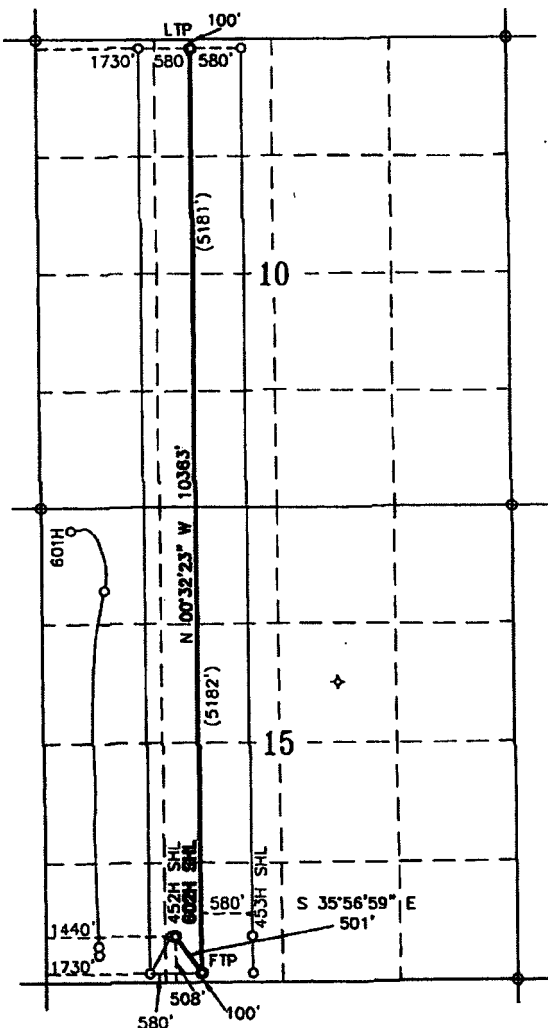
NO ALLOWABLE WILL BE ASSIGNED TO THIS COMPLETION UNTIL ALL INTERESTS HAVE BEEN CONSOLIDATED
OR A NON-STANDARD UNIT HAS BEEN APPROVED BY THE DIVISION

NOTES:
1. COORDINATES AND BEARINGS ARE BASED ON THE STATE PLANE COORDINATE SYSTEM NAD 83, CDRS 96, NEW MEXICO EAST ZONE WITH A CONVERGENCE ANGLE OF 0.53778259 AND DISTANCES ARE OF GRID VALUE WITH A CENTRAL COMBINED SCALE FACTOR OF 0.99985905. THE POSITIONAL TOLERANCE OF THIS SURVEY EXCEEDS THE REQUIREMENTS FOR A CONSTRUCTION SURVEY.
2. SCALE 1" = 2000'

LAST T/P & BHL: 100' FNL & 1730' FWL
NAD 27
N: 451999.0
E: 801602.2
LAT: 32.2390228
LON: 103.3583597
NAD 83
N: 452058.3
E: 842787.3
LAT: 32.2390228
LON: 103.3583597

1ST T/P: 100' FSL & 1730' FWL
NAD 27
N: 441637.2
E: 801699.3
LAT: 32.2105402
LON: 103.3583482
NAD 83
N: 441696.3
E: 842884.9
LAT: 32.2105402
LON: 103.3583482

SHL: 508' FSL & 1440' FWL
NAD 27
N: 442042.7
E: 801405.3
LAT: 32.2116620
LON: 103.3592869
NAD 83
N: 442101.7
E: 842590.9
LAT: 32.2116620
LON: 103.3592869



OPERATOR CERTIFICATION

I hereby certify that the information contained herein is true and complete to the best of my knowledge and belief, and that this organization either owns a working interest or unleased mineral interest in the land including the proposed bottom hole location or has a right to drill this well at this location pursuant to a contract with an owner of such a mineral or working interest, or to a voluntary pooling agreement or compulsory pooling order heretofore entered by the division.

Brenda F. Rathjen 7/11/2018
Signature Date

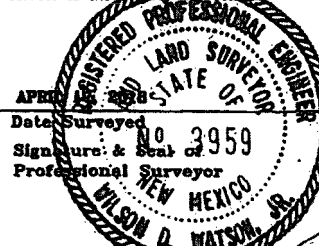
Brenda F. Rathjen

Printed Name 7/11/2018

Date

SURVEYOR CERTIFICATION

I hereby certify that the well location shown on this plat was plotted from field notes of actual surveys made by me or under my supervision, and that the same is true and correct to the best of my knowledge.



Wilson D. Watson, Jr. July 11, 2018
Signature Date

Certificate No. WILSON D. WATSON JR.
P.L.S. #3959
WATSON PROFESSIONAL GROUP INC