

UNITED STATES  
DEPARTMENT OF THE INTERIOR  
BUREAU OF LAND MANAGEMENT

HOBBS OGD

FORM APPROVED  
OMB No. 1004-0137  
Expires: July 31, 2010

## WELL COMPLETION OR RECOMPLETION REPORT AND LOG

5. Lease Serial No.  
NMNM0392082A

1a. Type of Well ☒ Oil Well ☐ Gas Well ☐ Dry ☐ Other  
b. Type of Completion ☒ New Well ☐ Work Over ☐ Deepen ☐ Plug Back ☐ Other

2. Name of Operator Contact: FATIMA VASQUEZ  
CIMAREX ENERGY COMPANY OF OK Mail: fvasquez@cimarex.com

3. Address 202 S CHEYENNE AVE. SUITE 1000  
TULSA, OK 74103

3a. Phone No. (include area code)  
Ph: 432-620-1933

4. Location of Well (Report location clearly and in accordance with Federal requirements)\*  
At surface SWSW 490FSL 398FWL 32.066250 N Lat, 103.704544 W Lon  
At top prod interval reported below SWSW 486FSL 622FWL 32.066235 N Lat, 103.703819 W Lon  
At total depth NWNW 330FNL 821FWL 32.078678 N Lat, 103.703232 W Lon

10. Field and Pool, or Exploratory  
WILDCAT; WOLFCAMP

11. Sec., T., R., M., or Block and Survey  
or Area Sec 5 T26S R32E Mer NMP

12. County or Parish  
LEA

13. State  
NM

14. Date Spudded  
12/02/2017

15. Date T.D. Reached  
01/12/2018

16. Date Completed  
☐ D & A ☒ Ready to Prod.  
04/03/2018

17. Elevations (DF, KB, RT, GL)\*  
3272 GL

18. Total Depth: MD 16579  
TVD 11895

19. Plug Back T.D.: MD 16564  
TVD 11895

20. Depth Bridge Plug Set: MD  
TVD

21. Type Electric & Other Mechanical Logs Run (Submit copy of each)  
CNL RBL

22. Was well cored? ☒ No ☐ Yes (Submit analysis)  
Was DST run? ☒ No ☐ Yes (Submit analysis)  
Directional Survey? ☐ No ☒ Yes (Submit analysis)

## 23. Casing and Liner Record (Report all strings set in well)

| Hole Size | Size/Grade    | Wt. (#/ft.) | Top (MD) | Bottom (MD) | Stage Cementer Depth | No. of Sk. & Type of Cement | Slurry Vol. (BBL) | Cement Top* | Amount Pulled |
|-----------|---------------|-------------|----------|-------------|----------------------|-----------------------------|-------------------|-------------|---------------|
| 14.750    | 10.750 J-55   | 45.5        | 0        | 1090        |                      | 870                         |                   | 0           | 0             |
| 6.750     | 5.500 HCP-110 | 23.0        | 0        | 11376       |                      | 620                         |                   | 7800        | 0             |
| 9.875     | 7.625 L-80    | 29.7        | 0        | 12049       |                      | 2340                        |                   | 0           | 0             |
| 6.750     | 5.000 HCP-110 | 18.0        | 11376    | 16579       |                      |                             |                   |             |               |

## 24. Tubing Record

| Size  | Depth Set (MD) | Packer Depth (MD) | Size | Depth Set (MD) | Packer Depth (MD) | Size | Depth Set (MD) | Packer Depth (MD) |
|-------|----------------|-------------------|------|----------------|-------------------|------|----------------|-------------------|
| 2.875 | 11376          | 11376             |      |                |                   |      |                |                   |

## 25. Producing Intervals

| Formation   | Top   | Bottom | Perforated Interval | Size  | No. Holes | Perf. Status |
|-------------|-------|--------|---------------------|-------|-----------|--------------|
| A) WOLFCAMP | 11695 |        | 12241 TO 16539      | 0.000 | 700       | OPEN         |
| B)          |       |        |                     |       |           |              |
| C)          |       |        |                     |       |           |              |
| D)          |       |        |                     |       |           |              |

## 26. Perforation Record

## 27. Acid, Fracture, Treatment, Cement Squeeze, Etc.

| Depth Interval | Amount and Type of Material                   |
|----------------|---|
| 12241 TO 16539 | 193.066 GALS OF TOTAL FLUID & 9.865.491# SAND |

## 28. Production - Interval A

| Date First Produced | Test Date         | Hours Tested | Test Production | Oil BBL | Gas MCF | Water BBL | Oil Gravity Corr. API | Gas Gravity | Production Method |
|---------------------|-------------------|--------------|-----------------|---------|---------|-----------|-----------------------|-------------|-------------------|
| 04/03/2018          | 04/23/2018        | 24           | →               | 775.0   | 1985.0  | 2326.0    | 49.4                  |             | GAS LIFT          |
| Choke Size          | Tbg. Press. Flwg. | Csg. Press.  | 24 Hr. Rate     | Oil BBL | Gas MCF | Water BBL | Gas:Oil Ratio         | Well Status |                   |
| 24                  | 2650              | 2200.0       | →               | 775     | 1985    | 2326      | 2561                  | POW         |                   |

## 28a. Production - Interval B

| Date First Produced | Test Date         | Hours Tested | Test Production | Oil BBL | Gas MCF | Water BBL | Oil Gravity Corr. API | Gas Gravity | Production Method |
|---------------------|-------------------|--------------|-----------------|---------|---------|-----------|-----------------------|-------------|-------------------|
|                     |                   |              | →               |         |         |           |                       |             |                   |
| Choke Size          | Tbg. Press. Flwg. | Csg. Press.  | 24 Hr. Rate     | Oil BBL | Gas MCF | Water BBL | Gas:Oil Ratio         | Well Status |                   |
|                     |                   |              | →               |         |         |           |                       |             |                   |

(See Instructions and spaces for additional data on reverse side)

ELECTRONIC SUBMISSION #420709 VERIFIED BY THE BLM WELL INFORMATION SYSTEM

\*\* BLM REVISED \*\* BLM REVISED \*\* BLM REVISED \*\* BLM REVISED \*\* BLM REVISED \*\*

Reclamation Due: 10/3/2018

ACCEPTED FOR RECORD

JUL 28 2018

BUREAU OF LAND MANAGEMENT  
CARLSBAD FIELD OFFICE

## 28b. Production - Interval C

| Date First Produced | Test Date            | Hours Tested | Test Production | Oil BBL | Gas MCF | Water BBL | Oil Gravity Corr. API | Gas Gravity | Production Method |
|---------------------|----------------------|--------------|-----------------|---------|---------|-----------|-----------------------|-------------|-------------------|
|                     |                      |              | →               |         |         |           |                       |             |                   |
| Choke Size          | Tbg. Press. Flwg. SI | Csg. Press.  | 24 Hr. Rate     | Oil BBL | Gas MCF | Water BBL | Gas:Oil Ratio         | Well Status |                   |
|                     |                      |              | →               |         |         |           |                       |             |                   |

## 28c. Production - Interval D

| Date First Produced | Test Date            | Hours Tested | Test Production | Oil BBL | Gas MCF | Water BBL | Oil Gravity Corr. API | Gas Gravity | Production Method |
|---------------------|----------------------|--------------|-----------------|---------|---------|-----------|-----------------------|-------------|-------------------|
|                     |                      |              | →               |         |         |           |                       |             |                   |
| Choke Size          | Tbg. Press. Flwg. SI | Csg. Press.  | 24 Hr. Rate     | Oil BBL | Gas MCF | Water BBL | Gas:Oil Ratio         | Well Status |                   |
|                     |                      |              | →               |         |         |           |                       |             |                   |

29. Disposition of Gas(Sold, used for fuel, vented, etc.)  
SOLD

## 30. Summary of Porous Zones (Include Aquifers):

Show all important zones of porosity and contents thereof: Cored intervals and all drill-stem tests, including depth interval tested, cushion used, time tool open, flowing and shut-in pressures and recoveries.

## 31. Formation (Log) Markers

| Formation     | Top   | Bottom | Descriptions, Contents, etc. | Name          | Top         |
|---------------|-------|--------|------------------------------|---------------|-------------|
|               |       |        |                              |               | Meas. Depth |
| BELL CANYON   | 4455  | 5411   | OIL, GAS                     | RUSTLER       | 1019        |
| CHERRY CANYON | 5411  | 6730   | OIL, GAS                     | TOP OF SALT   | 1345        |
| BRUSHY CANYON | 6730  | 8451   | OIL, GAS                     | BELL CANYON   | 4455        |
| BONE SPRING   | 8451  | 11695  | OIL, GAS                     | CHERRY CANYON | 5411        |
| WOLFCAMP      | 11695 |        | OIL, GAS                     | BRUSHY CANYON | 6730        |
|               |       |        |                              | BONE SPRING   | 8451        |
|               |       |        |                              | WOLFCAMP      | 11695       |

32. Additional remarks (include plugging procedure):

## 33. Circle enclosed attachments:

- |   |                    |               |                       |
|---|--------------------|---------------|-----------------------|
| 1. Electrical/Mechanical Logs (1 full set req'd.)     | 2. Geologic Report | 3. DST Report | 4. Directional Survey |
| 5. Sundry Notice for plugging and cement verification | 6. Core Analysis   | 7 Other:      |                       |

34. I hereby certify that the foregoing and attached information is complete and correct as determined from all available records (see attached instructions):

Electronic Submission #420709 Verified by the BLM Well Information System.  
For CIMAREX ENERGY COMPANY OF CO, sent to the Hobbs  
Committed to AFMSS for processing by DUNCAN WHITLOCK on 05/25/2018 (18DW0183SE)

Name (please print) FATIMA VASQUEZ

Title REGULATORY ANALYST

Signature (Electronic Submission)

Date 05/18/2018

Title 18 U.S.C. Section 1001 and Title 43 U.S.C. Section 1212, make it a crime for any person knowingly and willfully to make to any department or agency of the United States any false, fictitious or fraudulent statements or representations as to any matter within its jurisdiction.

**\*\* REVISED \*\* REVISED \*\* REVISED \*\* REVISED \*\* REVISED \*\* REVISED \*\* REVISED \*\* REVISED \*\***

District I  
1625 N. French Dr., Hobbs, NM 88240  
Phone: (575) 393-6161 Fax: (575) 393-0720  
District II  
811 S. First St., Artesia, NM 88210  
Phone: (575) 748-1283 Fax: (575) 748-9720  
District III  
1000 Rio Brazos Road, Aztec, NM 87410  
Phone: (505) 334-6178 Fax: (505) 334-6170  
District IV  
1220 S. St. Francis Dr., Santa Fe, NM 87505  
Phone: (505) 476-3460 Fax: (505) 476-3462

State of New Mexico  
Energy, Minerals & Natural Resources Department  
OIL CONSERVATION DIVISION  
1220 South St. Francis Dr.  
Santa Fe, NM 87505

**HOBBS OCD**  
**AUG 06 2018**  
**RECEIVED**

Form C-102  
Revised August 1, 2011  
Submit one copy to appropriate  
District Office

☐ AMENDED REPORT

WELL LOCATION AND ACREAGE DEDICATION PLAT

|   |  |  |
|---|--|--|
| <sup>1</sup> API Number<br>30-025-43886 | <sup>2</sup> Pool Code<br>98065                              | <sup>3</sup> Pool Name<br>WC-025 G-08 S203205N; Upper WC |
| <sup>4</sup> Property Code<br>38778     | <sup>5</sup> Property Name<br>HALLERTAU 5 FEDERAL            | <sup>6</sup> Well Number<br>11H                          |
| <sup>7</sup> OGRID No.<br>162683        | <sup>8</sup> Operator Name<br>CIMAREX ENERGY CO. OF COLORADO | <sup>9</sup> Elevation<br>3271.5'                        |

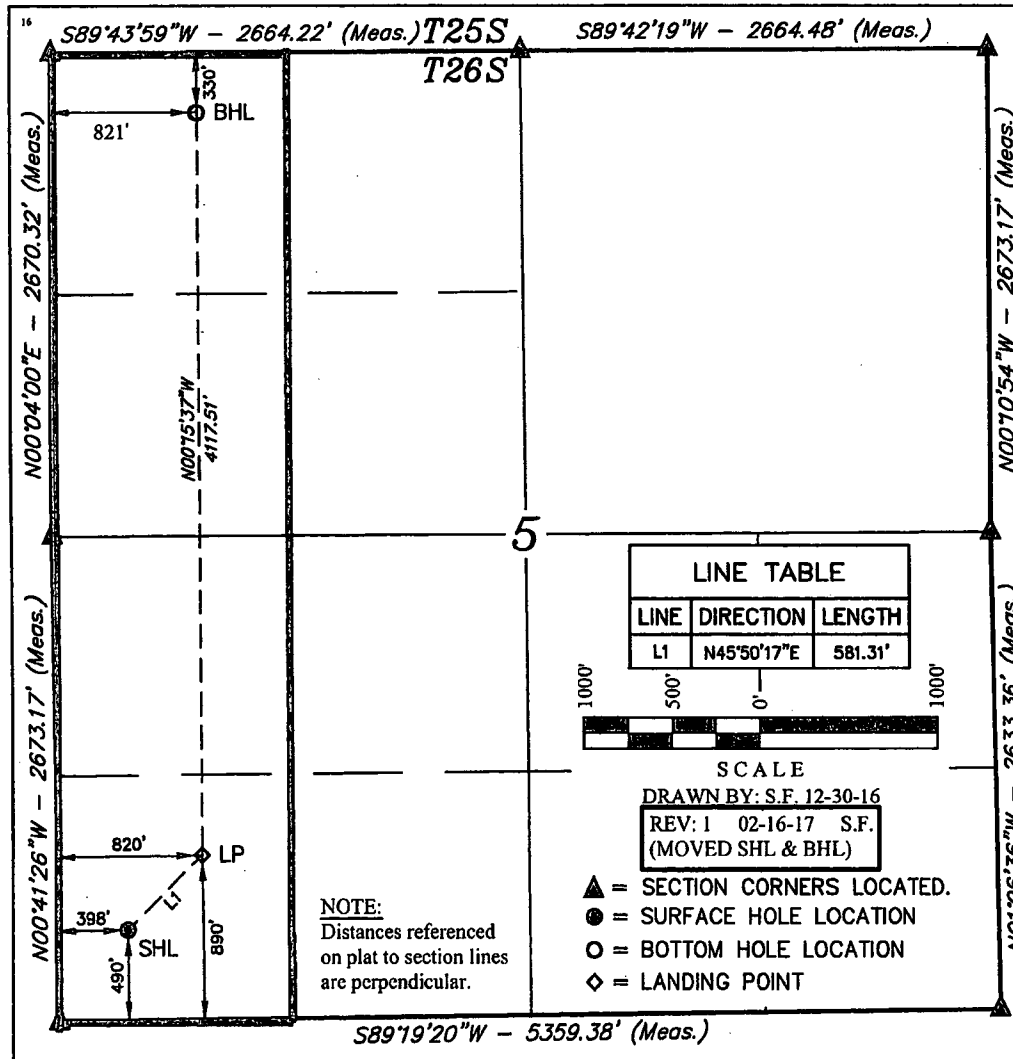
<sup>10</sup> Surface Location

| UL or lot no. | Section | Township | Range | Lot Idn | Feet from the | North/South line | Feet from the | East/West line | County |
|---------------|---------|----------|-------|---------|---------------|------------------|---------------|----------------|--------|
| M             | 5       | 26S      | 32E   |         | 490           | SOUTH            | 398           | WEST           | LEA    |

<sup>11</sup> Bottom Hole Location If Different From Surface

| UL or lot no.                        | Section                       | Township                         | Range                   | Lot Idn | Feet from the | North/South line | Feet from the | East/West line | County |
|--------------------------------------|-------------------------------|----------------------------------|-------------------------|---------|---------------|------------------|---------------|----------------|--------|
| D                                    | 5                             | 26S                              | 32E                     |         | 330           | NORTH            | 821'          | WEST           | LEA    |
| <sup>12</sup> Dedicated Acres<br>160 | <sup>13</sup> Joint or Infill | <sup>14</sup> Consolidation Code | <sup>15</sup> Order No. |         |               |                  |               |                |        |

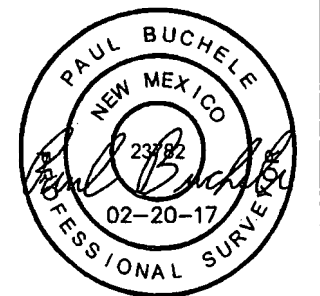
No allowable will be assigned to this completion until all interests have been consolidated or a non-standard unit has been approved by the division.



**"OPERATOR CERTIFICATION"**  
I hereby certify that the information contained herein is true and complete to the best of my knowledge and belief, and that this organization either owns a working interest or unleased mineral interest in the land including the proposed bottom hole location or has a right to drill this well at this location pursuant to a contract with an owner of such a mineral or working interest, or to a voluntary pooling agreement or a compulsory pooling order heretofore entered by the division.  
Signature: Patricia Holland Date: 4/16/18

Patricia Holland  
Printed Name  
pholland@cimarex.com  
E-mail Address

**"SURVEYOR CERTIFICATION"**  
I hereby certify that the well location shown on this plat was plotted from field notes of actual surveys made by me or under my supervision, and that the same is true and correct to the best of my belief.  
December 28, 2016  
Date of Survey  
Signature and Seal of Professional Surveyor:



Certificate Number: