

District I
1625 N. French Dr., Hobbs, NM 88240
Phone: (575) 393-6161 Fax: (575) 393-0720
District II
411 S. First St., Artesia, NM 88210
Phone: (575) 748-1283 Fax: (575) 748-9720
District III
1000 Rio Brazos Road, Aztec, NM 87410
Phone: (505) 334-6178 Fax: (505) 334-6170
District IV
1220 S. St. Francis Dr., Santa Fe, NM 87505
Phone: (505) 476-3460 Fax: (505) 476-3462

State of New Mexico
Energy, Minerals & Natural Resources Department
OIL CONSERVATION DIVISION
1220 South St. Francis Dr.
Santa Fe, NM 87505

Form C-102
Revised August 1, 2011
Submit one copy to appropriate
District Office

☐ AMENDED REPORT

WELL LOCATION AND ACREAGE DEDICATION PLAT

¹ API Number 30-025-45076	² Pool Code 28430 25434	³ Pool Name Grama Ridge, Bone Spring, NORTH
⁴ Property Code 72041	⁵ Property Name ASADERO 3 STATE COM	⁶ Well Number 502H
⁷ OGRID No. 372165	⁸ Operator Name CENTENNIAL RESOURCE PRODUCTION, LLC	⁹ Elevation 3690.7'

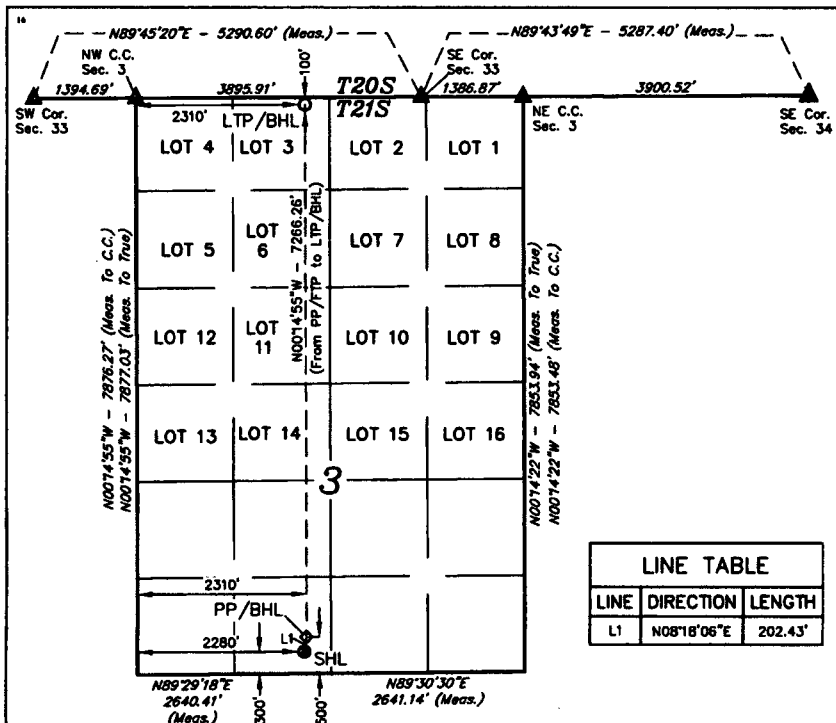
"Surface Location

UL or lot no.	Section	Township	Range	Lot Idn	Feet from the	North/South line	Feet from the	East/West line	County
N	3	21S	34E		300	SOUTH	2280	WEST	LEA

"Bottom Hole Location If Different From Surface

UL or lot no.	Section	Township	Range	Lot Idn	Feet from the	North/South line	Feet from the	East/West line	County
3	3	21S	34E		100	NORTH	2310	WEST	LEA
¹² Dedicated Acres 238.35		¹³ Joint or Infill		¹⁴ Consolidation Code		¹⁵ Order No.			

No allowable will be assigned to this completion until all interests have been consolidated or a non-standard unit has been approved by the division.



NOTE:

- Distances referenced on plat to section lines are perpendicular.
- Basis of Bearing is a Transverse Mercator Projection with a Central Meridian of W103°53'00"



SCALE

DRAWN BY: C.D. 07-06-18

- = SURFACE HOLE LOCATION
- = PP/FTP
- ◇ = LTP/BHL
- ▲ = SECTION CORNER LOCATED

"OPERATOR
CERTIFICATION

I hereby certify that the information contained herein is true and complete to the best of my knowledge and belief, and that this organization either owns a working interest or unleased mineral interest in the land including the proposed bottom hole location or has a right to drill this well at this location pursuant to a contract with an owner of such a mineral or working interest, or to a voluntary pooling agreement or a compulsory pooling order hereinafter entered by the division.

Signature: *Sarah Ferreyros* Date: 08/09/2018

Printed Name: Sarah Ferreyros

E-mail Address: Sarah.Ferreyros@cdevinc.com

"SURVEYOR
CERTIFICATION

I hereby certify that the well location shown on this plat was plotted from field notes of actual surveys made by me or under my supervision, and that the same is true and correct to the best of my belief.

Date of Survey: June 27, 2018

Signature and Seal of Professional Surveyor:



Certificate Number:

NAD 83 (SURFACE HOLE LOCATION)
LATITUDE = 32°30'05.58" (32.501551°)
LONGITUDE = 103°27'32.21" (103.458947°)
STATE PLANE NAD 83 (N.M. EAST)
Y: 547300.35' X: 810905.47'
UTM, NAD 83 (ZONE 13)
Y: 11801411.20' X: 2115383.56'

NAD 83 (PP/FTP)
LATITUDE = 32°30'07.56" (32.502101°)
LONGITUDE = 103°27'31.86" (103.458850°)
STATE PLANE NAD 83 (N.M. EAST)
Y: 547500.75' X: 810933.85'
UTM, NAD 83 (ZONE 13)
Y: 11801611.75' X: 2115410.68'

NAD 83 (LTP/BHL)
LATITUDE = 32°31'19.45" (32.522070°)
LONGITUDE = 103°27'31.89" (103.458858°)
STATE PLANE NAD 83 (N.M. EAST)
Y: 554765.58' X: 810871.64'
UTM, NAD 83 (ZONE 13)
Y: 11808875.08' X: 2115303.04'