

**PECOS DISTRICT
DRILLING CONDITIONS OF APPROVAL**

HOBBS OCD

AUG 02 2018

RECEIVED

| | |
|------------------------------|-------------------------------------|
| OPERATOR'S NAME: | MEWBOURNE OIL COMPANY |
| LEASE NO.: | NMNM094095 |
| WELL NAME & NO.: | CAPER 20/29 B2B0 FED COM 1H |
| SURFACE HOLE FOOTAGE: | 900'/S & 2300'/E |
| BOTTOM HOLE FOOTAGE: | 330'/S & 1800'/E |
| LOCATION: | SECTION 17, T21S, R32E, NMPM |
| COUNTY: | LEA, NEW MEXICO |

COA

| | | | |
|----------------------|--|--|--|
| H2S | <input checked="" type="radio"/> Yes | <input type="radio"/> No | |
| Potash | <input type="radio"/> None | <input type="radio"/> Secretary | <input checked="" type="radio"/> R-111-P |
| Cave/Karst Potential | <input checked="" type="radio"/> Low | <input type="radio"/> Medium | <input type="radio"/> High |
| Variance | <input type="radio"/> None | <input checked="" type="radio"/> Flex Hose | <input type="radio"/> Other |
| Wellhead | <input type="radio"/> Conventional | <input checked="" type="radio"/> Multibowl | <input type="radio"/> Both |
| Other | <input type="checkbox"/> 4 String Area | <input type="checkbox"/> Capitan Reef | <input type="checkbox"/> WIPP |

A. Hydrogen Sulfide

A Hydrogen Sulfide (H2S) Drilling Plan shall be activated 500 feet prior to drilling into the **Delaware** formation. As a result, the Hydrogen Sulfide area must meet Onshore Order 6 requirements, which includes equipment and personnel/public protection items. If Hydrogen Sulfide is encountered, please provide measured values and formations to the BLM.

B. CASING

1. The 13-3/8 inch surface casing shall be set at approximately **1040** feet (a minimum of 25 feet into the Rustler Anhydrite and above the salt) and cemented to the surface.
 - a. If cement does not circulate to the surface, the appropriate BLM office shall be notified and a temperature survey utilizing an electronic type temperature survey with surface log readout will be used or a cement bond log shall be run to verify the top of the cement. Temperature survey will be run a minimum of six hours after pumping cement and ideally between 8-10 hours after completing the cement job.
 - b. Wait on cement (WOC) time for a primary cement job will be a minimum of **24 hours in the Potash Area** or 500 pounds compressive strength, whichever is greater. (This is to include the lead cement).
 - c. Wait on cement (WOC) time for a remedial job will be a minimum of 4 hours after bringing cement to surface or 500 pounds compressive strength, whichever is greater.

- d. If cement falls back, remedial cementing will be done prior to drilling out that string.
2. The minimum required fill of cement behind the 9-5/8 inch intermediate casing is:
 - Cement to surface. If cement does not circulate see B.1.a, c-d above. **Additional cement maybe required. Excess calculates to 24%.**Wait on cement (WOC) time for a primary cement job is to include the lead cement slurry due to cave/karst or potash.

3. The minimum required fill of cement behind the 7-5/8 inch production casing is:

Operator has proposed a DV tool, the depth may be adjusted as long as the cement is changed proportionally. The DV tool may be cancelled if cement circulates to surface on the first stage.

- a. First stage to DV tool: Cement to circulate. If cement does not circulate off the DV tool, contact the appropriate BLM office before proceeding with second stage cement job. **Additional cement maybe required. Excess calculates to 20%.**
- b. Second stage above DV tool: Cement to surface. If cement does not circulate, contact the appropriate BLM office.
4. The minimum required fill of cement behind the 4-1/2 inch production liner is: Cement should tie-back 100' into the previous casing. Operator shall provide method of verification.

C. PRESSURE CONTROL

1. Variance approved to use flex line from BOP to choke manifold. Manufacturer's specification to be readily available. No external damage to flex line. Flex line to be installed as straight as possible (no hard bends).
2. Minimum working pressure of the blowout preventer (BOP) and related equipment (BOPE) required for drilling below the surface casing shoe shall be **5000 (5M) psi**.

GENERAL REQUIREMENTS

The BLM is to be notified in advance for a representative to witness:

- a. Spudding well (minimum of 24 hours)
- b. Setting and/or Cementing of all casing strings (minimum of 4 hours)
- c. BOPE tests (minimum of 4 hours)

☒ Chaves and Roosevelt Counties
Call the Roswell Field Office, 2909 West Second St., Roswell NM 88201.
During office hours call (575) 627-0272.
After office hours call (575)

☒ Eddy County
Call the Carlsbad Field Office, 620 East Greene St., Carlsbad, NM 88220,
(575) 361-2822

☒ Lea County
Call the Hobbs Field Station, 414 West Taylor, Hobbs NM 88240, (575)
393-3612

1. Unless the production casing has been run and cemented or the well has been properly plugged, the drilling rig shall not be removed from over the hole without prior approval.
 - a. In the event the operator has proposed to drill multiple wells utilizing a skid/walking rig. Operator shall secure the wellbore on the current well, after installing and testing the wellhead, by installing a blind flange of like pressure rating to the wellhead and a pressure gauge that can be monitored while drilling is performed on the other well(s).
 - b. When the operator proposes to set surface casing with Spudder Rig
 - Notify the BLM when moving in and removing the Spudder Rig.
 - Notify the BLM when moving in the 2nd Rig. Rig to be moved in within 90 days of notification that Spudder Rig has left the location.
 - BOP/BOPE test to be conducted per Onshore Oil and Gas Order No. 2 as soon as 2nd Rig is rigged up on well.
2. Floor controls are required for 3M or Greater systems. These controls will be on the rig floor, unobstructed, readily accessible to the driller and will be operational at all times during drilling and/or completion activities. Rig floor is defined as the area immediately around the rotary table; the area immediately above the substructure on which the draw works are located, this does not include the dog house or stairway area.
3. The record of the drilling rate along with the GR/N well log run from TD to surface (horizontal well – vertical portion of hole) shall be submitted to the BLM office as

well as all other logs run on the borehole 30 days from completion. If available, a digital copy of the logs is to be submitted in addition to the paper copies. The Rustler top and top and bottom of Salt are to be recorded on the Completion Report.

A. CASING

1. Changes to the approved APD casing program need prior approval if the items substituted are of lesser grade or different casing size or are Non-API. The Operator can exchange the components of the proposal with that of superior strength (i.e. changing from J-55 to N-80, or from 36# to 40#). Changes to the approved cement program need prior approval if the altered cement plan has less volume or strength or if the changes are substantial (i.e. Multistage tool, ECP, etc.). The initial wellhead installed on the well will remain on the well with spools used as needed.
2. Wait on cement (WOC) for Potash Areas: After cementing but before commencing any tests, the casing string shall stand cemented under pressure until both of the following conditions have been met: 1) cement reaches a minimum compressive strength of 500 psi for all cement blends, 2) until cement has been in place at least 24 hours. WOC time will be recorded in the driller's log. The casing integrity test can be done (prior to the cement setting up) immediately after bumping the plug.
3. Wait on cement (WOC) for Water Basin: After cementing but before commencing any tests, the casing string shall stand cemented under pressure until both of the following conditions have been met: 1) cement reaches a minimum compressive strength of 500 psi at the shoe, 2) until cement has been in place at least 8 hours. WOC time will be recorded in the driller's log. See individual casing strings for details regarding lead cement slurry requirements. The casing integrity test can be done (prior to the cement setting up) immediately after bumping the plug.
4. Provide compressive strengths including hours to reach required 500 pounds compressive strength prior to cementing each casing string. Have well specific cement details onsite prior to pumping the cement for each casing string.
5. No pea gravel permitted for remedial or fall back remedial without prior authorization from the BLM engineer.
6. On that portion of any well approved for a 5M BOPE system or greater, a pressure integrity test of each casing shoe shall be performed. Formation at the shoe shall be tested to a minimum of the mud weight equivalent anticipated to control the formation pressure to the next casing depth or at total depth of the well. This test shall be performed before drilling more than 20 feet of new hole.
7. If hardband drill pipe is rotated inside casing, returns will be monitored for metal. If metal is found in samples, drill pipe will be pulled and rubber protectors which have a

larger diameter than the tool joints of the drill pipe will be installed prior to continuing drilling operations.

8. Whenever a casing string is cemented in the R-111-P potash area, the NMOCD requirements shall be followed.

B. PRESSURE CONTROL

1. All blowout preventer (BOP) and related equipment (BOPE) shall comply with well control requirements as described in Onshore Oil and Gas Order No. 2 and API RP 53 Sec. 17.
2. If a variance is approved for a flexible hose to be installed from the BOP to the choke manifold, the following requirements apply: The flex line must meet the requirements of API 16C. Check condition of flexible line from BOP to choke manifold, replace if exterior is damaged or if line fails test. Line to be as straight as possible with no hard bends and is to be anchored according to Manufacturer's requirements. The flexible hose can be exchanged with a hose of equal size and equal or greater pressure rating. Anchor requirements, specification sheet and hydrostatic pressure test certification matching the hose in service, to be onsite for review. These documents shall be posted in the company man's trailer and on the rig floor.
3. 5M or higher system requires an HCR valve, remote kill line and annular to match. The remote kill line is to be installed prior to testing the system and tested to stack pressure.
4. If the operator has proposed a multi-bowl wellhead assembly in the APD. The following requirements must be met:
 - a. Wellhead shall be installed by manufacturer's representatives, submit documentation with subsequent sundry.
 - b. If the welding is performed by a third party, the manufacturer's representative shall monitor the temperature to verify that it does not exceed the maximum temperature of the seal.
 - c. Manufacturer representative shall install the test plug for the initial BOP test.
 - d. If the cement does not circulate and one inch operations would have been possible with a standard wellhead, the well head shall be cut off, cementing operations performed and another wellhead installed.
 - e. Whenever any seal subject to test pressure is broken, all the tests in OOGO2.III.A.2.i must be followed.
5. The appropriate BLM office shall be notified a minimum of 4 hours in advance for a representative to witness the tests.

- a. In a water basin, for all casing strings utilizing slips, these are to be set as soon as the crew and rig are ready and any fallback cement remediation has been done. The casing cut-off and BOP installation can be initiated four hours after installing the slips, which will be approximately six hours after bumping the plug. For those casing strings not using slips, the minimum wait time before cut-off is eight hours after bumping the plug. BOP/BOPE testing can begin after cut-off or once cement reaches 500 psi compressive strength (including lead when specified), whichever is greater. However, if the float does not hold, cut-off cannot be initiated until cement reaches 500 psi compressive strength (including lead when specified).
- b. In potash areas, for all casing strings utilizing slips, these are to be set as soon as the crew and rig are ready and any fallback cement remediation has been done. For all casing strings, casing cut-off and BOP installation can be initiated at twelve hours after bumping the plug. However, **no tests** shall commence until the cement has had a minimum of 24 hours setup time, except the casing pressure test can be initiated immediately after bumping the plug (only applies to single stage cement jobs).
- c. The tests shall be done by an independent service company utilizing a test plug. The results of the test shall be reported to the appropriate BLM office.
- d. The test shall be run on a 5000 psi chart for a 2-3M BOP/BOP, on a 10000 psi chart for a 5M BOP/BOPE and on a 15000 psi chart for a 10M BOP/BOPE. If a linear chart is used, it shall be a one hour chart. A circular chart shall have a maximum 2 hour clock. If a twelve hour or twenty-four hour chart is used, tester shall make a notation that it is run with a two hour clock.
- e. All tests are required to be recorded on a calibrated test chart. A copy of the BOP/BOPE test chart and a copy of independent service company test will be submitted to the appropriate BLM office.
- f. The BOP/BOPE test shall include a low pressure test from 250 to 300 psi. The test will be held for a minimum of 10 minutes. This test shall be performed prior to the test at full stack pressure.
- g. BOP/BOPE must be tested by an independent service company within 500 feet of the top of the Wolfcamp formation if the time between the setting of the intermediate casing and reaching this depth exceeds 20 days. This test does not exclude the test prior to drilling out the casing shoe as per Onshore Order No. 2.

C. DRILLING MUD

Mud system monitoring equipment, with derrick floor indicators and visual and audio alarms, shall be operating before drilling into the Wolfcamp formation, and shall be used until production casing is run and cemented.

D. WASTE MATERIAL AND FLUIDS

All waste (i.e. drilling fluids, trash, salts, chemicals, sewage, gray water, etc.) created as a result of drilling operations and completion operations shall be safely contained and disposed of properly at a waste disposal facility. No waste material or fluid shall be disposed of on the well location or surrounding area.

Porto-johns and trash containers will be on-location during fracturing operations or any other crew-intensive operations.

Waste Minimization Plan (WMP)

In the interest of resource development, submission of additional well gas capture development plan information is deferred but may be required by the BLM Authorized Officer at a later date.

ZS 041718

**PECOS DISTRICT
SURFACE USE
CONDITIONS OF APPROVAL**

| | |
|-----------------------|------------------------------|
| OPERATOR'S NAME: | MEWBOURNE OIL COMPANY |
| LEASE NO.: | NMNM094095 |
| WELL NAME & NO.: | CAPER 20/29 B2B0 FED COM 1H |
| SURFACE HOLE FOOTAGE: | 900'/S & 2300'/E |
| BOTTOM HOLE FOOTAGE: | 330'/S & 1800'/E |
| LOCATION: | SECTION 17, T21S, R32E, NMPM |
| COUNTY: | LEA |

TABLE OF CONTENTS

Standard Conditions of Approval (COA) apply to this APD. If any deviations to these standards exist or special COAs are required, the section with the deviation or requirement will be checked below.

- ☐ **General Provisions**
- ☐ **Permit Expiration**
- ☐ **Archaeology, Paleontology, and Historical Sites**
- ☐ **Noxious Weeds**
- ☐ **Special Requirements**
 - Watershed
 - Lesser Prairie-Chicken Timing Stipulations
 - Ground-level Abandoned Well Marker
- ☐ **Construction**
 - Notification
 - Topsoil
 - Closed Loop System
 - Federal Mineral Material Pits
 - Well Pads
 - Roads
- ☐ **Road Section Diagram**
- ☐ **Production (Post Drilling)**
 - Well Structures & Facilities
- ☐ **Interim Reclamation**
- ☐ **Final Abandonment & Reclamation**

I. GENERAL PROVISIONS

The approval of the Application For Permit To Drill (APD) is in compliance with all applicable laws and regulations: 43 Code of Federal Regulations 3160, the lease terms, Onshore Oil and Gas Orders, Notices To Lessees, New Mexico Oil Conservation Division (NMOCD) Rules, National Historical Preservation Act As Amended, and instructions and orders of the Authorized Officer. Any request for a variance shall be submitted to the Authorized Officer on Form 3160-5, Sundry Notices and Report on Wells.

II. PERMIT EXPIRATION

If the permit terminates prior to drilling and drilling cannot be commenced within 60 days after expiration, an operator is required to submit Form 3160-5, Sundry Notices and Reports on Wells, requesting surface reclamation requirements for any surface disturbance. However, if the operator will be able to initiate drilling within 60 days after the expiration of the permit, the operator must have set the conductor pipe in order to allow for an extension of 60 days beyond the expiration date of the APD. (Filing of a Sundry Notice is required for this 60 day extension.)

III. ARCHAEOLOGICAL, PALEONTOLOGY & HISTORICAL SITES

Any cultural and/or paleontological resource discovered by the operator or by any person working on the operator's behalf shall immediately report such findings to the Authorized Officer. The operator is fully accountable for the actions of their contractors and subcontractors. The operator shall suspend all operations in the immediate area of such discovery until written authorization to proceed is issued by the Authorized Officer. An evaluation of the discovery shall be made by the Authorized Officer to determine the appropriate actions that shall be required to prevent the loss of significant cultural or scientific values of the discovery. The operator shall be held responsible for the cost of the proper mitigation measures that the Authorized Officer assesses after consultation with the operator on the evaluation and decisions of the discovery. Any unauthorized collection or disturbance of cultural or paleontological resources may result in a shutdown order by the Authorized Officer.

IV. NOXIOUS WEEDS

The operator shall be held responsible if noxious weeds become established within the areas of operations. Weed control shall be required on the disturbed land where noxious weeds exist, which includes the roads, pads, associated pipeline corridor, and adjacent land affected by the establishment of weeds due to this action. The operator shall consult with the Authorized Officer for

acceptable weed control methods, which include following EPA and BLM requirements and policies.

V. SPECIAL REQUIREMENT(S)

Watershed

The entire well pad will be bermed to prevent oil, salt, and other chemical contaminants from leaving the well pad. Topsoil shall not be used to construct the berm. No water flow from the uphill side(s) of the pad shall be allowed to enter the well pad. The berm shall be maintained through the life of the well and after interim reclamation has been completed. Any water erosion that may occur due to the construction of the well pad during the life of the well will be quickly corrected and proper measures will be taken to prevent future erosion. Stockpiling of topsoil is required. The top soil shall be stockpiled in an appropriate location to prevent loss of soil due to water or wind erosion and not used for berming or erosion control.

Tank battery locations will be lined and bermed. A 20 mil permanent liner will be installed with a 4 oz. felt backing to prevent tears or punctures. Tank battery berms must be large enough to contain 1 ½ times the content of the largest tank or 24 hour production, whichever is greater. Automatic shut off, check valves, or similar systems will be installed for tanks to minimize the effects of catastrophic line failures used in production or drilling.

Timing Limitation Stipulation / Condition of Approval for lesser prairie-chicken:

Oil and gas activities including 3-D geophysical exploration, and drilling will not be allowed in lesser prairie-chicken habitat during the period from March 1st through June 15th annually. During that period, other activities that produce noise or involve human activity, such as the maintenance of oil and gas facilities, pipeline, road, and well pad construction, will be allowed except between 3:00 am and 9:00 am. The 3:00 am to 9:00 am restriction will not apply to normal, around-the-clock operations, such as venting, flaring, or pumping, which do not require a human presence during this period. Additionally, no new drilling will be allowed within up to 200 meters of leks known at the time of permitting. Normal vehicle use on existing roads will not be restricted. Exhaust noise from pump jack engines must be muffled or otherwise controlled so as not to exceed 75 db measured at 30 feet from the source of the noise.

Ground-level Abandoned Well Marker to avoid raptor perching: Upon the plugging and subsequent abandonment of the well, the well marker will be installed at ground level on a plate containing the pertinent information for the plugged well. For more installation details, contact the Carlsbad Field Office at 575-234-5972.

This authorization is subject to your Certificate of Participation and/or Certificate of Inclusion under the New Mexico Candidate Conservation Agreement. Because it involves surface disturbing activities covered under your Certificate,

your Habitat Conservation Fund Account with the Center of Excellence for Hazardous Materials Management (CEHMM) will be debited according to Exhibit B Part 2 of the Certificate of Participation.

VI. CONSTRUCTION

A. NOTIFICATION

The BLM shall administer compliance and monitor construction of the access road and well pad. Notify the at least 3 working days prior to commencing construction of the access road and/or well pad.

When construction operations are being conducted on this well, the operator shall have the approved APD and Conditions of Approval (COA) on the well site and they shall be made available upon request by the Authorized Officer.

B. TOPSOIL

The operator shall strip the top portion of the soil (root zone) from the entire well pad area and stockpile the topsoil along the edge of the well pad as depicted in the APD. The root zone is typically six (6) inches in depth. All the stockpiled topsoil will be redistributed over the interim reclamation areas. Topsoil shall not be used for berming the pad or facilities. For final reclamation, the topsoil shall be spread over the entire pad area for seeding preparation.

Other subsoil (below six inches) stockpiles must be completely segregated from the topsoil stockpile. Large rocks or subsoil clods (not evident in the surrounding terrain) must be buried within the approved area for interim and final reclamation.

C. CLOSED LOOP SYSTEM

Tanks are required for drilling operations: No Pits.

The operator shall properly dispose of drilling contents at an authorized disposal site.

D. FEDERAL MINERAL MATERIALS PIT

Payment shall be made to the BLM prior to removal of any federal mineral materials. Call the .

E. WELL PAD SURFACING

Surfacing of the well pad is not required.

If the operator elects to surface the well pad, the surfacing material may be required to be removed at the time of reclamation. The well pad shall be constructed in a manner which creates the smallest possible surface disturbance, consistent with safety and operational needs.

F. EXCLOSURE FENCING (CELLARS & PITS)

Exclosure Fencing

The operator will install and maintain exclosure fencing for all open well cellars to prevent access to public, livestock, and large forms of wildlife before and after drilling operations until the pit is free of fluids and the operator initiates backfilling. (For examples of exclosure fencing design, refer to BLM's Oil and Gas Gold Book, Exclosure Fence Illustrations, Figure 1, Page 18.)

G. ON LEASE ACCESS ROADS**Road Width**

The access road shall have a driving surface that creates the smallest possible surface disturbance and does not exceed fourteen (14) feet in width. The maximum width of surface disturbance, when constructing the access road, shall not exceed twenty-five (25) feet.

Surfacing

Surfacing material is not required on the new access road driving surface. If the operator elects to surface the new access road or pad, the surfacing material may be required to be removed at the time of reclamation.

Where possible, no improvements should be made on the unsurfaced access road other than to remove vegetation as necessary, road irregularities, safety issues, or to fill low areas that may sustain standing water.

The Authorized Officer reserves the right to require surfacing of any portion of the access road at any time deemed necessary. Surfacing may be required in the event the road deteriorates, erodes, road traffic increases, or it is determined to be beneficial for future field development. The surfacing depth and type of material will be determined at the time of notification.

Crowning

Crowning shall be done on the access road driving surface. The road crown shall have a grade of approximately 2% (i.e., a 1" crown on a 14' wide road). The road shall conform to Figure 1; cross section and plans for typical road construction.

Ditching

Ditching shall be required on both sides of the road.

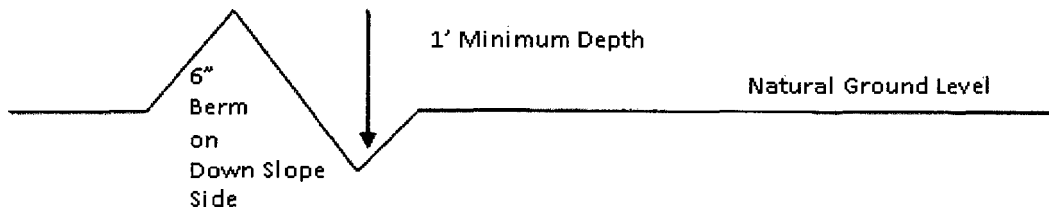
Turnouts

Vehicle turnouts shall be constructed on the road. Turnouts shall be intervisible with interval spacing distance less than 1000 feet. Turnouts shall conform to Figure 1; cross section and plans for typical road construction.

Drainage

Drainage control systems shall be constructed on the entire length of road (e.g. ditches, sidehill outslowing and insloping, leadoff ditches, culvert installation, and low water crossings).

A typical lead-off ditch has a minimum depth of 1 foot below and a berm of 6 inches above natural ground level. The berm shall be on the down-slope side of the lead-off ditch.



All lead-off ditches shall be graded to drain water with a 1 percent minimum to 3 percent maximum ditch slope. The spacing interval are variable for lead-off ditches and shall be determined according to the formula for spacing intervals of lead-off ditches, but may be amended depending upon existing soil types and centerline road slope (in %);

Cattle guards

An appropriately sized cattle guard sufficient to carry out the project shall be installed and maintained at fence/road crossings. Any existing cattle guards on the access road route shall be repaired or replaced if they are damaged or have deteriorated beyond practical use. The operator shall be responsible for the condition of the existing cattle guards that are in place and are utilized during lease operations.

Fence Requirement

Where entry is granted across a fence line, the fence shall be braced and tied off on both sides of the passageway prior to cutting. The operator shall notify the private surface landowner or the grazing allotment holder prior to crossing any fences.

Public Access

Public access on this road shall not be restricted by the operator without specific written approval granted by the Authorized Officer.

Construction Steps

1. Salvage topsoil
2. Construct road

3. Redistribute topsoil
4. Revegetate slopes

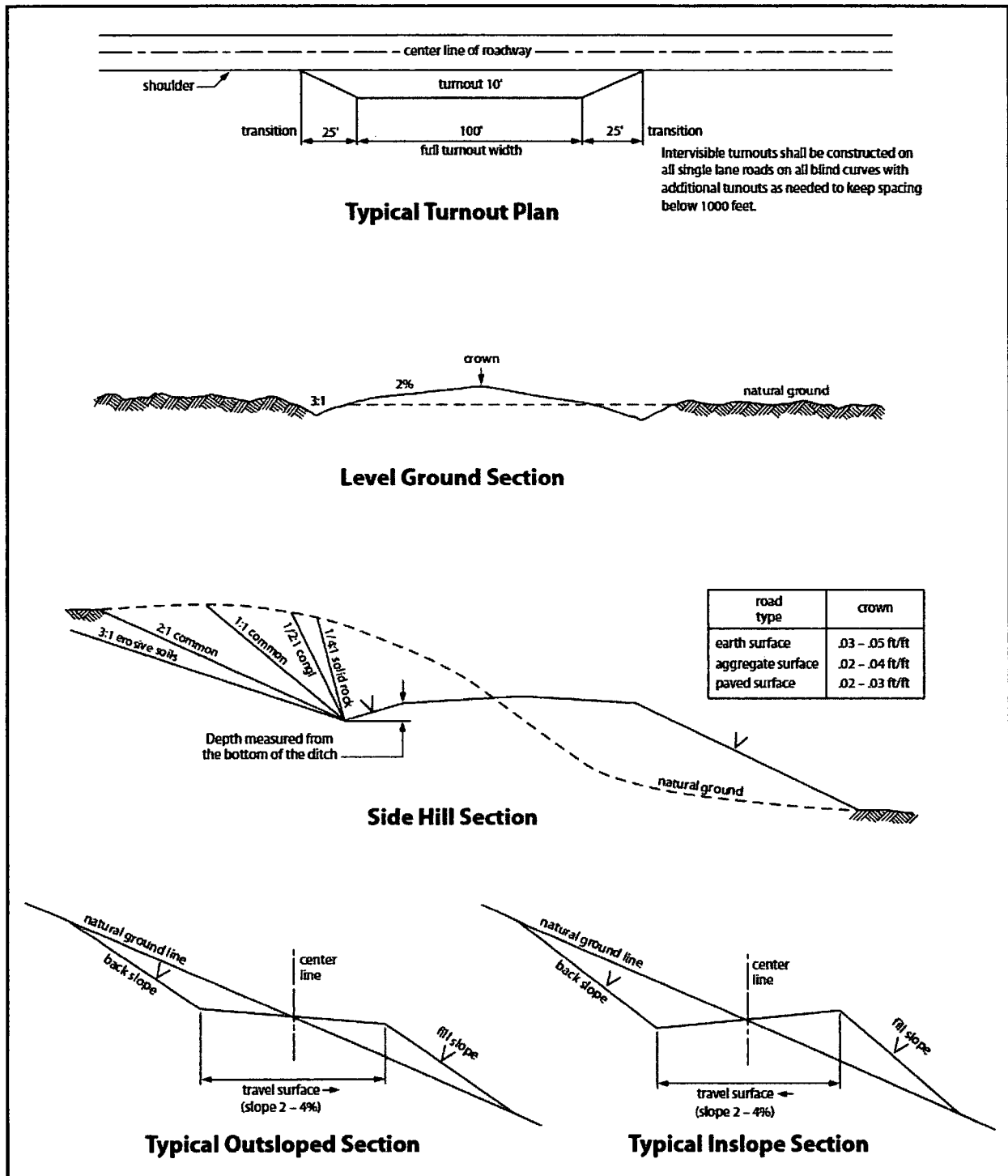


Figure 1. Cross-sections and plans for typical road sections representative of BLM resource or FS local and higher-class roads.

VII. PRODUCTION (POST DRILLING)

A. WELL STRUCTURES & FACILITIES

Placement of Production Facilities

Production facilities should be placed on the well pad to allow for maximum interim recontouring and revegetation of the well location.

Exclosure Netting (Open-top Tanks)

Immediately following active drilling or completion operations, the operator will take actions necessary to prevent wildlife and livestock access, including avian wildlife, to all open-topped tanks that contain or have the potential to contain salinity sufficient to cause harm to wildlife or livestock, hydrocarbons, or Resource Conservation and Recovery Act of 1976-exempt hazardous substances. At a minimum, the operator will net, screen, or cover open-topped tanks to exclude wildlife and livestock and prevent mortality. If the operator uses netting, the operator will cover and secure the open portion of the tank to prevent wildlife entry. The operator will net, screen, or cover the tanks until the operator removes the tanks from the location or the tanks no longer contain substances that could be harmful to wildlife or livestock. Use a maximum netting mesh size of 1 ½ inches. The netting must not be in contact with fluids and must not have holes or gaps.

Chemical and Fuel Secondary Containment and Exclosure Screening

The operator will prevent all hazardous, poisonous, flammable, and toxic substances from coming into contact with soil and water. At a minimum, the operator will install and maintain an impervious secondary containment system for any tank or barrel containing hazardous, poisonous, flammable, or toxic substances sufficient to contain the contents of the tank or barrel and any drips, leaks, and anticipated precipitation. The operator will dispose of fluids within the containment system that do not meet applicable state or U. S. Environmental Protection Agency livestock water standards in accordance with state law; the operator must not drain the fluids to the soil or ground. The operator will design, construct, and maintain all secondary containment systems to prevent wildlife and livestock exposure to harmful substances. At a minimum, the operator will install effective wildlife and livestock exclosure systems such as fencing, netting, expanded metal mesh, lids, and grate covers. Use a maximum netting mesh size of 1 ½ inches.

Open-Vent Exhaust Stack Exclosures

The operator will construct, modify, equip, and maintain all open-vent exhaust stacks on production equipment to prevent birds and bats from entering, and to discourage perching, roosting, and nesting. (*Recommended exclosure structures on open-vent exhaust stacks are in the shape of a cone.*) Production equipment includes, but may not be limited to, tanks, heater-treaters, separators, dehydrators, flare stacks, in-line units, and compressor mufflers.

Containment Structures

Proposed production facilities such as storage tanks and other vessels will have a secondary containment structure that is constructed to hold the capacity of 1.5 times the largest tank, plus freeboard to account for precipitation, unless more stringent protective requirements are deemed necessary.

Painting Requirement

All above-ground structures including meter housing that are not subject to safety requirements shall be painted a flat non-reflective paint color, **Shale Green** from the BLM Standard Environmental Color Chart (CC-001: June 2008).

B. PIPELINES**STANDARD STIPULATIONS FOR SURFACE INSTALLED PIPELINES**

A copy of the application (Grant, Sundry Notice, APD) and attachments, including stipulations, survey plat and/or map, will be on location during construction. BLM personnel may request to you a copy of your permit during construction to ensure compliance with all stipulations.

Holder agrees to comply with the following stipulations to the satisfaction of the Authorized Officer:

1. The holder shall indemnify the United States against any liability for damage to life or property arising from the occupancy or use of public lands under this grant.
2. The holder shall comply with all applicable Federal laws and regulations existing or hereafter enacted or promulgated. In any event, the holder shall comply with the Toxic Substances Control Act of 1976 as amended, 15 USC 2601 et seq. (1982) with regards to any toxic substances that are used, generated by or stored on the right-of-way or on facilities authorized under this right-of-way grant. (See 40 CFR, Part 702-799 and especially, provisions on polychlorinated biphenyls, 40 CFR 761.1-761.193.) Additionally, any release of toxic substances (leaks, spills, etc.) in excess of the reportable quantity established by 40 CFR, Part 117 shall be reported as required by the Comprehensive Environmental Response, Compensation, and Liability Act, section 102b. A copy of any report required or requested by any Federal agency or State government as a result of a reportable release or spill of any toxic substances shall be furnished to the authorized officer concurrent with the filing of the reports to the involved Federal agency or State government.
3. The holder agrees to indemnify the United States against any liability arising from the release of any hazardous substance or hazardous waste (as these terms are defined in the Comprehensive Environmental Response, Compensation and Liability Act of 1980, 42 U.S.C. 9601, et seq. or the Resource

Conservation and Recovery Act, 42 U.S.C. 6901, et seq.) on the Right-of-Way (unless the release or threatened release is wholly unrelated to activity of the Right-of-Way holder's activity on the Right-of-Way), or resulting from the activity of the Right-of-Way holder on the Right-of-Way. This agreement applies without regard to whether a release is caused by the holder, its agent, or unrelated third parties.

4. The holder shall be liable for damage or injury to the United States to the extent provided by 43 CFR Sec. 2883.1-4. The holder shall be held to a standard of strict liability for damage or injury to the United States resulting from pipe rupture, fire, or spills caused or substantially aggravated by any of the following within the right-of-way or permit area:

- a. Activities of the holder including, but not limited to construction, operation, maintenance, and termination of the facility.
- b. Activities of other parties including, but not limited to:
 - (1) Land clearing.
 - (2) Earth-disturbing and earth-moving work.
 - (3) Blasting.
 - (4) Vandalism and sabotage.
- c. Acts of God.

The maximum limitation for such strict liability damages shall not exceed one million dollars (\$1,000,000) for any one event, and any liability in excess of such amount shall be determined by the ordinary rules of negligence of the jurisdiction in which the damage or injury occurred.

This section shall not impose strict liability for damage or injury resulting primarily from an act of war or from the negligent acts or omissions of the United States.

5. If, during any phase of the construction, operation, maintenance, or termination of the pipeline, any oil, salt water, or other pollutant should be discharged from the pipeline system, impacting Federal lands, the control and total removal, disposal, and cleaning up of such oil, salt water, or other pollutant, wherever found, shall be the responsibility of the holder, regardless of fault. Upon failure of the holder to control, dispose of, or clean up such discharge on or affecting Federal lands, or to repair all damages resulting therefrom, on the Federal lands, the Authorized Officer may take such measures as he deems necessary to control and clean up the discharge and restore the area, including, where appropriate, the aquatic environment and fish and wildlife habitats, at the full expense of the holder. Such action by the Authorized Officer shall not relieve the holder of any responsibility as provided herein.

6. All construction and maintenance activity will be confined to the authorized right-of-way width of 20 feet. If the pipeline route follows an existing road or buried pipeline right-of-way, the surface pipeline must be

installed no farther than 10 feet from the edge of the road or buried pipeline right-of-way. If existing surface pipelines prevent this distance, the proposed surface pipeline must be installed immediately adjacent to the outer surface pipeline. All construction and maintenance activity will be confined to existing roads or right-of-ways.

7. No blading or clearing of any vegetation will be allowed unless approved in writing by the Authorized Officer.

8. The holder shall install the pipeline on the surface in such a manner that will minimize suspension of the pipeline across low areas in the terrain. In hummocky or dune areas, the pipeline will be "snaked" around hummocks and dunes rather than suspended across these features.

9. The pipeline shall be buried with a minimum of 24 inches under all roads, "two-tracks," and trails. Burial of the pipe will continue for 20 feet on each side of each crossing. The condition of the road, upon completion of construction, shall be returned to at least its former state with no bumps or dips remaining in the road surface.

10. The holder shall minimize disturbance to existing fences and other improvements on public lands. The holder is required to promptly repair improvements to at least their former state. Functional use of these improvements will be maintained at all times. The holder will contact the owner of any improvements prior to disturbing them. When necessary to pass through a fence line, the fence shall be braced on both sides of the passageway prior to cutting of the fence. No permanent gates will be allowed unless approved by the Authorized Officer.

11. In those areas where erosion control structures are required to stabilize soil conditions, the holder will install such structures as are suitable for the specific soil conditions being encountered and which are in accordance with sound resource management practices.

12. Excluding the pipe, all above-ground structures not subject to safety requirement shall be painted by the holder to blend with the natural color of the landscape. The paint used shall be a color which simulates "Standard Environmental Colors" – **Shale Green**, Munsell Soil Color No. 5Y 4/2; designated by the Rocky Mountain Five State Interagency Committee.

13. The pipeline will be identified by signs at the point of origin and completion of the right-of-way and at all road crossings. At a minimum, signs will state the holder's name, BLM serial number, and the product being transported. Signs will be maintained in a legible condition for the life of the pipeline.

14. The holder shall not use the pipeline route as a road for purposes other than

routine maintenance as determined necessary by the Authorized Officer in consultation with the holder. The holder will take whatever steps are necessary to ensure that the pipeline route is not used as a roadway.

15. Any cultural and/or paleontological resource (historic or prehistoric site or object) discovered by the holder, or any person working on his behalf, on public or Federal land shall be immediately reported to the authorized officer. Holder shall suspend all operations in the immediate area of such discovery until written authorization to proceed is issued by the authorized officer. An evaluation of the discovery will be made by the authorized officer to determine appropriate cultural or scientific values. The holder will be responsible for the cost of evaluation and any decision as to proper mitigation measures will be made by the authorized officer after consulting with the holder.

16. The operator shall be held responsible if noxious weeds become established within the areas of operations. Weed control shall be required on the disturbed land where noxious weeds exist, which includes the roads, powerline corridor, and adjacent land affected by the establishment of weeds due to this action. The operator shall consult with the Authorized Officer for acceptable weed control methods, which include following EPA and BLM requirements and policies.

17. Surface pipelines must be less than or equal to 4 inches and a working pressure below 125 psi.

18. Special Stipulations:

- a. **Lesser Prairie-Chicken:** Oil and gas activities will not be allowed in lesser prairie-chicken habitat during the period from March 1st through June 15th annually. During that period, other activities that produce noise or involve human activity, such as the maintenance of oil and gas facilities and pipeline, road, and well pad construction, will be allowed except between 3:00 am and 9:00 am. The 3:00 am to 9:00 am restriction will not apply to normal, around-the-clock operations, such as venting, flaring, or pumping, which do not require a human presence during this period. Normal vehicle use on existing roads will not be restricted.
- b. This authorization is subject to your Certificate of Participation and/or Certificate of Inclusion under the New Mexico Candidate Conservation Agreement. Because it involves surface disturbing activities covered under your Certificate, your Habitat Conservation Fund Account with the Center of Excellence for Hazardous Materials Management (CEHMM) will be debited according to Exhibit B Part 2 of the Certificate of Participation.

VIII. INTERIM RECLAMATION

During the life of the development, all disturbed areas not needed for active support of production operations should undergo interim reclamation in order to minimize the environmental impacts of development on other resources and uses.

Within six (6) months of well completion, operators should work with BLM surface management specialists (Jim Amos: 575-234-5909) to devise the best strategies to reduce the size of the location. Interim reclamation should allow for remedial well operations, as well as safe and efficient removal of oil and gas.

During reclamation, the removal of caliche is important to increasing the success of revegetating the site. Removed caliche that is free of contaminants may be used for road repairs, fire walls or for building other roads and locations. In order to operate the well or complete workover operations, it may be necessary to drive, park and operate on restored interim vegetation within the previously disturbed area. Disturbing revegetated areas for production or workover operations will be allowed. If there is significant disturbance and loss of vegetation, the area will need to be revegetated. Communicate with the appropriate BLM office for any exceptions/exemptions if needed.

All disturbed areas after they have been satisfactorily prepared need to be reseeded with the seed mixture provided below.

Upon completion of interim reclamation, the operator shall submit a Sundry Notices and Reports on Wells, Subsequent Report of Reclamation (Form 3160-5).

IX. FINAL ABANDONMENT & RECLAMATION

At final abandonment, well locations, production facilities, and access roads must undergo "final" reclamation so that the character and productivity of the land are restored.

Earthwork for final reclamation must be completed within six (6) months of well plugging. All pads, pits, facility locations and roads must be reclaimed to a satisfactory revegetated, safe, and stable condition, unless an agreement is made with the landowner or BLM to keep the road and/or pad intact.

After all disturbed areas have been satisfactorily prepared, these areas need to be revegetated with the seed mixture provided below. Seeding should be accomplished by drilling on the contour whenever practical or by other approved methods. Seeding may need to be repeated until revegetation is successful, as determined by the BLM.

Operators shall contact a BLM surface protection specialist prior to surface abandonment operations for site specific objectives (Jim Amos: 575-234-5909).

Ground-level Abandoned Well Marker to avoid raptor perching: Upon the plugging and subsequent abandonment of the well, the well marker will be installed at ground level on a plate containing the pertinent information for the plugged well.

Seed Mixture for LPC Sand/Shinnery Sites

Holder shall seed all disturbed areas with the seed mixture listed below. The seed mixture shall be planted in the amounts specified in pounds of pure live seed (PLS)* per acre. There shall be no primary or secondary noxious weeds in the seed mixture. Seed will be tested and the viability testing of seed shall be done in accordance with State law(s) and within nine (9) months prior to purchase. Commercial seed shall be either certified or registered seed. The seed container shall be tagged in accordance with State law(s) and available for inspection by the Authorized Officer.

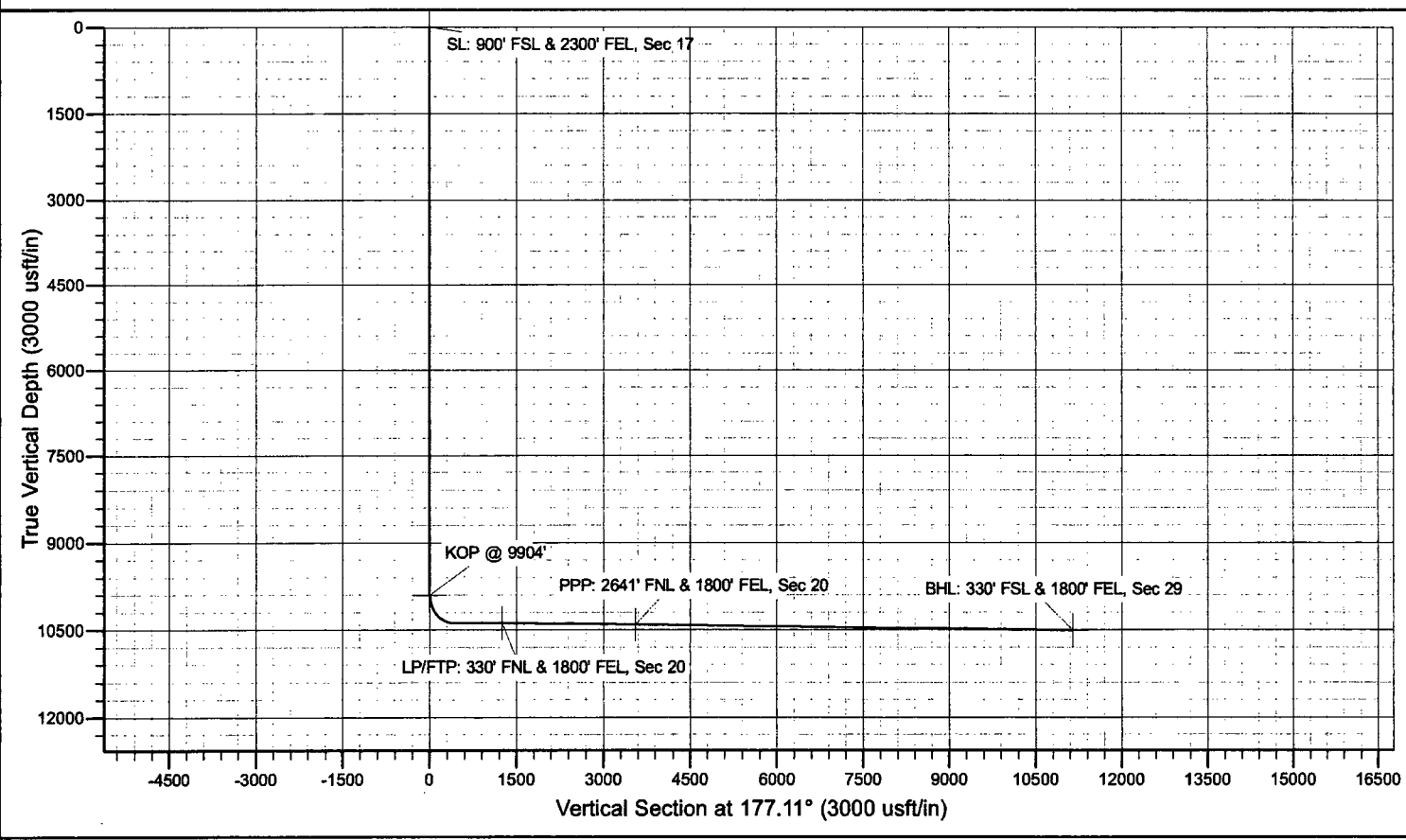
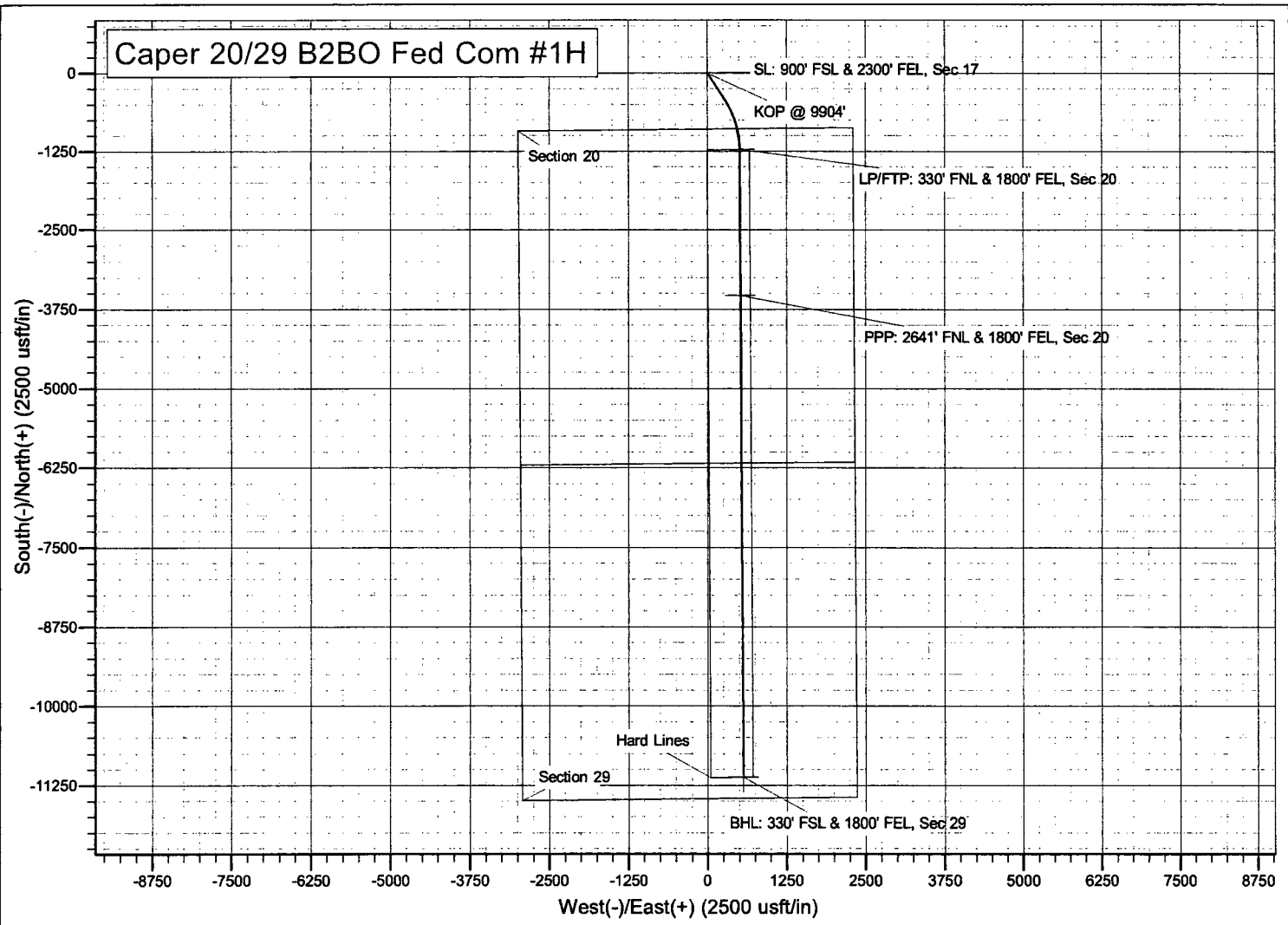
Seed will be planted using a drill equipped with a depth regulator to ensure proper depth of planting where drilling is possible. The seed mixture will be evenly and uniformly planted over the disturbed area (smaller/heavier seeds have a tendency to drop the bottom of the drill and are planted first). Holder shall take appropriate measures to ensure this does not occur. Where drilling is not possible, seed will be broadcast and the area shall be raked or chained to cover the seed. When broadcasting the seed, the pounds per acre are to be doubled. Seeding shall be repeated until a satisfactory stand is established as determined by the Authorized Officer. Evaluation of growth may not be made before completion of at least one full growing season after seeding.

Species to be planted in pounds of pure live seed* per acre:

| <u>Species</u> | <u>lb/acre</u> |
|---------------------|----------------|
| Plains Bristlegrass | 5lbs/A |
| Sand Bluestem | 5lbs/A |
| Little Bluestem | 3lbs/A |
| Big Bluestem | 6lbs/A |
| Plains Coreopsis | 2lbs/A |
| Sand Dropseed | 1lbs/A |

*Pounds of pure live seed:

Pounds of seed x percent purity x percent germination = pounds pure live seed



Mewbourne Oil Company

Lea County, New Mexico NAD 83

Caper 20/29 B2BO Fed Com #1H

Sec 17, T21S, R32E

SL: 900' FSL & 2300' FEL, Sec 17

BHL: 330' FSL & 1800' FEL, Sec 29

Plan: Design #1

Standard Planning Report

16 October, 2017

Planning Report

| | | | |
|------------------|-----------------------------------|-------------------------------------|--|
| Database: | Hobbs | Local Co-ordinate Reference: | Site Caper 20/29 B2BO Fed Com #1H |
| Company: | Mewbourne Oil Company | TVD Reference: | WELL @ 3666.0usft (Original Well Elev) |
| Project: | Lea County, New Mexico NAD 83 | MD Reference: | WELL @ 3666.0usft (Original Well Elev) |
| Site: | Caper 20/29 B2BO Fed Com #1H | North Reference: | Grid |
| Well: | Sec 17, T21S, R32E | Survey Calculation Method: | Minimum Curvature |
| Wellbore: | BHL: 330' FSL & 1800' FEL, Sec 29 | | |
| Design: | Design #1 | | |

| | | | |
|--------------------|-------------------------------|----------------------|----------------|
| Project | Lea County, New Mexico NAD 83 | | |
| Map System: | US State Plane 1983 | System Datum: | Mean Sea Level |
| Geo Datum: | North American Datum 1983 | | |
| Map Zone: | New Mexico Eastern Zone | | |

| | | | |
|------------------------------|------------------------------|-------------------------------|-------------------------------------|
| Site | Caper 20/29 B2BO Fed Com #1H | | |
| Site Position: | Northing: | 536,727.00 usft | Latitude: 32° 28' 26.078 N |
| From: Map | Easting: | 737,965.00 usft | Longitude: 103° 41' 44.631 W |
| Position Uncertainty: | 0.0 usft | Slot Radius: 13-3/16 " | Grid Convergence: 0.34 ° |

| | | | |
|-----------------------------|--------------------|----------------------------|-----------------------------------|
| Well | Sec 17, T21S, R32E | | |
| Well Position | +N/-S | 0.0 usft | Northing: 536,727.00 usft |
| | +E/-W | 0.0 usft | Easting: 737,965.00 usft |
| Position Uncertainty | 0.0 usft | Wellhead Elevation: | 3,666.0 usft |
| | | | Ground Level: 3,639.0 usft |

| | | | | | |
|------------------|-----------------------------------|--------------------|--------------------|------------------|-----------------------|
| Wellbore | BHL: 330' FSL & 1800' FEL, Sec 29 | | | | |
| Magnetics | Model Name | Sample Date | Declination | Dip Angle | Field Strength |
| | | | (°) | (°) | (nT) |
| | IGRF2010 | 10/16/2017 | 6.88 | 60.24 | 48,118 |

| | | | | |
|--------------------------|-------------------------|--------------|----------------------|------------------|
| Design | Design #1 | | | |
| Audit Notes: | | | | |
| Version: | Phase: | PROTOTYPE | Tie On Depth: | 0.0 |
| Vertical Section: | Depth From (TVD) | +N/-S | +E/-W | Direction |
| | (usft) | (usft) | (usft) | (°) |
| | 0.0 | 0.0 | 0.0 | 177.11 |

| Plan Sections | | | | | | | | | | |
|-----------------------|-----------------|-------------|-----------------------|--------------|--------------|-------------------------|------------------------|-----------------------|---------|-----------------------|
| Measured Depth (usft) | Inclination (°) | Azimuth (°) | Vertical Depth (usft) | +N/-S (usft) | +E/-W (usft) | Dogleg Rate (°/100usft) | Build Rate (°/100usft) | Turn Rate (°/100usft) | TFO (°) | Target |
| 0.0 | 0.00 | 0.00 | 0.0 | 0.0 | 0.0 | 0.00 | 0.00 | 0.00 | 0.00 | |
| 9,903.5 | 0.00 | 0.00 | 9,903.5 | 0.0 | 0.0 | 0.00 | 0.00 | 0.00 | 0.00 | KOP @ 9904' |
| 10,659.8 | 90.75 | 147.08 | 10,381.0 | -406.0 | 262.9 | 12.00 | 12.00 | 0.00 | 147.08 | |
| 11,525.0 | 89.25 | 179.68 | 10,381.0 | -1,224.0 | 507.0 | 3.77 | -0.17 | 3.77 | 92.56 | LP/FTP: 330' FNL & 1 |
| 21,431.0 | 89.25 | 179.68 | 10,511.0 | -11,129.0 | 562.0 | 0.00 | 0.00 | 0.00 | 0.00 | BHL: 330' FSL & 1800' |

Planning Report

| | | | |
|------------------|-----------------------------------|-------------------------------------|--|
| Database: | Hobbs | Local Co-ordinate Reference: | Site Caper 20/29 B2BO Fed Com #1H |
| Company: | Mewbourne Oil Company | TVD Reference: | WELL @ 3666.0usft (Original Well Elev) |
| Project: | Lea County, New Mexico NAD 83 | MD Reference: | WELL @ 3666.0usft (Original Well Elev) |
| Site: | Caper 20/29 B2BO Fed Com #1H | North Reference: | Grid |
| Well: | Sec 17, T21S, R32E | Survey Calculation Method: | Minimum Curvature |
| Wellbore: | BHL: 330' FSL & 1800' FEL, Sec 29 | | |
| Design: | Design #1 | | |

| Planned Survey | | | | | | | | | |
|----------------------------------|--------------------|----------------|-----------------------------|-----------------|-----------------|-------------------------------|-------------------------------|------------------------------|-----------------------------|
| Measured Depth (usft) | Inclination (°) | Azimuth (°) | Vertical Depth (usft) | +N/-S (usft) | +E/-W (usft) | Vertical Section (usft) | Dogleg Rate (°/100usft) | Build Rate (°/100usft) | Turn Rate (°/100usft) |
| 0.0 | 0.00 | 0.00 | 0.0 | 0.0 | 0.0 | 0.0 | 0.00 | 0.00 | 0.00 |
| SL: 900' FSL & 2300' FEL, Sec 17 | | | | | | | | | |
| 100.0 | 0.00 | 0.00 | 100.0 | 0.0 | 0.0 | 0.0 | 0.00 | 0.00 | 0.00 |
| 200.0 | 0.00 | 0.00 | 200.0 | 0.0 | 0.0 | 0.0 | 0.00 | 0.00 | 0.00 |
| 300.0 | 0.00 | 0.00 | 300.0 | 0.0 | 0.0 | 0.0 | 0.00 | 0.00 | 0.00 |
| 400.0 | 0.00 | 0.00 | 400.0 | 0.0 | 0.0 | 0.0 | 0.00 | 0.00 | 0.00 |
| 500.0 | 0.00 | 0.00 | 500.0 | 0.0 | 0.0 | 0.0 | 0.00 | 0.00 | 0.00 |
| 600.0 | 0.00 | 0.00 | 600.0 | 0.0 | 0.0 | 0.0 | 0.00 | 0.00 | 0.00 |
| 700.0 | 0.00 | 0.00 | 700.0 | 0.0 | 0.0 | 0.0 | 0.00 | 0.00 | 0.00 |
| 800.0 | 0.00 | 0.00 | 800.0 | 0.0 | 0.0 | 0.0 | 0.00 | 0.00 | 0.00 |
| 900.0 | 0.00 | 0.00 | 900.0 | 0.0 | 0.0 | 0.0 | 0.00 | 0.00 | 0.00 |
| 1,000.0 | 0.00 | 0.00 | 1,000.0 | 0.0 | 0.0 | 0.0 | 0.00 | 0.00 | 0.00 |
| 1,100.0 | 0.00 | 0.00 | 1,100.0 | 0.0 | 0.0 | 0.0 | 0.00 | 0.00 | 0.00 |
| 1,200.0 | 0.00 | 0.00 | 1,200.0 | 0.0 | 0.0 | 0.0 | 0.00 | 0.00 | 0.00 |
| 1,300.0 | 0.00 | 0.00 | 1,300.0 | 0.0 | 0.0 | 0.0 | 0.00 | 0.00 | 0.00 |
| 1,400.0 | 0.00 | 0.00 | 1,400.0 | 0.0 | 0.0 | 0.0 | 0.00 | 0.00 | 0.00 |
| 1,500.0 | 0.00 | 0.00 | 1,500.0 | 0.0 | 0.0 | 0.0 | 0.00 | 0.00 | 0.00 |
| 1,600.0 | 0.00 | 0.00 | 1,600.0 | 0.0 | 0.0 | 0.0 | 0.00 | 0.00 | 0.00 |
| 1,700.0 | 0.00 | 0.00 | 1,700.0 | 0.0 | 0.0 | 0.0 | 0.00 | 0.00 | 0.00 |
| 1,800.0 | 0.00 | 0.00 | 1,800.0 | 0.0 | 0.0 | 0.0 | 0.00 | 0.00 | 0.00 |
| 1,900.0 | 0.00 | 0.00 | 1,900.0 | 0.0 | 0.0 | 0.0 | 0.00 | 0.00 | 0.00 |
| 2,000.0 | 0.00 | 0.00 | 2,000.0 | 0.0 | 0.0 | 0.0 | 0.00 | 0.00 | 0.00 |
| 2,100.0 | 0.00 | 0.00 | 2,100.0 | 0.0 | 0.0 | 0.0 | 0.00 | 0.00 | 0.00 |
| 2,200.0 | 0.00 | 0.00 | 2,200.0 | 0.0 | 0.0 | 0.0 | 0.00 | 0.00 | 0.00 |
| 2,300.0 | 0.00 | 0.00 | 2,300.0 | 0.0 | 0.0 | 0.0 | 0.00 | 0.00 | 0.00 |
| 2,400.0 | 0.00 | 0.00 | 2,400.0 | 0.0 | 0.0 | 0.0 | 0.00 | 0.00 | 0.00 |
| 2,500.0 | 0.00 | 0.00 | 2,500.0 | 0.0 | 0.0 | 0.0 | 0.00 | 0.00 | 0.00 |
| 2,600.0 | 0.00 | 0.00 | 2,600.0 | 0.0 | 0.0 | 0.0 | 0.00 | 0.00 | 0.00 |
| 2,700.0 | 0.00 | 0.00 | 2,700.0 | 0.0 | 0.0 | 0.0 | 0.00 | 0.00 | 0.00 |
| 2,800.0 | 0.00 | 0.00 | 2,800.0 | 0.0 | 0.0 | 0.0 | 0.00 | 0.00 | 0.00 |
| 2,900.0 | 0.00 | 0.00 | 2,900.0 | 0.0 | 0.0 | 0.0 | 0.00 | 0.00 | 0.00 |
| 3,000.0 | 0.00 | 0.00 | 3,000.0 | 0.0 | 0.0 | 0.0 | 0.00 | 0.00 | 0.00 |
| 3,100.0 | 0.00 | 0.00 | 3,100.0 | 0.0 | 0.0 | 0.0 | 0.00 | 0.00 | 0.00 |
| 3,200.0 | 0.00 | 0.00 | 3,200.0 | 0.0 | 0.0 | 0.0 | 0.00 | 0.00 | 0.00 |
| 3,300.0 | 0.00 | 0.00 | 3,300.0 | 0.0 | 0.0 | 0.0 | 0.00 | 0.00 | 0.00 |
| 3,400.0 | 0.00 | 0.00 | 3,400.0 | 0.0 | 0.0 | 0.0 | 0.00 | 0.00 | 0.00 |
| 3,500.0 | 0.00 | 0.00 | 3,500.0 | 0.0 | 0.0 | 0.0 | 0.00 | 0.00 | 0.00 |
| 3,600.0 | 0.00 | 0.00 | 3,600.0 | 0.0 | 0.0 | 0.0 | 0.00 | 0.00 | 0.00 |
| 3,700.0 | 0.00 | 0.00 | 3,700.0 | 0.0 | 0.0 | 0.0 | 0.00 | 0.00 | 0.00 |
| 3,800.0 | 0.00 | 0.00 | 3,800.0 | 0.0 | 0.0 | 0.0 | 0.00 | 0.00 | 0.00 |
| 3,900.0 | 0.00 | 0.00 | 3,900.0 | 0.0 | 0.0 | 0.0 | 0.00 | 0.00 | 0.00 |
| 4,000.0 | 0.00 | 0.00 | 4,000.0 | 0.0 | 0.0 | 0.0 | 0.00 | 0.00 | 0.00 |
| 4,100.0 | 0.00 | 0.00 | 4,100.0 | 0.0 | 0.0 | 0.0 | 0.00 | 0.00 | 0.00 |
| 4,200.0 | 0.00 | 0.00 | 4,200.0 | 0.0 | 0.0 | 0.0 | 0.00 | 0.00 | 0.00 |
| 4,300.0 | 0.00 | 0.00 | 4,300.0 | 0.0 | 0.0 | 0.0 | 0.00 | 0.00 | 0.00 |
| 4,400.0 | 0.00 | 0.00 | 4,400.0 | 0.0 | 0.0 | 0.0 | 0.00 | 0.00 | 0.00 |
| 4,500.0 | 0.00 | 0.00 | 4,500.0 | 0.0 | 0.0 | 0.0 | 0.00 | 0.00 | 0.00 |
| 4,600.0 | 0.00 | 0.00 | 4,600.0 | 0.0 | 0.0 | 0.0 | 0.00 | 0.00 | 0.00 |
| 4,700.0 | 0.00 | 0.00 | 4,700.0 | 0.0 | 0.0 | 0.0 | 0.00 | 0.00 | 0.00 |
| 4,800.0 | 0.00 | 0.00 | 4,800.0 | 0.0 | 0.0 | 0.0 | 0.00 | 0.00 | 0.00 |
| 4,900.0 | 0.00 | 0.00 | 4,900.0 | 0.0 | 0.0 | 0.0 | 0.00 | 0.00 | 0.00 |
| 5,000.0 | 0.00 | 0.00 | 5,000.0 | 0.0 | 0.0 | 0.0 | 0.00 | 0.00 | 0.00 |
| 5,100.0 | 0.00 | 0.00 | 5,100.0 | 0.0 | 0.0 | 0.0 | 0.00 | 0.00 | 0.00 |
| 5,200.0 | 0.00 | 0.00 | 5,200.0 | 0.0 | 0.0 | 0.0 | 0.00 | 0.00 | 0.00 |

Planning Report

| | | | |
|------------------|-----------------------------------|-------------------------------------|--|
| Database: | Hobbs | Local Co-ordinate Reference: | Site Caper 20/29 B2BO Fed Com #1H |
| Company: | Mewbourne Oil Company | TVD Reference: | WELL @ 3666.0usft (Original Well Elev) |
| Project: | Lea County, New Mexico NAD 83 | MD Reference: | WELL @ 3666.0usft (Original Well Elev) |
| Site: | Caper 20/29 B2BO Fed Com #1H | North Reference: | Grid |
| Well: | Sec 17, T21S, R32E | Survey Calculation Method: | Minimum Curvature |
| Wellbore: | BHL: 330' FSL & 1800' FEL, Sec 29 | | |
| Design: | Design #1 | | |

| Planned Survey | | | | | | | | | |
|-----------------------|-----------------|-------------|-----------------------|--------------|--------------|-------------------------|-------------------------|------------------------|-----------------------|
| Measured Depth (usft) | Inclination (°) | Azimuth (°) | Vertical Depth (usft) | +N/-S (usft) | +E/-W (usft) | Vertical Section (usft) | Dogleg Rate (°/100usft) | Build Rate (°/100usft) | Turn Rate (°/100usft) |
| 5,300.0 | 0.00 | 0.00 | 5,300.0 | 0.0 | 0.0 | 0.0 | 0.00 | 0.00 | 0.00 |
| 5,400.0 | 0.00 | 0.00 | 5,400.0 | 0.0 | 0.0 | 0.0 | 0.00 | 0.00 | 0.00 |
| 5,500.0 | 0.00 | 0.00 | 5,500.0 | 0.0 | 0.0 | 0.0 | 0.00 | 0.00 | 0.00 |
| 5,600.0 | 0.00 | 0.00 | 5,600.0 | 0.0 | 0.0 | 0.0 | 0.00 | 0.00 | 0.00 |
| 5,700.0 | 0.00 | 0.00 | 5,700.0 | 0.0 | 0.0 | 0.0 | 0.00 | 0.00 | 0.00 |
| 5,800.0 | 0.00 | 0.00 | 5,800.0 | 0.0 | 0.0 | 0.0 | 0.00 | 0.00 | 0.00 |
| 5,900.0 | 0.00 | 0.00 | 5,900.0 | 0.0 | 0.0 | 0.0 | 0.00 | 0.00 | 0.00 |
| 6,000.0 | 0.00 | 0.00 | 6,000.0 | 0.0 | 0.0 | 0.0 | 0.00 | 0.00 | 0.00 |
| 6,100.0 | 0.00 | 0.00 | 6,100.0 | 0.0 | 0.0 | 0.0 | 0.00 | 0.00 | 0.00 |
| 6,200.0 | 0.00 | 0.00 | 6,200.0 | 0.0 | 0.0 | 0.0 | 0.00 | 0.00 | 0.00 |
| 6,300.0 | 0.00 | 0.00 | 6,300.0 | 0.0 | 0.0 | 0.0 | 0.00 | 0.00 | 0.00 |
| 6,400.0 | 0.00 | 0.00 | 6,400.0 | 0.0 | 0.0 | 0.0 | 0.00 | 0.00 | 0.00 |
| 6,500.0 | 0.00 | 0.00 | 6,500.0 | 0.0 | 0.0 | 0.0 | 0.00 | 0.00 | 0.00 |
| 6,600.0 | 0.00 | 0.00 | 6,600.0 | 0.0 | 0.0 | 0.0 | 0.00 | 0.00 | 0.00 |
| 6,700.0 | 0.00 | 0.00 | 6,700.0 | 0.0 | 0.0 | 0.0 | 0.00 | 0.00 | 0.00 |
| 6,800.0 | 0.00 | 0.00 | 6,800.0 | 0.0 | 0.0 | 0.0 | 0.00 | 0.00 | 0.00 |
| 6,900.0 | 0.00 | 0.00 | 6,900.0 | 0.0 | 0.0 | 0.0 | 0.00 | 0.00 | 0.00 |
| 7,000.0 | 0.00 | 0.00 | 7,000.0 | 0.0 | 0.0 | 0.0 | 0.00 | 0.00 | 0.00 |
| 7,100.0 | 0.00 | 0.00 | 7,100.0 | 0.0 | 0.0 | 0.0 | 0.00 | 0.00 | 0.00 |
| 7,200.0 | 0.00 | 0.00 | 7,200.0 | 0.0 | 0.0 | 0.0 | 0.00 | 0.00 | 0.00 |
| 7,300.0 | 0.00 | 0.00 | 7,300.0 | 0.0 | 0.0 | 0.0 | 0.00 | 0.00 | 0.00 |
| 7,400.0 | 0.00 | 0.00 | 7,400.0 | 0.0 | 0.0 | 0.0 | 0.00 | 0.00 | 0.00 |
| 7,500.0 | 0.00 | 0.00 | 7,500.0 | 0.0 | 0.0 | 0.0 | 0.00 | 0.00 | 0.00 |
| 7,600.0 | 0.00 | 0.00 | 7,600.0 | 0.0 | 0.0 | 0.0 | 0.00 | 0.00 | 0.00 |
| 7,700.0 | 0.00 | 0.00 | 7,700.0 | 0.0 | 0.0 | 0.0 | 0.00 | 0.00 | 0.00 |
| 7,800.0 | 0.00 | 0.00 | 7,800.0 | 0.0 | 0.0 | 0.0 | 0.00 | 0.00 | 0.00 |
| 7,900.0 | 0.00 | 0.00 | 7,900.0 | 0.0 | 0.0 | 0.0 | 0.00 | 0.00 | 0.00 |
| 8,000.0 | 0.00 | 0.00 | 8,000.0 | 0.0 | 0.0 | 0.0 | 0.00 | 0.00 | 0.00 |
| 8,100.0 | 0.00 | 0.00 | 8,100.0 | 0.0 | 0.0 | 0.0 | 0.00 | 0.00 | 0.00 |
| 8,200.0 | 0.00 | 0.00 | 8,200.0 | 0.0 | 0.0 | 0.0 | 0.00 | 0.00 | 0.00 |
| 8,300.0 | 0.00 | 0.00 | 8,300.0 | 0.0 | 0.0 | 0.0 | 0.00 | 0.00 | 0.00 |
| 8,400.0 | 0.00 | 0.00 | 8,400.0 | 0.0 | 0.0 | 0.0 | 0.00 | 0.00 | 0.00 |
| 8,500.0 | 0.00 | 0.00 | 8,500.0 | 0.0 | 0.0 | 0.0 | 0.00 | 0.00 | 0.00 |
| 8,600.0 | 0.00 | 0.00 | 8,600.0 | 0.0 | 0.0 | 0.0 | 0.00 | 0.00 | 0.00 |
| 8,700.0 | 0.00 | 0.00 | 8,700.0 | 0.0 | 0.0 | 0.0 | 0.00 | 0.00 | 0.00 |
| 8,800.0 | 0.00 | 0.00 | 8,800.0 | 0.0 | 0.0 | 0.0 | 0.00 | 0.00 | 0.00 |
| 8,900.0 | 0.00 | 0.00 | 8,900.0 | 0.0 | 0.0 | 0.0 | 0.00 | 0.00 | 0.00 |
| 9,000.0 | 0.00 | 0.00 | 9,000.0 | 0.0 | 0.0 | 0.0 | 0.00 | 0.00 | 0.00 |
| 9,100.0 | 0.00 | 0.00 | 9,100.0 | 0.0 | 0.0 | 0.0 | 0.00 | 0.00 | 0.00 |
| 9,200.0 | 0.00 | 0.00 | 9,200.0 | 0.0 | 0.0 | 0.0 | 0.00 | 0.00 | 0.00 |
| 9,300.0 | 0.00 | 0.00 | 9,300.0 | 0.0 | 0.0 | 0.0 | 0.00 | 0.00 | 0.00 |
| 9,400.0 | 0.00 | 0.00 | 9,400.0 | 0.0 | 0.0 | 0.0 | 0.00 | 0.00 | 0.00 |
| 9,500.0 | 0.00 | 0.00 | 9,500.0 | 0.0 | 0.0 | 0.0 | 0.00 | 0.00 | 0.00 |
| 9,600.0 | 0.00 | 0.00 | 9,600.0 | 0.0 | 0.0 | 0.0 | 0.00 | 0.00 | 0.00 |
| 9,700.0 | 0.00 | 0.00 | 9,700.0 | 0.0 | 0.0 | 0.0 | 0.00 | 0.00 | 0.00 |
| 9,800.0 | 0.00 | 0.00 | 9,800.0 | 0.0 | 0.0 | 0.0 | 0.00 | 0.00 | 0.00 |
| 9,900.0 | 0.00 | 0.00 | 9,900.0 | 0.0 | 0.0 | 0.0 | 0.00 | 0.00 | 0.00 |
| 9,903.5 | 0.00 | 0.00 | 9,903.5 | 0.0 | 0.0 | 0.0 | 0.00 | 0.00 | 0.00 |
| KOP @ 9904' | | | | | | | | | |
| 10,000.0 | 11.58 | 147.08 | 9,999.3 | -8.2 | 5.3 | 8.4 | 12.00 | 12.00 | 0.00 |
| 10,100.0 | 23.58 | 147.08 | 10,094.5 | -33.5 | 21.7 | 34.5 | 12.00 | 12.00 | 0.00 |
| 10,200.0 | 35.58 | 147.08 | 10,181.3 | -74.8 | 48.4 | 77.2 | 12.00 | 12.00 | 0.00 |
| 10,300.0 | 47.58 | 147.08 | 10,256.0 | -130.4 | 84.4 | 134.5 | 12.00 | 12.00 | 0.00 |

Planning Report

| | | | |
|------------------|-----------------------------------|-------------------------------------|--|
| Database: | Hobbs | Local Co-ordinate Reference: | Site Caper 20/29 B2BO Fed Com #1H |
| Company: | Mewbourne Oil Company | TVD Reference: | WELL @ 3666.0usft (Original Well Elev) |
| Project: | Lea County, New Mexico NAD 83 | MD Reference: | WELL @ 3666.0usft (Original Well Elev) |
| Site: | Caper 20/29 B2BO Fed Com #1H | North Reference: | Grid |
| Well: | Sec.17, T21S, R32E | Survey Calculation Method: | Minimum Curvature |
| Wellbore: | BHL: 330' FSL & 1800' FEL, Sec 29 | | |
| Design: | Design #1 | | |

Planned Survey

| Measured Depth (usft) | Inclination (°) | Azimuth (°) | Vertical Depth (usft) | +N/-S (usft) | +E/-W (usft) | Vertical Section (usft) | Dogleg Rate (°/100usft) | Build Rate (°/100usft) | Turn Rate (°/100usft) |
|---|-----------------|-------------|-----------------------|--------------|--------------|-------------------------|-------------------------|------------------------|-----------------------|
| 10,400.0 | 59.58 | 147.08 | 10,315.3 | -197.8 | 128.1 | 204.0 | 12.00 | 12.00 | 0.00 |
| 10,500.0 | 71.58 | 147.08 | 10,356.5 | -274.1 | 177.5 | 282.7 | 12.00 | 12.00 | 0.00 |
| 10,600.0 | 83.58 | 147.08 | 10,378.0 | -356.0 | 230.4 | 367.1 | 12.00 | 12.00 | 0.00 |
| 10,659.8 | 90.75 | 147.08 | 10,381.0 | -406.0 | 262.9 | 418.8 | 12.00 | 12.00 | 0.00 |
| 10,700.0 | 90.68 | 148.60 | 10,380.5 | -440.1 | 284.3 | 453.9 | 3.77 | -0.17 | 3.77 |
| 10,800.0 | 90.51 | 152.36 | 10,379.4 | -527.1 | 333.5 | 543.2 | 3.77 | -0.17 | 3.77 |
| 10,900.0 | 90.33 | 156.13 | 10,378.7 | -617.1 | 377.0 | 635.4 | 3.77 | -0.17 | 3.77 |
| 11,000.0 | 90.16 | 159.90 | 10,378.3 | -709.8 | 414.4 | 729.8 | 3.77 | -0.17 | 3.77 |
| 11,100.0 | 89.98 | 163.67 | 10,378.1 | -804.8 | 445.7 | 826.3 | 3.77 | -0.18 | 3.77 |
| 11,200.0 | 89.81 | 167.44 | 10,378.3 | -901.6 | 470.6 | 924.2 | 3.77 | -0.18 | 3.77 |
| 11,300.0 | 89.63 | 171.20 | 10,378.8 | -999.9 | 489.1 | 1,023.3 | 3.77 | -0.17 | 3.77 |
| 11,400.0 | 89.46 | 174.97 | 10,379.6 | -1,099.1 | 501.2 | 1,123.0 | 3.77 | -0.17 | 3.77 |
| 11,500.0 | 89.29 | 178.74 | 10,380.7 | -1,199.0 | 506.7 | 1,223.0 | 3.77 | -0.17 | 3.77 |
| 11,525.0 | 89.25 | 179.68 | 10,381.0 | -1,224.0 | 507.0 | 1,248.0 | 3.77 | -0.17 | 3.77 |
| LP/FTP: 330' FNL & 1800' FEL, Sec 20 | | | | | | | | | |
| 11,600.0 | 89.25 | 179.68 | 10,382.0 | -1,299.0 | 507.4 | 1,322.9 | 0.00 | 0.00 | 0.00 |
| 11,700.0 | 89.25 | 179.68 | 10,383.3 | -1,398.9 | 508.0 | 1,422.8 | 0.00 | 0.00 | 0.00 |
| 11,800.0 | 89.25 | 179.68 | 10,384.6 | -1,498.9 | 508.5 | 1,522.7 | 0.00 | 0.00 | 0.00 |
| 11,900.0 | 89.25 | 179.68 | 10,385.9 | -1,598.9 | 509.1 | 1,622.6 | 0.00 | 0.00 | 0.00 |
| 12,000.0 | 89.25 | 179.68 | 10,387.2 | -1,698.9 | 509.6 | 1,722.5 | 0.00 | 0.00 | 0.00 |
| 12,100.0 | 89.25 | 179.68 | 10,388.5 | -1,798.9 | 510.2 | 1,822.3 | 0.00 | 0.00 | 0.00 |
| 12,200.0 | 89.25 | 179.68 | 10,389.9 | -1,898.9 | 510.7 | 1,922.2 | 0.00 | 0.00 | 0.00 |
| 12,300.0 | 89.25 | 179.68 | 10,391.2 | -1,998.9 | 511.3 | 2,022.1 | 0.00 | 0.00 | 0.00 |
| 12,400.0 | 89.25 | 179.68 | 10,392.5 | -2,098.9 | 511.9 | 2,122.0 | 0.00 | 0.00 | 0.00 |
| 12,500.0 | 89.25 | 179.68 | 10,393.8 | -2,198.9 | 512.4 | 2,221.9 | 0.00 | 0.00 | 0.00 |
| 12,600.0 | 89.25 | 179.68 | 10,395.1 | -2,298.8 | 513.0 | 2,321.8 | 0.00 | 0.00 | 0.00 |
| 12,700.0 | 89.25 | 179.68 | 10,396.4 | -2,398.8 | 513.5 | 2,421.7 | 0.00 | 0.00 | 0.00 |
| 12,800.0 | 89.25 | 179.68 | 10,397.7 | -2,498.8 | 514.1 | 2,521.6 | 0.00 | 0.00 | 0.00 |
| 12,900.0 | 89.25 | 179.68 | 10,399.0 | -2,598.8 | 514.6 | 2,621.5 | 0.00 | 0.00 | 0.00 |
| 13,000.0 | 89.25 | 179.68 | 10,400.4 | -2,698.8 | 515.2 | 2,721.4 | 0.00 | 0.00 | 0.00 |
| 13,100.0 | 89.25 | 179.68 | 10,401.7 | -2,798.8 | 515.7 | 2,821.2 | 0.00 | 0.00 | 0.00 |
| 13,200.0 | 89.25 | 179.68 | 10,403.0 | -2,898.8 | 516.3 | 2,921.1 | 0.00 | 0.00 | 0.00 |
| 13,300.0 | 89.25 | 179.68 | 10,404.3 | -2,998.8 | 516.9 | 3,021.0 | 0.00 | 0.00 | 0.00 |
| 13,400.0 | 89.25 | 179.68 | 10,405.6 | -3,098.8 | 517.4 | 3,120.9 | 0.00 | 0.00 | 0.00 |
| 13,500.0 | 89.25 | 179.68 | 10,406.9 | -3,198.8 | 518.0 | 3,220.8 | 0.00 | 0.00 | 0.00 |
| 13,600.0 | 89.25 | 179.68 | 10,408.2 | -3,298.7 | 518.5 | 3,320.7 | 0.00 | 0.00 | 0.00 |
| 13,700.0 | 89.25 | 179.68 | 10,409.5 | -3,398.7 | 519.1 | 3,420.6 | 0.00 | 0.00 | 0.00 |
| 13,800.0 | 89.25 | 179.68 | 10,410.9 | -3,498.7 | 519.6 | 3,520.5 | 0.00 | 0.00 | 0.00 |
| 13,837.3 | 89.25 | 179.68 | 10,411.3 | -3,536.0 | 519.8 | 3,557.7 | 0.00 | 0.00 | 0.00 |
| PPP: 2641' FNL & 1800' FEL, Sec 20 | | | | | | | | | |
| 13,900.0 | 89.25 | 179.68 | 10,412.2 | -3,598.7 | 520.2 | 3,620.4 | 0.00 | 0.00 | 0.00 |
| 14,000.0 | 89.25 | 179.68 | 10,413.5 | -3,698.7 | 520.7 | 3,720.3 | 0.00 | 0.00 | 0.00 |
| 14,100.0 | 89.25 | 179.68 | 10,414.8 | -3,798.7 | 521.3 | 3,820.2 | 0.00 | 0.00 | 0.00 |
| 14,200.0 | 89.25 | 179.68 | 10,416.1 | -3,898.7 | 521.9 | 3,920.0 | 0.00 | 0.00 | 0.00 |
| 14,300.0 | 89.25 | 179.68 | 10,417.4 | -3,998.7 | 522.4 | 4,019.9 | 0.00 | 0.00 | 0.00 |
| 14,400.0 | 89.25 | 179.68 | 10,418.7 | -4,098.7 | 523.0 | 4,119.8 | 0.00 | 0.00 | 0.00 |
| 14,500.0 | 89.25 | 179.68 | 10,420.0 | -4,198.7 | 523.5 | 4,219.7 | 0.00 | 0.00 | 0.00 |
| 14,600.0 | 89.25 | 179.68 | 10,421.4 | -4,298.6 | 524.1 | 4,319.6 | 0.00 | 0.00 | 0.00 |
| 14,700.0 | 89.25 | 179.68 | 10,422.7 | -4,398.6 | 524.6 | 4,419.5 | 0.00 | 0.00 | 0.00 |
| 14,800.0 | 89.25 | 179.68 | 10,424.0 | -4,498.6 | 525.2 | 4,519.4 | 0.00 | 0.00 | 0.00 |
| 14,900.0 | 89.25 | 179.68 | 10,425.3 | -4,598.6 | 525.7 | 4,619.3 | 0.00 | 0.00 | 0.00 |
| 15,000.0 | 89.25 | 179.68 | 10,426.6 | -4,698.6 | 526.3 | 4,719.2 | 0.00 | 0.00 | 0.00 |
| 15,100.0 | 89.25 | 179.68 | 10,427.9 | -4,798.6 | 526.8 | 4,819.1 | 0.00 | 0.00 | 0.00 |
| 15,200.0 | 89.25 | 179.68 | 10,429.2 | -4,898.6 | 527.4 | 4,919.0 | 0.00 | 0.00 | 0.00 |

Planning Report

| | | | |
|------------------|-----------------------------------|-------------------------------------|--|
| Database: | Hobbs | Local Co-ordinate Reference: | Site Caper 20/29 B2BO Fed Com #1H |
| Company: | Mewbourne Oil Company | TVD Reference: | WELL @ 3666.0usft (Original Well Elev) |
| Project: | Lea County, New Mexico NAD 83 | MD Reference: | WELL @ 3666.0usft (Original Well Elev) |
| Site: | Caper 20/29 B2BO Fed Com #1H | North Reference: | Grid |
| Well: | Sec 17, T21S, R32E | Survey Calculation Method: | Minimum Curvature |
| Wellbore: | BHL: 330' FSL & 1800' FEL, Sec 29 | | |
| Design: | Design #1 | | |

| Planned Survey | | | | | | | | | | |
|-----------------------|-----------------|-------------|-----------------------|--------------|--------------|-------------------------|-------------------------|------------------------|-----------------------|--|
| Measured Depth (usft) | Inclination (°) | Azimuth (°) | Vertical Depth (usft) | +N/-S (usft) | +E/-W (usft) | Vertical Section (usft) | Dogleg Rate (°/100usft) | Build Rate (°/100usft) | Turn Rate (°/100usft) | |
| 15,300.0 | 89.25 | 179.68 | 10,430.5 | -4,998.6 | 528.0 | 5,018.8 | 0.00 | 0.00 | 0.00 | |
| 15,400.0 | 89.25 | 179.68 | 10,431.9 | -5,098.6 | 528.5 | 5,118.7 | 0.00 | 0.00 | 0.00 | |
| 15,500.0 | 89.25 | 179.68 | 10,433.2 | -5,198.6 | 529.1 | 5,218.6 | 0.00 | 0.00 | 0.00 | |
| 15,600.0 | 89.25 | 179.68 | 10,434.5 | -5,298.5 | 529.6 | 5,318.5 | 0.00 | 0.00 | 0.00 | |
| 15,700.0 | 89.25 | 179.68 | 10,435.8 | -5,398.5 | 530.2 | 5,418.4 | 0.00 | 0.00 | 0.00 | |
| 15,800.0 | 89.25 | 179.68 | 10,437.1 | -5,498.5 | 530.7 | 5,518.3 | 0.00 | 0.00 | 0.00 | |
| 15,900.0 | 89.25 | 179.68 | 10,438.4 | -5,598.5 | 531.3 | 5,618.2 | 0.00 | 0.00 | 0.00 | |
| 16,000.0 | 89.25 | 179.68 | 10,439.7 | -5,698.5 | 531.8 | 5,718.1 | 0.00 | 0.00 | 0.00 | |
| 16,100.0 | 89.25 | 179.68 | 10,441.0 | -5,798.5 | 532.4 | 5,818.0 | 0.00 | 0.00 | 0.00 | |
| 16,200.0 | 89.25 | 179.68 | 10,442.4 | -5,898.5 | 533.0 | 5,917.9 | 0.00 | 0.00 | 0.00 | |
| 16,300.0 | 89.25 | 179.68 | 10,443.7 | -5,998.5 | 533.5 | 6,017.7 | 0.00 | 0.00 | 0.00 | |
| 16,400.0 | 89.25 | 179.68 | 10,445.0 | -6,098.5 | 534.1 | 6,117.6 | 0.00 | 0.00 | 0.00 | |
| 16,500.0 | 89.25 | 179.68 | 10,446.3 | -6,198.5 | 534.6 | 6,217.5 | 0.00 | 0.00 | 0.00 | |
| 16,600.0 | 89.25 | 179.68 | 10,447.6 | -6,298.4 | 535.2 | 6,317.4 | 0.00 | 0.00 | 0.00 | |
| 16,700.0 | 89.25 | 179.68 | 10,448.9 | -6,398.4 | 535.7 | 6,417.3 | 0.00 | 0.00 | 0.00 | |
| 16,800.0 | 89.25 | 179.68 | 10,450.2 | -6,498.4 | 536.3 | 6,517.2 | 0.00 | 0.00 | 0.00 | |
| 16,900.0 | 89.25 | 179.68 | 10,451.5 | -6,598.4 | 536.8 | 6,617.1 | 0.00 | 0.00 | 0.00 | |
| 17,000.0 | 89.25 | 179.68 | 10,452.8 | -6,698.4 | 537.4 | 6,717.0 | 0.00 | 0.00 | 0.00 | |
| 17,100.0 | 89.25 | 179.68 | 10,454.2 | -6,798.4 | 538.0 | 6,816.9 | 0.00 | 0.00 | 0.00 | |
| 17,200.0 | 89.25 | 179.68 | 10,455.5 | -6,898.4 | 538.5 | 6,916.8 | 0.00 | 0.00 | 0.00 | |
| 17,300.0 | 89.25 | 179.68 | 10,456.8 | -6,998.4 | 539.1 | 7,016.7 | 0.00 | 0.00 | 0.00 | |
| 17,400.0 | 89.25 | 179.68 | 10,458.1 | -7,098.4 | 539.6 | 7,116.5 | 0.00 | 0.00 | 0.00 | |
| 17,500.0 | 89.25 | 179.68 | 10,459.4 | -7,198.4 | 540.2 | 7,216.4 | 0.00 | 0.00 | 0.00 | |
| 17,600.0 | 89.25 | 179.68 | 10,460.7 | -7,298.3 | 540.7 | 7,316.3 | 0.00 | 0.00 | 0.00 | |
| 17,700.0 | 89.25 | 179.68 | 10,462.0 | -7,398.3 | 541.3 | 7,416.2 | 0.00 | 0.00 | 0.00 | |
| 17,800.0 | 89.25 | 179.68 | 10,463.3 | -7,498.3 | 541.8 | 7,516.1 | 0.00 | 0.00 | 0.00 | |
| 17,900.0 | 89.25 | 179.68 | 10,464.7 | -7,598.3 | 542.4 | 7,616.0 | 0.00 | 0.00 | 0.00 | |
| 18,000.0 | 89.25 | 179.68 | 10,466.0 | -7,698.3 | 543.0 | 7,715.9 | 0.00 | 0.00 | 0.00 | |
| 18,100.0 | 89.25 | 179.68 | 10,467.3 | -7,798.3 | 543.5 | 7,815.8 | 0.00 | 0.00 | 0.00 | |
| 18,200.0 | 89.25 | 179.68 | 10,468.6 | -7,898.3 | 544.1 | 7,915.7 | 0.00 | 0.00 | 0.00 | |
| 18,300.0 | 89.25 | 179.68 | 10,469.9 | -7,998.3 | 544.6 | 8,015.6 | 0.00 | 0.00 | 0.00 | |
| 18,400.0 | 89.25 | 179.68 | 10,471.2 | -8,098.3 | 545.2 | 8,115.4 | 0.00 | 0.00 | 0.00 | |
| 18,500.0 | 89.25 | 179.68 | 10,472.5 | -8,198.2 | 545.7 | 8,215.3 | 0.00 | 0.00 | 0.00 | |
| 18,600.0 | 89.25 | 179.68 | 10,473.8 | -8,298.2 | 546.3 | 8,315.2 | 0.00 | 0.00 | 0.00 | |
| 18,700.0 | 89.25 | 179.68 | 10,475.2 | -8,398.2 | 546.8 | 8,415.1 | 0.00 | 0.00 | 0.00 | |
| 18,800.0 | 89.25 | 179.68 | 10,476.5 | -8,498.2 | 547.4 | 8,515.0 | 0.00 | 0.00 | 0.00 | |
| 18,900.0 | 89.25 | 179.68 | 10,477.8 | -8,598.2 | 547.9 | 8,614.9 | 0.00 | 0.00 | 0.00 | |
| 19,000.0 | 89.25 | 179.68 | 10,479.1 | -8,698.2 | 548.5 | 8,714.8 | 0.00 | 0.00 | 0.00 | |
| 19,100.0 | 89.25 | 179.68 | 10,480.4 | -8,798.2 | 549.1 | 8,814.7 | 0.00 | 0.00 | 0.00 | |
| 19,200.0 | 89.25 | 179.68 | 10,481.7 | -8,898.2 | 549.6 | 8,914.6 | 0.00 | 0.00 | 0.00 | |
| 19,300.0 | 89.25 | 179.68 | 10,483.0 | -8,998.2 | 550.2 | 9,014.5 | 0.00 | 0.00 | 0.00 | |
| 19,400.0 | 89.25 | 179.68 | 10,484.3 | -9,098.2 | 550.7 | 9,114.4 | 0.00 | 0.00 | 0.00 | |
| 19,500.0 | 89.25 | 179.68 | 10,485.7 | -9,198.1 | 551.3 | 9,214.2 | 0.00 | 0.00 | 0.00 | |
| 19,600.0 | 89.25 | 179.68 | 10,487.0 | -9,298.1 | 551.8 | 9,314.1 | 0.00 | 0.00 | 0.00 | |
| 19,700.0 | 89.25 | 179.68 | 10,488.3 | -9,398.1 | 552.4 | 9,414.0 | 0.00 | 0.00 | 0.00 | |
| 19,800.0 | 89.25 | 179.68 | 10,489.6 | -9,498.1 | 552.9 | 9,513.9 | 0.00 | 0.00 | 0.00 | |
| 19,900.0 | 89.25 | 179.68 | 10,490.9 | -9,598.1 | 553.5 | 9,613.8 | 0.00 | 0.00 | 0.00 | |
| 20,000.0 | 89.25 | 179.68 | 10,492.2 | -9,698.1 | 554.1 | 9,713.7 | 0.00 | 0.00 | 0.00 | |
| 20,100.0 | 89.25 | 179.68 | 10,493.5 | -9,798.1 | 554.6 | 9,813.6 | 0.00 | 0.00 | 0.00 | |
| 20,200.0 | 89.25 | 179.68 | 10,494.8 | -9,898.1 | 555.2 | 9,913.5 | 0.00 | 0.00 | 0.00 | |
| 20,300.0 | 89.25 | 179.68 | 10,496.2 | -9,998.1 | 555.7 | 10,013.4 | 0.00 | 0.00 | 0.00 | |
| 20,400.0 | 89.25 | 179.68 | 10,497.5 | -10,098.1 | 556.3 | 10,113.3 | 0.00 | 0.00 | 0.00 | |
| 20,500.0 | 89.25 | 179.68 | 10,498.8 | -10,198.0 | 556.8 | 10,213.2 | 0.00 | 0.00 | 0.00 | |
| 20,600.0 | 89.25 | 179.68 | 10,500.1 | -10,298.0 | 557.4 | 10,313.0 | 0.00 | 0.00 | 0.00 | |

Planning Report

| | | | |
|------------------|-----------------------------------|-------------------------------------|--|
| Database: | Hobbs | Local Co-ordinate Reference: | Site Caper 20/29 B2BO Fed Com #1H |
| Company: | Mewbourne Oil Company | TVD Reference: | WELL @ 3666.0usft (Original Well Elev) |
| Project: | Lea County, New Mexico NAD 83 | MD Reference: | WELL @ 3666.0usft (Original Well Elev) |
| Site: | Caper 20/29 B2BO Fed Com #1H | North Reference: | Grid |
| Well: | Sec 17, T21S, R32E | Survey Calculation Method: | Minimum Curvature |
| Wellbore: | BHL: 330' FSL & 1800' FEL, Sec 29 | | |
| Design: | Design #1 | | |

| Planned Survey | | | | | | | | | | |
|-----------------------------------|-----------------|-------------|-----------------------|--------------|--------------|-------------------------|-------------------------|------------------------|-----------------------|--|
| Measured Depth (usft) | Inclination (°) | Azimuth (°) | Vertical Depth (usft) | +N/-S (usft) | +E/-W (usft) | Vertical Section (usft) | Dogleg Rate (°/100usft) | Build Rate (°/100usft) | Turn Rate (°/100usft) | |
| 20,700.0 | 89.25 | 179.68 | 10,501.4 | -10,398.0 | 557.9 | 10,412.9 | 0.00 | 0.00 | 0.00 | |
| 20,800.0 | 89.25 | 179.68 | 10,502.7 | -10,498.0 | 558.5 | 10,512.8 | 0.00 | 0.00 | 0.00 | |
| 20,900.0 | 89.25 | 179.68 | 10,504.0 | -10,598.0 | 559.1 | 10,612.7 | 0.00 | 0.00 | 0.00 | |
| 21,000.0 | 89.25 | 179.68 | 10,505.3 | -10,698.0 | 559.6 | 10,712.6 | 0.00 | 0.00 | 0.00 | |
| 21,100.0 | 89.25 | 179.68 | 10,506.7 | -10,798.0 | 560.2 | 10,812.5 | 0.00 | 0.00 | 0.00 | |
| 21,200.0 | 89.25 | 179.68 | 10,508.0 | -10,898.0 | 560.7 | 10,912.4 | 0.00 | 0.00 | 0.00 | |
| 21,300.0 | 89.25 | 179.68 | 10,509.3 | -10,998.0 | 561.3 | 11,012.3 | 0.00 | 0.00 | 0.00 | |
| 21,400.0 | 89.25 | 179.68 | 10,510.6 | -11,098.0 | 561.8 | 11,112.2 | 0.00 | 0.00 | 0.00 | |
| 21,431.0 | 89.25 | 179.68 | 10,511.0 | -11,129.0 | 562.0 | 11,143.2 | 0.00 | 0.00 | 0.00 | |
| BHL: 330' FSL & 1800' FEL, Sec 29 | | | | | | | | | | |

| Design Targets | | | | | | | | | |
|--|---------------|--------------|------------|--------------|--------------|-----------------|----------------|------------------|-------------------|
| Target Name | Dip Angle (°) | Dip Dir. (°) | TVD (usft) | +N/-S (usft) | +E/-W (usft) | Northing (usft) | Easting (usft) | Latitude | Longitude |
| SL: 900' FSL & 2300' FE - hit/miss target - Shape - Point | 0.00 | 0.01 | 0.0 | 0.0 | 0.0 | 536,727.00 | 737,965.00 | 32° 28' 26.078 N | 103° 41' 44.631 W |
| KOP @ 9904' - plan hits target center - Point | 0.00 | 0.01 | 9,903.5 | 0.0 | 0.0 | 536,727.00 | 737,965.00 | 32° 28' 26.078 N | 103° 41' 44.631 W |
| LP/FTP: 330' FNL & 180 - plan hits target center - Point | 0.00 | 0.00 | 10,381.0 | -1,224.0 | 507.0 | 535,503.00 | 738,472.00 | 32° 28' 13.937 N | 103° 41' 38.799 W |
| PPP: 2641' FNL & 1800' - plan hits target center - Point | 0.00 | 0.00 | 10,411.3 | -3,536.0 | 519.8 | 533,191.00 | 738,484.83 | 32° 27' 51.059 N | 103° 41' 38.810 W |
| BHL: 330' FSL & 1800' F - plan hits target center - Point | 0.00 | 0.01 | 10,511.0 | -11,129.0 | 562.0 | 525,598.00 | 738,527.00 | 32° 26' 35.923 N | 103° 41' 38.849 W |