

Submit 3 Copies To Appropriate District Office
District I
1625 N. French Dr., Hobbs, NM 88240
District II
1301 W. Grand Ave., Artesia, NM 88210
District III
1000 Rio Brazos Rd., Aztec, NM 87410
District IV
1220 S. St. Francis Dr., Santa Fe, NM 87505

State of New Mexico
Energy, Minerals and Natural Resources

Form C-103
May 27, 2004

OIL CONSERVATION DIVISION
1220 South St. Francis Dr.
Santa Fe, NM 87505

| |
|-----------------------------------------------------------------------------------------------------|
| WELL API NO. 30-025-38642 |
| 5. Indicate Type of Lease STATE <input checked="" type="checkbox"/> FEE <input type="checkbox"/> |
| 6. State Oil & Gas Lease No. |
| 7. Lease Name or Unit Agreement Name Silver Oak |
| 8. Well Number 1 |
| 9. OGRID Number 372098 |
| 10. Pool name or Wildcat Scharbi; Bone Spring |

SUNDRY NOTICES AND REPORTS ON WELL
(DO NOT USE THIS FORM FOR PROPOSALS TO DRILL OR TO DEEPEN OR PLUG BACK TO A DIFFERENT RESERVOIR. USE "APPLICATION FOR PERMIT" (FORM C-101) FOR SUCH PROPOSALS.)

1. Type of Well: Oil Well ☐ Gas Well ☒ Other

2. Name of Operator
Marathon Oil Permian, LLC

3. Address of Operator
5555 San Felipe Houston, TX 77056

4. Well Location

Unit Letter Lot 2 : 660 feet from the N line and 1980 feet from the E line

Section 6 Township 19S Range 35E NMPM County LEA

11. Elevation (Show whether DR, RKB, RT, GR, etc.)
3938 G.R.

Pit or Below-grade Tank Application ☐ or Closure ☐

Pit type Depth to Groundwater Distance from nearest fresh water well Distance from nearest surface water

Pit Liner Thickness: mil Below-Grade Tank: Volume bbls; Construction Material

12. Check Appropriate Box to Indicate Nature of Notice, Report or Other Data

NOTICE OF INTENTION TO:

PERFORM REMEDIAL WORK ☐ PLUG AND ABANDON ☒
TEMPORARILY ABANDON ☐ CHANGE PLANS ☐
PULL OR ALTER CASING ☐ MULTIPLE COMPL ☐

OTHER: ☐

SUBSEQUENT

REMEDIAL WORK
COMMENCE DRILLING OPNS
CASING/CEMENT JOB

OTHER: ☐

INT TO P&A ☒
P&A NR
P&A R

13. Describe proposed or completed operations. (Clearly state all pertinent details, and give pertinent dates, including estimated date of starting any proposed work). SEE RULE 1103. For Multiple Completions: Attach wellbore diagram of proposed completion or recompletion.

- 25sx @ 11,200' - 11,100' Tag.
- 5 1/2 CIBP @ 9450' w/25sx. @ 9572' WOC TAG
- 5 1/2 CIBP @ 6600' w/25sx. @ 6630' WOC TAG Pressure test csg.
- 25sx 4682' - 4582'.
- 25 sx 3750' - 3400' Tag. 25sx @ 1850' (T.SALT)
- 60sx 475' surf. Verify. Install DHM.

Closed loop.
All fluids to licensed facility.

NOTIFY OCD 24 HOURS PRIOR TO
BEGINNING PLUGGING OPERATIONS

I hereby certify that the information above is true and complete to the best of my knowledge and belief. I further certify that any pit or below-grade tank has been/will be constructed or closed according to NMOCD guidelines ☐, a general permit ☐ or an (attached) alternative OCD-approved plan ☐.

SIGNATURE Brody Pinkerton TITLE Agent DATE 8-22-18

Type or print name Brody Pinkerton E-mail address: Brody@maverickwellpluggers.com Telephone No. 432-458-3780

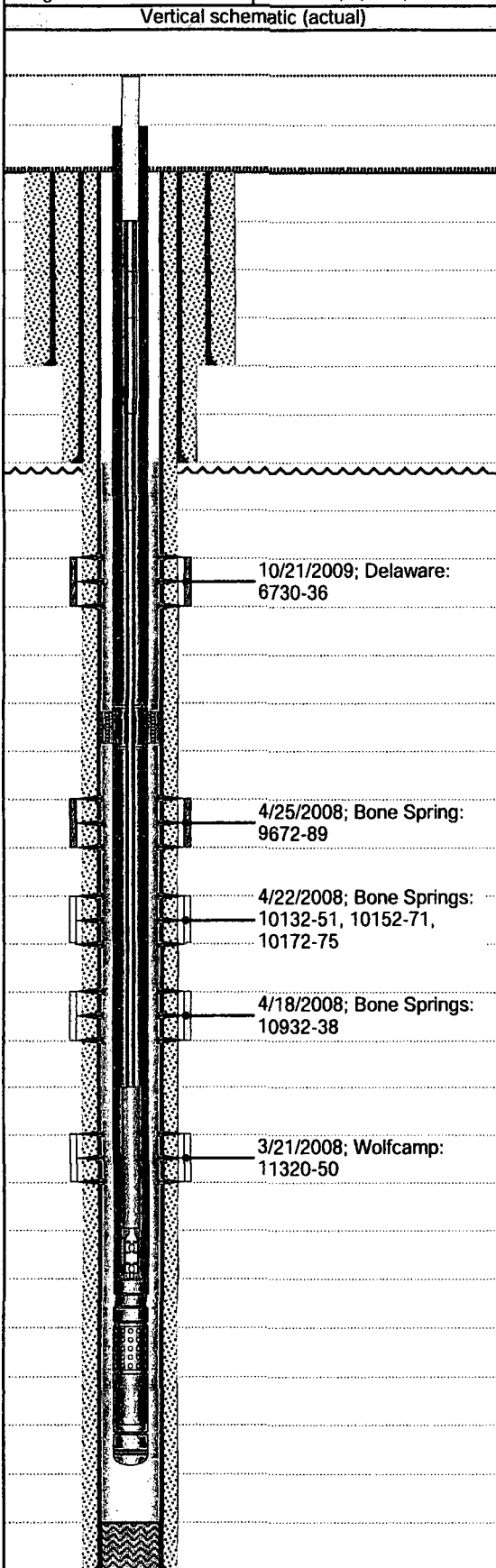
For State Use Only

APPROVED BY: Mark Whitaker TITLE P.E.S. DATE 08/23/2018

Conditions of Approval (if any):

C103 INTENT TO P&A EXPIRES
1 YEAR FROM DATE OF APPROVAL

| | | | | |
|---------------------------------------------|------------------------------------------------------------------|--------------------------------------|-------------------------------------------|-------------------------------------|
| Well Name SILVER OAK 1 | API/ I/O UWI 3002538642 | Orig KB Elev (ft) 3,964.00 | Ground Elevation (ft) 3,938.00 | Drilling Rig Spud Date |
| Legal Survey Type Congressional Location | Qtr/ Qtr, Block, Sec, Town, Range C NW NE, 6, 35E, 19S | N/S Dist (ft) 660.0 | N/... E/W Dist (ft) FNL 1,980.0 | E/... County FEL LEA |
| | | | | State/Province NEW MEXICO |



| Wellbore Sections | | |
|-------------------|-----------|----------------|
| Section Des | Size (in) | Act Btm (ftKB) |
| Surface | 17 1/2 | 425.0 |
| Intermediate 1 | 11 | 3,450.0 |
| Production 1 | 7 7/8 | 11,500.0 |

| Casing Strings | | | |
|----------------|-----------|------------------|-------------------------------------|
| Csg Des | Run Date | Set Depth (ftKB) | Com |
| Surface | 1/16/2008 | 425.0 | 13-3/8" 48# H-40 STC |
| Intermediate 1 | 1/22/2008 | 3,450.0 | 8-5/8" 32# J-55 LTC |
| Production 1 | 2/14/2008 | 11,500.0 | 5.5" 17# N-80 LTC (DV Tool @ 9029') |

| Cement Stages | | | | | |
|----------------------------|------------|-------|------------|------------|-------------------------------------------|
| Des | Start Date | Stg # | Top (ftKB) | Btm (ftKB) | Com |
| Surface Casing Cement | 1/16/2008 | 1 | 26.0 | 425.0 | Tail: 440 sx TOC @ surf |
| Intermediate Casing Cement | 1/23/2008 | 1 | 26.0 | 3,450.0 | Lead: 900 sx, Tail: 200sx TOC @ surf |
| Cement Plug | 2/14/2008 | 1 | 11,475.0 | 11,500.0 | D/O to 11406' PBTD |
| Production Casing Cement | 2/14/2008 | 1 | 9,029.0 | 11,500.0 | Tail: 600 sx TOC @ 9029' |
| Production Casing Cement | 2/14/2008 | 2 | 26.0 | 9,029.0 | Lead: 1750 sx, Tail: 200 sx TOC @ surf |

| Perforations | | | |
|--------------|--------------------------------------------|----------------------|--------------------|
| Date | Com | Shot Dens (shots/ft) | Entered Shot Total |
| 3/21/2008 | Wolfcamp: 11320-50 | 2.0 | 60 |
| 4/18/2008 | Bone Springs: 10932-38 | 4.0 | 28 |
| 4/22/2008 | Bone Springs: 10132-51, 10152-71, 10172-75 | 2.0 | 80 |
| 4/25/2008 | Bone Spring: 9672-89 | 2.0 | 36 |
| 10/21/2009 | Delaware: 6730-36 | 6.0 | 36 |

| Stimulations Summary | | |
|----------------------|------------|--------------------------------------------------------------------------------------------------------------------------------------------------------------------------------------------------------------------------------|
| Type | Start Date | Comment |
| ACID | 3/22/2008 | (1) Acid: 5k gal 15% NEFE [11320'-11350'] (2) Acid: 10k gal 15% NEFE [11320'-11350'] (3) Acid: 1.5k gal 15% NEFE [10932'-10938'] (4) Acid: 5k gal 15% NEFE [10132'-10175'] (5) Acid: 5k gal 15% NEFE [9672'-9689'] |
| FRAC | 5/2/2008 | (1) Frac: 67k gal Lightning 3000 + 36.9K# 18/40 Versaprop + 4.9k# 16/30 Super LC [9672'-9689'] |
| FRAC | 10/30/2009 | (1) Frac: 37.3k gal Viking 2500 XL gel + 25k# 20/40 white sand [6730'-6736'] |

| Tubing Strings | | |
|----------------|------------------|---------------------------------------------|
| Run Date | Set Depth (ftKB) | Com |
| 3/25/2011 | 11,451.7 | 2-7/8" 6.5# L-80, TAC @ 9475', EOT @ 11452' |

Prior to PSA

| | | | | |
|---------------------------------------------|----------------------------------------------------------|-------------------------------|-----------------------------------|------------------------------|
| Well Name SILVER OAK 1 | API/ IFO UWI 3002538642 | Orig KB Elev (ft) 3,964.00 | Ground Elevation (ft) 3,938.00 | Drilling Rig Spud Date |
| Legal Survey Type Congressional Location | Oil/Oil, Block, Sec, Town, Range C NW NE, 6, 35E, 19S | N/S Dist (ft) 660.0 | N/E Dist (ft) FNL 1,980.0 | E/W Dist (ft) FEL LEA |
| | | County LEA | | State/Province NEW MEXICO |

Vertical schematic (actual)

Wellbore Sections

| Section Des | Size (in) | Act Btm (ftKB) |
|----------------|-----------|----------------|
| Surface | 17 1/2 | 425.0 |
| Intermediate 1 | 11 | 3,450.0 |
| Production 1 | 7 7/8 | 11,500.0 |

Casing Strings

| Csg Des | Run Date | Set Depth (ftKB) | Com |
|----------------|-----------|------------------|-------------------------------------|
| Surface | 1/16/2008 | 425.0 | 13-3/8" 48# H-40 STC |
| Intermediate 1 | 1/22/2008 | 3,450.0 | 8-5/8" 32# J-55 LTC |
| Production 1 | 2/14/2008 | 11,500.0 | 5.5" 17# N-80 LTC (DV Tool @ 9029') |

Cement Stages

| Des | Start Date | Stg # | Top (ftKB) | Btm (ftKB) | Com |
|----------------------------|------------|-------|------------|------------|----------------------------------------|
| Surface Casing Cement | 1/16/2008 | 1 | 26.0 | 425.0 | Tail: 440 sx TOC @ surf |
| Intermediate Casing Cement | 1/23/2008 | 1 | 26.0 | 3,450.0 | Lead: 900 sx, Tail: 200sx TOC @ surf |
| Cement Plug | 2/14/2008 | 1 | 11,475.0 | 11,500.0 | D/O to 11406' PBDT |
| Production Casing Cement | 2/14/2008 | 1 | 9,029.0 | 11,500.0 | Tail: 600 sx TOC @ 9029' |
| Production Casing Cement | 2/14/2008 | 2 | 26.0 | 9,029.0 | Lead: 1750 sx, Tail: 200 sx TOC @ surf |

Perforations

| Date | Com | Shot Dens (shots/ft) | Entered Shot Total |
|------------|--------------------------------------------|----------------------|--------------------|
| 3/21/2008 | Wolfcamp: 11320-50 | 2.0 | 60 |
| 4/18/2008 | Bone Springs: 10932-38 | 4.0 | 28 |
| 4/22/2008 | Bone Springs: 10132-51, 10152-71, 10172-75 | 2.0 | 80 |
| 4/25/2008 | Bone Spring: 9672-89 | 2.0 | 36 |
| 10/21/2009 | Delaware: 6730-36 | 6.0 | 36 |

Stimulations Summary

| Type | Start Date | Comment |
|------|------------|--------------------------------------------------------------------------------------------------------------------------------------------------------------------------------------------------------------------------------|
| ACID | 3/22/2008 | (1) Acid: 5k gal 15% NEFE [11320'-11350'] (2) Acid: 10k gal 15% NEFE [11320'-11350'] (3) Acid: 1.5k gal 15% NEFE [10932'-10938'] (4) Acid: 5k gal 15% NEFE [10132'-10175'] (5) Acid: 5k gal 15% NEFE [9672'-9689'] |
| FRAC | 5/2/2008 | (1) Frac: 67k gal Lightning 3000 + 36.9K# 18/40 Versaprop + 4.9k# 16/30 Super LC [9672'-9689'] |
| FRAC | 10/30/2009 | (1) Frac: 37.3k gal Viking 2500 XL gel + 25k# 20/40 white sand [6730'-6736'] |

Tubing Strings

| Run Date | Set Depth (ftKB) | Com |
|-----------|------------------|---------------------------------------------|
| 3/25/2011 | 11,451.7 | 2-7/8" 6.5# L-80, TAC @ 9475', EOT @ 11452' |

AFTER P&A