

Submit 1 Copy To Appropriate District Office  
District I - (575) 393-6161  
1625 N. French Dr., Hobbs, NM 88240  
District II - (575) 748-1283  
811 S. First St., Artesia, NM 88210  
District III - (505) 334-6178  
1000 Rio Brazos Rd., Aztec, NM 87410  
District IV - (505) 476-3460  
1220 S. St. Francis Dr., Santa Fe, NM 87505

State of New Mexico  
Energy, Minerals and Natural Resources

OIL CONSERVATION DIVISION  
1220 South St. Francis Dr.  
Santa Fe, NM 87505

Form C-103  
Revised July 18, 2013

WELL API NO. 30-025-29717
5. Indicate Type of Lease STATE <input checked="" type="checkbox"/> FEE <input type="checkbox"/>
6. State Oil & Gas Lease No.
7. Lease Name or Unit Agreement Name MADERA 32 STATE
8. Well Number 3
9. OGRID Number 7377
10. Pool name or Wildcat PITCHFORK RANCH; ATOKA (GAS)
11. Elevation (Show whether DR, RKB, RT, GR, etc.) 3439' GR

SUNDRY NOTICES AND REPORTS ON WELLS  
(DO NOT USE THIS FORM FOR PROPOSALS TO DRILL OR TO DEEPEN OR PLUG BACK TO A DIFFERENT RESERVOIR. USE "APPLICATION FOR PERMIT" (FORM C-101) FOR SUCH PROPOSALS.)

1. Type of Well: Oil Well ☒ Gas Well ☐ Other

2. Name of Operator  
EOG RESOURCES INC

3. Address of Operator  
PO BOX 2267 MIDLAND, TX 79702

4. Well Location  
Unit Letter K : 1650 feet from the SOUTH line and 2310 feet from the WEST line  
Section 32 Township 24S Range 34E NMPM County LEA

12. Check Appropriate Box to Indicate Nature of Notice, Report or Other Data

NOTICE OF INTENTION TO:

PERFORM REMEDIAL WORK ☐ PLUG AND ABANDON ☒  
TEMPORARILY ABANDON ☐ CHANGE PLANS ☐  
PULL OR ALTER CASING ☐ MULTIPLE COMPL ☐  
DOWNHOLE COMMINGLE ☐  
CLOSED-LOOP SYSTEM ☐  
OTHER: ☐

SUBSEQUENT REF

REMEDIAL WORK ☐  
COMMENCE DRILLING OPNS. ☐  
CASING/CEMENT JOB ☐

INT TO P&A Pm  
P&A NR  
P&A R

13. Describe proposed or completed operations. (Clearly state all pertinent details, and give pertinent dates, including estimated date of starting any proposed work). SEE RULE 19.15.7.14 NMAC. For Multiple Completions: Attach wellbore diagram of proposed completion or recompletion.

EOG proposes to P&A this wellbore ASAP using the attached procedure:

NOTIFY OCD 24 HOURS PRIOR TO  
BEGINNING PLUGGING OPERATIONS

Spud Date:

12/6/1986

Rig Release Date:

I hereby certify that the information above is true and complete to the best of my knowledge and belief.

SIGNATURE Kay Maddox TITLE Regulatory Analyst DATE 08/28/2018

Type or print name Kay Maddox E-mail address: kay\_maddox@eogresources.com PHONE: 432-686-3658

For State Use Only

APPROVED BY: Mah White TITLE P.E.S. DATE 08/30/2018  
Conditions of Approval (if any):

C103 INTENT TO P&A EXPIRES  
1 YEAR FROM DATE OF APPROVAL



---

## Madera 32 State #3 – P&A Procedure

API# 30-025-29717

Sect 32, T24S, R34E

1,650' FSL & 2,310' FWL

LEA, NM

---

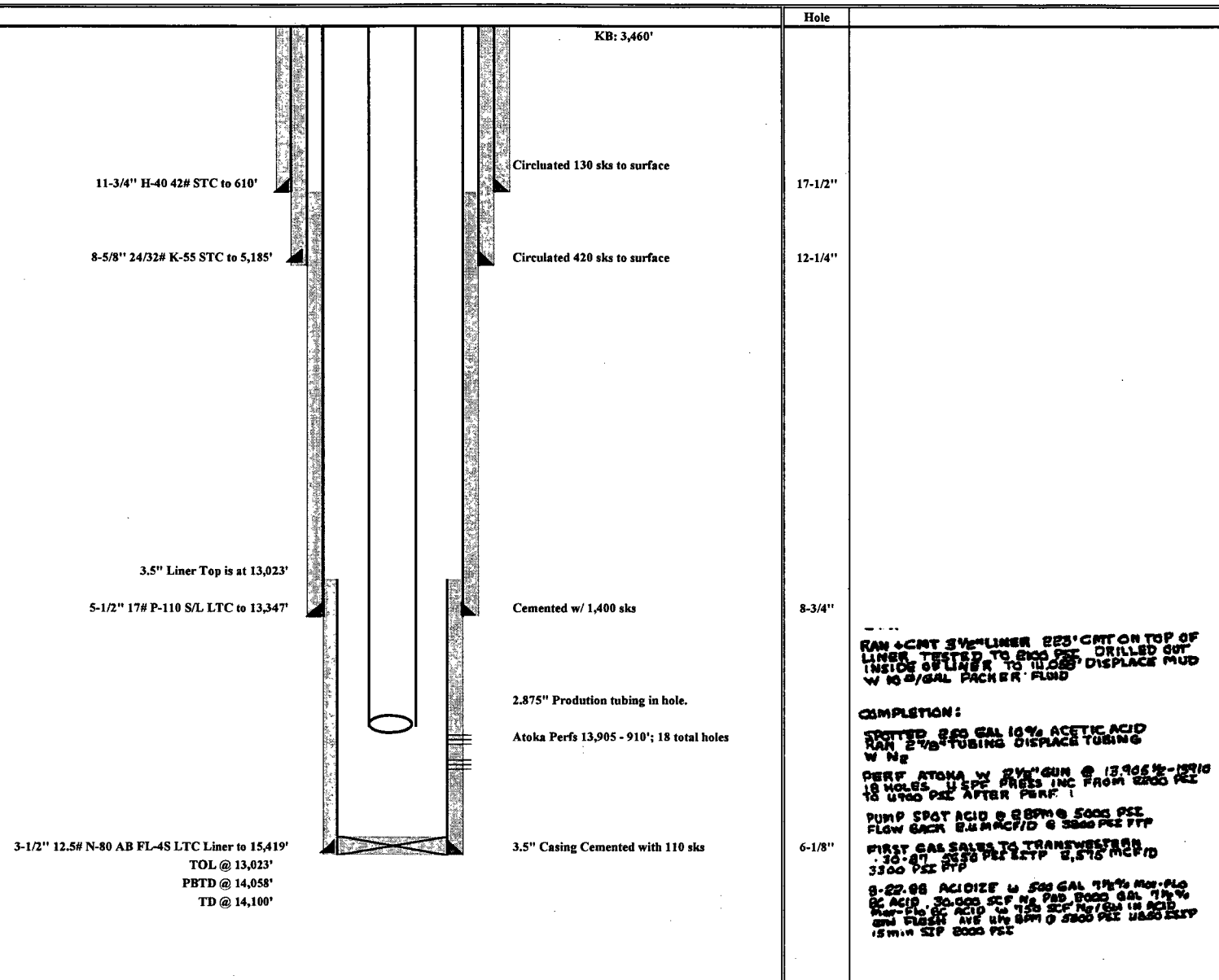
*25x OR SPOT ID 5x w/ tag.*

1. Set a 3-1/2" CIBP @ 13,860' & dump <sup>*25*</sup> sk Class H on top of CIBP to cover the existing Atoka perforations. *ball*
2. Circulate well with 9 ppg mud. Pressure test the casing.
3. Spot a 50 sk Class H plug from 13,400' to 12,970' to cover the 5.5" shoe x 3.5" Liner Top; WOC 8 hrs and tag.
4. Spot a 40 sk Class H plug at 12,850' to cover the Wolfcamp top; WOC 8 hrs. & tag.
5. Spot 40 sk Class H plug @ 9,230' to cover the Top of the Bone Spring Interval; WOC 8 hrs. & tag.
6. Spot a 40 sk Class H plug at 7,200' (spacer plug); WOC & tag.
7. Perf and squeeze a 40 sk Class C plug @ 5,300' to cover the Delaware & Canyon Sands; WOC 4 hrs. & tag at ~~5,300'~~ *5100'* or better.
8. Perf and Squeeze 50sx Class C @ 1,100' to cover the inside and outside of the 5.5" casing to the top of the salt; WOC 4 hrs. & tag.
9. Perf and Squeeze 5.5" casing at 650' and squeeze Class C cement to surface.
10. Cut off WH 3 feet below surface; verify that there is cement to surface
11. Weld on P&A marker. Cut off anchors three feet below surface. Clean location.

API# 30-025-29717  
Sect 32, T24S, R34E  
1,650' FSL & 2,310' FWL  
LEA. NM



SPUD 12/1/1986  
COMP 1/21/1987

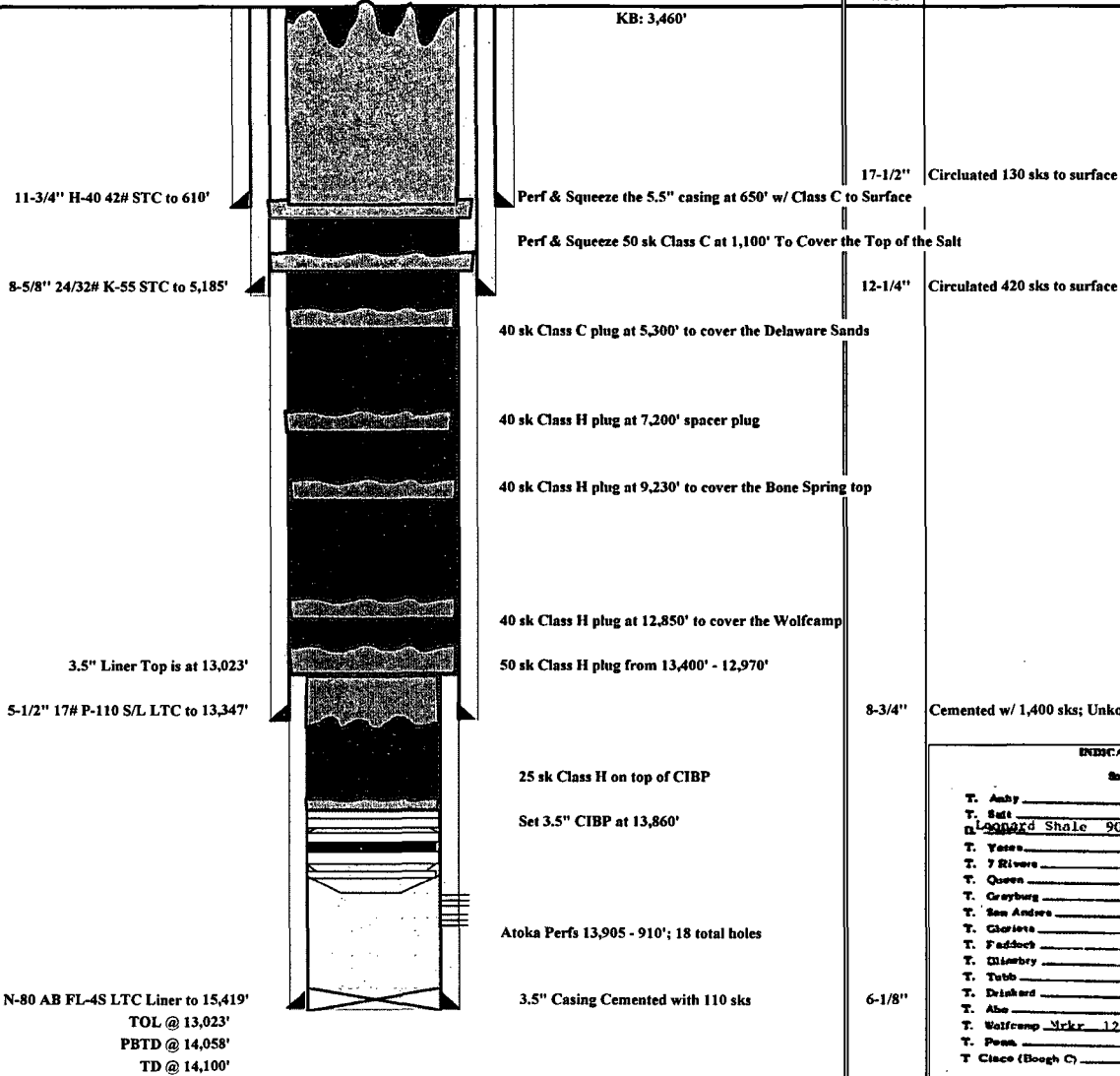


# Madera 32 State #3

API# 30-025-29717  
Sect 32, T24S, R34E  
1,650' FSL & 2,310' FWL  
LEA, NM



SPUD 12/1/1986  
COMP 1/21/1987



INDICATE FORMATION TOPS IN CONFORMANCE			
Southeastern New Mexico			
T. Ancho	T. Cherry Canyon	6272	T
T. Salt	T. Strawn		T
T. Leonard Shale	T. Atoka	13770	T
T. Yates	T. Atoka Sand	13905	T
T. Y Rivers	T. Devonian		T
T. Queen	T. Silurian		T
T. Grayburg	T. Montoya		T
T. San Andres	T. Simpson		T
T. Glorietta	T. McKee		T
T. Faddox	T. Effenburger		T
T. Olmsted	T. G. Wash		T
T. Tubo	T. Grenite		T
T. Driskard	T. Delaware Sand	5304	T
T. Albo	T. Bone Springs Lime	9237	T
T. Wolfcamp	T. Int. BS Sand	10043	T
T. Penn	T. Strawn Lime	13612	T
T. Clinco (Booth C)	T.		T
No. 1, from Atoka 13905 to 13910 OIL OR GAS S			