

District I
1625 N. French Dr., Hobbs, NM 88240
Phone: (575) 393-6161 Fax: (575) 393-0720
District II
811 S. First St., Artesia, NM 88210
Phone: (575) 748-1283 Fax: (575) 748-9720
District III
1000 Rio Brazos Road, Aztec, NM 87410
Phone: (505) 334-6178 Fax: (505) 334-6170
District IV
1220 S. St. Francis Dr., Santa Fe, NM 87505
Phone: (505) 476-3460 Fax: (505) 476-3462

State of New Mexico
Energy, Minerals & Natural Resources
Department
OIL CONSERVATION DIVISION
1220 South St. Francis Dr.
Santa Fe, NM 87505

HOBBS OCD

AUG 29 2018

RECEIVED

FORM C-102
Revised August 1, 2011
Submit one copy to appropriate
District Office
AMENDED REPORT

WELL LOCATION AND ACREAGE DEDICATION PLAT

| | | |
|---|---|---|
| ¹ API Number 30-025-43878 | ² Pool Code 98094 | ³ Pool Name Bobcat Draw; Upper Wolfcamp |
| ⁴ Property Code 38481 | ⁵ Property Name CABALLO 23 FED | ⁶ Well Number #704H |
| ⁷ OGRID No. 7377 | ⁸ Operator Name EOG RESOURCES, INC. | ⁹ Elevation 3341' |

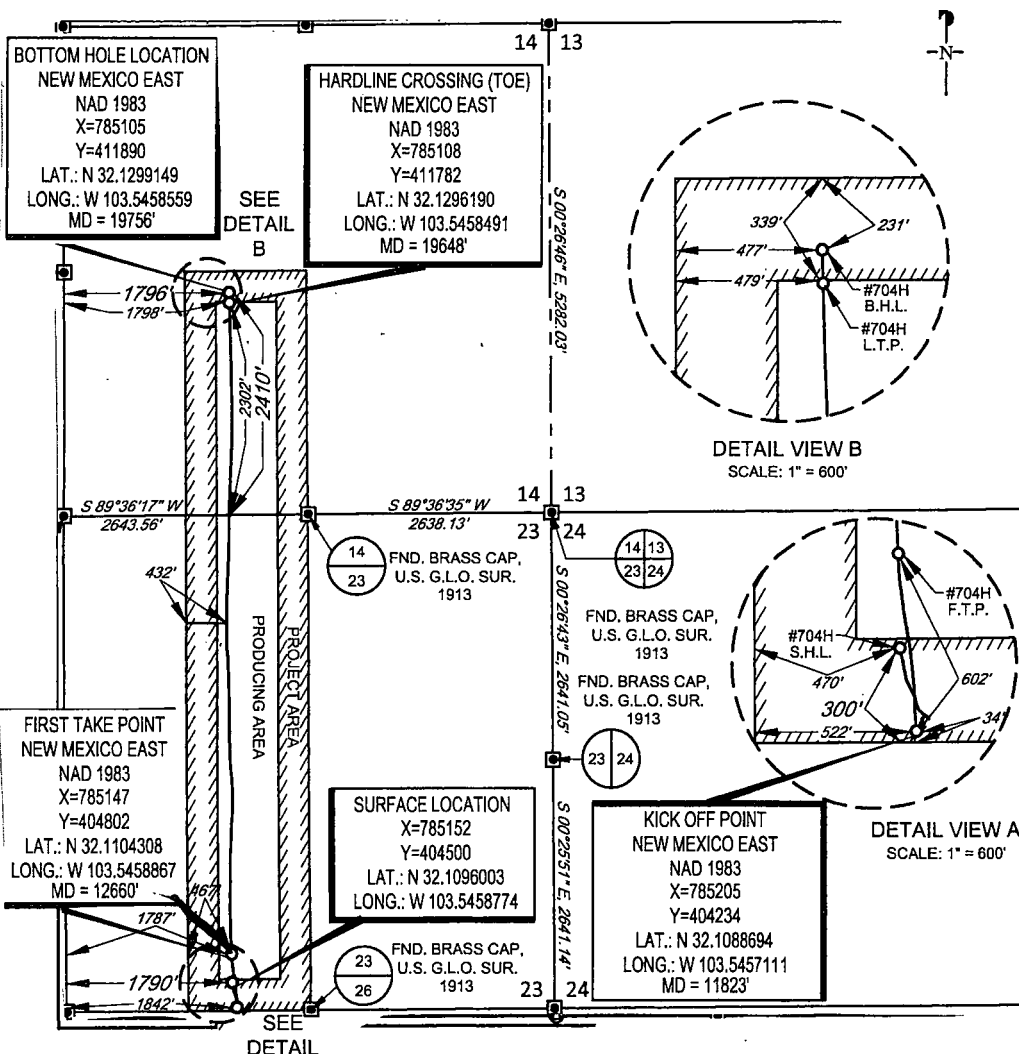
¹⁰Surface Location

| | | | | | | | | | |
|--------------------|---------------|------------------|---------------|--------------|-----------------------|---------------------------|------------------------|------------------------|---------------|
| UL or lot no. N | Section 23 | Township 25-S | Range 33-E | Lot Idn - | Feet from the 300' | North/South line SOUTH | Feet from the 1790' | East/West line WEST | County LEA |
|--------------------|---------------|------------------|---------------|--------------|-----------------------|---------------------------|------------------------|------------------------|---------------|

| | | | | | | | | | |
|--------------------|---------------|------------------|---------------|--------------|------------------------|---------------------------|------------------------|------------------------|---------------|
| UL or lot no. K | Section 14 | Township 25-S | Range 33-E | Lot Idn - | Feet from the 2410' | North/South line SOUTH | Feet from the 1796' | East/West line WEST | County LEA |
|--------------------|---------------|------------------|---------------|--------------|------------------------|---------------------------|------------------------|------------------------|---------------|

| | | | |
|---|-------------------------------|----------------------------------|-------------------------|
| ¹² Dedicated Acres 240.00 | ¹³ Joint or Infill | ¹⁴ Consolidation Code | ¹⁵ Order No. |
|---|-------------------------------|----------------------------------|-------------------------|

No allowable will be assigned to this completion until all interests have been consolidated or a non-standard unit has been approved by the division.



¹⁷OPERATOR CERTIFICATION

I hereby certify that the information contained herein is true and complete to the best of my knowledge and belief, and that this organization either owns a working interest or unleased mineral interest in the land including the proposed bottom hole location or has a right to drill this well at this location pursuant to a contract with an owner of such a mineral or working interest, or to a voluntary pooling agreement or a compulsory pooling order heretofore entered by the division.

Kay Maddox 8/24/2018
Signature Date

KAY MADDUX
Printed Name

E-mail Address

¹⁸SURVEYOR CERTIFICATION

I hereby certify that the well location shown on this plat was plotted from field notes of actual surveys made by me or under my supervision, and that the same is true to the best of my belief.

8942682017
Date of Survey
Signature and Seal of Professional Surveyor
MICHAEL BROWN
NEW MEXICO
18329
PROFESSIONAL SURVEYOR
Certificate Number

SCALE: 1" = 2000'

0' 1000' 2000'

SECTION 23, TOWNSHIP 25-S, RANGE 33-E, N.M.P.M.
LEA COUNTY, NEW MEXICO

FND. BRASS CAP.
U.S. G.L.O. SUR.
1913

FND. BRASS CAP.
U.S. G.L.O. SUR.
1913

FND. BRASS CAP.
U.S. G.L.O. SUR.
1913

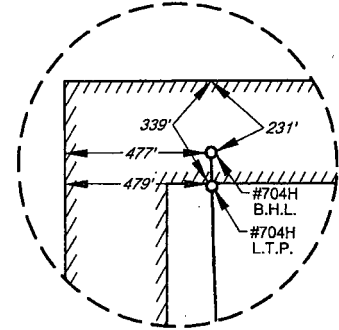
BOTTOM HOLE LOCATION
NEW MEXICO EAST
NAD 1983
X=785105
Y=411890
LAT.: N 32.1299149
LONG.: W 103.5458559
MD = 19756'

HARDLINE CROSSING (TOE)
NEW MEXICO EAST
NAD 1983
X=785108
Y=411782
LAT.: N 32.1296190
LONG.: W 103.5458491
MD = 19648'

| POINT | UTM ZONE 13 COORDINATES |
|-------|------------------------------|
| SHL | X=2090522.318 Y=11658472.945 |
| KOP | X=2090577.382 Y=11658207.785 |
| FTP | X=2090515.356 Y=11658774.937 |
| LTP | X=2090432.781 Y=11655754.115 |
| BHL | X=2090429.249 Y=11665861.718 |

FND. BRASS CAP.
U.S. G.L.O. SUR.
1913

S 00°26'46"E 5292.03'



DETAIL VIEW B
SCALE: 1" = 600'

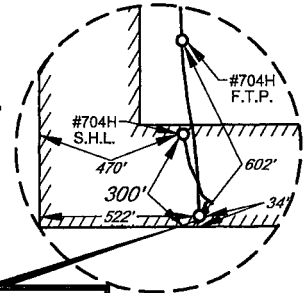
FND. BRASS CAP.
U.S. G.L.O. SUR.
1913

S 89°36'17"W 2643.56'

S 89°36'35"W 2638.13'

FND. BRASS CAP.
U.S. G.L.O. SUR.
1913

FND. BRASS CAP.
U.S. G.L.O. SUR.
1913



DETAIL VIEW A
SCALE: 1" = 600'

FIRST TAKE POINT
NEW MEXICO EAST
NAD 1983
X=785147
Y=404802
LAT.: N 32.1104308
LONG.: W 103.5458867
MD = 12660'

SURFACE LOCATION
X=785152
Y=404500
LAT.: N 32.1096003
LONG.: W 103.5458774

KICK OFF POINT
NEW MEXICO EAST
NAD 1983
X=785205
Y=404234
LAT.: N 32.1088694
LONG.: W 103.5457111
MD = 11823'

FND. BRASS CAP.
U.S. G.L.O. SUR.
1913

FND. BRASS CAP.
U.S. G.L.O. SUR.
1913

FND. BRASS CAP.
U.S. G.L.O. SUR.
1913

LEASE NAME & WELL NO.: CABALLO 23 FED COM #704H

SECTION 23 TWP 25-S RGE 33-E SURVEY N.M.P.M.

COUNTY LEA STATE NM ELEVATION 3341'

DESCRIPTION 300' FSL & 1790' FWL



TOPOGRAPHIC
LOYALTY INNOVATION LEGACY

1400 EVERMAN PARKWAY, Ste. 146 • FT. WORTH, TEXAS 76140
TELEPHONE: (817) 744-7512 • FAX (817) 744-7554
2903 NORTH BIG SPRING • MIDLAND, TEXAS 79705
TELEPHONE: (432) 682-1653 OR (800) 767-1653 • FAX (432) 682-1743
WWW.TOPOGRAPHIC.COM

Michael Blake Brown, P.S. No. 18329
AUGUST 6, 2018

eoog resources, inc.

CABALLO 23 FED COM
#704H
AS-COMPLETED

REVISION:

DATE: 08/06/2018

FILE: AD_CABALLO_23_FED_COM_704H

DRAWN BY: A.M.D.

SHEET: 1 OF 1

NOTES:

1. ORIGINAL DOCUMENT SIZE: 8.5" X 11"
2. ALL BEARINGS, DISTANCES, AND COORDINATE VALUES CONTAINED HEREIN ARE GRID BASED UPON THE NEW MEXICO COORDINATE SYSTEM OF 1983, EAST ZONE, U.S. SURVEY FEET.
3. THIS WELL LOCATION SHOWN HEREON HAS BEEN SURVEYED ON THE GROUND UNDER MY SUPERVISION AND PREPARED ACCORDING TO THE EVIDENCE FOUND AT THE TIME OF SURVEY, AND DATA PROVIDED BY EOG RESOURCES, INC. THIS CERTIFICATION IS MADE AND LIMITED TO THOSE PERSONS OR ENTITIES SHOWN ON THE FACE OF THIS PLAT AND IS NON-TRANSFERABLE. THIS SURVEY IS CERTIFIED FOR THIS TRANSACTION ONLY.