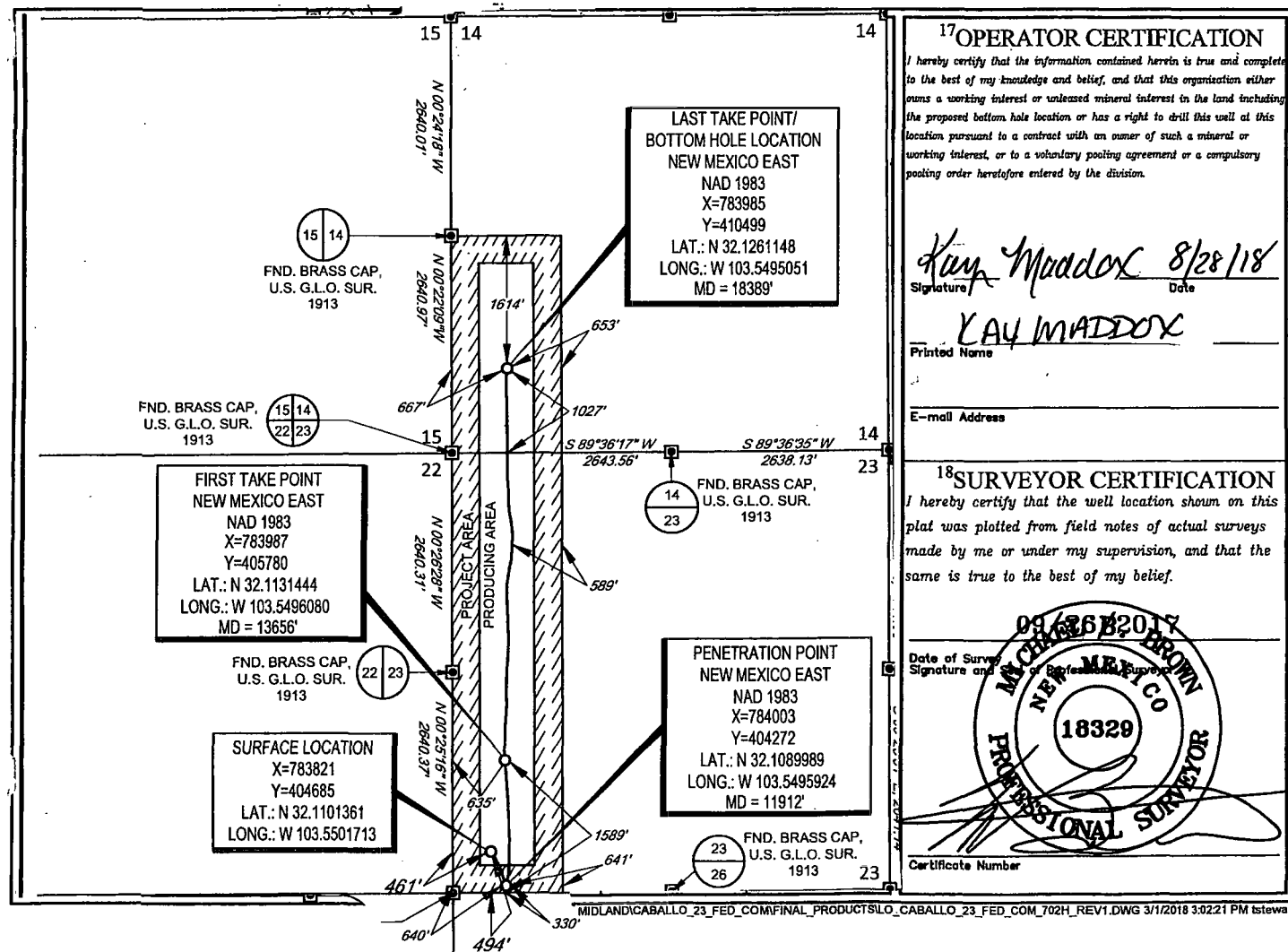


State of New Mexico **HOBBS OCD**  
Energy, Minerals & Natural Resources  
Department **AUG 31 2018**  
**OIL CONSERVATION DIVISION**  
1220 South St. Francis Dr. **RECEIVED**  
Santa Fe, NM 87505

**District Office**

☒ **AMENDED REPORT**



SCALE: 1" = 2000'

0' 1000' 2000'

SECTION 14 & 23, TOWNSHIP 25-S, RANGE 33-E, N.M.P.M.  
LEA COUNTY, NEW MEXICO

FND. BRASS CAP,  
U.S. G.L.O. SUR.  
1913

FND. BRASS CAP,  
U.S. G.L.O. SUR.  
1913

FND. BRASS CAP,  
U.S. G.L.O. SUR.  
1913

10 11  
15 14

11 12  
14 13

11 14

11 13

N 89°41'13" E, 2636.64'

N 89°30'17" E, 2639.62'

N 00°24'18" W, 2640.01'

S 00°26'46" E, 5282.03'

LAST TAKE POINT/  
BOTTOM HOLE LOCATION  
NEW MEXICO EAST  
NAD 1983  
X=783985  
Y=410499  
LAT.: N 32.1261148  
LONG.: W 103.5495051  
MD = 18389'

| POINT  | UTM ZONE 13 COORDINATES |                |
|--------|-------------------------|----------------|
| SHL    | X=2089190.448           | Y=11658649.909 |
| PP     | X=2089375.213           | Y=11658238.680 |
| FTP    | X=2089350.077           | Y=11659746.397 |
| BHLATP | X=2089318.417           | Y=11664464.346 |

FND. BRASS CAP,  
U.S. G.L.O. SUR.  
1913

FND. BRASS CAP,  
U.S. G.L.O. SUR.  
1913

FIRST TAKE POINT  
NEW MEXICO EAST  
NAD 1983  
X=783987  
Y=405780  
LAT.: N 32.1131444  
LONG.: W 103.5496080  
MD = 13656'

FND. BRASS CAP,  
U.S. G.L.O. SUR.  
1913

SURFACE LOCATION  
X=783821  
Y=404685  
LAT.: N 32.1101361  
LONG.: W 103.5501713

FND. BRASS CAP,  
U.S. G.L.O. SUR.  
1913

FND. BRASS CAP,  
U.S. G.L.O. SUR.  
1913

FND. BRASS CAP,  
U.S. G.L.O. SUR.  
1913

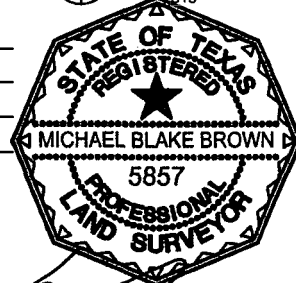
PENETRATION POINT  
NEW MEXICO EAST  
NAD 1983  
X=784003  
Y=404272  
LAT.: N 32.1089989  
LONG.: W 103.5495924  
MD = 11912'

FND. BRASS CAP,  
U.S. G.L.O. SUR.  
1913

FND. BRASS CAP,  
U.S. G.L.O. SUR.  
1913

FND. BRASS CAP,  
U.S. G.L.O. SUR.  
1913

LEASE NAME & WELL NO.: CABALLO 23 FED COM #702H  
SECTION 14 & 23 TWP 25-S RGE 33-E SURVEY N.M.P.M.  
COUNTY LEA STATE NM ELEVATION 3342'  
DESCRIPTION 494' FSL & 461' FWL



**TOPOGRAPHIC**  
LOYALTY INNOVATION LEGACY

1400 EVERMAN PARKWAY, Ste. 146 • FT. WORTH, TEXAS 76140  
TELEPHONE: (817) 744-7512 • FAX (817) 744-7554  
2903 NORTH BIG SPRING • MIDLAND, TEXAS 79705  
TELEPHONE: (432) 682-1653 OR (800) 767-1653 • FAX (432) 682-1743  
WWW.TOPOGRAPHIC.COM

Michael Blake Brown, P.S. No. 18329  
AUGUST 16, 2018



CABALLO 23 FED COM  
#702H  
AS-COMPLETED

DATE: 08/16/2018

FILE:AD\_CABALLO\_23\_FED\_COM\_702H

DRAWN BY: A.M.D.

SHEET: 1 OF 1

REVISION:

NOTES:

1. ORIGINAL DOCUMENT SIZE: 8.5" X 11"
2. ALL BEARINGS, DISTANCES, AND COORDINATE VALUES CONTAINED HEREIN ARE GRID BASED UPON THE NEW MEXICO COORDINATE SYSTEM OF 1983, EAST ZONE, U.S. SURVEY FEET.
3. THIS WELL LOCATION SHOWN HEREON HAS BEEN SURVEYED ON THE GROUND UNDER MY SUPERVISION AND PREPARED ACCORDING TO THE EVIDENCE FOUND AT THE TIME OF SURVEY, AND DATA PROVIDED BY EOG RESOURCES, INC. THIS CERTIFICATION IS MADE AND LIMITED TO THOSE PERSONS OR ENTITIES SHOWN ON THE FACE OF THIS PLAT AND IS NON-TRANSFERABLE. THIS SURVEY IS CERTIFIED FOR THIS TRANSACTION ONLY.