

DISTRICT IV
1820 S. St. Francis Dr., Santa Fe, NM 87505
Phone (505) 476-3460 Fax (505) 476-3462

Form C-102
Revised August 1, 2011

OIL CONSERVATION DIVISION
1220 South St. Francis Dr.
Santa Fe, New Mexico 87505

**Submit one copy to appropriate
District Office**

SEP 11 2018

☐ AMENDED REPORT

WELL LOCATION AND ACREAGE DEDICATION PLAT

| | | | |
|----------------------------|---------------------------------------|--------------------|-----------------------------------|
| API Number 30-025-44916 | | Pool Code 27810 | Well Name GLADIOLA; SAN ANDRES |
| Property Code 321604 | Property Name TRINITY 22 STATE COM | | Well Number 1H |
| OGRID No. 231429 | Operator Name MANZANO LLC | | Elevation 3804' |

Surface Location

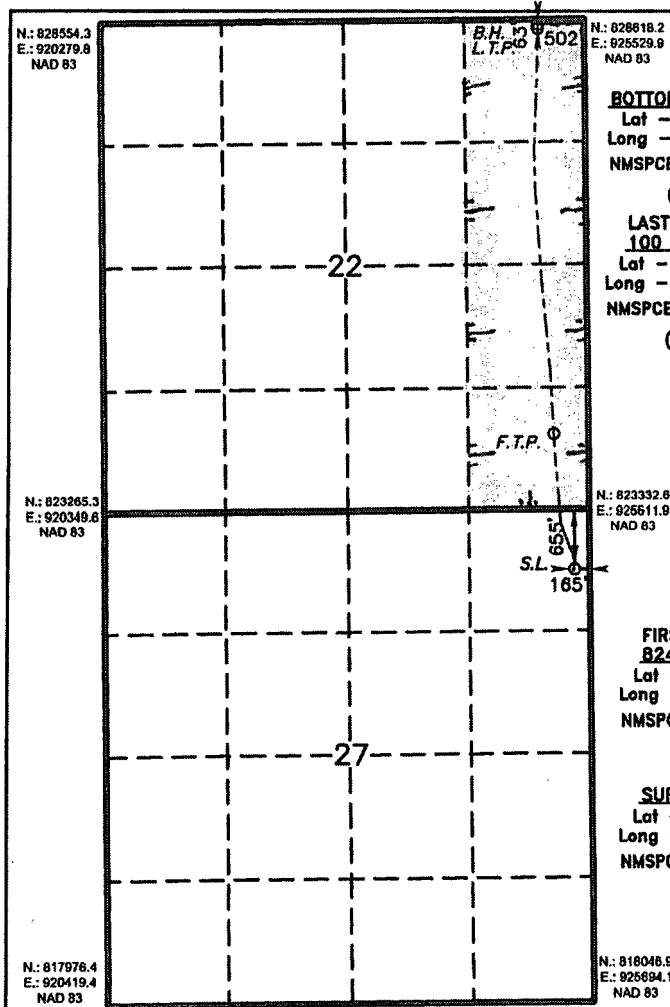
| UL or lot No. | Section | Township | Range | Lot Idn | Feet from the | North/South line | Feet from the | East/West line | County |
|---------------|---------|----------|-------|---------|---------------|------------------|---------------|----------------|--------|
| A | 27 | 12 S | 38 E | | 655 | NORTH | 165 | EAST | LEA |

Bottom Hole Location If Different From Surface

| UL or lot No. | Section | Township | Range | Lot Idn | Feet from the | North/South line | Feet from the | East/West line | County |
|---------------|---------|----------|-------|---------|---------------|------------------|---------------|----------------|--------|
| A | 22 | 12 S | 38 E | | 63 | NORTH | 502 | EAST | LEA |

| | | | |
|-----------------|-----------------|--------------------|-----------|
| Dedicated Acres | Joint or Infill | Consolidation Code | Order No. |
| 160 | | | |

**NO ALLOWABLE WILL BE ASSIGNED TO THIS COMPLETION UNTIL ALL INTERESTS HAVE BEEN CONSOLIDATED
OR A NON-STANDARD UNIT HAS BEEN APPROVED BY THE DIVISION**



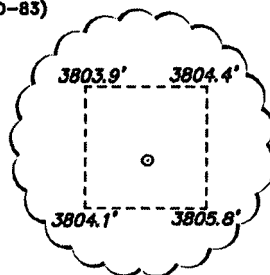
: 828818.2
 : 825529.8
 NAD 83

BOTTOM HOLE LOCATION

Lat - N 33.271297°
Long - W 103.077981°
NMSPCE- N 828549.3
E 925028.9
(NAD-83)

LAST TAKE POINT

100 FNL & 503 FEL
Lat - N 33.271194°
Long - W 103.077983°
NMSPCE- N 828512.1
E 925028.9
(NAD-83)



FIRST TAKE POINT

824 FSL & 377 FEL
Lat - N 33.259206°
Long - W 103.077522°
NMSFCE- N 824151.9
E 925222.1
(NAD-83)

SURFACE LOCATION

Lat - N 33.255132°
Long - W 103.076828°
NMSPCE- N 822671.9
E 925452.2
(NAD-83)

OPERATOR CERTIFICATION

I hereby certify that the information contained herein is true and complete to the best of my knowledge and belief, and that this organization either owns or working interest in and/or has a mineral interest in the lands including the proposed bottom hole location or have a right to drill this well at this location pursuant to a contract with an owner of such a mineral or working interest, or to a voluntary pooling agreement or a compulsory pooling order heretofore entered by the Commission.

Signature W. H. H. H. H. Date 9/10/18

Mike Hanagan
Printed Name

mike@manzanenergy.com
Email Address

SURVEYOR CERTIFICATION

I hereby certify that the well location shown on this plat was plotted from field notes of actual surveys made by me or under my supervision and that the same is true and correct to the best of my belief.

JUN 19 2018

Date Surveyed _____
Signature & Seal of _____
Professional Surveyor _____

Certificate No. Gary W. Jones 7977
Basic Surveys

