

UNITED STATES  
DEPARTMENT OF THE INTERIOR  
BUREAU OF LAND MANAGEMENT

OCD Hobbs

FORM APPROVED  
OMB No. 1004-0137  
Expires: July 31, 2010

WELL COMPLETION OR RECOMPLETION REPORT AND LOG

5. Lease Serial No.  
NMNM66925

1a. Type of Well ☒ Oil Well ☐ Gas Well ☐ Dry ☐ Other  
b. Type of Completion ☒ New Well ☐ Work Over ☐ Deepen ☐ Plug Back ☐ Dir. Resvr.  
Other \_\_\_\_\_

SEP 13 2018  
RECEIVED

2. Name of Operator  
OXY USA INCORPORATED

Contact: SARAH CHAPMAN  
E-Mail: SARAH\_CHAPMAN@OXY.COM

3. Address P O BOX 4294  
HOUSTON, TX 77210-4294

3a. Phone No. (include area code)  
Ph: 713-350-4997

6. If Indian, Allottee or Tribe Name

7. Unit or CA Agreement Name and No.  
NMNM137096X

8. Lease Name and Well No.  
MESA VERDE BS UNIT 6H

9. API Well No.  
30-025-44042-00-S1

4. Location of Well (Report location clearly and in accordance with Federal requirements)\*  
Sec 17 T24S R32E Mer NMP  
At surface SWSE 280FSL 2624FEL 32.210987 N Lat, 103.696671 W Lon  
Sec 17 T24S R32E Mer NMP  
At top prod interval reported below SWSE 340FSL 2185FEL 32.211159 N Lat, 103.695251 W Lon  
Sec 8 T24S R32E Mer NMP  
At total depth NWNE 206FNL 2292FEL 32.238632 N Lat, 103.695343 W Lon

10. Field and Pool, or Exploratory  
MESA VERDE

11. Sec., T., R., M., or Block and Survey  
or Area Sec 17 T24S R32E Mer NMP

12. County or Parish  
LEA

13. State  
NM

14. Date Spudded  
01/06/2018

15. Date T.D. Reached  
02/20/2018

16. Date Completed  
☐ D & A ☒ Ready to Prod.  
04/06/2018

17. Elevations (DF, KB, RT, GL)\*  
3560 GL

18. Total Depth: MD 20454  
TVD 10411

19. Plug Back T.D.: MD 20395  
TVD 10410

20. Depth Bridge Plug Set: MD  
TVD

21. Type Electric & Other Mechanical Logs Run (Submit copy of each)  
MUDLOG

22. Was well cored? ☒ No ☐ Yes (Submit analysis)  
Was DST run? ☒ No ☐ Yes (Submit analysis)  
Directional Survey? ☐ No ☒ Yes (Submit analysis)

23. Casing and Liner Record (Report all strings set in well)

Hole Size	Size/Grade	Wt. (#/ft.)	Top (MD)	Bottom (MD)	Stage Cementer Depth	No. of Sks. & Type of Cement	Slurry Vol. (BBL)	Cement Top*	Amount Pulled
17.500	13.375 J55	54.5	0	939		1240	286	0	
12.250	9.625 L80	47.0	0	4735		1300	490	0	
8.500	5.500 P110	20.0	0	20444		2970	911	1312	

24. Tubing Record

Size	Depth Set (MD)	Packer Depth (MD)	Size	Depth Set (MD)	Packer Depth (MD)	Size	Depth Set (MD)	Packer Depth (MD)

25. Producing Intervals

26. Perforation Record

Formation	Top	Bottom	Perforated Interval	Size	No. Holes	Perf. Status
A) BONE SPRING 2ND	10739	20223	10739 TO 20223	0.000	1176	ACTIVE - Bone Spring
B)						
C)						
D)						

27. Acid, Fracture, Treatment, Cement Squeeze, Etc.

Depth Interval	Amount and Type of Material
10739 TO 20223	15869364G SLICK WATER + 32508G 7.5% HCL ACID W/ 19588688# SAND

28. Production - Interval A

Date First Produced	Test Date	Hours Tested	Test Production	Oil BBL	Gas MCF	Water BBL	Oil Gravity Corr. API	Gas Gravity	Production Method
05/13/2018	06/06/2018	24	→	1364.0	2209.0	4246.0			FLows FROM WELL
Choke Size	Tbg. Press. Flwg.	Csg. Press.	24 Hr. Rate	Oil BBL	Gas MCF	Water BBL	Gas:Oil Ratio	Well Status	
128/128	SI	971.0	→	1364	2209	4246		POW	

28a. Production - Interval B

Date First Produced	Test Date	Hours Tested	Test Production	Oil BBL	Gas MCF	Water BBL	Oil Gravity Corr. API	Gas Gravity	Production Method
			→						
Choke Size	Tbg. Press. Flwg.	Csg. Press.	24 Hr. Rate	Oil BBL	Gas MCF	Water BBL	Gas:Oil Ratio	Well Status	
	SI		→						

ACCEPTED FOR RECORD

SEP - 9 2018

BUREAU OF LAND MANAGEMENT  
CARLSBAD FIELD OFFICE

(See Instructions and spaces for additional data on reverse side)

ELECTRONIC SUBMISSION #430623 VERIFIED BY THE BLM WELL INFORMATION SYSTEM

\*\* BLM REVISED \*\* BLM REVISED \*\* BLM REVISED \*\* BLM REVISED \*\*

Reclamation Due: 10/6/2018

Handwritten signature/initials

## 28b. Production - Interval C

Date First Produced	Test Date	Hours Tested	Test Production →	Oil BBL	Gas MCF	Water BBL	Oil Gravity Corr. API	Gas Gravity	Production Method
Choke Size	Tbg. Press. Flwg. SI	Csg. Press.	24 Hr. Rate →	Oil BBL	Gas MCF	Water BBL	Gas:Oil Ratio	Well Status	

## 28c. Production - Interval D

Date First Produced	Test Date	Hours Tested	Test Production →	Oil BBL	Gas MCF	Water BBL	Oil Gravity Corr. API	Gas Gravity	Production Method
Choke Size	Tbg. Press. Flwg. SI	Csg. Press.	24 Hr. Rate →	Oil BBL	Gas MCF	Water BBL	Gas:Oil Ratio	Well Status	

29. Disposition of Gas(Sold, used for fuel, vented, etc.)  
SOLD

## 30. Summary of Porous Zones (Include Aquifers):

Show all important zones of porosity and contents thereof: Cored intervals and all drill-stem tests, including depth interval tested, cushion used, time tool open, flowing and shut-in pressures and recoveries.

## 31. Formation (Log) Markers

Formation	Top	Bottom	Descriptions, Contents, etc.	Name	Top
					Meas. Depth
BELL CANYON	4700	5566		RUSTLER	811
CHERRY CANYON	5567	6847		SALADO	1157
BRUSHY CANYON	6848	8519		CASTILE	3307
BONE SPRING	8520	9516		DELAWARE	4671
BONE SPRING 1ST	9517	9904		BELL CANYON	4700
BONE SPRING 2ND	9905	10500		CHERRY CANYON	5567
				BRUSHY CANYON	6848
				BONE SPRING	8520

## 32. Additional remarks (include plugging procedure):

LOG HEADER, DIRECTIONAL SURVEY, AS DRILLED C-102 AND WBD ARE ATTACHED.

## 33. Circle enclosed attachments:

- |   |                    |               |                       |
|---|--------------------|---------------|-----------------------|
| 1. Electrical/Mechanical Logs (1 full set req'd.)     | 2. Geologic Report | 3. DST Report | 4. Directional Survey |
| 5. Sundry Notice for plugging and cement verification | 6. Core Analysis   | 7 Other:      |                       |

## 34. I hereby certify that the foregoing and attached information is complete and correct as determined from all available records (see attached instructions):

Electronic Submission #430623 Verified by the BLM Well Information System.

For OXY USA INCORPORATED, sent to the Hobbs

Committed to AFMSS for processing by DINAH NEGRETE on 08/25/2018 (18DCN0116SE)

Name (please print) DAVID STEWART

Title SR. REGULATORY ADVISOR

Signature (Electronic Submission)

Date 08/09/2018

Title 18 U.S.C. Section 1001 and Title 43 U.S.C. Section 1212, make it a crime for any person knowingly and willfully to make to any department or agency of the United States any false, fictitious or fraudulent statements or representations as to any matter within its jurisdiction.

**\*\* REVISED \*\* REVISED \*\* REVISED \*\* REVISED \*\* REVISED \*\* REVISED \*\* REVISED \*\* REVISED \*\***

District I  
1623 N. French Dr., Hobbs, NM 88240  
Phone: (575) 393-6161 Fax: (575) 393-0720  
District II  
811 S. First St., Artesia, NM 88210  
Phone: (575) 748-1283 Fax: (575) 748-9720  
District III  
1000 Rio Brazos Road, Aztec, NM 87410  
Phone: (505) 334-6173 Fax: (505) 334-6170  
District IV  
1220 S. St. Francis Dr., Santa Fe, NM 87505  
Phone: (505) 476-3460 Fax: (505) 476-3462

State of New Mexico  
Energy, Minerals & Natural Resources Department  
OIL CONSERVATION DIVISION  
1220 South St. Francis Dr.  
Santa Fe, NM 87505

Form C-102  
Revised August 1, 2011  
Submit one copy to appropriate  
District Office

☒ AMENDED REPORT  
(As-drilled)

WELL LOCATION AND ACREAGE DEDICATION PLAT

API Number <b>30-02S-44042</b>	Pool Code <b>96229</b>	Pool Name <b>Mesa Verde ; Bone Spring</b>
Property Code <b>319616</b>	Property Name <b>MESA VERDE "17-8" FEDERAL COM BS Unit</b>	Well Number <b>4464</b>
OGRID No. <b>16696</b>	Operator Name <b>OXY USA INC.</b>	Elevation <b>3559.6'</b>

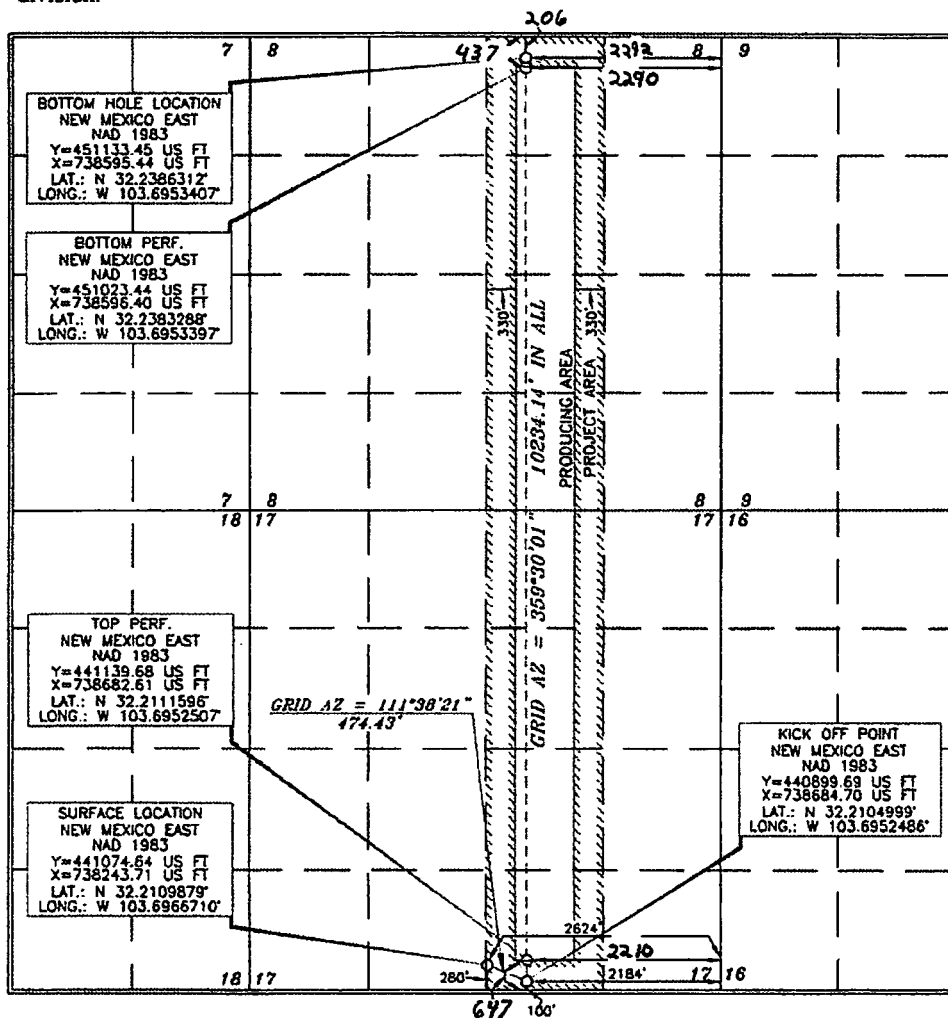
Surface Location

UL or lot no.	Section	Township	Range	Lot Idn	Feet from the	North/South line	Feet from the	East/West line	County
0	17	24 SOUTH	32 EAST, N.M.P.M.		280'	SOUTH	2624'	EAST	LEA

Bottom Hole Location If Different From Surface

UL or lot no.	Section	Township	Range	Lot Idn	Feet from the	North/South line	Feet from the	East/West line	County
B	8	24 SOUTH	32 EAST, N.M.P.M.		230' 206'	NORTH	2207' 2292'	EAST	LEA
Dedicated Acres <b>320</b>	Joint or Infill <b>Y</b>	Consolidation Code	Order No.	FTP: 647' FSL 2210' FEL LTP: 437' FNL 2290' FEL					

No allowable will be assigned to this completion until all interests have been consolidated or a non-standard unit has been approved by the division.



OPERATOR CERTIFICATION

I hereby certify that the information contained herein is true and complete to the best of my knowledge and belief, and that this organization either owns a working interest or undivided mineral interest in the land including the proposed bottom hole location or has a right to drill this well at this location pursuant to a contract with an owner of such a mineral or working interest, or to a voluntary pooling agreement or a compulsory pooling order heretofore entered by the division.

Signature: *Justin Morris* Date: **8/8/18**  
Printed Name: **Justin Morris**  
E-mail Address: **Justin\_Morris@oxy.com**

SURVEYOR CERTIFICATION

I hereby certify that the well location shown on this plat was plotted from the results of actual surveys made by me or under my supervision and that the same is true and correct to the best of my belief.

Signature and Seal: *ERRY J. AS*  
Professional Surveyor  
Date of Survey: **SEPTEMBER 28, 2016**  
Certificate Number: **15079**