

UNITED STATES  
DEPARTMENT OF THE INTERIOR  
BUREAU OF LAND MANAGEMENT

OCD Hobbs

FORM APPROVED  
OMB No. 1004-0137  
Expires: July 31, 2010

## WELL COMPLETION OR RECOMPLETION REPORT AND LOG

5. Lease Serial No.  
NMLC029406B

- 1a. Type of Well ☒ Oil Well ☐ Gas Well ☐ Dry ☐ Other  
b. Type of Completion ☒ New Well ☐ Work Over ☐ Deepen ☐ Plug Back ☐ Lin. Resv.  
Other \_\_\_\_\_

6. If Indian, Allottee or Tribe Name

7. Unit or ~~Section~~ Name and No.  
~~Section 5 T17S R32E Mer NMP~~2. Name of Operator  
COG OPERATING LLCContact: KANICIA CASTILLO  
E-Mail: kanicia.castillo@cdevinc.com8. Lease Name and Well No.  
ZEPP0 5 FEDERAL COM 15H3. Address ONE CONCHO CENTER 600 W ILLINOIS AVENUE  
MIDLAND, TX 79701-42873a. Phone No. (in ~~the area~~)  
Ph: 720.499.15379. API Well No.  
30-025-44140-00-S1

4. Location of Well (Report location clearly and in accordance with Federal requirements)\*

Sec 5 T17S R32E Mer NMP

At surface SWNE 2490FNL 2335FEL 32.864094 N Lat, 103.787674 W Lon

Sec 5 T17S R32E Mer NMP

At top prod interval reported below NWSE 2310FSL 2289FEL 32.864094 N Lat, 103.787674 W Lon

Sec 8 T17S R32E Mer NMP

At total depth SWSE 59FSL 2284FEL 32.842068 N Lat, 103.787560 W Lon

10. Field and Pool, or Exploratory  
MALJAMAR11. Sec., T., R., M., or Block and Survey  
or Area Sec 5 T17S R32E Mer NMP12. County or Parish  
LEA13. State  
NM14. Date Spudded  
01/07/201815. Date T.D. Reached  
01/22/201816. Date Completed  
☐ D & A ☒ Ready to Prod.  
05/31/201817. Elevations (DF, KB, RT, GL)\*  
4099 GL18. Total Depth: MD  
TVD 13409  
576819. Plug Back T.D.: MD  
TVD 13120  
576820. Depth Bridge Plug Set: MD  
TVD21. Type Electric & Other Mechanical Logs Run (Submit copy of each)  
CN22. Was well cored? ☒ No ☐ Yes (Submit analysis)  
Was DST run? ☒ No ☐ Yes (Submit analysis)  
Directional Survey? ☐ No ☒ Yes (Submit analysis)

## 23. Casing and Liner Record (Report all strings set in well)

Hole Size	Size/Grade	Wt. (#/ft.)	Top (MD)	Bottom (MD)	Stage Cementer Depth	No. of Sk. & Type of Cement	Slurry Vol. (BBL)	Cement Top*	Amount Pulled
12.250	9.625 J55	40.0		2231		650			
8.750	7.000 L80	29.0		4889					
8.750	5.500 L80	17.0		13297		1150			
17.500	13.375 J55	54.5	0	1010		700		0	

## 24. Tubing Record

Size	Depth Set (MD)	Packer Depth (MD)	Size	Depth Set (MD)	Packer Depth (MD)	Size	Depth Set (MD)	Packer Depth (MD)
2.875	5819							

## 25. Producing Intervals

## 26. Perforation Record

Formation	Top	Bottom	Perforated Interval	Size	No. Holes	Perf. Status
A) YESO	5882	13095	5882 TO 13095			OPEN SLEEVES
B)						
C)						
D)						

## 27. Acid, Fracture, Treatment, Cement Squeeze, Etc.

Depth Interval	Amount and Type of Material
5882 TO 13095	ACIDIZE W/ 58,464 15% ACID, FRAC W/508,578 GALS TREATED WATER, 5,724,600 GALS SLICK WATER,

## 28. Production - Interval A

Date First Produced	Test Date	Hours Tested	Test Production	Oil BBL	Gas MCF	Water BBL	Oil Gravity Corr. API	Gas Gravity	Production Method
06/01/2018	06/06/2018	24	→	470.0	582.0	2795.0	41.0	0.60	ELECTRIC PUMP SUB-SURFACE
Choke Size	Tbg. Press. Flwg. SI	Csg. Press.	24 Hr. Rate	Oil BBL	Gas MCF	Water BBL	Gas:Oil Ratio	Well Status	
		70.0	→	470	582	2795	1238	POW	

## 28a. Production - Interval B

Date First Produced	Test Date	Hours Tested	Test Production	Oil BBL	Gas MCF	Water BBL	Oil Gravity Corr. API	Gas Gravity	Production Method
			→						
Choke Size	Tbg. Press. Flwg. SI	Csg. Press.	24 Hr. Rate	Oil BBL	Gas MCF	Water BBL	Gas:Oil Ratio	Well Status	
			→						

ACCEPTED FOR RECORD  
AUG 26 2018  
Minch Negrete  
BUREAU OF LAND MANAGEMENT  
CARLSBAD FIELD OFFICE

(See Instructions and spaces for additional data on reverse side)

ELECTRONIC SUBMISSION #427680 VERIFIED BY THE BLM WELL INFORMATION SYSTEM

\*\* BLM REVISED \*\* BLM REVISED \*\* BLM REVISED \*\* BLM REVISED \*\* BLM REVISED

Reclamation Due: 11/21/2018

## 28b. Production - Interval C

Date First Produced	Test Date	Hours Tested	Test Production →	Oil BBL	Gas MCF	Water BBL	Oil Gravity Corr. API	Gas Gravity	Production Method
Choke Size	Tbg. Press. Flwg. SI	Csg. Press.	24 Hr. Rate →	Oil BBL	Gas MCF	Water BBL	Gas:Oil Ratio	Well Status	

## 28c. Production - Interval D

Date First Produced	Test Date	Hours Tested	Test Production →	Oil BBL	Gas MCF	Water BBL	Oil Gravity Corr. API	Gas Gravity	Production Method
Choke Size	Tbg. Press. Flwg. SI	Csg. Press.	24 Hr. Rate →	Oil BBL	Gas MCF	Water BBL	Gas:Oil Ratio	Well Status	

29. Disposition of Gas(Sold, used for fuel, vented, etc.)  
SOLD

## 30. Summary of Porous Zones (Include Aquifers):

Show all important zones of porosity and contents thereof: Cored intervals and all drill-stem tests, including depth interval tested, cushion used, time tool open, flowing and shut-in pressures and recoveries.

## 31. Formation (Log) Markers

Formation	Top	Bottom	Descriptions, Contents, etc.	Name	Top Meas. Depth
RUSTLER QUEEN GRAYBURG SAN ANDRES GLORIETA PADDOCK	926 3193 3653 3933 5499 5626		SANDSTONE DOLOMITE & ANHYDRITE DOLOMITE & ANHYDRITE	RUSTLER QUEEN GRAYBURG SAN ANDRES GLORIETA PADDOCK	926 3193 3653 3933 5499 5626

32. Additional remarks (include plugging procedure):  
Logs will be submitted in WIS.

OCD will receive their logs via mail.

## 33. Circle enclosed attachments:

- |   |                    |               |                       |
|---|--------------------|---------------|-----------------------|
| 1. Electrical/Mechanical Logs (1 full set req'd.)     | 2. Geologic Report | 3. DST Report | 4. Directional Survey |
| 5. Sundry Notice for plugging and cement verification | 6. Core Analysis   | 7 Other:      |                       |

## 34. I hereby certify that the foregoing and attached information is complete and correct as determined from all available records (see attached instructions):

Electronic Submission #427680 Verified by the BLM Well Information System.

For COG OPERATING LLC, sent to the Hobbs

Committed to AFMSS for processing by DUNCAN WHITLOCK on 07/31/2018 (18DW0225SE)

Name (please print) KANICIA CASTILLO

Title SR REGULATORY ANALYST

Signature \_\_\_\_\_ (Electronic Submission)

Date 07/17/2018

Title 18 U.S.C. Section 1001 and Title 43 U.S.C. Section 1212, make it a crime for any person knowingly and willfully to make to any department or agency of the United States any false, fictitious or fraudulent statements or representations as to any matter within its jurisdiction.

**\*\* REVISED \*\* REVISED \*\* REVISED \*\* REVISED \*\* REVISED \*\* REVISED \*\* REVISED \*\* REVISED \*\***

District I  
1625 N. French Dr., Hobbs, NM 88240  
Phone: (575) 393-6161 Fax: (575) 393-0720  
District II  
811 S. First St., Artesia, NM 88210  
Phone: (575) 748-1283 Fax: (575) 748-9720  
District III  
1000 Rio Brazos Road, Aztec, NM 87410  
Phone: (505) 334-6178 Fax: (505) 334-6170  
District IV  
1220 S. St. Francis Dr., Santa Fe, NM 87505  
Phone: (505) 476-3460 Fax: (505) 476-3462

State of New Mexico  
Energy, Minerals & Natural Resources Department  
OIL CONSERVATION DIVISION  
1220 South St. Francis Dr.  
Santa Fe, NM 87505

Form C-102  
Revised August 1, 2011  
Submit one copy to appropriate  
District Office

☐ AMENDED REPORT

WELL LOCATION AND ACREAGE DEDICATION PLAT

<sup>1</sup> API Number <b>30-025-44140</b>		<sup>2</sup> Pool Code <b>44500</b>		<sup>3</sup> Pool Name <b>Maljamar ;Yeso, West</b>	
<sup>4</sup> Property Code <b>319782</b>		<sup>5</sup> Property Name <b>ZEPP0 5 FEDERAL COM</b>			<sup>6</sup> Well Number <b>15H</b>
<sup>7</sup> OGRID NO. <b>229137</b>		<sup>8</sup> Operator Name <b>COG OPERATING, LLC</b>			<sup>9</sup> Elevation <b>4099'</b>

<sup>10</sup> Surface Location

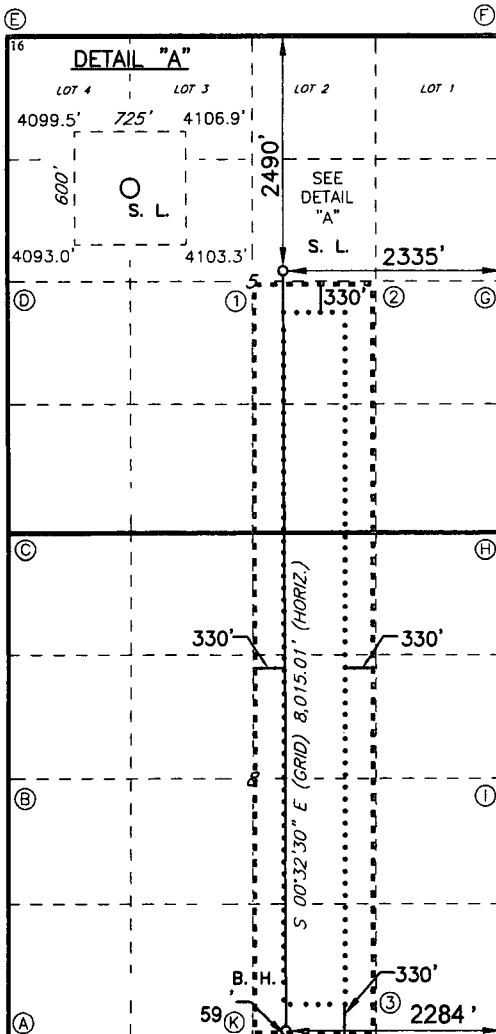
UL or lot no.	Section	Township	Range	Lot Idn	Feet from the	North/South line	Feet From the	East/West line	County
<b>G</b>	<b>5</b>	<b>17S</b>	<b>32E</b>		<b>2490</b>	<b>NORTH</b>	<b>2335</b>	<b>EAST</b>	<b>LEA</b>

<sup>11</sup> Bottom Hole Location If Different From Surface

UL or lot no.	Section	Township	Range	Lot Idn	Feet from the	North/South line	Feet from the	East/West line	County
<b>0</b>	<b>8</b>	<b>17S</b>	<b>32E</b>		<b>59</b>	<b>SOUTH</b>	<b>2284</b>	<b>EAST</b>	<b>LEA</b>

<sup>12</sup> Dedicated Acres <b>240</b>	<sup>13</sup> Joint or Infill	<sup>14</sup> Consolidation Code	<sup>15</sup> Order No.
---	-------------------------------	----------------------------------	-------------------------

No allowable will be assigned to this completion until all interest have been consolidated or a non-standard unit has been approved by the division.



**GEODETIC DATA**  
NAD 83 GRID - NM EAST  
**SURFACE LOCATION**  
N: 678523.6 - E: 708881.2  
LAT: 32.86409342° N  
LONG: 103.78767289° W  
**BOTTOM HOLE**  
N: 670510.8 - E: 708957.0  
LAT: 32.84206920° N  
LONG: 103.78756096° W

**CORNER DATA**  
NAD 83 GRID - NM EAST  
A: FOUND BRASS CAP "1913"  
N: 670449.0 - E: 705989.7  
B: FOUND BRASS CAP "1913"  
N: 673083.7 - E: 705979.1  
C: FOUND 1-1/2" IRON PIPE  
N: 675723.3 - E: 705965.0  
D: FOUND BRASS CAP "1913"  
N: 678363.7 - E: 705942.4  
E: FOUND BRASS CAP "1913"  
N: 681002.8 - E: 705922.6  
F: FOUND BRASS CAP "1913"  
N: 681021.0 - E: 711201.1  
G: FOUND BRASS CAP "1913"  
N: 678382.0 - E: 711216.6  
H: FOUND PK NAIL  
N: 675742.1 - E: 711243.8  
I: FOUND BRASS CAP "1913"  
N: 673102.5 - E: 711246.5  
J: FOUND BRASS CAP "1912"  
N: 670464.6 - E: 711264.7  
K: FOUND BRASS CAP "1912"  
N: 670454.6 - E: 708627.4

**CALCULATED POINTS**  
1: N 678372.9 - E 708583.2  
2: N 678377.5 - E 709899.8  
3: N 670459.5 - E 709946.0

<sup>17</sup> OPERATOR CERTIFICATION

I hereby certify that the information contained herein is true and complete to the best of my knowledge and belief, and that this organization either owns a working interest or unleased mineral interest in the land including the proposed bottom hole location or has a right to drill this well at this location pursuant to a contract with an owner of such a mineral or working interest, or to a voluntary pooling agreement or a compulsory pooling order heretofore entered by the division.

**7/17/18**  
Signature **Kanicia Castillo**  
Printed Name  
E-mail Address **kcastillo@concho.com**

<sup>18</sup> SURVEYOR CERTIFICATION

I hereby certify that the well location shown on this plat was plotted from field notes of actual surveys made by me or under my supervision, and that the same is true and correct to the best of my belief.

**10-31-2016**  
Date of Survey  
Signature and Seal of Professional Surveyor  
**19680**  
Certificate Number