

District I  
1625 N. French Dr., Hobbs, NM 88240  
Phone: (575) 393-6161 Fax: (575) 393-0720  
District II  
811 S. First St., Artesia, NM 88210  
Phone: (575) 748-1283 Fax: (575) 748-9720  
District III  
1000 Rio Brazos Road, Aztec, NM 87410  
Phone: (505) 334-6178 Fax: (505) 334-6170  
District IV  
1220 S. St. Francis Dr., Santa Fe, NM 87505  
Phone: (505) 476-3460 Fax: (505) 476-3462

State of New Mexico  
Energy, Minerals & Natural Resources Department  
OIL CONSERVATION DIVISION  
1220 South St. Francis Dr.  
Santa Fe, NM 87505  
**HOBBS OCD**

Form C-102  
Revised August 1, 2011  
Submit one copy to appropriate  
District Office  
☐ AMENDED REPORT

SEP 07 2018

RECEIVED

WELL LOCATION AND ACREAGE DEDICATION PLAT

1 API Number 30-025-44692	2 Pool Code 5695	3 Pool Name Bilbery Basin; Bone Spring
4 Property Code 321201	5 Property Name CHEDDAR 3BS FEDERAL COM	6 Well Number 1H
7 OGRID No. 372165	8 Operator Name CENTENNIAL RESOURCE PRODUCTION, LLC	9 Elevation 3665.0'

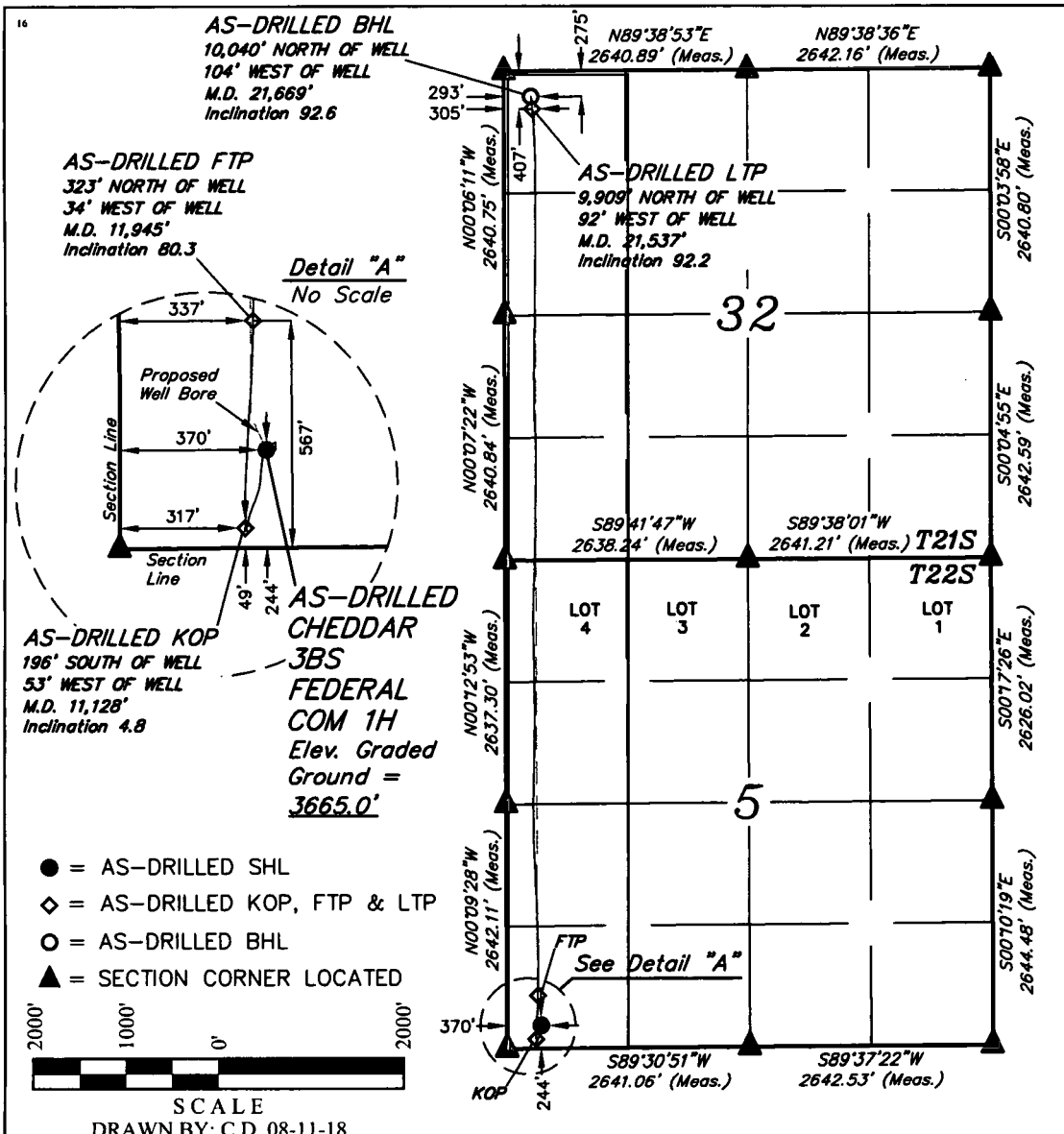
10 Surface Location

UL or lot no. M	Section 5	Township 22S	Range 32E	Lot Idn	Feet from the 244	North/South line SOUTH	Feet from the 370	East/West line WEST	County LEA
--------------------	--------------	-----------------	--------------	---------	----------------------	---------------------------	----------------------	------------------------	---------------

11 Bottom Hole Location If Different From Surface

UL or lot no. D	Section 32	Township 21S	Range 32E	Lot Idn	Feet from the 275	North/South line NORTH	Feet from the 293	East/West line WEST	County LEA
12 Dedicated Acres 319.68	13 Joint or Infill	14 Consolidation Code	15 Order No.						

No allowable will be assigned to this completion until all interests have been consolidated or a non-standard unit has been approved by the division.



<b>NAD 83 (AS-DRILLED SHL)</b> LATITUDE = 32°24'50.46" (32.414017°) LONGITUDE = 103°42'15.05" (103.704181°) STATE PLANE NAD 83 (N.M. EAST) Y: 514922.07' X: 735487.39' UTM, NAD 83 (ZONE 13) Y: 11768567.45' X: 2040180.59'	<b>NAD 83 (AS-DRILLED KOP)</b> LATITUDE = 32°24'48.52" (32.413479°) LONGITUDE = 103°42'15.67" (103.704352°) STATE PLANE NAD 83 (N.M. EAST) Y: 514726.03' X: 735435.71' UTM, NAD 83 (ZONE 13) Y: 11768371.13' X: 2040130.13'	<b>NAD 83 (AS-DRILLED FTP)</b> LATITUDE = 32°24'53.66" (32.414904°) LONGITUDE = 103°42'15.45" (103.704290°) STATE PLANE NAD 83 (N.M. EAST) Y: 515244.65' X: 735451.75' UTM, NAD 83 (ZONE 13) Y: 11768889.75' X: 2040142.94'	<b>NAD 83 (AS-DRILLED LTP)</b> LATITUDE = 32°26'28.50" (32.441250°) LONGITUDE = 103°42'15.93" (103.704424°) STATE PLANE NAD 83 (N.M. EAST) Y: 524828.84' X: 735354.16' UTM, NAD 83 (ZONE 13) Y: 11778471.52' X: 2039985.57'	<b>NAD 83 (AS-DRILLED BHL)</b> LATITUDE = 32°26'29.80" (32.441610°) LONGITUDE = 103°42'16.06" (103.704462°) STATE PLANE NAD 83 (N.M. EAST) Y: 524960.08' X: 735341.49' UTM, NAD 83 (ZONE 13) Y: 11778602.66' X: 2039972.07'
---	---	---	---	---

NOTE:  
• Distances referenced on plat to section lines are perpendicular.  
• Basis of Bearing is a Transverse Mercator Projection with a Central Meridian of W103°53'00"

APPROXIMATE WELL BORE DISTANCE FROM FTP TO LTP	
SECTION 5	4,712.68'
SECTION 32	4,876.74'
TOTAL	9,589.42'

**17 OPERATOR CERTIFICATION**  
I hereby certify that the information contained herein is true and complete to the best of my knowledge and belief, and that this organization either owns a working interest or unleased mineral interest in the land including the proposed bottom hole location or has a right to drill this well at this location pursuant to a contract with an owner of such a mineral or working interest, or to a voluntary pooling agreement or a compulsory pooling order heretofore entered by the division.  
  
Signature Date 9/6/18  
Printed Name Kanicia Castillo  
E-mail Address Kanicia.castillo@cdevinc.com

**18 SURVEYOR CERTIFICATION**  
I hereby certify that the well location shown on this plat was plotted from field notes of actual surveys made by me or under my supervision, and that the same is true and correct to the best of my belief.  
May 30, 2018  
Date of Survey  
Signature and Seal of Professional Surveyor:



Certificate Number: