

DISTRICT I  
1625 N. French Dr., Hobbs, NM 88240  
Phone: (575) 393-6161 Fax: (575) 393-0720

DISTRICT II  
811 S. First St., Artesia, NM 88210  
Phone: (575) 748-1283 Fax: (505) 748-9720

DISTRICT III  
1000 R. ... NM 87410  
Phone: (505) 476-3400 Fax: (505) 334-6170

DISTRICT IV  
1220 S. St. Francis Dr., Santa Fe, NM 87505  
Phone: (505) 476-3400 Fax: (505) 476-3462

State of New Mexico  
Energy, Minerals & Natural Resources Department  
**OIL CONSERVATION DIVISION**  
1220 South St. Francis Dr.  
Santa Fe, New Mexico 87505

Form C-102  
Revised August 1, 2011  
Submit one copy to appropriate District Office

AMENDED REPORT

**WELL LOCATION AND ACREAGE DEDICATION PLAT**

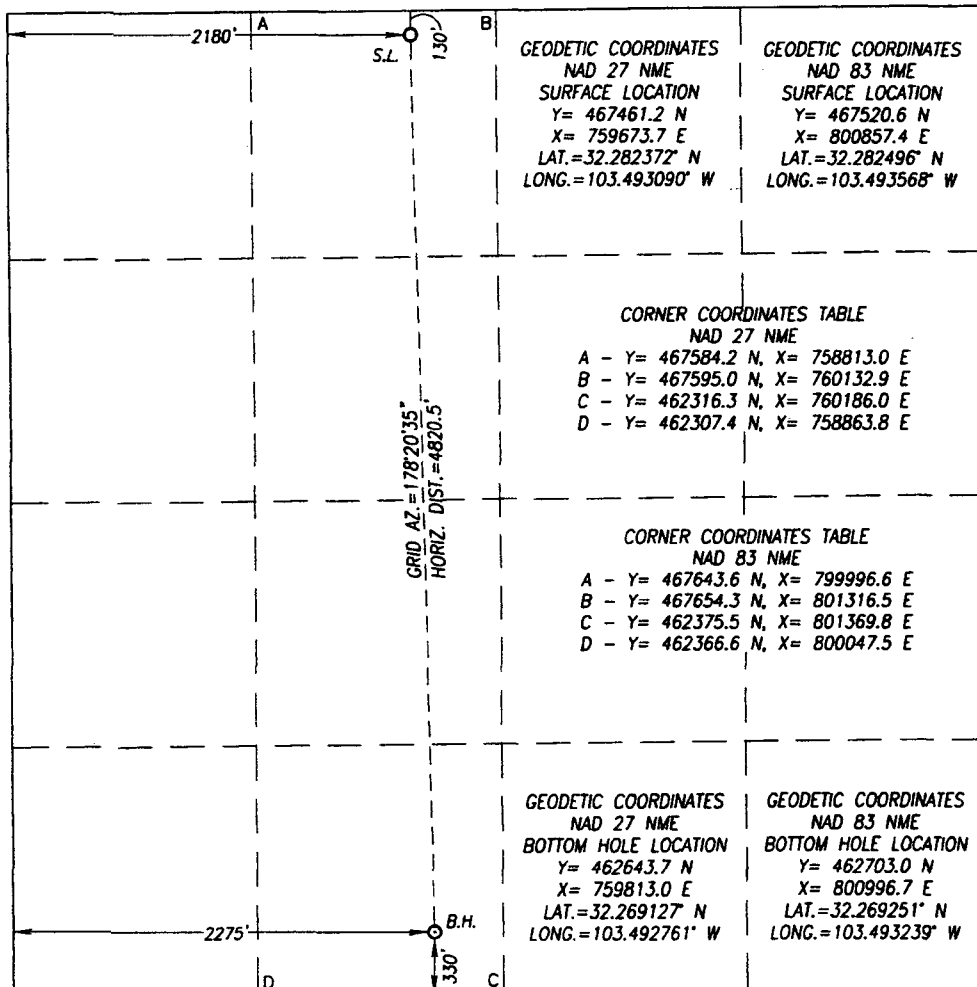
<b>RECEIVED</b> 30-025 45183		Pool Code <b>5150</b>	Pool Name Bell Lake; Avalon <b>ROCK SPRING</b>
Property Code <b>722426</b>	Property Name <b>COPPERLINE WEST 29 FEDERAL</b>		Well Number <b>7H</b>
OGRID No. <b>249099</b>	Operator Name <b>CAZA OPERATING, LLC</b>		Elevation <b>3539'</b>

Surface Location									
UL or lot No.	Section	Township	Range	Lot Idn	Feet from the	North/South line	Feet from the	East/West line	County
C	29	23-S	34-E		130	NORTH	2180	WEST	LEA

Bottom Hole Location If Different From Surface									
UL or lot No.	Section	Township	Range	Lot Idn	Feet from the	North/South line	Feet from the	East/West line	County
N	29	23-S	34-E		330	SOUTH	2275	WEST	LEA

Dedicated Acres	Joint or Infill	Consolidation Code	Order No.
160			

NO ALLOWABLE WILL BE ASSIGNED TO THIS COMPLETION UNTIL ALL INTERESTS HAVE BEEN CONSOLIDATED OR A NON-STANDARD UNIT HAS BEEN APPROVED BY THE DIVISION



**OPERATOR CERTIFICATION**

I hereby certify that the information herein is true and complete to the best of my knowledge and belief, and that this organization either owns a working interest or unleased mineral interest in the land including the proposed bottom hole location or has a right to drill this well at this location pursuant to a contract with an owner of such mineral or working interest, or to a voluntary pooling agreement or a compulsory pooling order heretofore entered by the division.

Signature \_\_\_\_\_ Date **11/13/2017**

**Steve Morris**  
Printed Name

**steve.morris@mojoenergy.com**  
E-mail Address

**SURVEYOR CERTIFICATION**

I hereby certify that the well location shown on this plat was plotted from field notes of actual surveys made by me or under my supervision, and that the same is true and correct to the best of my belief.

**JULY 25, 2016**

Date of Survey  
Signature & Seal of Professional Surveyor:

**RONALD J. EIDSON**  
NEW MEXICO  
REGISTERED SURVEYOR  
3239  
Certificate Number 12641  
JWSC W.O.: 16.11.0555