

Submit 1 Copy To Appropriate District Office
District I - (575) 393-6161
1625 N. French Dr., Hobbs, NM 88240
District II - (575) 748-1288
811 S. First St., Artesia, NM 88210
District III - (505) 476-6178
1000 Rio Brazos Rd., Aztec, NM 87410
District IV - (505) 476-3460
1220 S. St. Francis Dr., Santa Fe, NM 87505

State of New Mexico
Energy, Minerals and Natural Resources

Form C-103
Revised August 1, 2011

OIL CONSERVATION DIVISION
1220 South St. Francis Dr.
Santa Fe, NM 87505

WELL API NO. 30-025-07115
5. Indicate Type of Lease STATE FEE X
6. State Oil & Gas Lease No.
7. Lease Name or Unit Agreement Name GLAD WALLACE
8. Well Number 002
9. OGRID Number 138008
10. Pool name or Wildcat GLADIOLA; DEVONIAN

1. Type of Well: Oil Well X Gas Well Other

2. Name of Operator
SPECIAL ENERGY CORP.

3. Address of Operator
P.O. DRAWER 369, STILLWATER, OK 74076

4. Well Location
Unit Letter J : 1650 feet from the SOUTH line and 1650 feet from the EAST line
Section 31 Township 11S Range 38E NMPM LEA County

11. Elevation (Show whether DR, RKB, RT, GR, etc.)
3,885' - GR

12. Check Appropriate Box to Indicate Nature of Notice, Report or Other Data

NOTICE OF INTENTION TO:

PERFORM REMEDIAL WORK ☒ PLUG AND ABANDON ☒
TEMPORARILY ABANDON ☐ CHANGE PLANS ☐
PULL OR ALTER CASING ☐ MULTIPLE COMPL ☐
DOWNHOLE COMMINGLE ☐

OTHER: ☐

SUBSEQUENT REPORT OF:

REMEDIAL WORK ☐ ALTERING CASING ☐
COMMENCE DRILLING OPNS. ☐ P AND A
CASING/CEMENT JOB ☐

OTHER: ☐

13. Describe proposed or completed operations. (Clearly state all pertinent details, and give pertinent dates including estimated date of starting any proposed work). SEE RULE 19.15.7.14 NMAC. For Multiple Completions: ☒ wellbore diagram of proposed completion or recompletion.

- 1) SET 5-1/2" CIBP @ 11,900'; CIRC. WELL W/ M.L.F.; PUMP 25 SXS. CMT. @ 11,900'-11,700'.
- 2) PUMP 30 SXS. CMT. @ 9,127'-8,937' (T/W.C.).
- 3) PUMP 25 SXS. CMT. @ 7,865'-7,695' (T/ABO).
- 4) PUMP 25 SXS. CMT. @ 5,915'-5,765' (T/GLOR.).
- 5) PUMP 55 SXS. CMT. @ 4,480'-4,266' (8-5/8" CSG.SHOE, T/S.A., 5-1/2" CSG.STUB); WOC X TAG CMT. PLUG.
- 6) PUMP 90 SXS. CMT. @ 3,079'-2,825' (T/YATES, B/SALT); WOC X TAG CMT. PLUG.
- 7) PUMP 70 SXS. CMT. @ 2,385'-2,210' (T/SALT, T/ANHY.); WOC X TAG CMT. PLUG.
- 8) PUMP 40 SXS. CMT. @ 398'-298' (13-3/8" CSG.SHOE); WOC X TAG CMT. PLUG.
- 9) CIRC. 20 SXS. CMT. @ 63'-3'; DIG OUT X CUT OFF WELLHEAD 3' B.G.L.; WELD ON STEEL PLATE TO CSGS. X INSTALL DRY HOLE MARKER.

VERIFY CMT

DURING THIS PROCEDURE WE PLAN TO USE THE CLOSED-LOOP SYSTEM W/ A STEEL TANK AND HAUL CONTENTS TO THE REQUIRED DISPOSAL, PER OCD RULE 19.15.17.

Spud Date:

Rig Release Date:

I hereby certify that the information above is true and complete to the best of my knowledge and belief.

SIGNATURE

David A. Eyer

TITLE: AGENT

DATE: 09/26/18

Type or print name: DAVID A. EYLER

E-mail address: DEYLER@MILAGRO-RES.COM PHONE: 432.687.3033

For State Use Only

APPROVED BY:

Mark Whitman

TITLE P.E.S.

DATE

10/03/2018

Conditions of Approval (if any):

Glad Wallace #2
Unit "J" of Sec 31-11S-38E
Lea County, NM
API # 30-025-07115

SPECIAL ENERGY CORP.

Spud date: 5/57

P&A'd: 10/67

Re-entered: 6/90

P&A'd: 7/90

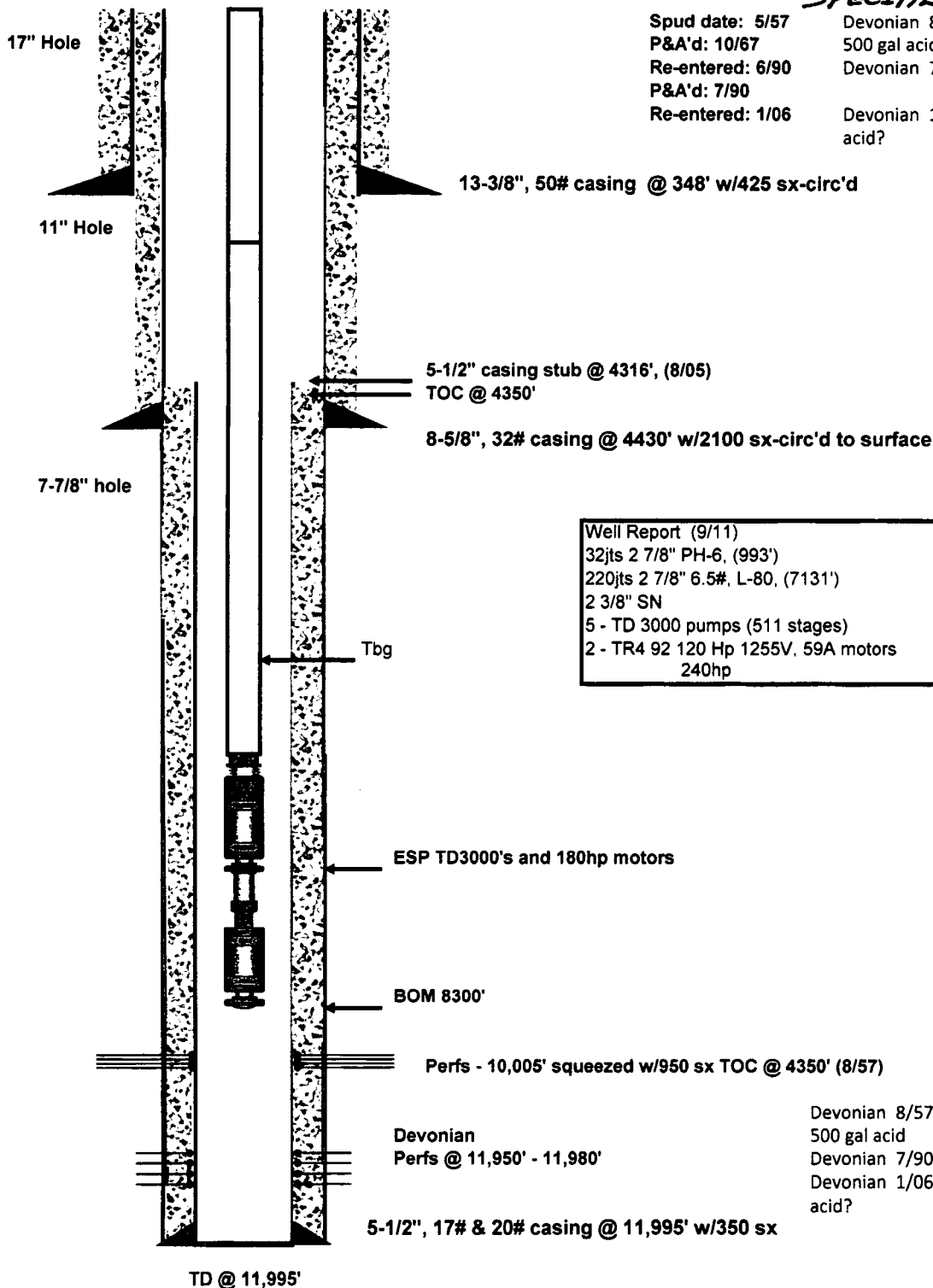
Re-entered: 1/06

Devonian 8/57 IP 2160 bopd F 48/64

500 gal acid

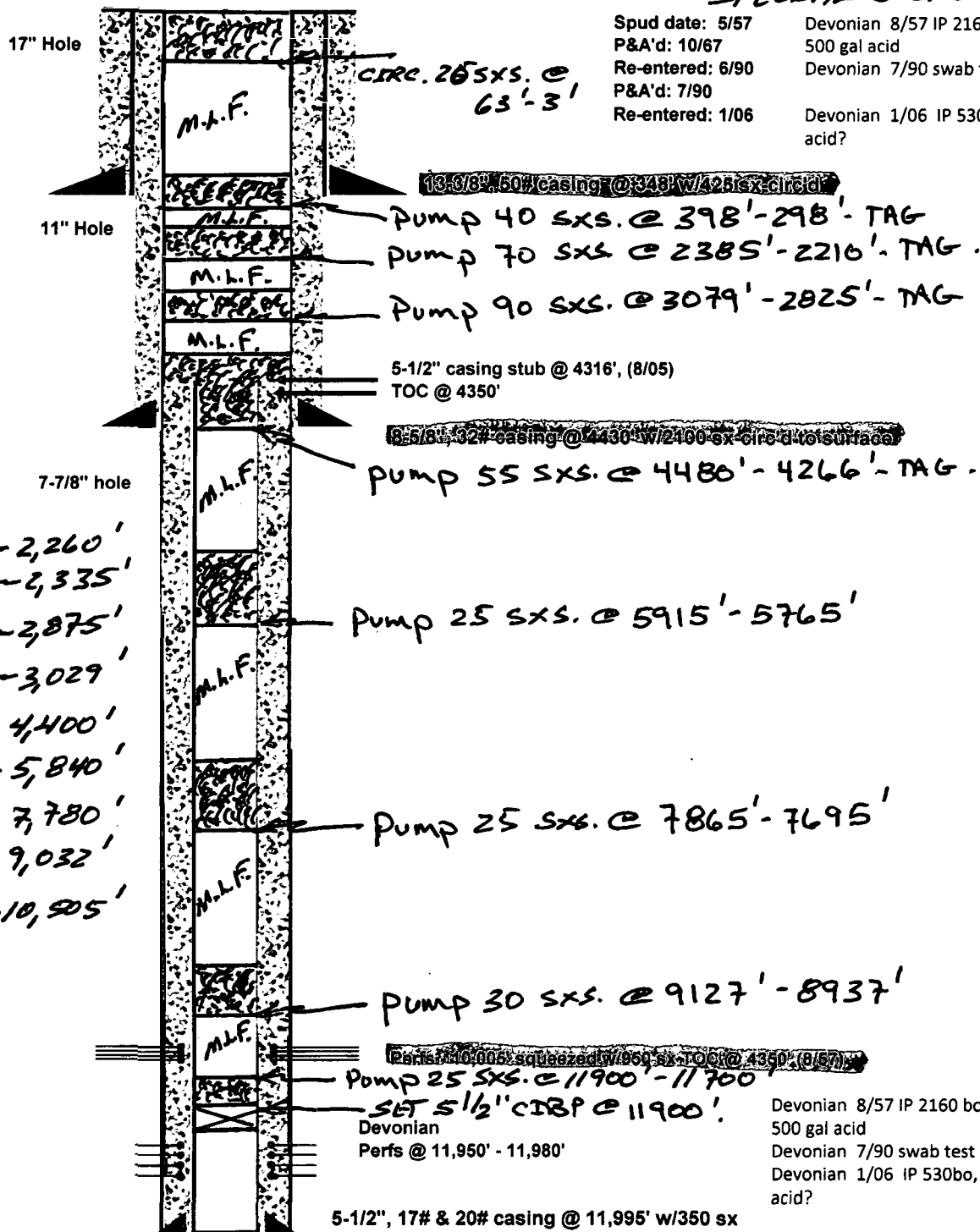
Devonian 7/90 swab test no show 100% w

Devonian 1/06 IP 530bo, 2884 bw on ESP
acid?



GLAD WALLACE #002
30-025-07115

SPECIAL ENERGY CORP.



Spud date: 5/57
P&A'd: 10/67
Re-entered: 6/90
P&A'd: 7/90
Re-entered: 1/06

Devonian 8/57 IP 2160 bopd F 48/64
500 gal acid
Devonian 7/90 swab test no show 100% wtr
Devonian 1/06 IP 530bo, 2884 bw on ESP acid?

T/ANHY - 2,260'
T/SALT - 2,335'
B/SALT - 2,875'
T/YATES - 3,029'
T/S.A. - 4,400'
T/GHOR. - 5,840'
T/ABO. - 7,780'
T/W.C. - 9,032'
T/SUM. - 10,505'

Devonian 8/57 IP 2160 bopd F 48/64
500 gal acid
Devonian 7/90 swab test no show 100% wtr
Devonian 1/06 IP 530bo, 2884 bw on ESP acid?

DAE 09/26/18

GENERAL CONDITIONS OF APPROVAL:

- 1) Insure all bradenheads have been exposed, identified, and valves are operational prior to rigging up on well.
- 2) Contact the appropriate NMOCD District Office no later than 24 hours prior to moving in and rigging up.
- 3) A copy of the approved C103 intent to P&A should be distributed to the onsite company and plugging representatives. Approved procedures are good for a period of one year from approved date, unless otherwise specified on the C103 intent. Approvals past this date will require the submission and approval of a new C103 intent.
- 4) A company representative is required to be present to witness all operations including setting CIBP's, circulation of mud laden fluids, perforating, squeezing or spotting cement plugs, tags, or any other operations approved on the C103 intent to P&A. Company representative should contact the NMOCD and report all operations.
- 5) Any changes that may be required during plugging operations should be approved by the NMOCD before proceeding.
- 6) A closed loop system is to be used for all plugging operations. Contents of the steel pits to be hauled to a NMOCD permitted disposal facility.
- 7) Mud laden fluids must be placed between all cement plugs mixed at 25 sacks of salt gel per 100 barrels of brine.
- 8) All cement plugs will be 100' or 25 sacks cement, whichever is greater. Class 'C' cement will be used above 7500' and Class 'H' below 7500'.