

District I  
1625 N. French Dr., Hobbs, NM 88240  
Phone: (575) 393-6161 Fax: (575) 393-0720  
District II  
811 S. First St., Artesia, NM 88210  
Phone: (575) 748-1283 Fax: (575) 748-9720  
District III  
1000 Rio Brazos Road, Aztec, NM 87410  
Phone: (505) 334-6178 Fax: (505) 334-6170  
District IV  
1220 S. St. Francis Dr., Santa Fe, NM 87505  
Phone: (505) 476-3460 Fax: (505) 476-3462

State of New Mexico  
Energy, Minerals & Natural Resources  
Department  
OIL CONSERVATION DIVISION  
1220 South St. Francis  
Santa Fe, NM 87505

HOBBS OCD  
OCT 04 2018  
RECEIVED

FORM C-102

Revised August 1, 2011

Submit one copy to appropriate

District Office

☐ AMENDED REPORT

WELL LOCATION AND ACREAGE DEDICATION PLAT

|   |   |  |
|---|---|--|
| <sup>1</sup> API Number<br>30-025-44670 | <sup>2</sup> Pool Code<br>96661                   | <sup>3</sup> Pool Name<br>Hardin Tank; BONE SPRING |
| <sup>4</sup> Property Code<br>39673     | <sup>5</sup> Property Name<br>CONDOR 32 STATE     | <sup>6</sup> Well Number<br>#603H                  |
| <sup>7</sup> OGRID No.<br>7377          | <sup>8</sup> Operator Name<br>EOG RESOURCES, INC. | <sup>9</sup> Elevation<br>3319'                    |

<sup>10</sup>Surface Location

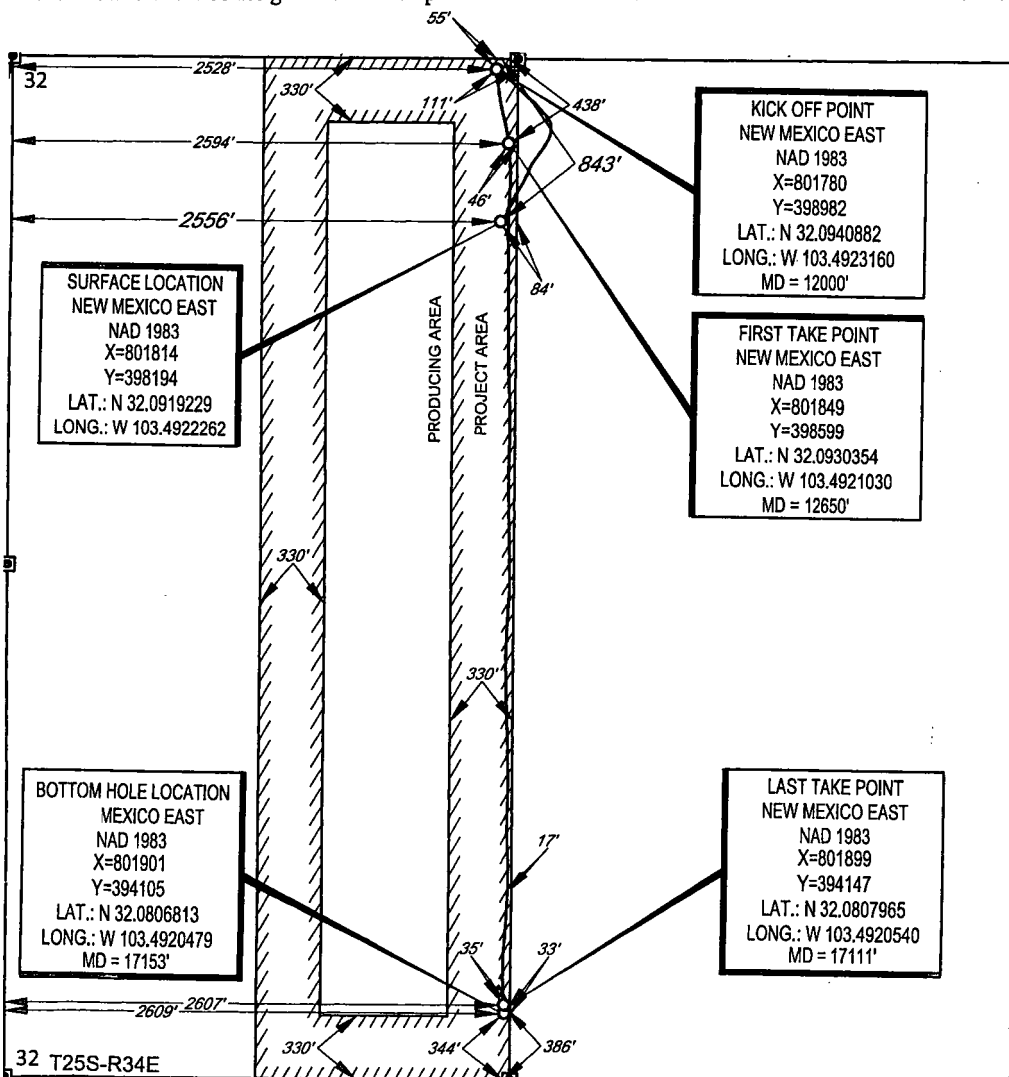
| UL or lot no. | Section | Township | Range | Lot Idn | Feet from the | North/South line | Feet from the | East/West line | County |
|---------------|---------|----------|-------|---------|---------------|------------------|---------------|----------------|--------|
| C             | 32      | 25-S     | 34-E  | -       | 843'          | NORTH            | 2556'         | WEST           | LEA    |

<sup>11</sup>Bottom Hole Location If Different From Surface

| UL or lot no. | Section | Township | Range | Lot Idn | Feet from the | North/South line | Feet from the | East/West line | County |
|---------------|---------|----------|-------|---------|---------------|------------------|---------------|----------------|--------|
| N             | 32      | 25-S     | 34-E  | -       | 344'          | SOUTH            | 2609'         | WEST           | LEA    |

|   |                               |                                  |                         |
|---|-------------------------------|----------------------------------|-------------------------|
| <sup>12</sup> Dedicated Acres<br>160.00 | <sup>13</sup> Joint or Infill | <sup>14</sup> Consolidation Code | <sup>15</sup> Order No. |
|---|-------------------------------|----------------------------------|-------------------------|

No allowable will be assigned to this completion until all interests have been consolidated or a non-standard unit has been approved by the division.



<sup>17</sup>OPERATOR CERTIFICATION

I hereby certify that the information contained herein is true and complete to the best of my knowledge and belief, and that this organization either owns a working interest or unleased mineral interest in the land including the proposed bottom hole location or has a right to drill this well at this location pursuant to a contract with an owner of such a mineral or working interest, or to a voluntary pooling agreement or a compulsory pooling order heretofore entered by the division.

*Kay Maddox* 10/2/2018  
Signature Date

KAY MADDOX  
Printed Name

E-mail Address

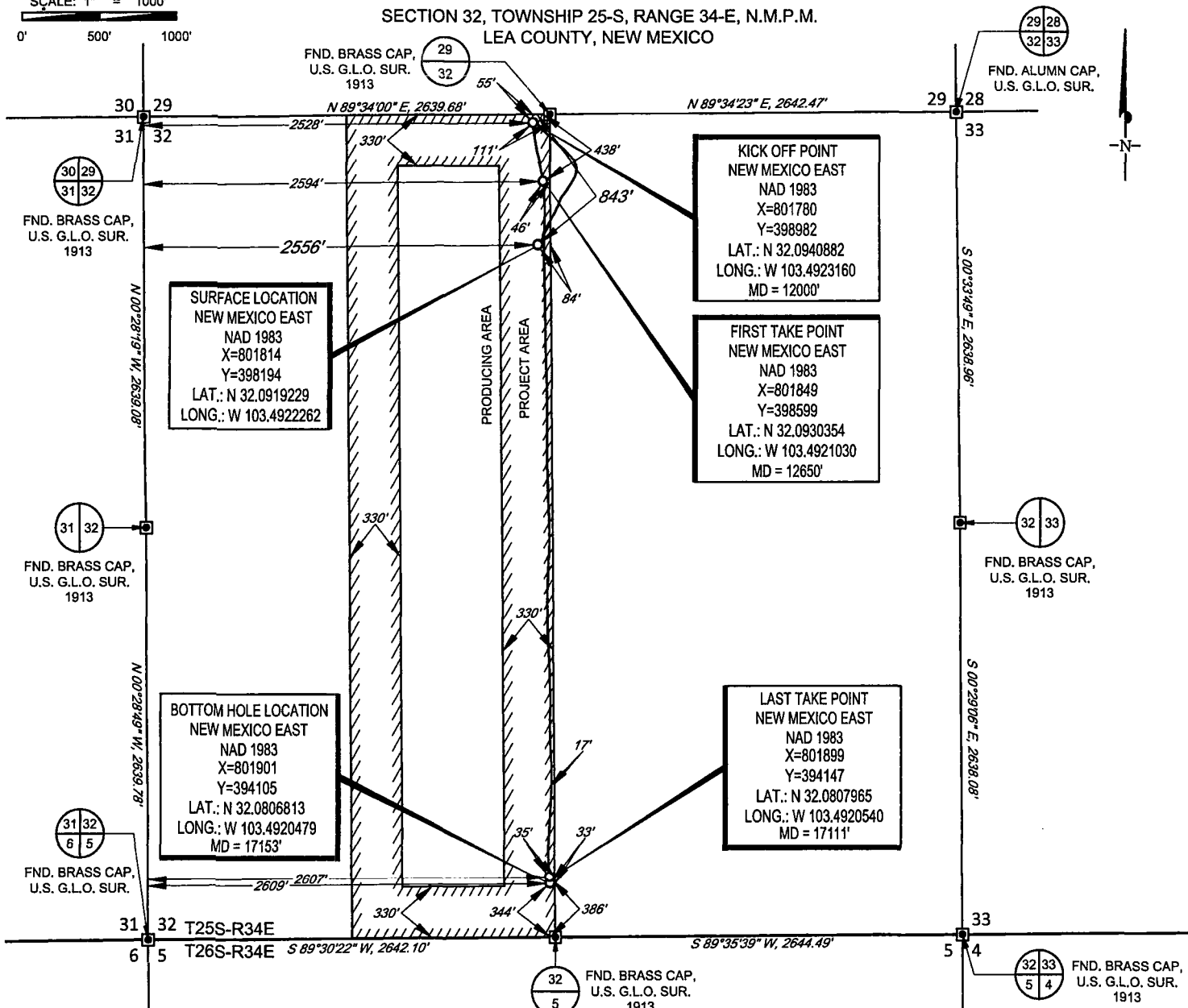
<sup>18</sup>SURVEYOR CERTIFICATION

I hereby certify that the well location shown on this plat was plotted from field notes of actual surveys made by me or under my supervision, and that the same is true to the best of my belief.

04/03/2018  
MICHAEL BROWN  
18329  
Date of Survey  
Signature of Professional Surveyor  
Certificate Number

SCALE: 1" = 1000'

SECTION 32, TOWNSHIP 25-S, RANGE 34-E, N.M.P.M.  
LEA COUNTY, NEW MEXICO



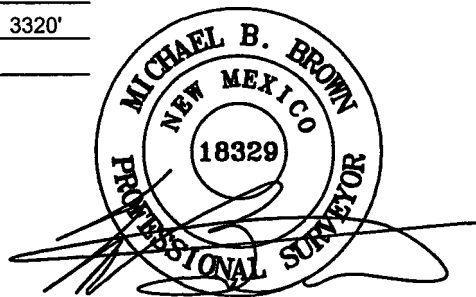
LEASE NAME & WELL NO.: CONDOR 32 STATE #603H  
 SECTION 32 TWP 25-S RGE 34-E SURVEY N.M.P.M.  
 COUNTY LEA STATE NM ELEVATION 3320'  
 DESCRIPTION 843' FNL & 2556' FWL

| POINT | UTM ZONE 13 COORDINATES |                |
|-------|-------------------------|----------------|
| SHL   | X=2107220.957           | Y=11652271.599 |
| KOP   | X=2107182.128           | Y=11653058.765 |
| FTP   | X=2107253.442           | Y=11652676.789 |
| LTP   | X=2107330.865           | Y=11648225.511 |
| BHL   | X=2107333.321           | Y=11648183.626 |



**TOPOGRAPHIC**  
LOYALTY INNOVATION LEGACY

1400 EVERMAN PARKWAY, Ste. 146 • FT. WORTH, TEXAS 76140  
 TELEPHONE: (817) 744-7512 • FAX (817) 744-7554  
 2903 NORTH BIG SPRING • MIDLAND, TEXAS 79705  
 TELEPHONE: (432) 682-1653 OR (800) 767-1653 • FAX (432) 682-1743  
 WWW.TOPOGRAPHIC.COM



Michael Blake Brown, P.S. No. 18329  
 SEPTEMBER 10, 2018

**eg resources, Inc.**

|  |           |
|--|-----------|
| CONDOR 32 STATE<br>#603H<br>AS-DRILLED | REVISION: |
| DATE: 09/10/2018                       |           |
| FILE:AD_CONDOR_32_STATE_603H           |           |
| DRAWN BY: A.V.F.                       |           |
| SHEET: 1 OF 1                          |           |

- NOTES:
1. ORIGINAL DOCUMENT SIZE: 8.5" X 11"
  2. ALL BEARINGS, DISTANCES, AND COORDINATE VALUES CONTAINED HEREIN ARE GRID BASED UPON THE NEW MEXICO COORDINATE SYSTEM OF 1983, EAST ZONE, U.S. SURVEY FEET.
  3. THIS WELL LOCATION SHOWN HEREON HAS BEEN SURVEYED ON THE GROUND UNDER MY SUPERVISION AND PREPARED ACCORDING TO THE EVIDENCE FOUND AT THE TIME OF SURVEY, AND DATA PROVIDED BY EOG RESOURCES, INC. THIS CERTIFICATION IS MADE AND LIMITED TO THOSE PERSONS OR ENTITIES SHOWN ON THE FACE OF THIS PLAT AND IS NON-TRANSFERABLE. THIS SURVEY IS CERTIFIED FOR THIS TRANSACTION ONLY.