

District I
1625 N. French Dr., Hobbs, NM 88240
Phone: (505) 393-6161 Fax: (505) 393-0720
District II
811 S. First St., Artesia, NM 88210
Phone: (505) 748-1283 Fax: (505) 748-9720
District III
1000 Rio Brazos Road, Aztec, NM 87410
Phone: (505) 334-6178 Fax: (505) 334-6170
District IV
1220 S. St. Francis Dr., Santa Fe, NM 87505
Phone: (505) 476-3460 Fax: (505) 476-3462

State of New Mexico
Energy, Minerals & Natural Resources
Department
OIL CONSERVATION DIVISION
1220 South St. Francis Dr.
Santa Fe, NM 87505

HOBBS OCD

OCT 10 2018

RECEIVED

FORM C-102

Revised August 1, 2011

Submit one copy to appropriate

District Office

AMENDED REPORT

WELL LOCATION AND ACREAGE DEDICATION PLAT

¹ API Number 30-025- 44839	² Pool Code 97369	³ Pool Name Red Hills; Bone Spring, East
⁴ Property Code 313188	⁵ Property Name OSPREY 10	⁶ Well Number #301H
⁷ GRID No. 7377	⁸ Operator Name EOG RESOURCES, INC.	⁹ Elevation 3333'

¹⁰Surface Location

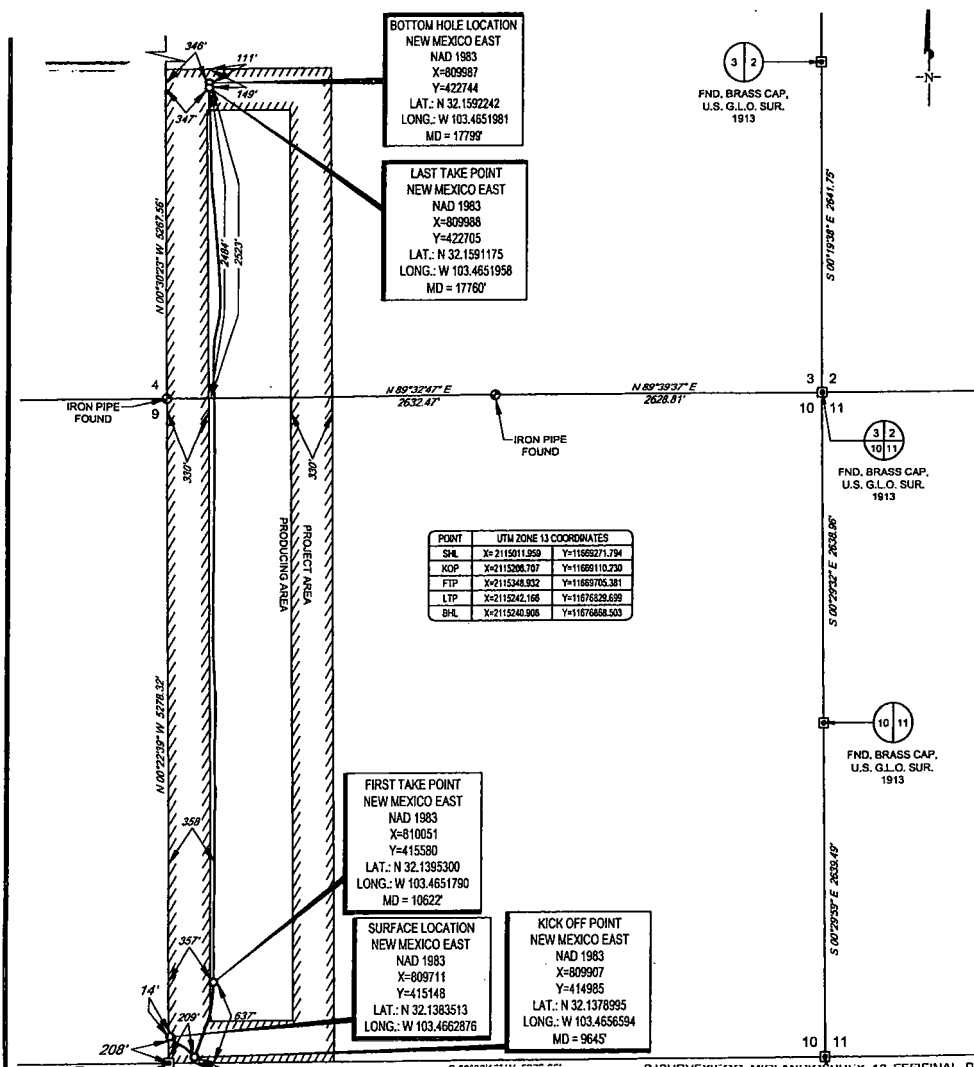
UL or lot no. M	Section 10	Township 25-S	Range 34-E	Lot Idn -	Feet from the 208'	North/South line SOUTH	Feet from the 14'	East/West line WEST	County LEA
---------------------------	----------------------	-------------------------	----------------------	---------------------	------------------------------	----------------------------------	-----------------------------	-------------------------------	----------------------

¹¹Bottom Hole Location If Different From Surface

UL or lot no. L	Section 3	Township 25-S	Range 34-E	Lot Idn -	Feet from the 2523'	North/South line SOUTH	Feet from the 346'	East/West line WEST	County LEA
---------------------------	---------------------	-------------------------	----------------------	---------------------	-------------------------------	----------------------------------	------------------------------	-------------------------------	----------------------

¹² Dedicated Acres 240	¹³ Joint or Infill	¹⁴ Consolidation Code	¹⁵ Order No.
---	-------------------------------	----------------------------------	-------------------------

No allowable will be assigned to this completion until all interests have been consolidated or a non-standard unit has been approved by the division.



¹⁷OPERATOR CERTIFICATION

I hereby certify that the information contained herein is true and complete to the best of my knowledge and belief, and that this organization either owns a working interest or released mineral interest in the land including the proposed bottom hole location, or has a right to drill this well at this location pursuant to a contract with an owner of such a mineral or working interest, or to a voluntary pooling agreement or a compulsory pooling order heretofore entered by the division.

Signature: *Kay Maddox* Date: *10/9/2018*

Printed Name: **KAY MADDOX**

E-mail Address:

¹⁸SURVEYOR CERTIFICATION

I hereby certify that the well location shown on this plat was plotted from field notes of actual surveys made by me or under my supervision, and that the same is true to the best of my belief.

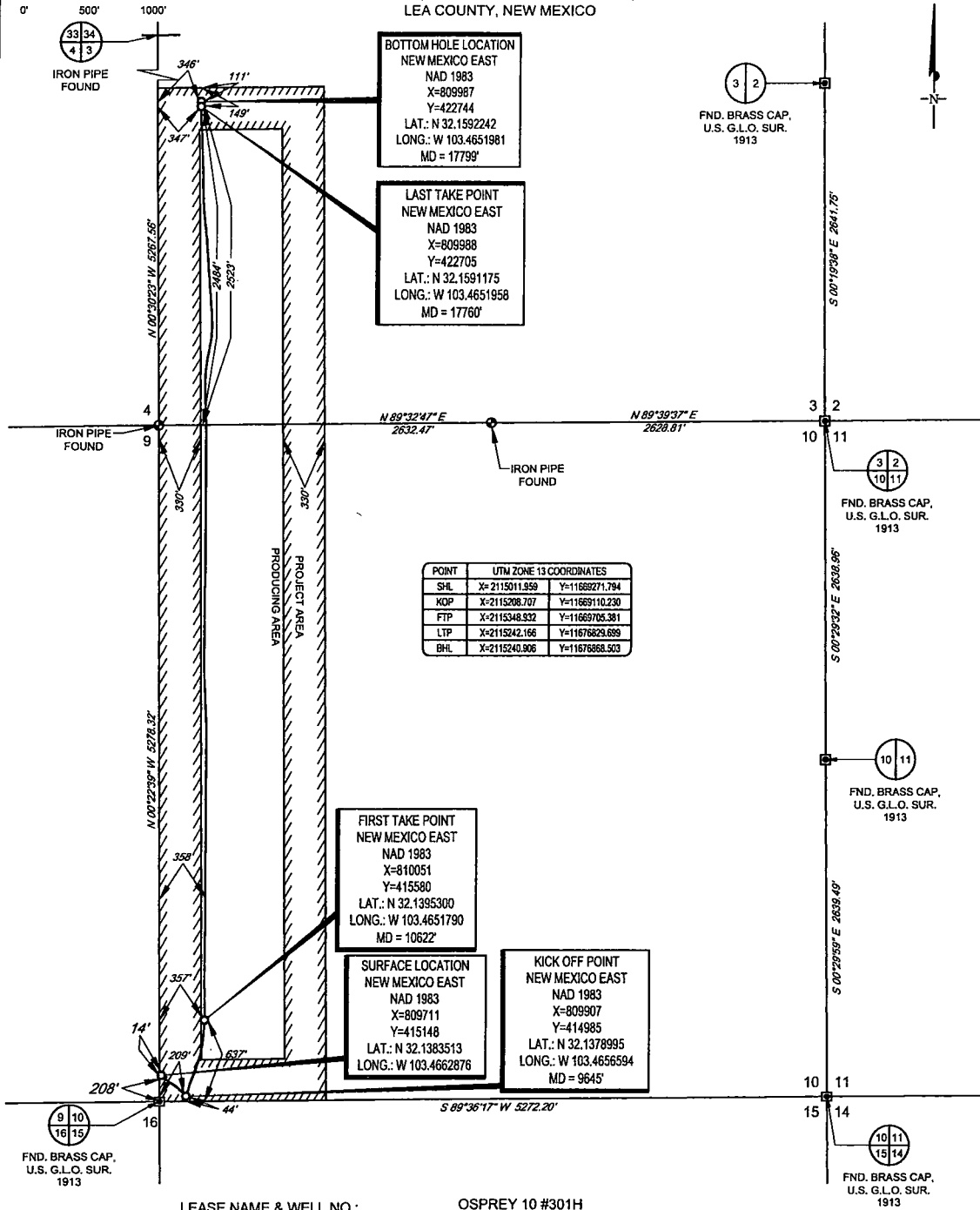
Date of Survey: *05/14/2018*

Signature: *Michael Brown*

Certificate Number: **18329**

SCALE: 1" = 1000'

SECTIONS 3 & 10, TOWNSHIP 25-S, RANGE 34-E, N.M.P.M.
LEA COUNTY, NEW MEXICO



POINT	UTM ZONE 13 COORDINATES
SHL	X=2115011.959 Y=11669271.794
KOP	X=2115208.707 Y=11669110.230
FTP	X=2115348.332 Y=11669705.381
LTP	X=2115242.166 Y=11676829.699
BHL	X=2115240.906 Y=11676858.503

LEASE NAME & WELL NO.: OSPREY 10 #301H
 SECTION 10 TWP 25-S RGE 34-E SURVEY N.M.P.M.
 COUNTY LEA STATE NM ELEVATION 3333'
 DESCRIPTION 208' FSL & 14' FWL

TOPOGRAPHIC
 LOYALTY INNOVATION LEGACY
 1400 EVERMAN PARKWAY, Ste. 146 • FT. WORTH, TEXAS 76140
 TELEPHONE: (817) 744-7512 • FAX (817) 744-7554
 2903 NORTH BIG SPRING • MIDLAND, TEXAS 79705
 TELEPHONE: (432) 682-1653 OR (800) 767-1653 • FAX (432) 682-1743
 WWW.TOPOGRAPHIC.COM

MICHAEL B. BROWN
 NEW MEXICO
 18329
 PROFESSIONAL SURVEYOR

Michael Blake Brown, P.S. No. 18329
 OCTOBER 08, 2018

eg resources, Inc.

OSPREY 10 #301H AS-COMPLETED	REVISION:
DATE: 10/08/18	
FILE:AD_OSPREY_10_301H	
DRAWN BY: IMU	
SHEET: 1 OF 1	

NOTES:
 1. ORIGINAL DOCUMENT SIZE: 8.5" X 11"
 2. ALL BEARINGS, DISTANCES, AND COORDINATE VALUES CONTAINED HEREIN ARE GRID BASED UPON THE NEW MEXICO COORDINATE SYSTEM OF 1983, EAST ZONE, U.S. SURVEY FEET.
 3. THIS WELL LOCATION SHOWN HEREON HAS BEEN SURVEYED ON THE GROUND UNDER MY SUPERVISION AND PREPARED ACCORDING TO THE EVIDENCE FOUND AT THE TIME OF SURVEY, AND DATA PROVIDED BY EOG RESOURCES, INC. THIS CERTIFICATION IS MADE AND LIMITED TO THOSE PERSONS OR ENTITIES SHOWN ON THE FACE OF THIS PLAT AND IS NON-TRANSFERABLE. THIS SURVEY IS CERTIFIED FOR THIS TRANSACTION ONLY.