

District I
1625 N. French Dr., Hobbs, NM 88240
Phone: (575) 393-6161 Fax: (575) 393-0720
District II
811 S. First St., Artesia, NM 88210
Phone: (575) 748-1283 Fax: (575) 748-9720
District III
1000 Rio Brazos Road, Aztec, NM 87410
Phone: (505) 334-6178 Fax: (505) 334-6170
District IV
1220 S. St. Francis Dr., Santa Fe, NM 87505
Phone: (505) 476-3460 Fax: (505) 476-3462

State of New Mexico
Energy, Minerals & Natural Resources
Department
OIL CONSERVATION DIVISION
1220 South St. Francis Dr.
Santa Fe, NM 87505

FORM C-102

Revised August 1, 2011

Submit one copy to appropriate

District Office

OCT 09 2013
RECEIVED

☐ AMENDED REPORT

WELL LOCATION AND ACREAGE DEDICATION PLAT

¹ API Number 30-025- 44674	² Pool Code 96661	³ Pool Name HARDIN TANK; BONE SPRING
⁴ Primary Code 320995	⁵ Property Name CONDOR 32 STATE COM	
⁷ GRID No. 7377	⁶ Operator Name EOG RESOURCES, INC.	⁸ Well Number 6144
		⁹ Elevation 3340'

¹⁰Surface Location

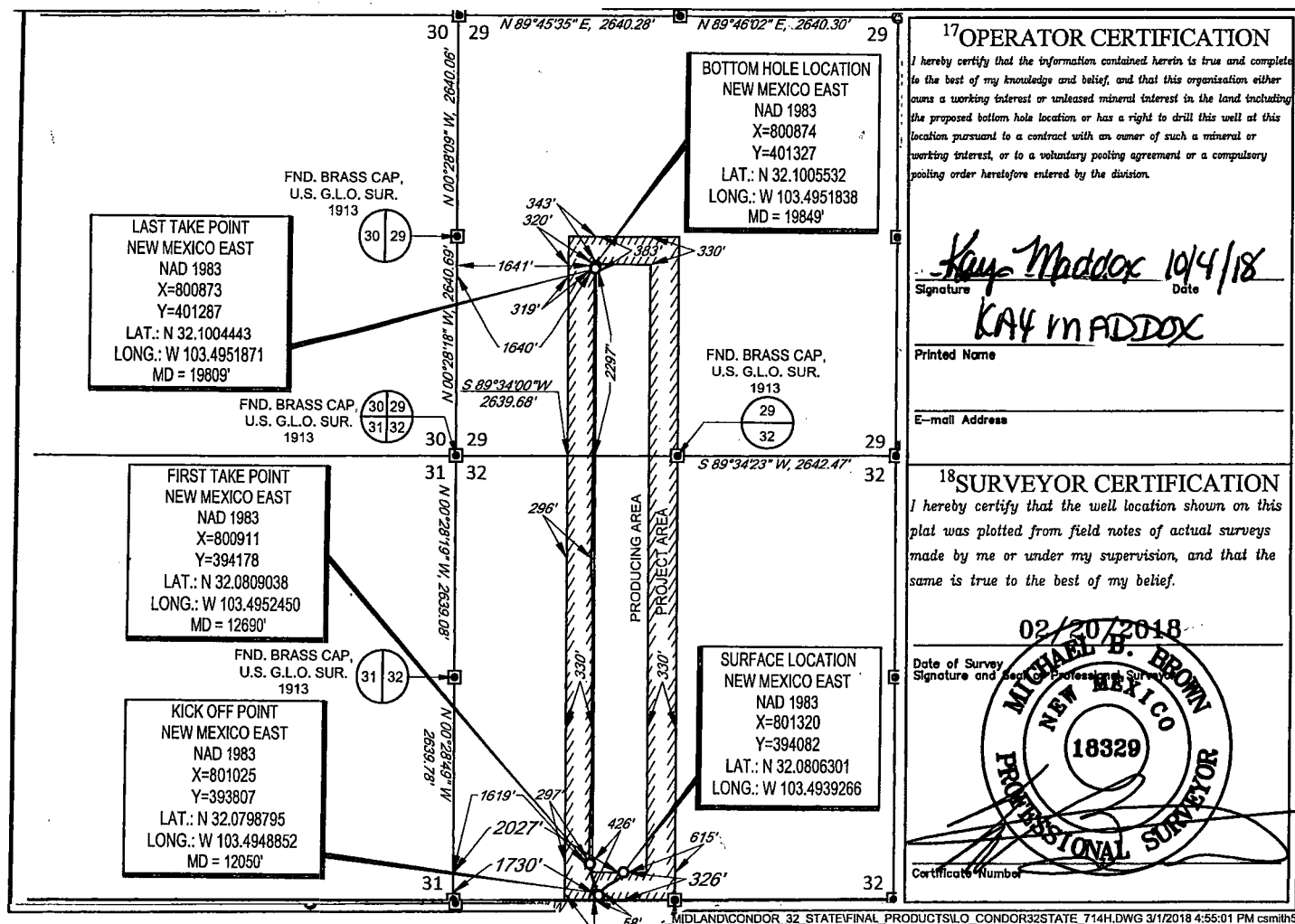
UL or lot no.	Section	Township	Range	Lot Idn	Feet from the	North/South line	Feet from the	East/West line	County
N	32	25-S	34-E	-	326'	SOUTH	2027'	WEST	LEA

¹¹Bottom Hole Location If Different From Surface

UL or lot no.	Section	Township	Range	Lot Idn	Feet from the	North/South line	Feet from the	East/West line	County
K	29	25-S	34-E	-	2410'	South	2080'	WEST	LEA

¹² Dedicated Acres 240.00	¹³ Joint or Infill	¹⁴ Consolidation Code	¹⁵ Order No.
--	-------------------------------	----------------------------------	-------------------------

No allowable will be assigned to this completion until all interests have been consolidated or a non-standard unit has been approved by the division.



SCALE: 1" = 2000'

0' 1000' 2000'

SECTION 32, TOWNSHIP 25-S, RANGE 34-E, N.M.P.M.
LEA COUNTY, NEW MEXICO

HOBBS OCD

OCT 09 2018

RECEIVED

LAST TAKE POINT
NEW MEXICO EAST
NAD 1983
X=800873
Y=401287
LAT.: N 32.1004443
LONG.: W 103.4951871
MD = 19809'

FIRST TAKE POINT
NEW MEXICO EAST
NAD 1983
X=800911
Y=394178
LAT.: N 32.0809038
LONG.: W 103.4952450
MD = 12690'

KICK OFF POINT
NEW MEXICO EAST
NAD 1983
X=801025
Y=393807
LAT.: N 32.0798795
LONG.: W 103.4948852
MD = 12050'

BOTTOM HOLE LOCATION
NEW MEXICO EAST
NAD 1983
X=800874
Y=401327
LAT.: N 32.1005532
LONG.: W 103.4951838
MD = 19849'

SURFACE LOCATION
NEW MEXICO EAST
NAD 1983
X=801320
Y=394082
LAT.: N 32.0806301
LONG.: W 103.4939266

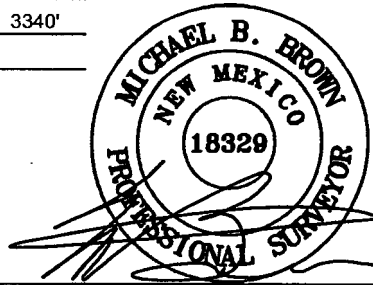
POINT	UTM ZONE 13 COORDINATES	
SHL	X=2106751.826	Y=11648156.877
KOP	X=2106458.791	Y=11647879.736
FTP	X=2106342.172	Y=11648250.743
LTP	X=2106260.924	Y=11655358.160
BHL	X=2106261.288	Y=11655390.827

LEASE NAME & WELL NO.: CONDOR 32 STATE #614H
SECTION 32 TWP. 25-S RGE 34-E SURVEY N.M.P.M.
COUNTY LEA STATE NM ELEVATION 3340'
DESCRIPTION 326' FSL & 2027' FWL



TOPOGRAPHIC
LOYALTY INNOVATION LEGACY

1400 EVERMAN PARKWAY, Ste. 146 • FT. WORTH, TEXAS 76140
TELEPHONE: (817) 744-7512 • FAX: (817) 744-7554
2903 NORTH BIG SPRING • MIDLAND, TEXAS 79705
TELEPHONE: (432) 682-1853 OR (800) 767-1653 • FAX: (432) 682-1743
WWW.TOPOGRAPHIC.COM



Michael Blake Brown, P.S. No. 18329
SEPTEMBER 13, 2018



CONDOR 32 STATE #614H AS-DRILLED	REVISION:
DATE: 09/13/18	
FILE: C_CONDOR32STATE_614	
DRAWN BY: JDR	
SHEET: 1 OF 1	

NOTES:
1. ORIGINAL DOCUMENT SIZE: 8.5" X 11"
2. ALL BEARINGS, DISTANCES, AND COORDINATE VALUES CONTAINED HEREIN ARE GRID BASED UPON THE NEW MEXICO COORDINATE SYSTEM OF 1983, EAST ZONE, U.S. SURVEY FEET.
3. THIS WELL LOCATION SHOWN HEREON HAS BEEN SURVEYED ON THE GROUND UNDER MY SUPERVISION AND PREPARED ACCORDING TO THE EVIDENCE FOUND AT THE TIME OF SURVEY, AND DATA PROVIDED BY EOG RESOURCES, INC. THIS CERTIFICATION IS MADE AND LIMITED TO THOSE PERSONS OR ENTITIES SHOWN ON THE FACE OF THIS PLAT AND IS NON-TRANSFERABLE. THIS SURVEY IS CERTIFIED FOR THIS TRANSACTION ONLY.