

# HOBBS OCD

Form 3160-4  
(August 2007)

UNITED STATES  
DEPARTMENT OF THE INTERIOR  
BUREAU OF LAND MANAGEMENT

OCD Hobbs

FORM APPROVED  
OMB No. 1004-0137  
Expires: July 31, 2010

OCT 24 2018

## WELL COMPLETION OR RECOMPLETION REPORT AND LOG

RECEIVED

5. Lease Serial No.  
NMNM112279

1a. Type of Well ☒ Oil Well ☐ Gas Well ☐ Dry ☐ Other  
b. Type of Completion ☒ New Well ☐ Work Over ☐ Deepen ☐ Plug Back ☐ Diff. Resvr.  
Other \_\_\_\_\_

6. If Indian, Allottee or Tribe Name

7. Unit or CA Agreement Name and No.

2. Name of Operator  
EOG RESOURCES INCORPORATED  
Contact: KAY MADDOX  
E-Mail: KAY\_MADDOX@EOGRESOURCES.COM

8. Lease Name and Well No.  
FOX 30 FED COM 705H

3. Address  
MIDLAND, TX 79702

3a. Phone No. (include area code)  
Ph: 432-686-3658

9. API Well No.  
30-025-44557-00-S1

4. Location of Well (Report location clearly and in accordance with Federal requirements)\*  
Sec 30 T25S R34E Mer NMP  
At surface NWSE 2192FSL 1928FEL 32.100262 N Lat, 103.506708 W Lon  
Sec 30 T25S R34E Mer NMP  
At top prod interval reported below NWSE 2303FSL 1701FEL 32.100568 N Lat, 103.505977 W Lon  
Sec 31 T25S R34E Mer NMP  
At total depth SWSE 230FSL 1651FEL 32.080400 N Lat, 103.505871 W Lon

10. Field and Pool, or Exploratory  
BOBCAT DRAW-UPR WOLFCAMP

11. Sec., T., R., M., or Block and Survey  
or Area Sec 30 T25S R34E Mer NMP

12. County or Parish  
LEA

13. State  
NM

14. Date Spudded  
03/21/2018

15. Date T.D. Reached  
06/10/2018

16. Date Completed  
☐ D & A ☒ Ready to Prod.  
07/25/2018

17. Elevations (DF, KB, RT, GL)\*  
3324 GL

18. Total Depth: MD 20178  
TVD 12655

19. Plug Back T.D.: MD 20078  
TVD 12655

20. Depth Bridge Plug Set: MD  
TVD

21. Type Electric & Other Mechanical Logs Run (Submit copy of each)  
NONE

22. Was well cored? ☒ No ☐ Yes (Submit analysis)  
Was DST run? ☒ No ☐ Yes (Submit analysis)  
Directional Survey? ☐ No ☒ Yes (Submit analysis)

### 23. Casing and Liner Record (Report all strings set in well)

Hole Size	Size/Grade	Wt. (#/ft.)	Top (MD)	Bottom (MD)	Stage Cementer Depth	No. of Sk. & Type of Cement	Slurry Vol. (BBL)	Cement Top*	Amount Pulled
17.500	13.375 J-55	54.5	0	1071		970		0	
12.250	9.625 J-55	40.0	0	5171		1785		0	
8.750	7.625 HCP-110	29.7	0	11935		475		3618	
6.750	5.500 ECP-110	23.0	0	20163		780		10700	

### 24. Tubing Record

Size	Depth Set (MD)	Packer Depth (MD)	Size	Depth Set (MD)	Packer Depth (MD)	Size	Depth Set (MD)	Packer Depth (MD)

### 25. Producing Intervals

Formation	Top	Bottom	Perforated Interval	Size	No. Holes	Perf. Status
A) WOLFCAMP	12835	20078	12835 TO 20078	3.000	1536	OPEN - Wolfcamp
B)						
C)						
D)						

### 26. Perforation Record

### 27. Acid, Fracture, Treatment, Cement Squeeze, Etc.

Depth Interval	Amount and Type of Material
12835 TO 20078	FRAC W/18,169,912 LBS PROPPANT;213,764 BBLs LOAD FLUID

### 28. Production - Interval A

Date First Produced	Test Date	Hours Tested	Test Production	Oil BBL	Gas MCF	Water BBL	Oil Gravity Corr. API	Gas Gravity	Production Method
07/25/2018	08/01/2018	24	→	3096.0	5094.0	6107.0	40.0		FLOW FROM WELL
Choke Size	Tbg. Press. Flwg.	Csg. Press.	24 Hr. Rate	Oil BBL	Gas MCF	Water BBL	Gas:Oil Ratio	Well Status	
64	SI	1374.0	→	3096	5094	6107	1646	POW	ACCEPTED FOR RECORD

### 28a. Production - Interval B

Date First Produced	Test Date	Hours Tested	Test Production	Oil BBL	Gas MCF	Water BBL	Oil Gravity Corr. API	Gas Gravity	Production Method
			→						
Choke Size	Tbg. Press. Flwg.	Csg. Press.	24 Hr. Rate	Oil BBL	Gas MCF	Water BBL	Gas:Oil Ratio	Well Status	
	SI		→						

(See Instructions and spaces for additional data on reverse side)

ELECTRONIC SUBMISSION #430375 VERIFIED BY THE BLM WELL INFORMATION SYSTEM

\*\* BLM REVISED \*\* BLM REVISED \*\* BLM REVISED \*\* BLM REVISED \*\* BLM REVISED \*\*

Reclamation Due: 1/25/2019

OCT 22 2018

BUREAU OF LAND MANAGEMENT  
CARLSBAD FIELD OFFICE

## 28b. Production - Interval C

Date First Produced	Test Date	Hours Tested	Test Production →	Oil BBL	Gas MCF	Water BBL	Oil Gravity Corr. API	Gas Gravity	Production Method
Choke Size	Tbg. Press. Flwg. SI	Csg. Press.	24 Hr. Rate →	Oil BBL	Gas MCF	Water BBL	Gas:Oil Ratio	Well Status	

## 28c. Production - Interval D

Date First Produced	Test Date	Hours Tested	Test Production →	Oil BBL	Gas MCF	Water BBL	Oil Gravity Corr. API	Gas Gravity	Production Method
Choke Size	Tbg. Press. Flwg. SI	Csg. Press.	24 Hr. Rate →	Oil BBL	Gas MCF	Water BBL	Gas:Oil Ratio	Well Status	

29. Disposition of Gas(Sold, used for fuel, vented, etc.)  
SOLD

## 30. Summary of Porous Zones (Include Aquifers):

Show all important zones of porosity and contents thereof: Cored intervals and all drill-stem tests, including depth interval tested, cushion used, time tool open, flowing and shut-in pressures and recoveries.

## 31. Formation (Log) Markers

Formation	Top	Bottom	Descriptions, Contents, etc.	Name	Top Meas. Depth
RUSTLER	940		BARREN	RUSTLER	940
TOP OF SALT	1240		BARREN	TOP OF SALT	1240
BASE OF SALT	4950		BARREN	BASE OF SALT	4950
BRUSHY CANYON	7830		OIL & GAS	BRUSHY CANYON	7830
BONE SPRING 1ST	10315		OIL & GAS	BONE SPRING 1ST	10315
BONE SPRING 2ND	10835		OIL & GAS	BONE SPRING 2ND	10835
BONE SPRING 3RD	11895		OIL & GAS	BONE SPRING 3RD	11895
WOLFCAMP	12365		OIL & GAS	WOLFCAMP	12365

32. Additional remarks (include plugging procedure):  
PLEASE REFERENCE ATTACHMENTS

PLEASE NOTE POOL CHANGE - BOBCAT DRAW; UPPER WOLFCAMP

RAN CEMENT BOND LOG - TOC OF CEMENT FOR 5 1/2" CSG WAS @ 10,700', DETERMINED BY CBL

## 33. Circle enclosed attachments:

- |   |                    |               |                       |
|---|--------------------|---------------|-----------------------|
| 1. Electrical/Mechanical Logs (1 full set req'd.)     | 2. Geologic Report | 3. DST Report | 4. Directional Survey |
| 5. Sundry Notice for plugging and cement verification | 6. Core Analysis   | 7. Other:     |                       |

## 34. I hereby certify that the foregoing and attached information is complete and correct as determined from all available records (see attached instructions):

Electronic Submission #430375 Verified by the BLM Well Information System.

For EOG RESOURCES INCORPORATED, sent to the Hobbs

Committed to AFMSS for processing by DUNCAN WHITLOCK on 09/06/2018 (18DW0241SE)

Name (please print) KAY MADDOX

Title REGULATORY SPECIALIST

Signature (Electronic Submission)

Date 08/08/2018

Title 18 U.S.C. Section 1001 and Title 43 U.S.C. Section 1212, make it a crime for any person knowingly and willfully to make to any department or agency of the United States any false, fictitious or fraudulent statements or representations as to any matter within its jurisdiction.

**\*\* REVISED \*\* REVISED \*\* REVISED \*\* REVISED \*\* REVISED \*\* REVISED \*\* REVISED \*\***

District I  
1625 N French Dr., Hobbs, NM 88240  
Phone (575) 393-6161 Fax (575) 393-0720  
District II  
811 S First St., Artesia, NM 88210  
Phone (575) 748-1283 Fax (575) 748-9720  
District III  
1000 Rio Brazos Road, Aztec, NM 87410  
Phone (505) 334-6178 Fax (505) 334-6170  
District IV  
1220 S St. Francis Dr., Santa Fe, NM 87505  
Phone (505) 476-3460 Fax (505) 476-3462

State of New Mexico  
Energy, Minerals & Natural Resources  
Department  
OIL CONSERVATION DIVISION  
1220 South St. Francis Dr.  
Santa Fe, NM 87505

FORM C-102  
Revised August 1, 2011  
Submit one copy to appropriate  
District Office

☐ AMENDED REPORT

WELL LOCATION AND ACREAGE DEDICATION PLAT

<sup>1</sup> API Number 30-025-44557	<sup>2</sup> Pool Code 98094	<sup>3</sup> Pool Name BOBCAT DRAW; UPPER WOLF CAMP
<sup>4</sup> Property Code 318097	<sup>5</sup> Property Name FOX 30 FED COM	<sup>6</sup> Well Number #705H
<sup>7</sup> OGRID No. 7377	<sup>8</sup> Operator Name EOG RESOURCES, INC.	<sup>9</sup> Elevation 3324'

<sup>10</sup> Surface Location									
UL or lot no.	Section	Township	Range	Lot Idn	Feet from the	North/South line	Feet from the	East/West line	County
J	30	25-S	34-E	-	2192'	SOUTH	1928'	EAST	LEA

UL or lot no.	Section	Township	Range	Lot Idn	Feet from the	North/South line	Feet from the	East/West line	County
0	31	25-S	34-E	-	230'	SOUTH	1651'	EAST	LEA

<sup>12</sup> Dedicated Acres 240.00	<sup>13</sup> Joint or Infill	<sup>14</sup> Consolidation Code	<sup>15</sup> Order No.
---	-------------------------------	----------------------------------	-------------------------

No allowable will be assigned to this completion until all interests have been consolidated or a non-standard unit has been approved by the division.

POINT	UTM X (Easting)	UTM Y (Northing)
1	1110350.278	1110350.278
2	1110350.278	1110350.278
3	1110350.278	1110350.278
4	1110350.278	1110350.278
5	1110350.278	1110350.278
6	1110350.278	1110350.278

<sup>17</sup>OPERATOR CERTIFICATION

I hereby certify that the information contained herein is true and complete to the best of my knowledge and belief, and that this organization either owns a working interest or undivided mineral interest in the land including the proposed bottom hole location or has a right to drill this well at this location pursuant to a contract with an owner of such a mineral or working interest, or to a voluntary pooling agreement or a compulsory pooling order heretofore entered by the division.

Signature: *Kay Maddox* Date: 8/7/18

Printed Name: KAY MADDOX

E-mail Address:

<sup>18</sup>SURVEYOR CERTIFICATION

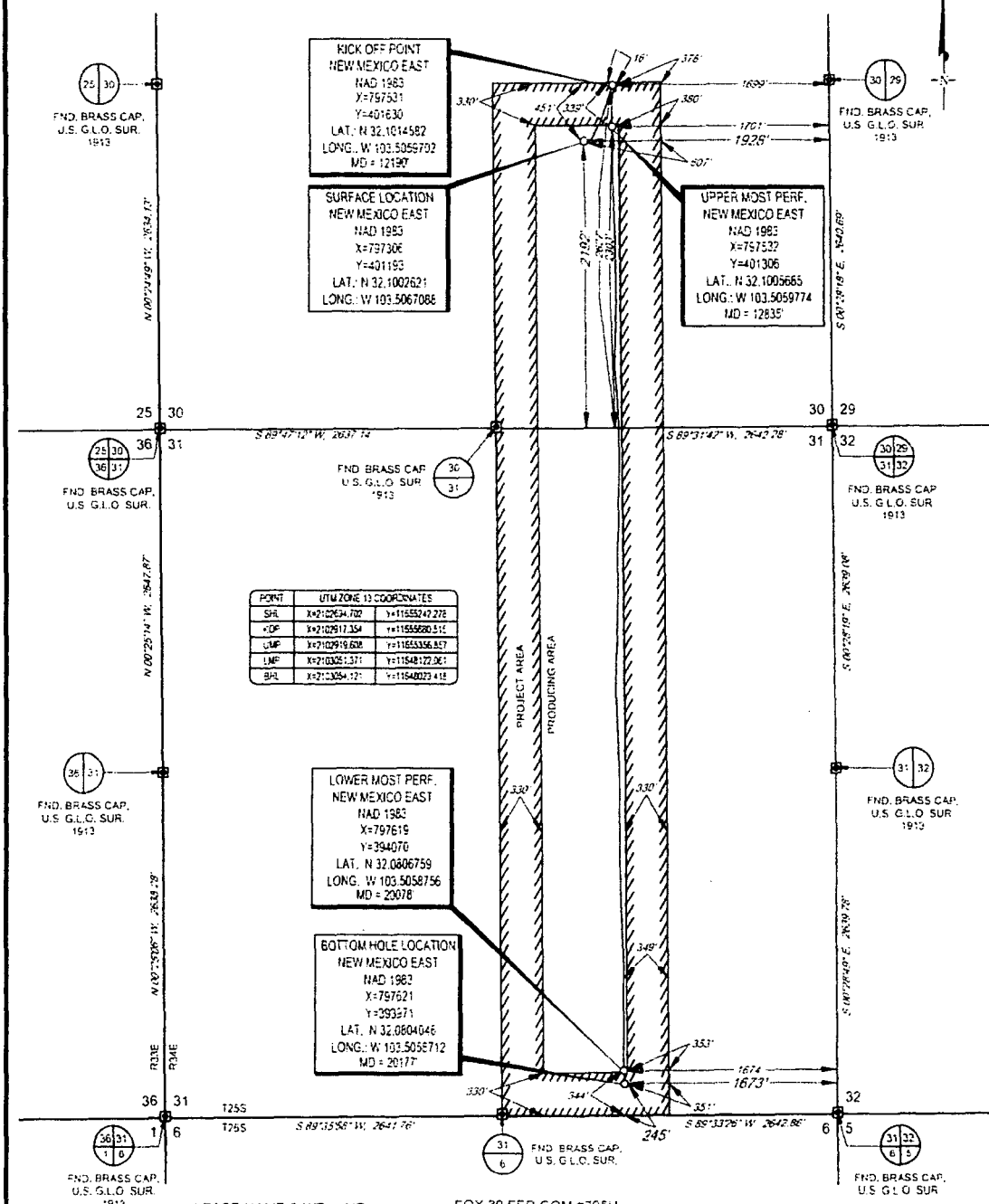
I hereby certify that the well location shown on this plat was plotted from field notes of actual surveys made by me or under my supervision, and that the same is true to the best of my belief.

Date of Survey: 8/7/2017  
Signature: *Michael Brown*

Certificate Number: 18329

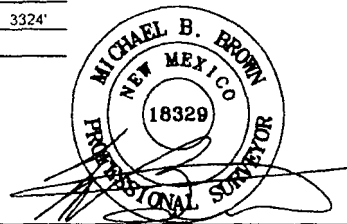
SCALE: 1" = 1000'  
5 530 1000'

SECTION 30, TOWNSHIP 25-S, RANGE 34-E, N.M.P.M.  
LEA COUNTY, NEW MEXICO



**TOPOGRAPHIC**  
LOYALTY INNOVATION LEGACY

1400 EVERMAN PARKWAY, DR. 140, FT. WORTH, TEXAS 76146  
TELEPHONE (817) 744-7512 • FAX (817) 744-7514  
TELETYPE (817) 744-7514 • WWW.TPOGRAPHIC.COM



Michael Blake Brown, P.S. No. 18329  
JULY 17, 2018

**Geog resources, Inc.**

REVISION:	NOTES	
	INT	DATE
1		
2		
3		
4		
5		
6		
7		
8		
9		
10		
11		
12		
13		
14		
15		
16		
17		
18		
19		
20		
21		
22		
23		
24		
25		
26		
27		
28		
29		
30		
31		
32		
33		
34		
35		
36		
37		
38		
39		
40		
41		
42		
43		
44		
45		
46		
47		
48		
49		
50		
51		
52		
53		
54		
55		
56		
57		
58		
59		
60		
61		
62		
63		
64		
65		
66		
67		
68		
69		
70		
71		
72		
73		
74		
75		
76		
77		
78		
79		
80		
81		
82		
83		
84		
85		
86		
87		
88		
89		
90		
91		
92		
93		
94		
95		
96		
97		
98		
99		
100		