

District I
1625 N. French Dr., Hobbs, NM 88240
Phone: (575) 393-6161 Fax: (575) 393-0720
District II
811 S. First St., Artesia, NM 88201
Phone: (575) 748-1283 Fax: (575) 748-9720
District III
1000 Rio Brazos Road, Aztec, NM 87410
Phone: (505) 334-6178 Fax: (505) 334-6170
District IV
1220 S. St. Francis Dr., Santa Fe, NM 87505
Phone: (505) 476-3460 Fax: (505) 476-3460

State of New Mexico

Energy, Minerals & Natural Resources Department

OIL CONSERVATION DIVISION

1220 South St. Francis Dr.

Santa Fe, NM 87505

Form C-102

Revised August 1, 2011

Submit one copy to appropriate

District Office

☐ AMENDED REPORT

WELL LOCATION AND ACREAGE DEDICATION PLAT

| | | |
|--|---|---|
| ¹ API Number 30-025-45302 | ² Pool Code 8415 21690 | ³ Pool Name E-K BUFFALO, BONE SPRING |
| ⁴ Property Code 722767 | ⁵ Property Name MESCALERO 6 FED COM 2BS | |
| ⁷ OGRID No. 372137 | ⁸ Operator Name CHISHOLM ENERGY OPERATING, LLC | ⁶ Well Number 8H |
| | | ⁹ Elevation 3789.3 |

¹⁰ Surface Location

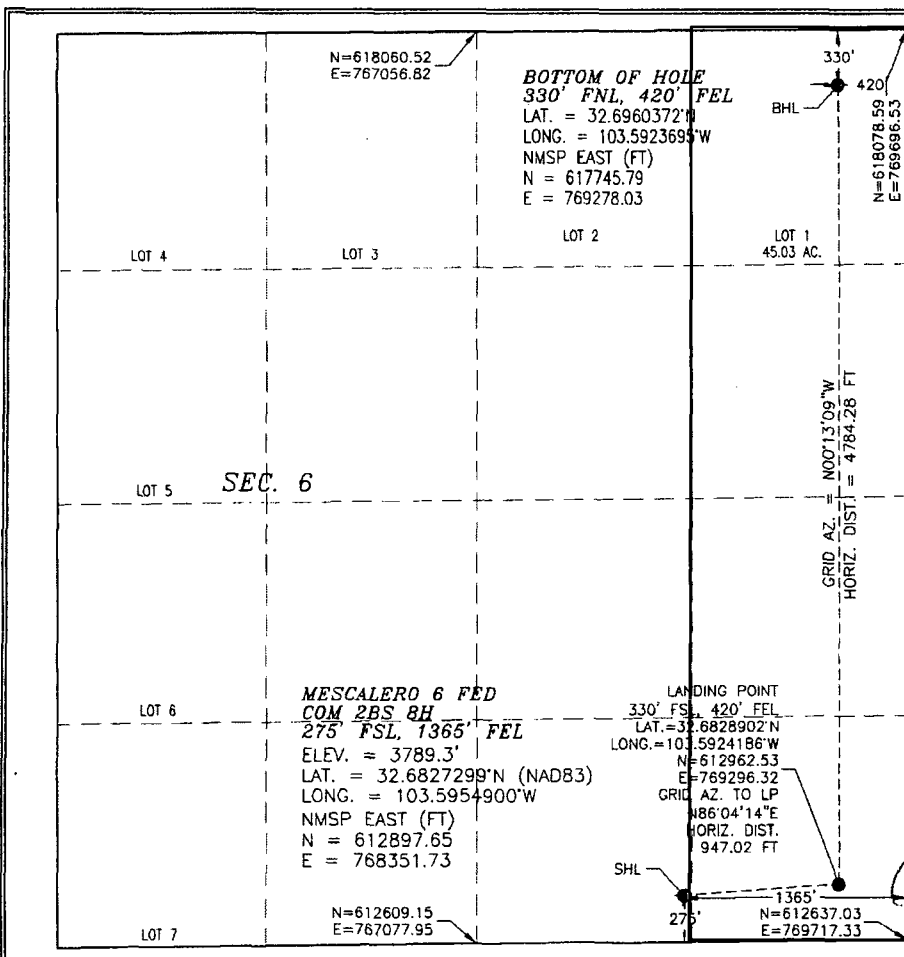
| UL or lot no. | Section | Township | Range | Lot Idn | Feet from the | North/South line | Feet from the | East/West line | County |
|---------------|----------|-------------|-------------|---------|---------------|------------------|---------------|----------------|------------|
| O | 6 | 19 S | 34 E | | 275 | SOUTH | 1365 | EAST | LEA |

¹¹ Bottom Hole Location If Different From Surface

| UL or lot no. | Section | Township | Range | Lot Idn | Feet from the | North/South line | Feet from the | East/West line | County |
|---------------|----------|-------------|-------------|---------|---------------|------------------|---------------|----------------|------------|
| 1 | 6 | 19 S | 34 E | | 330 | NORTH | 420 | EAST | LEA |

| | | | |
|--|-------------------------------|----------------------------------|-------------------------|
| ¹² Dedicated Acres 165.29 | ¹³ Joint or Infill | ¹⁴ Consolidation Code | ¹⁵ Order No. |
|--|-------------------------------|----------------------------------|-------------------------|

No allowable will be assigned to this completion until all interests have been consolidated or a non-standard unit has been approved by the division.



¹⁷ OPERATOR CERTIFICATION

I hereby certify that the information contained herein is true and complete to the best of my knowledge and belief, and that this organization either owns a working interest or unleased mineral interest in the land including the proposed bottom hole location or has a right to drill this well at this location pursuant to a contract with an owner of such a mineral or working interest, or to a voluntary pooling agreement or a compulsory pooling order heretofore entered by the division.

Jennifer Elrod 01/24/2018
Signature Date

JENNIFER ELROD

Printed Name

jelrod@chisholmenergy.com

E-mail Address

¹⁸ SURVEYOR CERTIFICATION

I hereby certify that the well location shown on this plat was plotted from field notes of actual surveys made by me or under my supervision, and that the same is true and correct to the best of my belief.

NOVEMBER 3, 2011

Date of Survey

Signature and Seal of Professional Surveyor:

Certificate Number: 12797

SURVEY NO. 5728

