

HOBBS OCD
UNITED STATES
DEPARTMENT OF THE INTERIOR
BUREAU OF LAND MANAGEMENT
OCD Hobbs
WELL COMPLETION OR RECOMPLETION REPORT AND LOGFORM APPROVED
OMB No. 1004-0137
Expires: July 31, 20105. Lease Serial No.
NMNM1122791a. Type of Well ☒ Gas well ☐ Dry ☐ Other
b. Type of Completion ☒ New Well ☐ Work Over ☐ Deepen ☐ Plug Back ☐ Diff. Resvr.
Other

6. If Indian, Allottee or Tribe Name

7. Unit or CA Agreement Name and No.

2. Name of Operator EOG RESOURCES INCORPORATED Contact: KAY MADDOX
E-Mail: KAY_MADDOX@EOGRESOURCES.COM8. Lease Name and Well No.
FOX 30 FED COM 701H

3. Address MIDLAND, TX 79702

3a. Phone No. (include area code)
Ph: 432-686-36589. API Well No.
30-025-43867-00-S14. Location of Well (Report location clearly and in accordance with Federal requirements)*
Sec 30 T25S R34E Mer NMP
At surface NWSE 2192FSL 1998FEL 32.100262 N Lat, 103.506935 W Lon
Sec 30 T25S R34E Mer NMP
At top prod interval reported below NWSE 2239FSL 2298FEL 32.100391 N Lat, 103.507903 W Lon
Sec 31 T25S R34E Mer NMP
At total depth SWSE 231FSL 2299FEL 32.080360 N Lat, 103.503584 W Lon10. Field and Pool, or Exploratory
BOBCAT DRAW-UPR WOLFCAMP11. Sec., T., R., M., or Block and Survey
or Area Sec 30 T25S R34E Mer NMP12. County or Parish
LEA13. State
NM14. Date Spudded
03/10/201815. Date T.D. Reached
04/29/201816. Date Completed
☐ D & A ☒ Ready to Prod.
07/25/201817. Elevations (DF, KB, RT, GL)*
3323 GL18. Total Depth: MD
TVD 20110
1265619. Plug Back T.D.: MD
TVD 20000
1265620. Depth Bridge Plug Set: MD
TVD21. Type Electric & Other Mechanical Logs Run (Submit copy of each)
NONE22. Was well cored? ☒ No ☐ Yes (Submit analysis)
Was DST run? ☒ No ☐ Yes (Submit analysis)
Directional Survey? ☐ No ☒ Yes (Submit analysis)

23. Casing and Liner Record (Report all strings set in well)

| Hole Size | Size/Grade | Wt. (#/ft.) | Top (MD) | Bottom (MD) | Stage Cementer Depth | No. of Sk. & Type of Cement | Slurry Vol. (BBL) | Cement Top* | Amount Pulled |
|-----------|---------------|-------------|----------|-------------|----------------------|-----------------------------|-------------------|-------------|---------------|
| 17.500 | 13.375 J-55 | 54.5 | 0 | 1141 | | 910 | | 0 | |
| 12.250 | 9.625 J-55 | 40.0 | 0 | 5177 | | 1315 | | 0 | |
| 8.750 | 7.625 HCP-110 | 29.7 | 0 | 11914 | | 459 | | 4079 | |
| 6.750 | 5.500 ECP-110 | 23.0 | 0 | 19930 | | 795 | | 7250 | |
| | | | | | | | | | |
| | | | | | | | | | |

24. Tubing Record

| Size | Depth Set (MD) | Packer Depth (MD) | Size | Depth Set (MD) | Packer Depth (MD) | Size | Depth Set (MD) | Packer Depth (MD) |
|------|----------------|-------------------|------|----------------|-------------------|------|----------------|-------------------|
| | | | | | | | | |

25. Producing Intervals

| Formation | Top | Bottom | Perforated Interval | Size | No. Holes | Perf. Status |
|-------------|-------|--------|---------------------|-------|-----------|-----------------|
| A) WOLFCAMP | 12815 | 20000 | 12815 TO 20000 | 3.000 | 1568 | OPEN - Wolfcamp |
| B) | | | | | | |
| C) | | | | | | |
| D) | | | | | | |

26. Perforation Record

27. Acid, Fracture, Treatment, Cement Squeeze, Etc.

| Depth Interval | Amount and Type of Material |
|----------------|--|
| 12815 TO 20000 | FRAC W/18,156,654 LBS PROPPANT;222,662 BBLS LOAD FLUID |
| | |
| | |
| | |

28. Production - Interval A

| Date First Produced | Test Date | Hours Tested | Test Production | Oil BBL | Gas MCF | Water BBL | Oil Gravity Corr. API | Gas Gravity | Production Method |
|---------------------|-------------------|--------------|-----------------|---------|---------|-----------|-----------------------|-------------|-------------------|
| 07/25/2018 | 08/01/2018 | 24 | → | 2163.0 | 4060.0 | 7377.0 | 40.0 | | FLOW FROM WELL |
| Choke Size | Tbg. Press. Flwg. | Csg. Press. | 24 Hr. Rate | Oil BBL | Gas MCF | Water BBL | Gas:Oil Ratio | Well Status | |
| 64 | SI | 1548.0 | → | 2163 | 4060 | 7377 | 1877 | POW | |

28a. Production - Interval B

| Date First Produced | Test Date | Hours Tested | Test Production | Oil BBL | Gas MCF | Water BBL | Oil Gravity Corr. API | Gas Gravity | Production Method |
|---------------------|-------------------|--------------|-----------------|---------|---------|-----------|-----------------------|-------------|-------------------|
| | | | → | | | | | | |
| Choke Size | Tbg. Press. Flwg. | Csg. Press. | 24 Hr. Rate | Oil BBL | Gas MCF | Water BBL | Gas:Oil Ratio | Well Status | |
| | SI | | → | | | | | | |

ACCEPTED FOR RECORD

OCT 22 2018
BUREAU OF LAND MANAGEMENT
CARLSBAD FIELD OFFICE

(See Instructions and spaces for additional data on reverse side)

ELECTRONIC SUBMISSION #430299 VERIFIED BY THE BLM WELL INFORMATION SYSTEM

** BLM REVISED ** BLM REVISED ** BLM REVISED ** BLM REVISED **

Reclamation Due: 1/25/2019

28b. Production - Interval C

| Date First Produced | Test Date | Hours Tested | Test Production → | Oil BBL | Gas MCF | Water BBL | Oil Gravity Corr. API | Gas Gravity | Production Method |
|---------------------|----------------------------|--------------|----------------------|---------|---------|-----------|--------------------------|-------------|-------------------|
| Choke Size | Tbg. Press. Flwg. SI | Csg. Press. | 24 Hr. Rate → | Oil BBL | Gas MCF | Water BBL | Gas:Oil Ratio | Well Status | |

28c. Production - Interval D

| Date First Produced | Test Date | Hours Tested | Test Production → | Oil BBL | Gas MCF | Water BBL | Oil Gravity Corr. API | Gas Gravity | Production Method |
|---------------------|----------------------------|--------------|----------------------|---------|---------|-----------|--------------------------|-------------|-------------------|
| Choke Size | Tbg. Press. Flwg. SI | Csg. Press. | 24 Hr. Rate → | Oil BBL | Gas MCF | Water BBL | Gas:Oil Ratio | Well Status | |

29. Disposition of Gas(Sold, used for fuel, vented, etc.)
SOLD

30. Summary of Porous Zones (Include Aquifers):

Show all important zones of porosity and contents thereof: Cored intervals and all drill-stem tests, including depth interval tested, cushion used, time tool open, flowing and shut-in pressures and recoveries.

31. Formation (Log) Markers

| Formation | Top | Bottom | Descriptions, Contents, etc. | Name | Top |
|-----------------|-------|--------|------------------------------|-----------------|-------------|
| | | | | | Meas. Depth |
| RUSTLER | 940 | | BARREN | RUSTLER | 940 |
| TOP OF SALT | 1240 | | BARREN | TOP OF SALT | 1240 |
| BASE OF SALT | 4950 | | BARREN | BASE OF SALT | 4950 |
| BRUSHY CANYON | 7830 | | OIL & GAS | BRUSHY CANYON | 7830 |
| BONE SPRING 1ST | 10315 | | OIL & GAS | BONE SPRING 1ST | 10315 |
| BONE SPRING 2ND | 10835 | | OIL & GAS | BONE SPRING 2ND | 10835 |
| BONE SPRING 3RD | 11895 | | OI & GAS | BONE SPRING 3RD | 11895 |
| WOLFCAMP | 12365 | | OIL & GAS | WOLFCAMP | 12365 |

32. Additional remarks (include plugging procedure):

PLEASE REFERENCE ATTACHMENTS

PLEASE NOTE POOL CHANGE - BOBCAT DRAW; UPPER WOLFCAMP

RAN CEMENT BOND LOG - TOC OF CEMENT FOR 5 1/2" CSG WAS @ 7250', DETERMINED BY CBL

33. Circle enclosed attachments:

- | | | | |
|---|--------------------|---------------|-----------------------|
| 1. Electrical/Mechanical Logs (1 full set req'd.) | 2. Geologic Report | 3. DST Report | 4. Directional Survey |
| 5. Sundry Notice for plugging and cement verification | 6. Core Analysis | 7. Other: | |

34. I hereby certify that the foregoing and attached information is complete and correct as determined from all available records (see attached instructions):

Electronic Submission #430299 Verified by the BLM Well Information System.
For EOG RESOURCES INCORPORATED, sent to the Hobbs
Committed to AFMSS for processing by DUNCAN WHITLOCK on 09/05/2018 (18DW0237SE)

Name (please print) KAY MADDOX

Title REGULATORY SPECIALIST

Signature _____ (Electronic Submission)

Date 08/08/2018

Title 18 U.S.C. Section 1001 and Title 43 U.S.C. Section 1212, make it a crime for any person knowingly and willfully to make to any department or agency of the United States any false, fictitious or fraudulent statements or representations as to any matter within its jurisdiction.

**** REVISED ** REVISED ** REVISED ** REVISED ** REVISED ** REVISED ** REVISED ****

District I
1625 N. French Dr., Hobbs, NM 88240
Phone: (575) 393-6161 Fax: (575) 393-0720
District II
811 S. First St., Artesia, NM 88210
Phone (575) 748-1283 Fax: (575) 748-9720
District III
1000 Rio Brazos Road, Aztec, NM 87410
Phone: (505) 334-6178 Fax: (505) 334-6170
District IV
1220 S. St. Francis Dr., Santa Fe, NM 87505
Phone: (505) 476-3469 Fax: (505) 476-3462

State of New Mexico
Energy, Minerals & Natural Resources
Department
OIL CONSERVATION DIVISION
1220 South St. Francis Dr.
Santa Fe, NM 87505

FORM C-102
Revised August 1, 2011
Submit one copy to appropriate
District Office

☐ AMENDED REPORT

WELL LOCATION AND ACREAGE DEDICATION PLAT

| | | |
|--|---|--|
| ¹ API Number 30-025- 43867 | ² Pool Code 98094 | ³ Pool Name BOB CAT DRAW; UPPER WOLFCAMP |
| ⁴ Property Code 318097 | ⁵ Property Name FOX 30 FED COM | ⁶ Well Number #701H |
| ⁷ GRID No. 7377 | ⁸ Operator Name EOG RESOURCES, INC. | ⁹ Elevation 3323' |

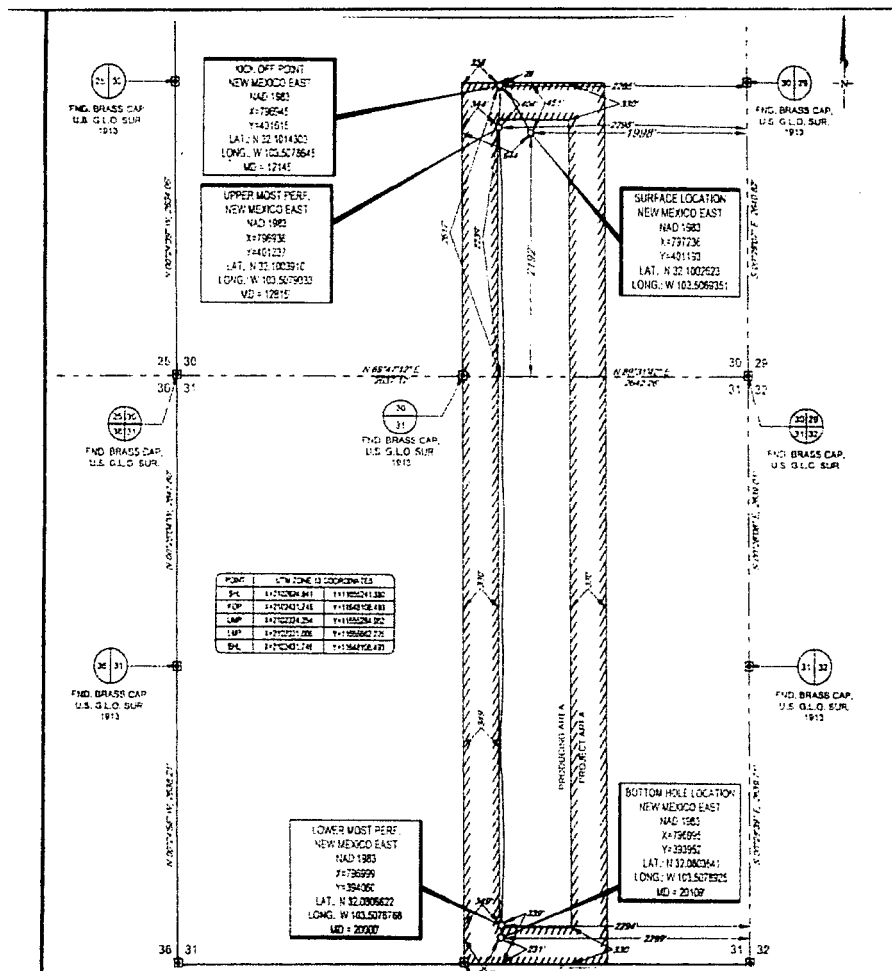
¹⁰Surface Location

| UL or lot no. | Section | Township | Range | Lot Idn | Feet from the | North/South line | Feet from the | East/West line | County |
|---------------|---------|----------|-------|---------|---------------|------------------|---------------|----------------|--------|
| J | 30 | 25-S | 34-E | - | 2192' | SOUTH | 1998' | EAST | LEA |

| UL or lot no. | Section | Township | Range | Lot Idn | Feet from the | North/South line | Feet from the | East/West line | County |
|---------------|---------|----------|-------|---------|---------------|------------------|---------------|----------------|--------|
| 0 | 31 | 25-S | 34-E | - | 231' | SOUTH | 2299' | EAST | LEA |

| | | | |
|---|-------------------------------|----------------------------------|-------------------------|
| ¹¹ Dedicated Acres 240.00 | ¹² Joint or Infill | ¹³ Consolidation Code | ¹⁴ Order No. |
|---|-------------------------------|----------------------------------|-------------------------|

No allowable will be assigned to this completion until all interests have been consolidated or a non-standard unit has been approved by the division.



¹⁷OPERATOR CERTIFICATION

I hereby certify that the information contained herein is true and complete to the best of my knowledge and belief, and that this organization either owns a working interest or undivided mineral interest in the land including the proposed bottom hole location or has a right to drill this well at this location pursuant to a contract with an owner of such a mineral or working interest, or to a voluntary pooling agreement or a compulsory pooling order heretofore entered by the division.

Kay Maddox 8/6/2018
Signature Date

KAY MADDOX
Printed Name

E-mail Address

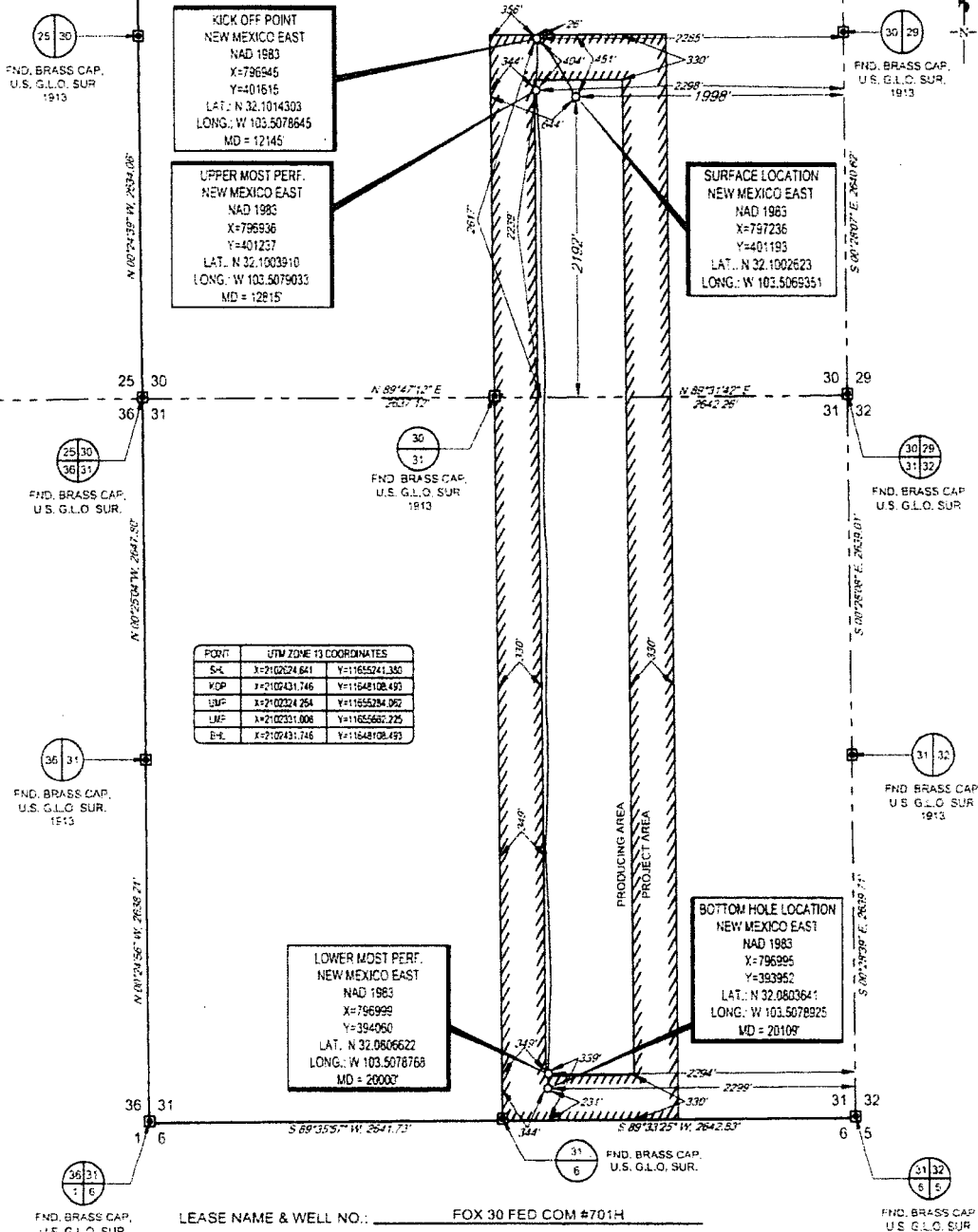
¹⁸SURVEYOR CERTIFICATION

I hereby certify that the well location shown on this plat was plotted from field notes of actual surveys made by me or under my supervision, and that the same is true to the best of my belief.

12/14/2016
Date of Survey
Signature of Professional Surveyor
MICHAEL BROWN
NEW MEXICO
18329
PROFESSIONAL SURVEYOR
Certificate Number

SCALE 1" = 1000'
0' 500' 1000'

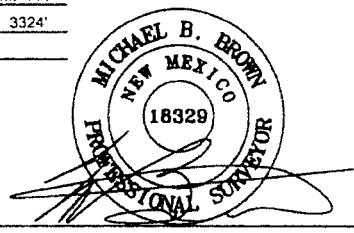
SECTIONS 30 & 31, TOWNSHIP 25-S, RANGE 34-E, N.M.P.M.
LEA COUNTY, NEW MEXICO



LEASE NAME & WELL NO.: FOX 30 FED COM #701H
SECTION 30 TWP 25-S RGE 34-E SURVEY N.M.P.M.
COUNTY LEA STATE NM ELEVATION 3324'
DESCRIPTION 2192' FSL & 1998' FEL



1400 EVERMAN PARKWAY, SW, 146 FT. WORTH, TEXAS 76140
TELEPHONE (817) 244-7512 FAX (817) 244-7554
2903 NORTH BIG SPRING - MIDLAND, TEXAS 79708
TEL/FPHONE (432) 682-1653 OP (800) 767-1653 FAX (432) 682-1743
WWW.TOPOGRAPHIC.COM



Michael Blake Brown, P.S. No. 18329
JULY 23, 2018



| FOX 30 FED COM #701H AS-DRILLED | REVISION: | |
|------------------------------------|-----------|------|
| | INT | DATE |
| DATE: 07/23/2018 | | |
| FILE:AD_FOX_30_FED_COM_701H | | |
| DRAWN BY: IMU | | |
| SHEET: 1 OF 1 | | |

NOTES
1. ORIGINAL DOCUMENT SIZE 8 1/2" X 14"
2. ALL BEARINGS, DISTANCES AND COORDINATE VALUES CONTAINED HEREIN ARE GIVEN BASED UPON THE NEW MEXICO COORDINATE SYSTEM OF 1983, EAST ZONE, U.S. SURVEY FEET.
3. THIS WELL LOCATION SHOWN HEREON HAS BEEN SURVEYED ON THE GROUND UNDER MY SUPERVISION AND PREPARED ACCORDING TO THE EVIDENCE FOUND AT THE TIME OF SURVEY, AND DATA PROVIDED BY EOG RESOURCES, INC. THIS CERTIFICATION IS MADE AND LIMITED TO THOSE PERSONS OR ENTITIES SHOWN ON THE FACE OF THIS PLAT AND IS NON-TRANSFERABLE. THIS SURVEY IS CERTIFIED FOR THIS TRANSACTION ONLY.