

UNITED STATES  
DEPARTMENT OF THE INTERIOR  
BUREAU OF LAND MANAGEMENT

OCD Hobbs

FORM APPROVED  
OMB No. 1004-0137  
Expires: July 31, 2010

## WELL COMPLETION OR RECOMPLETION REPORT AND LOG

5. Lease Serial No.  
NMNM1122791a. Type of Well ☒ Oil Well ☐ Gas Well ☐ Dry ☐ Other  
b. Type of Completion ☒ New Well ☐ Work Over ☐ Deepen ☐ Plug Back ☐ Diff. Resvr.  
Other \_\_\_\_\_

6. If Indian, Allottee or Tribe Name

7. Unit or CA Agreement Name and No.

2. Name of Operator  
EOG RESOURCES INCORPORATED Contact: KAY MADDOX  
E-Mail: KAY\_MADDOX@EOGRESOURCES.COM8. Lease Name and Well No.  
FOX 30 FED COM 602H3. Address  
MIDLAND, TX 797023a. Phone No. (include area code)  
Ph: 432-686-36589. API Well No.  
30-025-43868-00-S14. Location of Well (Report location clearly and in accordance with Federal requirements)\*  
Sec 30 T25S R34E Mer NMP  
At surface NWSE 2192FSL 1963FEL 32.100260 N Lat, 103.506823 W Lon  
Sec 30 T25S R34E Mer NMP  
At top prod interval reported below NWSE 2274FSL 1997FEL 32.100487 N Lat, 103.506933 W Lon  
Sec 31 T25S R34E Mer NMP  
At total depth SWSE 231FSL 1973FEL 32.080364 N Lat, 103.506840 W Lon10. Field and Pool, or Exploratory  
RED HILLS-BONE SPRINGS11. Sec., T., R., M., or Block and Survey  
or Area Sec 30 T25S R34E Mer NMP12. County or Parish  
LEA13. State  
NM14. Date Spudded  
03/16/201815. Date T.D. Reached  
05/19/201816. Date Completed  
☐ D & A ☒ Ready to Prod.  
07/25/201817. Elevations (DF, KB, RT, GL)\*  
3324 GL18. Total Depth: MD  
TVD 19897  
1242219. Plug Back T.D.: MD  
TVD 19787  
1242220. Depth Bridge Plug Set: MD  
TVD21. Type Electric & Other Mechanical Logs Run (Submit copy of each)  
NONE22. Was well cored? ☒ No ☐ Yes (Submit analysis)  
Was DST run? ☒ No ☐ Yes (Submit analysis)  
Directional Survey? ☐ No ☒ Yes (Submit analysis)

## 23. Casing and Liner Record (Report all strings set in well)

Hole Size	Size/Grade	Wt. (#/ft.)	Top (MD)	Bottom (MD)	Stage Cementer Depth	No. of Sk. & Type of Cement	Slurry Vol. (BBL)	Cement Top*	Amount Pulled
17.500	13.375 J-55	54.5	0	1098		910		0	
12.250	9.625 J-55	40.0	0	5146		1315		1050	
8.750	7.625 HCP-110	29.7	0	11767		350		2766	
6.750	5.500 ECP-110	20.0	0	19878		775		8200	

## 24. Tubing Record

Size	Depth Set (MD)	Packer Depth (MD)	Size	Depth Set (MD)	Packer Depth (MD)	Size	Depth Set (MD)	Packer Depth (MD)

## 25. Producing Intervals

## 26. Perforation Record

Formation	Top	Bottom	Perforated Interval	Size	No. Holes	Perf. Status
A) BONE SPRING	12560	19787	12560 TO 19787	3.000	1552	OPEN - Lwr Bone Spring
B)						
C)						
D)						

## 27. Acid, Fracture, Treatment, Cement Squeeze, Etc.

Depth Interval	Amount and Type of Material
12560 TO 19787	FRAC W/18,195,279 LBS PROPPANT;231,360 BBLs LOAD FLUID

## 28. Production - Interval A

Date First Produced	Test Date	Hours Tested	Test Production	Oil BBL	Gas MCF	Water BBL	Oil Gravity Corr. API	Gas Gravity	Production Method
07/25/2018	08/05/2018	24	→	1528.0	3052.0	9833.0	40.0		FLOW FROM WELL
Choke Size	Tbg. Press. Flwg. SI	Csg. Press. SI	24 Hr. Rate	Oil BBL	Gas MCF	Water BBL	Gas:Oil Ratio	Well Status	
64	SI	596.0	→	1528	3052	9833	1997	POW	

## 28a. Production - Interval B

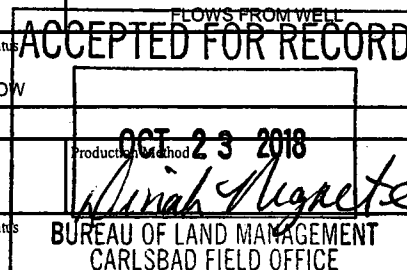
Date First Produced	Test Date	Hours Tested	Test Production	Oil BBL	Gas MCF	Water BBL	Oil Gravity Corr. API	Gas Gravity	Production Method
			→						
Choke Size	Tbg. Press. Flwg. SI	Csg. Press. SI	24 Hr. Rate	Oil BBL	Gas MCF	Water BBL	Gas:Oil Ratio	Well Status	
	SI		→						

(See Instructions and spaces for additional data on reverse side)

ELECTRONIC SUBMISSION #430314 VERIFIED BY THE BLM WELL INFORMATION SYSTEM

\*\* BLM REVISED \*\* BLM REVISED \*\* BLM REVISED \*\* BLM REVISED \*\* BLM REVISED \*\*

Reclamation Due: 1/25/2019



## 28b. Production - Interval C

Date First Produced	Test Date	Hours Tested	Test Production	Oil BBL	Gas MCF	Water BBL	Oil Gravity Corr. API	Gas Gravity	Production Method
Choke Size	Tbg. Press. Flwg. SI	Csg. Press.	24 Hr. Rate	Oil BBL	Gas MCF	Water BBL	Gas:Oil Ratio	Well Status	

## 28c. Production - Interval D

Date First Produced	Test Date	Hours Tested	Test Production	Oil BBL	Gas MCF	Water BBL	Oil Gravity Corr. API	Gas Gravity	Production Method
Choke Size	Tbg. Press. Flwg. SI	Csg. Press.	24 Hr. Rate	Oil BBL	Gas MCF	Water BBL	Gas:Oil Ratio	Well Status	

29. Disposition of Gas(Sold, used for fuel, vented, etc.)  
SOLD

## 30. Summary of Porous Zones (Include Aquifers):

Show all important zones of porosity and contents thereof: Cored intervals and all drill-stem tests, including depth interval tested, cushion used, time tool open, flowing and shut-in pressures and recoveries.

## 31. Formation (Log) Markers

Formation	Top	Bottom	Descriptions, Contents, etc.	Name	Top Meas. Depth
RUSTLER	940		BARREN	RUSTLER	940
TOP OF SALT	1240		BARREN	TOP OF SALT	1240
BASE OF SALT	4950		BARREN	BASE OF SALT	4950
BRUSHY CANYON	7830		OIL & GAS	BRUSHY CANYON	7830
BONE SPRING 1ST	10315		OIL & GAS	BONE SPRING 1ST	10315
BONE SPRING 2ND	10835		OIL & GAS	BONE SPRING 2ND	10835
BONE SPRING 3RD	11895		OIL & GAS	BONE SPRING 3RD	11895
WOLFCAMP	12365		OIL & GAS	WOLFCAMP	12365

32. Additional remarks (include plugging procedure):  
PLEASE REFERENCE ATTACHMENTS

DID NOT CIRCULATE CEMENT IN 9 5/8" - TESTED ANNULUS TO 1500 PSI FOR 30 MIN, NO FURTHER REMEDIATION REQUIRED PER BLM, RAN CBL TOP OF CEMENT 1050'

RAN CEMENT BOND LOG AT END OF WELL - TOC @ 8200'

## 33. Circle enclosed attachments:

- |   |                    |               |                       |
|---|--------------------|---------------|-----------------------|
| 1. Electrical/Mechanical Logs (1 full set req'd.)     | 2. Geologic Report | 3. DST Report | 4. Directional Survey |
| 5. Sundry Notice for plugging and cement verification | 6. Core Analysis   | 7. Other:     |                       |

## 34. I hereby certify that the foregoing and attached information is complete and correct as determined from all available records (see attached instructions):

Electronic Submission #430314 Verified by the BLM Well Information System.  
For EOG RESOURCES INCORPORATED, sent to the Hobbs  
Committed to AFMSS for processing by DUNCAN WHITLOCK on 09/06/2018 (18DW0239SE)

Name (please print) KAY MADDOX

Title REGULATORY SPECIALIST

Signature \_\_\_\_\_ (Electronic Submission)

Date 08/08/2018

Title 18 U.S.C. Section 1001 and Title 43 U.S.C. Section 1212, make it a crime for any person knowingly and willfully to make to any department or agency of the United States any false, fictitious or fraudulent statements or representations as to any matter within its jurisdiction.

**\*\* REVISED \*\* REVISED \*\* REVISED \*\* REVISED \*\* REVISED \*\* REVISED \*\* REVISED \*\* REVISED \*\***

District I  
1625 N. French Dr., Hobbs, NM 88240  
Phone: (505) 393-6161 Fax: (505) 393-0720  
District II  
811 S. First St., Artesia, NM 88210  
Phone: (505) 748-1283 Fax: (505) 748-9720  
District III  
1000 Rio Brazos Road, Aztec, NM 87410  
Phone: (505) 334-6178 Fax: (505) 334-6170  
District IV  
1220 S. St. Francis Dr., Santa Fe, NM 87505  
Phone: (505) 476-3460 Fax: (505) 476-3462

State of New Mexico  
Energy, Minerals & Natural Resources  
Department  
OIL CONSERVATION DIVISION  
1220 South St. Francis Dr.  
Santa Fe, NM 87505

FORM C-102  
Revised August 1, 2011  
Submit one copy to appropriate  
District Office

☐ AMENDED REPORT

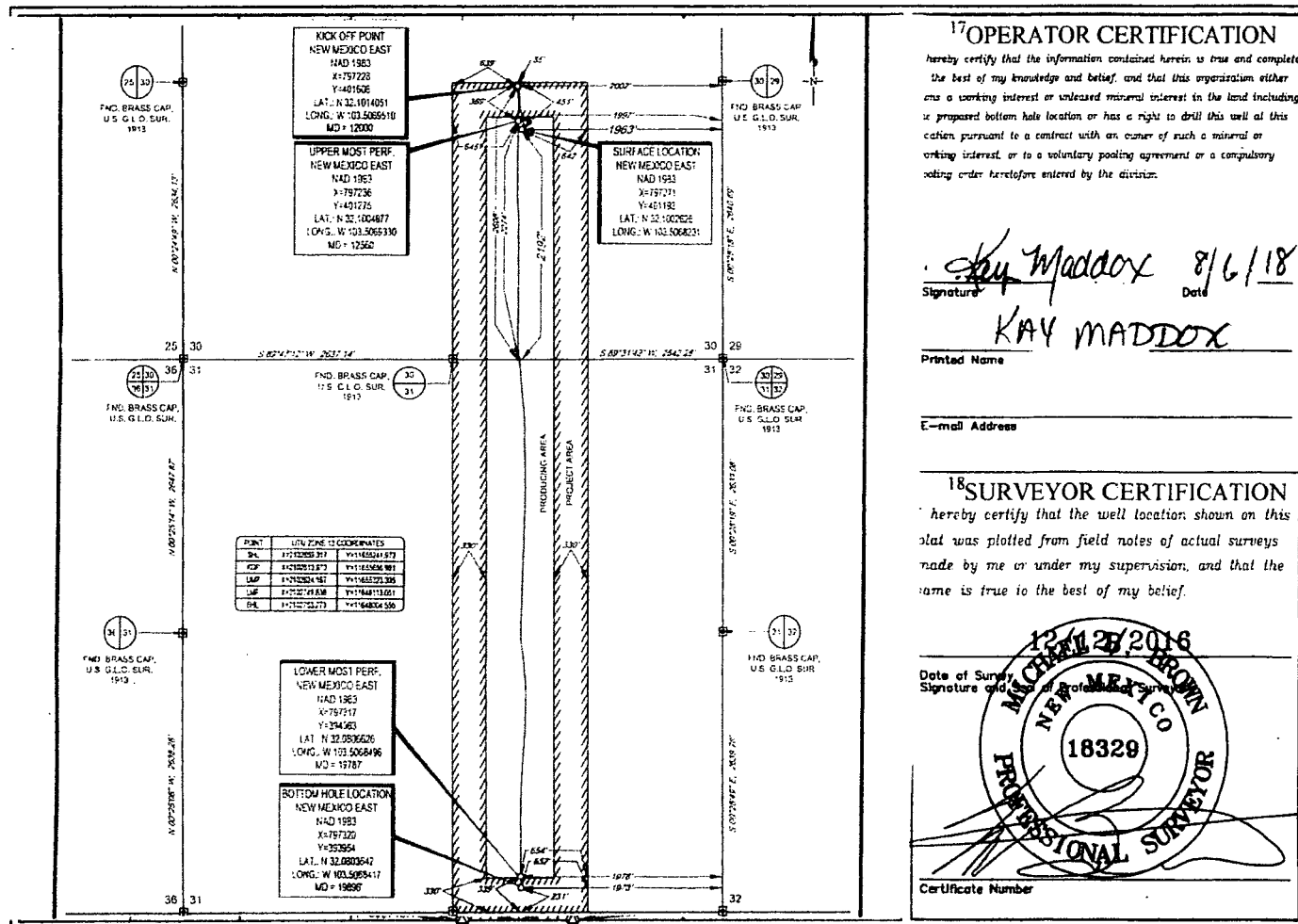
WELL LOCATION AND ACREAGE DEDICATION PLAT

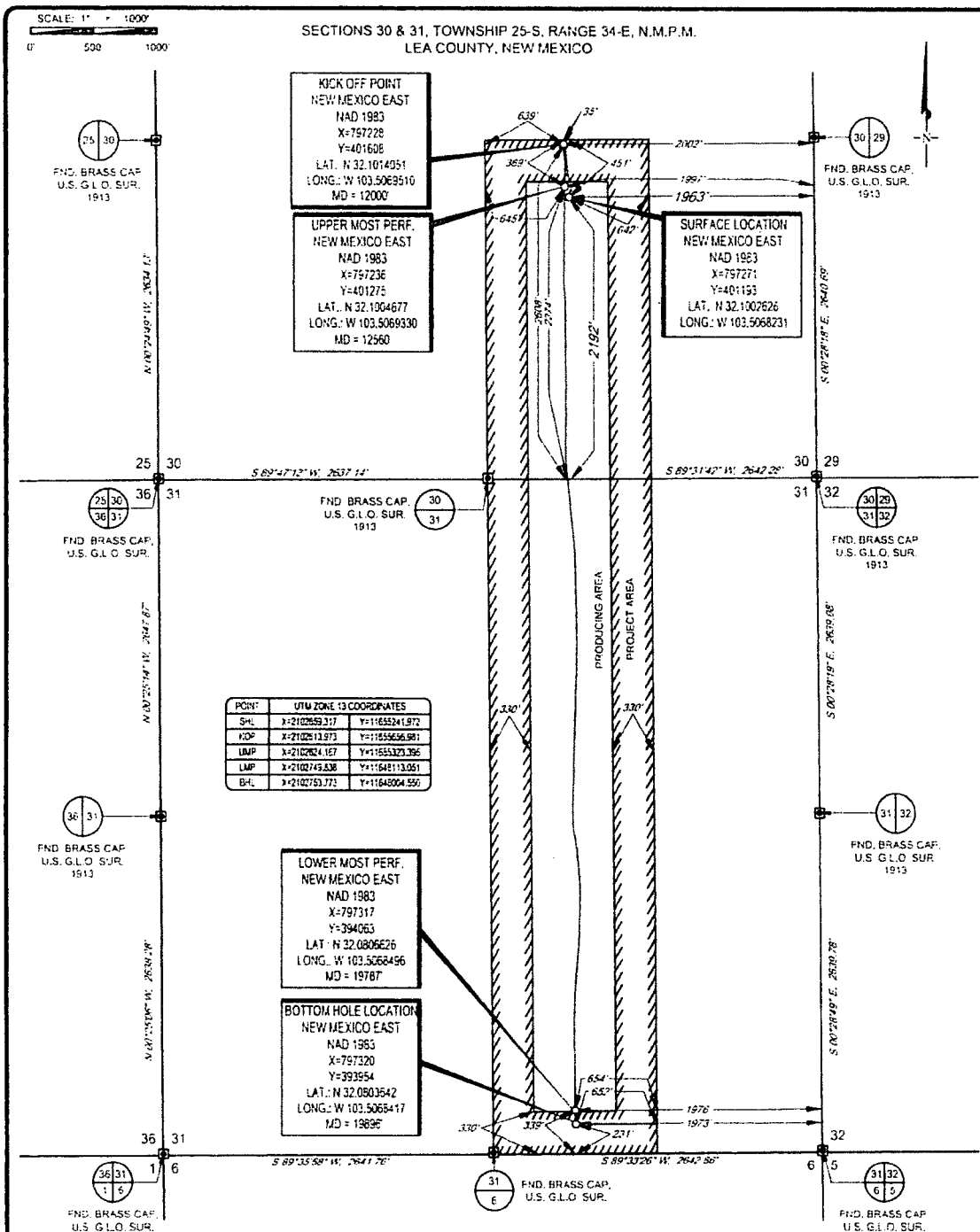
<sup>1</sup> API Number 30-025-43868	<sup>2</sup> Pool Code 51020	<sup>3</sup> Pool Name Red Hills; Lower Bone Spring
<sup>4</sup> Property Code 39982	<sup>5</sup> Property Name FOX 30 FED COM	
<sup>7</sup> OGRID No. 7377	<sup>8</sup> Operator Name EOG RESOURCES, INC.	<sup>6</sup> Well Number #602H <sup>9</sup> Elevation 3324'

<sup>10</sup> Surface Location									
UL or lot no.	Section	Township	Range	Lot Idn	Feet from the	North/South line	Feet from the	East/West line	County
J	30	25-S	34-E	-	2192'	SOUTH	1963'	EAST	LEA

UL or lot no.	Section	Township	Range	Lot Idn	Feet from the	North/South line	Feet from the	East/West line	County
0	31	25-S	34-E	-	231'	SOUTH	1973'	EAST	LEA
<sup>12</sup> Dedicated Acres 240.00		<sup>13</sup> Joint or Infill		<sup>14</sup> Consolidation Code		<sup>15</sup> Order No.			

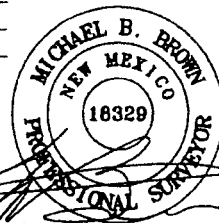
No allowable will be assigned to this completion until all interests have been consolidated or a non-standard unit has been approved by the division.





POINT	UTM ZONE 13 COORDINATES
SHL	X=210255.317 Y=1155524.1972
KOP	X=210251.371 Y=1155506.981
UMP	X=210264.157 Y=11555329.395
LMP	X=2102743.838 Y=115642113.051
BHL	X=2102753.773 Y=115648004.550

LEASE NAME & WELL NO : FOX 30 FED COM #602H  
 SECTION 30 TWP 25-S RGE 34-E SURVEY N.M.P.M.  
 COUNTY LEA STATE NM ELEVATION 3324'  
 DESCRIPTION 2192' FSL & 1963' FEL



**TOPOGRAPHIC**  
 LOYALTY INNOVATION LEGACY  
 1400 FUTURE PARKWAY, Ste. 140 - FT. WORTH, TEXAS 76140  
 TELEPHONE (817) 744-7512 • FAX (817) 744-7554  
 TEXAS FIRM REGISTRATION NO. 0042504  
 WWW.TOPOGGRAPHIC.COM

Michael Blake Brown, P.S. No. 18329  
 JULY 17, 2018

**eg resources, inc.**

FOX 30 FED COM #602H AS-COMPLETED	REVISION		NOTES
	INT	DATE	
DATE: 07/17/18			1. ORIGINAL DOCUMENT SIZE 8.5" X 14"
FILE: AD_Fox_30_FED_COM_502H			2. ALL BEARINGS, DISTANCES, AND COORDINATE VALUES CONTAINED HEREIN ARE GRID BASED UPON THE NEW MEXICO COORDINATE SYSTEM: EAST ZONE, U.S. SURVEY FEET, NORTH AMERICAN DATUM 1983.
DRAWN BY: MML			3. THIS WELL LOCATION SHOWN HEREON HAS BEEN SURVEYED ON THE GROUND UNDER MY SUPERVISION AND PREPARED ACCORDING TO THE EVIDENCE FOUND AT THE TIME OF SURVEY, AND DATA PROVIDED BY EOG RESOURCES, INC. THIS CERTIFICATION IS MADE AND LIMITED TO THOSE PERSONS OR ENTITIES SHOWN ON THE FACE OF THIS PLAN AND IS NON-TRANSFERABLE. THIS SURVEY IS CERTIFIED FOR THIS TRANSACTION ONLY.
SHEET: 1 OF 1			