

UNITED STATES  
DEPARTMENT OF THE INTERIOR  
BUREAU OF LAND MANAGEMENT

FORM APPROVED  
OMB No. 1004-0137  
Expires: July 31, 2010

WELL COMPLETION OR RECOMPLETION REPORT AND LOGS

5. Lease Serial No.  
NMNM108503

6. If Indian, Allottee or Tribe Name

7. Unit or CA Agreement Name and No.

8. Lease Name and Well No.  
CABALLO 23 FED 703H

9. API Well No.  
30-025-43877-00-S1

10. Field and Pool, or Exploratory  
BOBCAT DRAW-UPR WOLFCAMP

11. Sec., T., R., M., or Block and Survey  
or Area Sec 23 T25S R33E Mer NMP

12. County or Parish  
LEA

13. State  
NM

17. Elevations (DF, KB, RT, GL)\*  
3342 GL

1a. Type of Well ☒ Oil Well ☐ Gas Well ☐ Dry ☐ Other  
b. Type of Completion ☒ New Well ☐ Work Over ☐ Deepen ☐ Plug Back ☐ Other

2. Name of Operator  
EOG RESOURCES INC  
Contact: KAY MADDOX  
E-Mail: KAY\_MADDOX@EOGRESOURCES.COM

3. Address 1111 BAGBY SKY LOBBY2  
HOUSTON, TX 77002  
3a. Phone No. (include area code)  
Ph: 432-686-3658

4. Location of Well (Report location clearly and in accordance with Federal requirements)\*  
Sec 23 T25S R33E Mer NMP  
At surface SESW 300FSL 1755FWL 32.109600 N Lat, 103.545990 W Lon  
Sec 23 T25S R33E Mer NMP  
At top prod interval reported below SESE 409FSL 1209FWL 32.109899 N Lat, 103.547753 W Lon  
Sec 14 T25S R33E Mer NMP  
At total depth NWSW 2390FSL 1207FWL 32.129860 N Lat, 103.547756 W Lon

14. Date Spudded  
04/07/2018  
15. Date T.D. Reached  
06/27/2018  
16. Date Completed  
☐ D & A ☒ Ready to Prod.  
08/14/2018

18. Total Depth: MD 19939 TVD 12422  
19. Plug Back T.D.: MD 19841 TVD 12422  
20. Depth Bridge Plug Set: MD TVD

21. Type Electric & Other Mechanical Logs Run (Submit copy of each)  
NONE  
22. Was well cored? ☒ No ☐ Yes (Submit analysis)  
Was DST run? ☒ No ☐ Yes (Submit analysis)  
Directional Survey? ☐ No ☒ Yes (Submit analysis)

23. Casing and Liner Record (Report all strings set in well)

Hole Size	Size/Grade	Wt. (#/ft.)	Top (MD)	Bottom (MD)	Stage Cementer Depth	No. of Sk. & Type of Cement	Slurry Vol. (BBL)	Cement Top*	Amount Pulled
17.500	13.375 J-55	54.5	0	1150		985		0	
12.250	9.625 J-55	40.0	0	4961		1685		0	
8.750	7.625 HCP-110	29.7	0	11783		470		1654	
6.750	5.500 ECP-110	20.0	0	19929		785		5710	

24. Tubing Record

Size	Depth Set (MD)	Packer Depth (MD)	Size	Depth Set (MD)	Packer Depth (MD)	Size	Depth Set (MD)	Packer Depth (MD)

25. Producing Intervals

26. Perforation Record

Formation	Top	Bottom	Perforated Interval	Size	No. Holes	Perf. Status
A) WOLFCAMP	12668	19841	12668 TO 19841	3.000	1568	OPEN PRODUCING
B)						
C)						
D)						

27. Acid, Fracture, Treatment, Cement Squeeze, Etc.

Depth Interval	Amount and Type of Material
12668 TO 19841	FRAC W/18,287,650 LBS PROPPANT;252,499 BBLs LOAD FLUID

28. Production - Interval A

Date First Produced	Test Date	Hours Tested	Test Production	Oil BBL	Gas MCF	Water BBL	Oil Gravity Corr. API	Gas Gravity	Production Method
08/14/2018	08/18/2018	24	→	4573.0	7824.0	10361.0	40.0		FLows FROM WELL
Choke Size	Tbg. Press. Flwg. SI	Csg. Press.	24 Hr. Rate	Oil BBL	Gas MCF	Water BBL	Gas:Oil Ratio	Well Status	
91	SI	1482.0	→	4573	7824	10361	1711	POW	

28a. Production - Interval B

Date First Produced	Test Date	Hours Tested	Test Production	Oil BBL	Gas MCF	Water BBL	Oil Gravity Corr. API	Gas Gravity	Production Method
			→						
Choke Size	Tbg. Press. Flwg. SI	Csg. Press.	24 Hr. Rate	Oil BBL	Gas MCF	Water BBL	Gas:Oil Ratio	Well Status	
	SI		→						

(See Instructions and spaces for additional data on reverse side)

ELECTRONIC SUBMISSION #432881 VERIFIED BY THE BLM WELL INFORMATION SYSTEM

\*\* BLM REVISED \*\* BLM REVISED \*\* BLM REVISED \*\* BLM REVISED \*\* BLM REVISED \*\*

Reclamation Due: 2/14/2019

ACD Hobbs  
HOBBS OCD

UCT 24 2018  
RECEIVED

ACCEPTED FOR RECORD  
OCT 17 2018  
BUREAU OF LAND MANAGEMENT  
CARLSBAD FIELD OFFICE

## 28b. Production - Interval C

Date First Produced	Test Date	Hours Tested	Test Production →	Oil BBL	Gas MCF	Water BBL	Oil Gravity Corr. API	Gas Gravity	Production Method
Choke Size	Tbg. Press. Flwg. SI	Csg. Press.	24 Hr. Rate →	Oil BBL	Gas MCF	Water BBL	Gas:Oil Ratio	Well Status	

## 28c. Production - Interval D

Date First Produced	Test Date	Hours Tested	Test Production →	Oil BBL	Gas MCF	Water BBL	Oil Gravity Corr. API	Gas Gravity	Production Method
Choke Size	Tbg. Press. Flwg. SI	Csg. Press.	24 Hr. Rate →	Oil BBL	Gas MCF	Water BBL	Gas:Oil Ratio	Well Status	

29. Disposition of Gas(Sold, used for fuel, vented, etc.)  
SOLD

## 30. Summary of Porous Zones (Include Aquifers):

Show all important zones of porosity and contents thereof: Cored intervals and all drill-stem tests, including depth interval tested, cushion used, time tool open, flowing and shut-in pressures and recoveries.

## 31. Formation (Log) Markers

Formation	Top	Bottom	Descriptions, Contents, etc.	Name	Top
					Meas. Depth
RUSTLER	1125		BARREN	RUSTLER	1125
TOP OF SALT	1630		BARREN	TOP OF SALT	1630
BASE OF SALT	4800		BARREN	BASE OF SALT	4800
BRUSHY CANYON	7647		OIL & GAS	BRUSHY CANYON	7647
BONE SPRING 1ST	10168		OIL & GAS	BONE SPRING 1ST	10168
BONE SPRING 2ND	10727		OIL & GAS	BONE SPRING 2ND	10727
BONE SPRING 3RD	11814		OIL & GAS	BONE SPRING 3RD	11814
WOLFCAMP	12272		OIL & GAS	WOLFCAMP	12272

32. Additional remarks (include plugging procedure):  
PLEASE REFERENCE ATTACHMENTS

PLEASE NOTE POOL CHANGE - BOBCAT DRAW; UPPER WOLFCAMP

RAN CEMENT BOND LOG - TOC OF CEMENT FOR 5 1/2" CSG WAS @ 5710', DETERMINED BY CBL

## 33. Circle enclosed attachments:

- |                                                       |                    |               |                       |
|-------------------------------------------------------|--------------------|---------------|-----------------------|
| 1. Electrical/Mechanical Logs (1 full set req'd.)     | 2. Geologic Report | 3. DST Report | 4. Directional Survey |
| 5. Sundry Notice for plugging and cement verification | 6. Core Analysis   | 7 Other:      |                       |

## 34. I hereby certify that the foregoing and attached information is complete and correct as determined from all available records (see attached instructions):

Electronic Submission #432881 Verified by the BLM Well Information System.  
For EOG RESOURCES INC, sent to the Hobbs  
Committed to AFMSS for processing by DUNCAN WHITLOCK on 09/06/2018 (18DW0253SE)

Name (please print) KAY MADDOX

Title REGULATORY SPECIALIST

Signature \_\_\_\_\_ (Electronic Submission)

Date 08/27/2018

Title 18 U.S.C. Section 1001 and Title 43 U.S.C. Section 1212, make it a crime for any person knowingly and willfully to make to any department or agency of the United States any false, fictitious or fraudulent statements or representations as to any matter within its jurisdiction.

**\*\* REVISED \*\* REVISED \*\* REVISED \*\* REVISED \*\* REVISED \*\* REVISED \*\* REVISED \*\* REVISED \*\***

District I  
1625 N French Dr., Hobbs, NM 88240  
Phone: (575) 393-6161 Fax: (575) 393-0720  
District II  
811 S First St., Artesia, NM 88210  
Phone: (575) 748-1283 Fax: (575) 748-9720  
District III  
1000 Rio Brazos Road, Aztec, NM 87410  
Phone: (505) 334-6178 Fax: (505) 334-6170  
District IV  
1220 S. St. Francis Dr., Santa Fe, NM 87505  
Phone: (505) 476-3460 Fax: (505) 476-3462

State of New Mexico  
Energy, Minerals & Natural Resources  
Department  
OIL CONSERVATION DIVISION  
1220 South St. Francis Dr.  
Santa Fe, NM 87505

FORM C-102  
Revised August 1, 2011  
Submit one copy to appropriate  
District Office

AMENDED REPORT

WELL LOCATION AND ACREAGE DEDICATION PLAT

<sup>1</sup> API Number 30-025-43877	<sup>2</sup> Pool Code 98094	<sup>3</sup> Pool Name Bobcat Draw; Upper Wolfcamp
<sup>4</sup> Property Code 38481	<sup>5</sup> Property Name CABALLO 23 FED	<sup>6</sup> Well Number #703H
<sup>7</sup> OGRID No. 7377	<sup>8</sup> Operator Name EOG RESOURCES, INC.	<sup>9</sup> Elevation 3342'

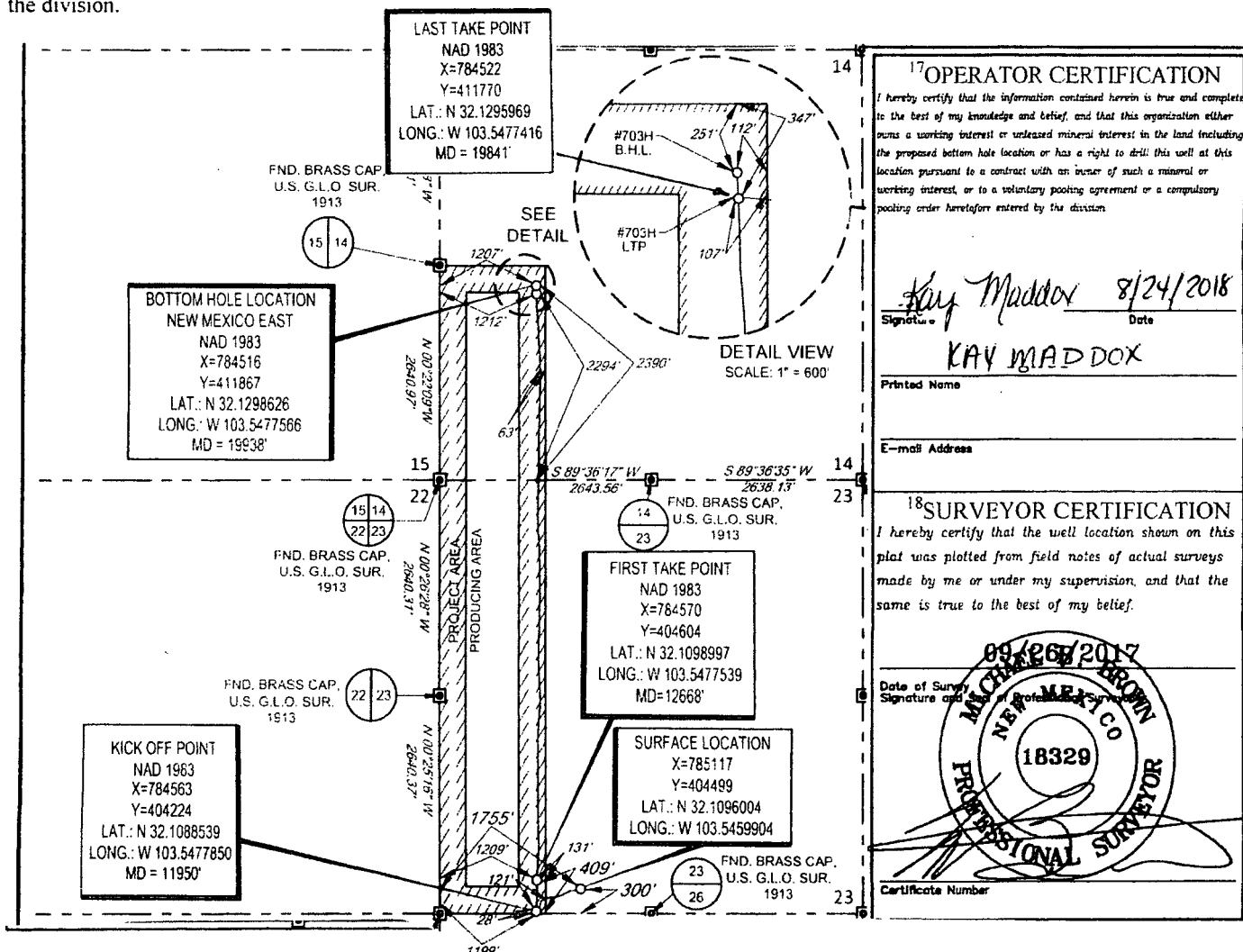
<sup>10</sup>Surface Location

UL or lot no.	Section	Township	Range	Lot Idn	Feet from the	North/South line	Feet from the	East/West line	County
N	23	25-S	33-E	-	300'	SOUTH	1755'	WEST	LEA

UL or lot no.	Section	Township	Range	Lot Idn	Feet from the	North/South line	Feet from the	East/West line	County
L	14	25-S	33-E	-	2390	SOUTH	1207	WEST	LEA

<sup>12</sup> Dedicated Acres 240.00	<sup>13</sup> Joint or Infill	<sup>14</sup> Consolidation Code	<sup>15</sup> Order No.
-----------------------------------------	-------------------------------	----------------------------------	-------------------------

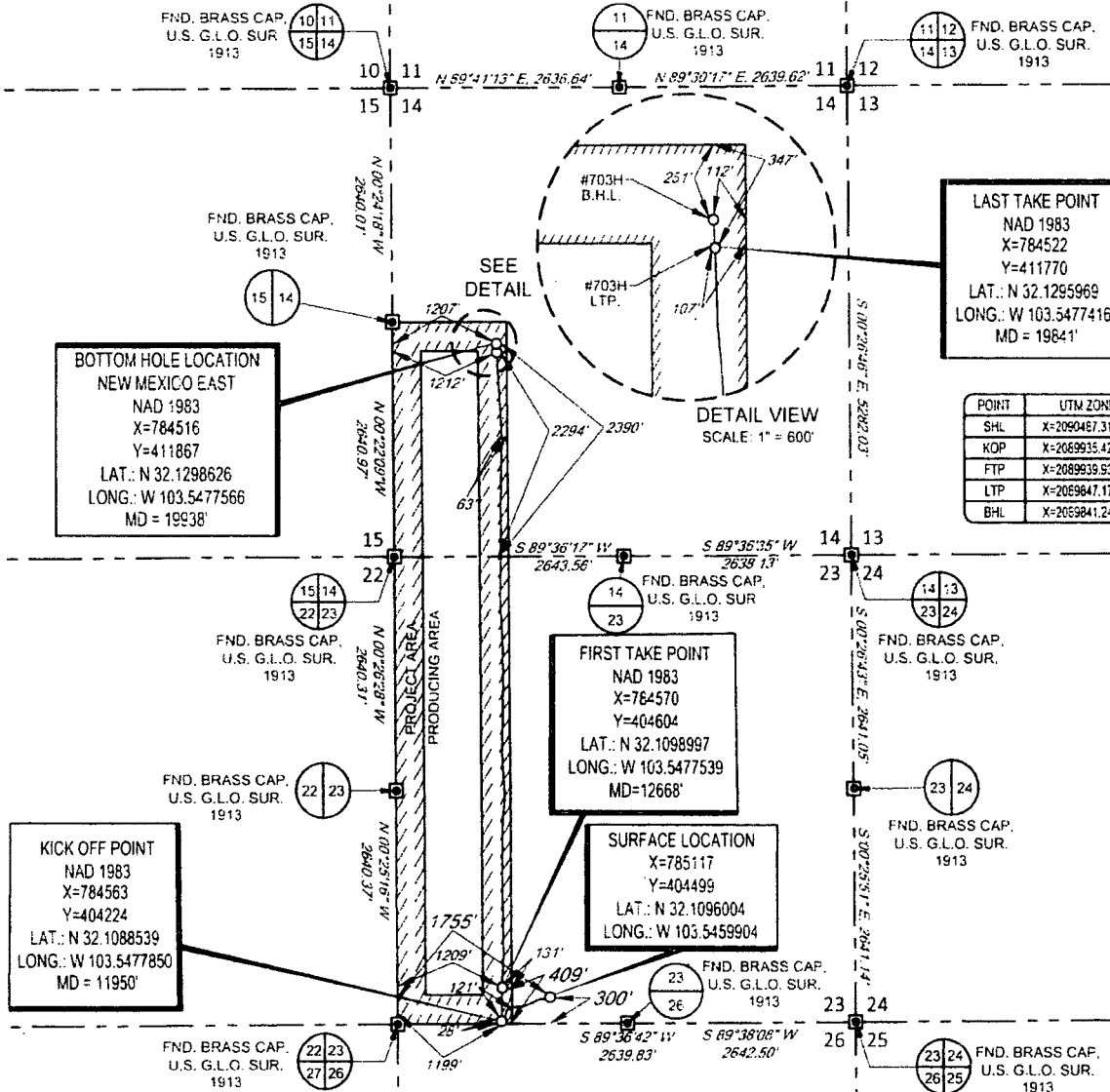
No allowable will be assigned to this completion until all interests have been consolidated or a non-standard unit has been approved by the division.



SCALE: 1" = 2000'

0' 1000' 2000'

SECTION 14 & 23, TOWNSHIP 25-S, RANGE 33-E, N.M.P.M.  
LEA COUNTY, NEW MEXICO



LAST TAKE POINT  
NAD 1983  
X=784522  
Y=411770  
LAT.: N 32.1295969  
LONG.: W 103.5477416  
MD = 19841'

POINT	UTM ZONE 13 COORDINATES
SHL	X=2090467.317 Y=11658472.497
KOP	X=2069935.423 Y=11658193.501
FTP	X=2069939.939 Y=11658573.989
LTP	X=2069847.174 Y=11665736.181
BHL	X=2069841.242 Y=11665834.770

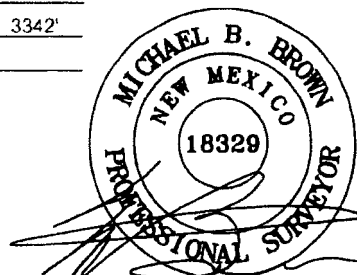
LEASE NAME & WELL NO.: CABALLO 23 FED COM #703H  
SECTION 14 & 23 TWP 25-S RGE 33-E SURVEY N.M.P.M.  
COUNTY LEA STATE NM ELEVATION 3342'  
DESCRIPTION 300' FSL & 1755' FWL



**TOPOGRAPHIC**  
LOYALTY INNOVATION LEGACY

1400 EVERMAN PARKWAY, Ste. 146 • FT. WORTH, TEXAS 76140  
TELEPHONE: (817) 744-7512 • FAX (817) 744-7554  
2903 NORTH BIG SPRING • MIDLAND, TEXAS 79705  
TELEPHONE (432) 682-1653 OR (800) 767-1653 • FAX (432) 682-1743  
WWW.TOPOGRAPHIC.COM

**Geog resources, Inc.**



Michael Blake Brown, P.S. No. 18329  
AUGUST 7, 2018

CABALLO 23 FED COM #703H AS-COMPLETED	REVISION:	
DATE:	08/7/2018	
FILE:	AD_CABALLO_23_FED_COM_703H	
DRAWN BY:	J.D.R.	
SHEET:	1 OF 1	

NOTES:  
1. ORIGINAL DOCUMENT SIZE 8.5" x 11"  
2. ALL BEARINGS, DISTANCES, AND COORDINATE VALUES CONTAINED HEREIN ARE GRID BASED UPON THE NEW MEXICO COORDINATE SYSTEM OF 1983, EAST ZONE U.S. SURVEY FEET.  
3. THIS WELL LOCATION SHOWN HEREON HAS BEEN SURVEYED ON THE GROUND UNDER MY SUPERVISION AND PREPARED ACCORDING TO THE EVIDENCE FOUND AT THE TIME OF SURVEY, AND DATA PROVIDED BY EOG RESOURCES, INC. THIS CERTIFICATION IS MADE AND LIMITED TO THOSE PERSONS OR ENTITIES SHOWN ON THE FACE OF THIS PLAT AND IS NON-TRANSFERABLE. THIS SURVEY IS CERTIFIED FOR THIS TRANSACTION ONLY.