

District I
1625 N. French Dr., Hobbs, NM 88240
Phone: (575) 393-6161 Fax: (575) 393-0720
District II
811 S. First St., Artesia, NM 88210
Phone: (575) 748-1283 Fax: (575) 748-9720
District III
1000 Rio Brazos Road, Aztec, NM 87410
Phone: (505) 334-6178 Fax: (505) 334-6170
District IV
1220 S. St. Francis Dr., Santa Fe, NM 87505
Phone: (505) 476-3460 Fax: (505) 476-3462

State of New Mexico
Energy, Minerals & Natural Resources
Department
OIL CONSERVATION DIVISION
1220 South St. Francis Dr.
Santa Fe, NM 87505

OCD - HOBBS
10/30/2018
RECEIVED

FORM C-102
Revised August 1, 2011
Submit one copy to appropriate
District Office

☐ AMENDED REPORT

WC-025 G-09 S263619C;WOLFCAMP

WELL LOCATION AND ACREAGE DEDICATION PLAT

¹ API Number 30-025- 45311	² Pool Code 98234982XX	³ Pool Name WC-025 G-09 S263619C;WOLFCAMP
⁴ Property Code 322777	⁵ Property Name GOLDEN BELL FED COM 26 36 06	⁶ Well Number 115H
⁷ OGRID No. 372224	⁸ Operator Name AMEREDEV OPERATING, LLC.	⁹ Elevation 3014'

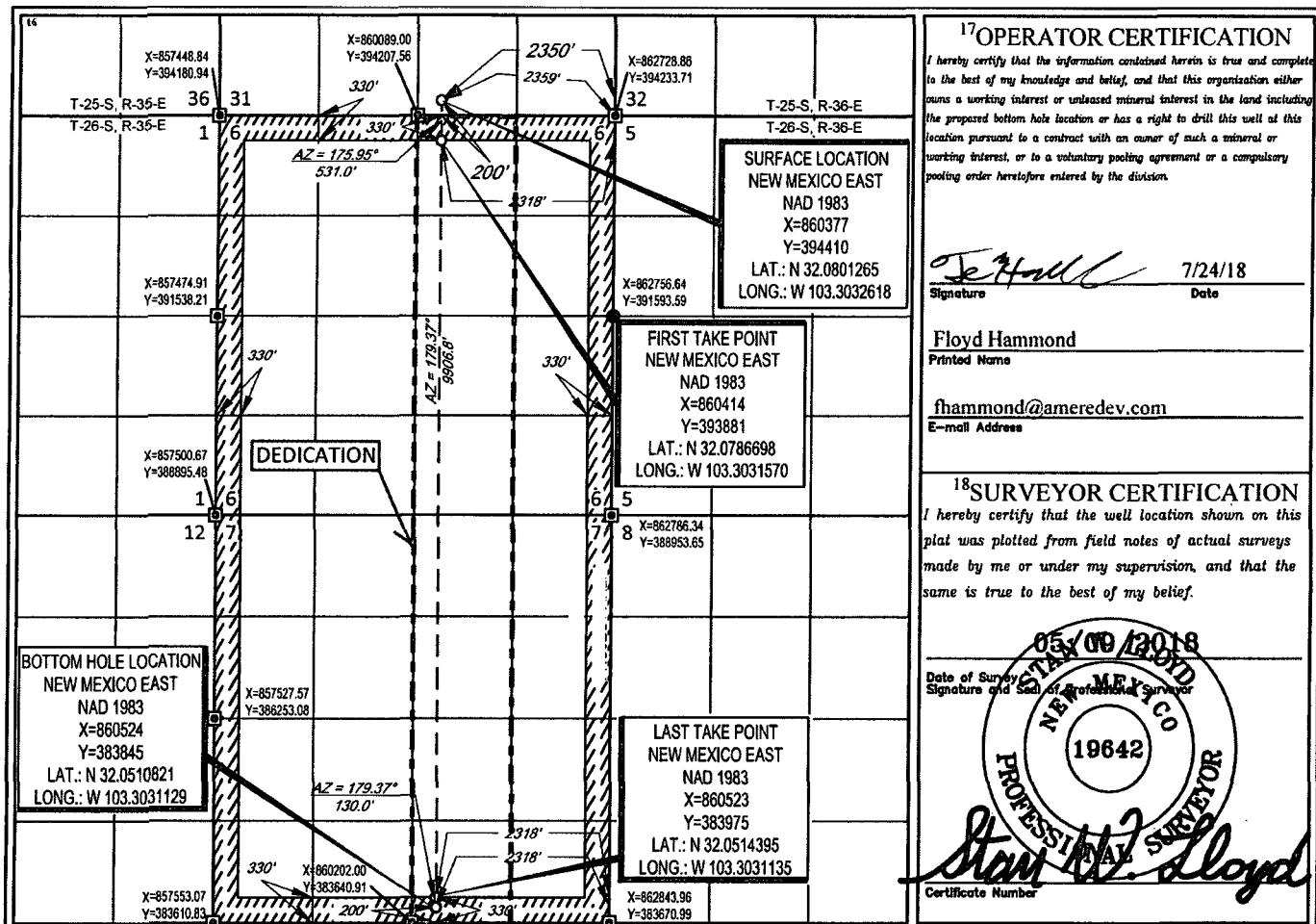
¹⁰Surface Location

UL or lot no.	Section	Township	Range	Lot Idn	Feet from the	North/South line	Feet from the	East/West line	County
0	31	25-S	36-E	-	200'	SOUTH	2350'	EAST	LEA

UL or lot no.	Section	Township	Range	Lot Idn	Feet from the	North/South line	Feet from the	East/West line	County
0	7	26-S	36-E	-	200'	SOUTH	2318'	EAST	LEA

¹² Dedicated Acres	¹³ Joint or Infill	¹⁴ Consolidation Code	¹⁵ Order No.
320		C	

No allowable will be assigned to this completion until all interests have been consolidated or a non-standard unit has been approved by the division.



¹⁷OPERATOR CERTIFICATION

I hereby certify that the information contained herein is true and complete to the best of my knowledge and belief, and that this organization either owns a working interest or unleased mineral interest in the land including the proposed bottom hole location or has a right to drill this well at this location pursuant to a contract with an owner of such a mineral or working interest, or to a voluntary pooling agreement or a compulsory pooling order heretofore entered by the division.

Floyd Hammond 7/24/18
Signature Date

Floyd Hammond
Printed Name

fhammond@ameredev.com
E-mail Address

¹⁸SURVEYOR CERTIFICATION

I hereby certify that the well location shown on this plat was plotted from field notes of actual surveys made by me or under my supervision, and that the same is true to the best of my belief.

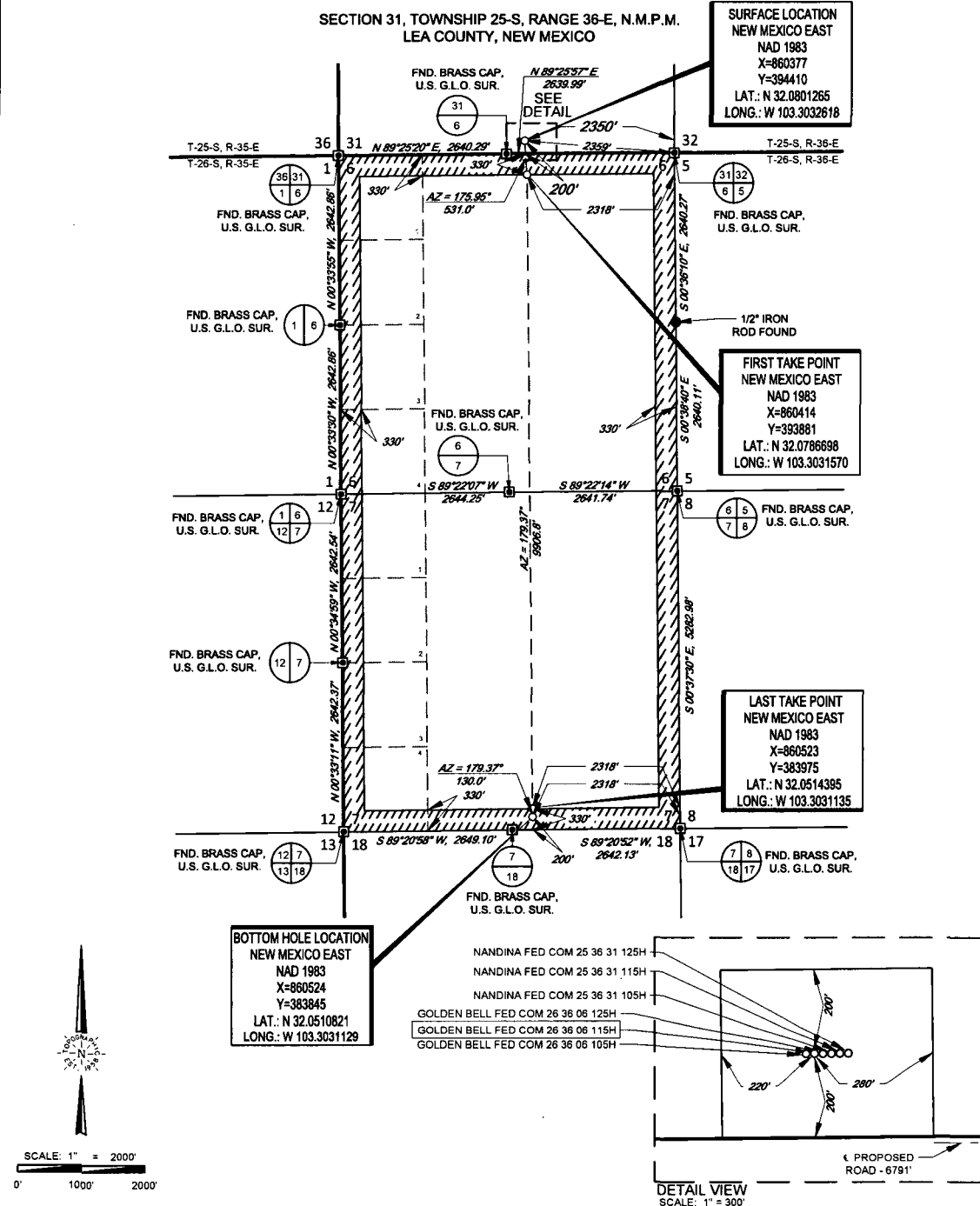
05/09/2018
Date of Survey
Signature and Seal of Professional Surveyor
19642
PROFESSIONAL SURVEYOR
Stan W. Lloyd
Certificate Number

AMEREDEV

AMEREDEV OPERATING, LLC

EXHIBIT 2A

SECTION 31, TOWNSHIP 25-S, RANGE 36-E, N.M.P.M.
LEA COUNTY, NEW MEXICO



LEASE NAME & WELL NO.: GOLDEN BELL FED COM 26 36 06 115H

SECTION 31 TWP 25-S RGE 36-E SURVEY N.M.P.M.
COUNTY LEA STATE NM
DESCRIPTION 200' FSL & 2350' FEL

DISTANCE & DIRECTION

FROM INT. OF NM-205 & 3RD ST./NM-128/FRYING PAN RD., HEAD SOUTH ON
3RD ST./NM-205/FRYING PAN RD. ±3.4 MILES, THENCE WEST (RIGHT) ON
ANTHONY RD. ±0.3 MILES, THENCE NORTH (RIGHT) TO CONTINUE ON
ANTHONY RD. ±0.3 MILES, THENCE EAST (RIGHT) ON PIPELINE RD. ±0.3 MILES,
THENCE NORTH (LEFT) ON A LEASE RD. ±1.0 MILES, THENCE WEST (LEFT) ON
A LEASE RD. ±6791 FEET TO A POINT ±350 FEET SOUTHEAST OF THE
LOCATION.

ALL BEARINGS, DISTANCES, AND COORDINATE VALUES CONTAINED HEREON ARE GRID
BASED UPON THE NEW MEXICO STATE PLANE COORDINATE SYSTEM, EAST ZONE OF THE
NORTH AMERICAN DATUM 1983, U.S. SURVEY FEET

THIS EASEMENT/SERVITUDE LOCATION SHOWN HEREON HAS BEEN SURVEYED ON THE GROUND
UNDER MY SUPERVISION AND PREPARED ACCORDING TO THE EVIDENCE FOUND AT THE TIME OF
SURVEY, AND DATA PROVIDED BY AMEREDEV OPERATING LLC THIS CERTIFICATION IS MADE AND
LIMITED TO THOSE PERSONS OR ENTITIES SHOWN ON THE FACE OF THIS PLAT AND IS
NON-TRANSFERABLE. THIS SURVEY IS CERTIFIED FOR THIS TRANSACTION ONLY.



Stan W. Lloyd, P.S. No. 19642
MAY 14, 2018



TOPOGRAPHIC
LOYALTY INNOVATION LEGACY

1400 EVERMAN PARKWAY, Ste. 146 • FT. WORTH, TEXAS 76140
TELEPHONE: (817) 744-7512 • FAX: (817) 744-7548
2803 NORTH BIG SPRING • MIDLAND, TEXAS 79705
TELEPHONE: (432) 682-1653 OR (800) 767-1653 • FAX: (432) 682-1743
WWW.TOPOGRAPHIC.COM