

District I  
1625 N. French Dr., Hobbs, NM 88240  
Phone: (575) 393-6161 Fax: (575) 393-0720  
District II  
811 S. First St., Artesia, NM 88210  
Phone: (575) 748-1283 Fax: (575) 748-9720  
District III  
1000 Rio Brazos Road, Aztec, NM 87410  
Phone: (505) 334-6178 Fax: (505) 334-6170  
District IV  
1220 S. St. Francis Dr., Santa Fe, NM 87505  
Phone: (505) 476-3460 Fax: (505) 476-3462

**HOBBS OCD**  
State of New Mexico  
Energy, Minerals & Natural Resources  
Department  
**OIL CONSERVATION DIVISION**  
1220 South St. Francis Dr.  
Santa Fe, NM 87505

NOV 04 2018

**RECEIVED**

FORM C-102

Revised August 1, 2011

Submit one copy to appropriate

District Office

☐ AMENDED REPORT

**WELL LOCATION AND ACREAGE DEDICATION PLAT**

<sup>1</sup> API Number 30-025- <b>45318</b>	<sup>2</sup> Pool Code 2220	<sup>3</sup> Pool Name Antelope Ridge; Wolfcamp
<sup>4</sup> Property Code 40398	<sup>5</sup> Property Name <b>JOLLY ROGER 16 STATE</b>	
<sup>6</sup> Well Number <b>#702H</b>	<sup>7</sup> Operator Name <b>EOG RESOURCES, INC.</b>	
<sup>8</sup> OGRID No. 7377	<sup>9</sup> Elevation <b>3556'</b>	

**<sup>10</sup>Surface Location**

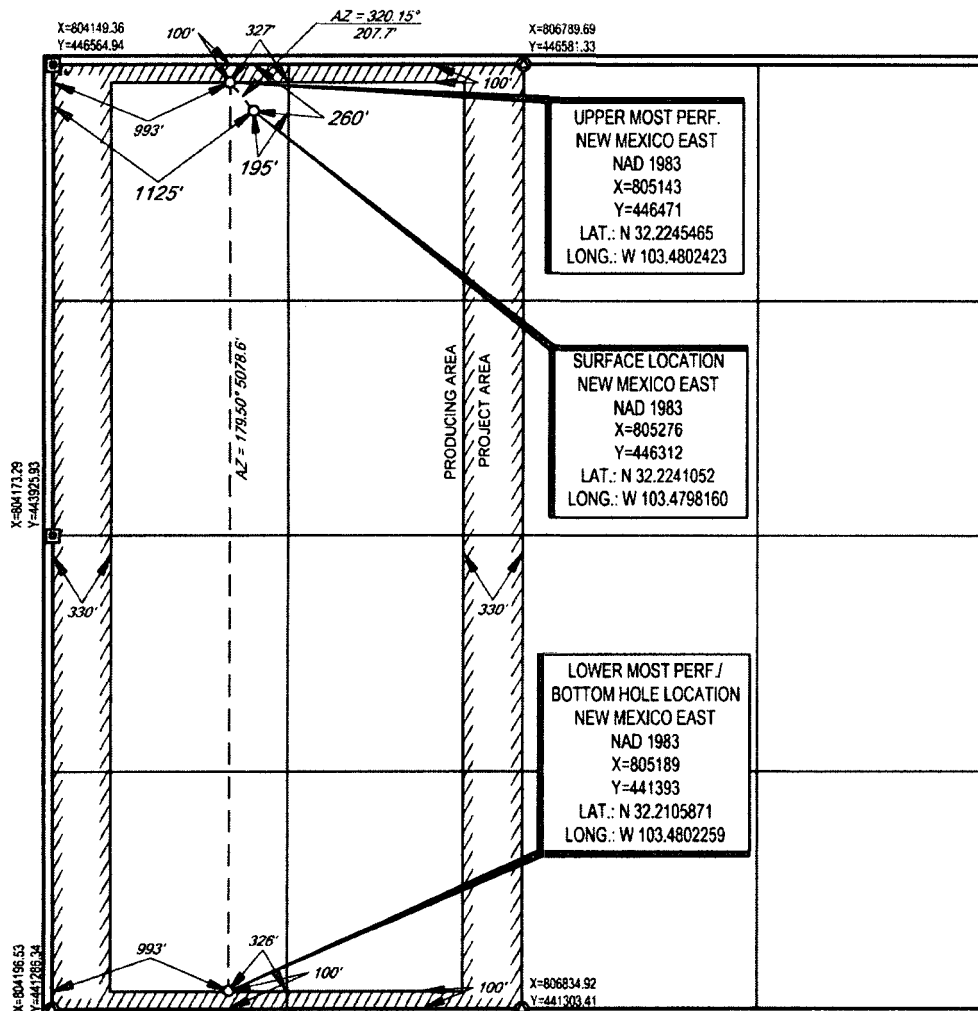
UL or lot no.	Section	Township	Range	Lot Idn	Feet from the	North/South line	Feet from the	East/West line	County
<b>D</b>	<b>16</b>	<b>24-S</b>	<b>34-E</b>	-	<b>260'</b>	<b>NORTH</b>	<b>1125'</b>	<b>WEST</b>	<b>LEA</b>

**<sup>11</sup>Bottom Hole Location If Different From Surface**

UL or lot no.	Section	Township	Range	Lot Idn	Feet from the	North/South line	Feet from the	East/West line	County
<b>M</b>	<b>16</b>	<b>24-S</b>	<b>34-E</b>	-	<b>100'</b>	<b>SOUTH</b>	<b>993'</b>	<b>WEST</b>	<b>LEA</b>

<sup>12</sup> Dedicated Acres <b>320</b>	<sup>13</sup> Joint or Infill	<sup>14</sup> Consolidation Code	<sup>15</sup> Order No.
---	-------------------------------	----------------------------------	-------------------------

No allowable will be assigned to this completion until all interests have been consolidated or a non-standard unit has been approved by the division.



**<sup>17</sup>OPERATOR CERTIFICATION**

I hereby certify that the information contained herein is true and complete to the best of my knowledge and belief, and that this organization either owns a working interest or undivided mineral interest in the land including the proposed bottom hole location or has a right to drill this well at this location pursuant to a contract with an owner of such a mineral or working interest, or to a voluntary pooling agreement or a compulsory pooling order heretofore entered by the division.

*Stan Wagner* 10/30/18  
Signature Date

Stan Wagner  
Printed Name

E-mail Address

**<sup>18</sup>SURVEYOR CERTIFICATION**

I hereby certify that the well location shown on this plat was plotted from field notes of actual surveys made by me or under my supervision, and that the same is true to the best of my belief.

10/04/2018  
Date of Survey  
Signature and Seal of Surveyor  
**MAURICE BROWN**  
NEW MEXICO  
18329  
PROFESSIONAL SURVEYOR  
Certificate Number