

District I
1625 N. French Dr., Hobbs, NM 88240
Phone: (575) 393-6161 Fax: (575) 393-0720
District II
811 S. First St., Artesia, NM 88210
Phone: (575) 748-1283 Fax: (575) 748-9720
District III
1000 Rio Brazos Road, Aztec, NM 87410
Phone: (505) 334-6178 Fax: (505) 334-6170
District IV
1220 S. St. Francis Dr., Santa Fe, NM 87505
Phone: (505) 476-3460 Fax: (505) 476-3462

State of New Mexico
Energy, Minerals & Natural Resources Department
OIL CONSERVATION DIVISION
1220 South St. Francis Dr.
Santa Fe, NM 87505

HOBBS OCD
NOV 07 2018
RECEIVED

Form C-102
Revised August 1, 2011
Submit one copy to appropriate
District Office

☐ AMENDED REPORT

WELL LOCATION AND ACREAGE DEDICATION PLAT

| | | | | | |
|--|--|--|--|--|--|
| ¹ API Number 30-025-45332 | | ² Pool Code 55610 | | ³ Pool Name SCHARB; BONE SPRING | |
| ⁴ Property Code 322825 | | ⁵ Property Name HEREFORD 20/29 B2AH STATE COM | | | ⁶ Well Number 1H |
| ⁷ GRID NO. 14744 | | ⁸ Operator Name MEWBOURNE OIL COMPANY | | | ⁹ Elevation 3812' |

¹⁰ Surface Location

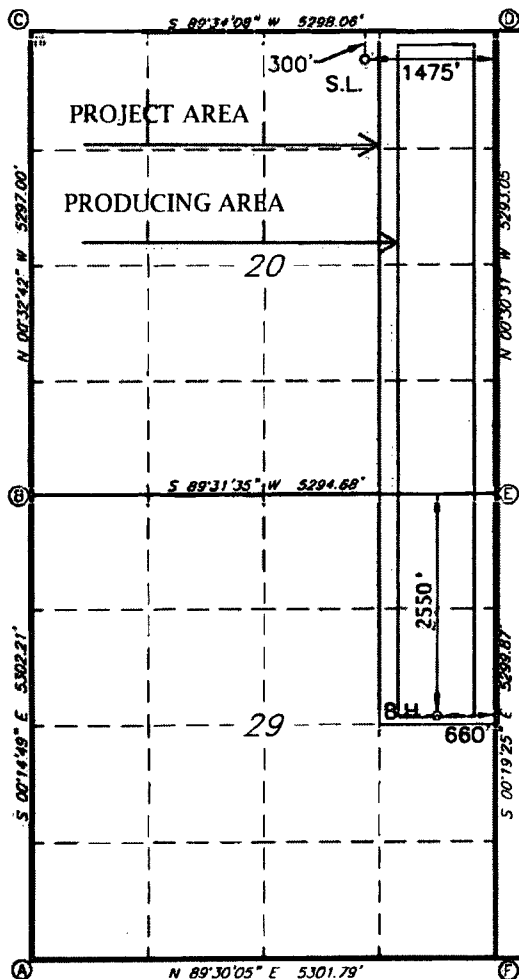
| UL or lot no. | Section | Township | Range | Lot Idn | Feet from the | North/South line | Feet from the | East/West line | County |
|---------------|-----------|------------|------------|---------|---------------|------------------|---------------|----------------|------------|
| B | 20 | 19S | 35E | | 300 | NORTH | 1475 | EAST | LEA |

¹¹ Bottom Hole Location If Different From Surface

| UL or lot no. | Section | Township | Range | Lot Idn | Feet from the | North/South line | Feet from the | East/West line | County |
|---------------|-----------|------------|------------|---------|---------------|------------------|---------------|----------------|------------|
| H | 29 | 19S | 35E | | 2550 | NORTH | 660 | EAST | LEA |

| | | | |
|---|-------------------------------|----------------------------------|-------------------------|
| ¹² Dedicated Acres 240 | ¹³ Joint or Infill | ¹⁴ Consolidation Code | ¹⁵ Order No. |
|---|-------------------------------|----------------------------------|-------------------------|

No allowable will be assigned to this completion until all interest have been consolidated or a non-standard unit has been approved by the division.



GEODETIC DATA
NAD 83 GRID - NM EAST
SURFACE LOCATION
N 602161.4 - E 805314.2
LAT: 32.6524584° N
LONG: 103.4756470° W
BOTTOM HOLE
N 594635.7 - E 806187.8
LAT: 32.6317286° N
LONG: 103.4730098° W
CORNER DATA
NAD 83 GRID - NM EAST
A: FOUND PIPE
N 591835.8 - E 801562.7
B: FOUND 5/8" REBAR
N 597136.9 - E 801539.8
C: FOUND LIMESTONE ROCK
N 602432.6 - E 801489.4
D: FOUND 5/8" REBAR
N 602472.4 - E 806786.3
E: FOUND 1/2" REBAR
N 597180.6 - E 806833.3
F: CALCULATED CORNER
N 591881.9 - E 806863.2

¹⁷ OPERATOR CERTIFICATION

I hereby certify that the information contained herein is true and complete to the best of my knowledge and belief, and that this organization either owns a working interest or unleased mineral interest in the land including the proposed bottom hole location or has a right to drill this well at this location pursuant to a contract with an owner of such a mineral or working interest, or to a voluntary pooling agreement or a compulsory pooling

order previously entered by the division

Bradley Bishop 11-5-18
Signature Date

BRADLEY BISHOP
Printed Name

BBISHOP@MEWBOURNE.COM

E-mail Address

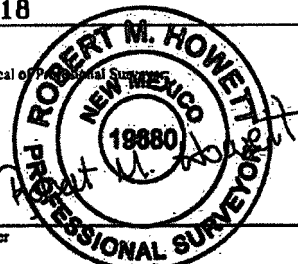
¹⁸ SURVEYOR CERTIFICATION

I hereby certify that the well location shown on this plat was plotted from field notes of actual surveys made by me or under my supervision, and that the same is true and correct to the best of my belief.

11-2-18

Date of Survey

Signature and Seal of Professional Surveyor



19680

Certificate Number

RRC - Job No.: **LS18101229**

LAST TAKE POINT 90' FROM HZSU END
REQUIRES NSL