

UNITED STATES  
DEPARTMENT OF THE INTERIOR  
BUREAU OF LAND MANAGEMENTFORM APPROVED  
OMB NO. 1004-0137  
Expires: January 31, 2018

## SUNDRY NOTICES AND REPORTS ON WELL

Do not use this form for proposals to drill or to re-enter an abandoned well. Use form 3160-3 (APD) for such proposals.

NMLC031740B

6. If Indian, Allottee or Tribe Name

SUBMIT IN TRIPLICATE - Other instructions on page 2

## 1. Type of Well

☒ Oil Well ☐ Gas Well ☐ Other

## 2. Name of Operator

XTO ENERGY INCORPORATED

Contact: PATTY R URIAS

E-Mail: PATTY\_URIAS@XTOENERGY.COM

## 3a. Address

6401 HOLIDAY HILL ROAD BLDG 5  
MIDLAND, TX 79707

## 3b. Phone No. (include area code)

Ph: 432-620-4318

Fx: 432-618-3530

## 4. Location of Well (Footage, Sec., T., R., M., or Survey Description)

Sec 4 T21S R36E NESE 2200FSL 440FEL

7. If Unit or CA/Agreement, Name and/or No.  
73885U49408. Well Name and No.  
EMSU 2389. API Well No.  
30-025-04466-00-S110. Field and Pool or Exploratory Area  
EUNICE MONUMENT-GRAYBURG-SA11. County or Parish, State  
LEA COUNTY, NM

## 12. CHECK THE APPROPRIATE BOX(ES) TO INDICATE NATURE OF NOTICE, REPORT, OR OTHER DATA

TYPE OF SUBMISSION	TYPE OF ACTION			
<input checked="" type="checkbox"/> Notice of Intent	<input type="checkbox"/> Acidize	<input type="checkbox"/> Deepen	<input type="checkbox"/> Production (Start/Resume)	<input type="checkbox"/> Water Shut-Off
<input type="checkbox"/> Subsequent Report	<input type="checkbox"/> Alter Casing	<input type="checkbox"/> Hydraulic Fracturing	<input type="checkbox"/> Reclamation	<input type="checkbox"/> Well Integrity
<input type="checkbox"/> Final Abandonment Notice	<input type="checkbox"/> Casing Repair	<input type="checkbox"/> New Construction	<input type="checkbox"/> Recomplete	<input checked="" type="checkbox"/> Other
	<input type="checkbox"/> Change Plans	<input type="checkbox"/> Plug and Abandon	<input type="checkbox"/> Temporarily Abandon	Venting and/or Flaring
	<input type="checkbox"/> Convert to Injection	<input type="checkbox"/> Plug Back	<input type="checkbox"/> Water Disposal	

13. Describe Proposed or Completed Operation: Clearly state all pertinent details, including estimated starting date of any proposed work and approximate duration thereof. If the proposal is to deepen directionally or recompleat horizontally, give subsurface locations and measured and true vertical depths of all pertinent markers and zones. Attach the Bond under which the work will be performed or provide the Bond No. on file with BLM/BIA. Required subsequent reports must be filed within 30 days following completion of the involved operations. If the operation results in a multiple completion or recompletion in a new interval, a Form 3160-4 must be filed once testing has been completed. Final Abandonment Notices must be filed only after all requirements, including reclamation, have been completed and the operator has determined that the site is ready for final inspection.

## REQUEST FOR FLARE METERING EXCEPTION

## EUNICE SOUTH MONUMENT UNIT SAT #5

Because there is no flare meter at the EMSU SAT #5, XTO Energy Inc. is requesting the BLM acknowledge that its method for estimating volumes of flared production from EMSU SAT #5 complies with NTL-4A and, therefore, that no flare meter is required at the EMSU SAT #5.

XTO estimates the flare start date based on a comparison of the metered sales volume to the daily average sales volumes. Specifically, XTO divides the theoretical flare volume (derived by the difference between the average sales volumes and the actual sales volume for a given duration) by the average daily sales volume and then multiplies that figure by 24 to determine an estimated

APPROVED TILL 12/31/2019

## 14. I hereby certify that the foregoing is true and correct.

Electronic Submission #425487 verified by the BLM Well Information System

For XTO ENERGY INCORPORATED, sent to the Hobbs

Committed to AFMSS for processing by PRISCILLA PEREZ on 10/18/2018 (19PP0155SE)

Name (Printed/Typed) PATTY R URIAS

Title REGULATORY ANALYST

Signature (Electronic Submission)

Date 06/27/2018

## THIS SPACE FOR FEDERAL OR STATE OFFICE USE

Approved By

/s/ Jonathon Shepard

Title

Petroleum Engineer  
Carlsbad Field OfficeOCT 30 2018  
Date

Conditions of approval, if any, are attached. Approval of this notice does not warrant or certify that the applicant holds legal or equitable title to those rights in the subject lease which would entitle the applicant to conduct operations thereon.

Title 18 U.S.C. Section 1001 and Title 43 U.S.C. Section 1212, make it a crime for any person knowingly and willfully to make to any department or agency of the United States any false, fictitious or fraudulent statements or representations as to any matter within its jurisdiction.

(Instructions on page 2)

\*\* BLM REVISED \*\* BLM REVISED \*\* BLM REVISED \*\* BLM REVISED \*\* BLM REVISED \*\*

MSB/ocd  
11/8/2018

## Additional data for EC transaction #425487 that would not fit on the form

### 32. Additional remarks, continued

number of hours.

The sales meter is the first meter for the production (there is no separate production meter). XTO determines the flared volumes by comparing the sales volume during the period of flaring to the average sales volume. Specifically, XTO subtracts the actual sales volume from an average of sales volume (both figures taken from the sales meter). XTO will use a rolling 12 month production average as requested by the BLM for future sundries, as we as revise our prior sundries and OGORs based on the 12 month average.

EMSU Sat #5

#### ASSOCIATED WELLS:

EUNICE MONUMENT SO. UNIT 238 GRBG/SA API #30-025-04466 FEDERAL  
EUNICE MONUMENT SO. UNIT 256 GRBG/SA API #30-025-04495  
EUNICE MONUMENT SO. UNIT 260 GRBG/SA API #30-025-04463 FEDERAL  
EUNICE MONUMENT SO. UNIT 278 GRBG/SA API #30-025-20133  
EUNICE MONUMENT SO. UNIT 280 GRBG/SA API #30-025-04473  
EUNICE MONUMENT SO. UNIT 282 GRBG/SA API #30-025-21902  
EUNICE MONUMENT SO. UNIT 298 GRBG/SA API #30-025-04575  
EUNICE MONUMENT SO. UNIT 300 GRBG/SA API #30-025-04579  
EUNICE MONUMENT SO. UNIT 319 GRBG/SA API #30-025-04584  
EUNICE MONUMENT SO. UNIT 321 GRBG/SA API #30-025-04570 FEDERAL  
EUNICE MONUMENT SO. UNIT 323 GRBG/SA API #30-025-04555  
EUNICE MONUMENT SO. UNIT 462 GRBG/SA API #30-025-29622  
EUNICE MONUMENT SO. UNIT 623 GRBG/SA API #30-025-35455  
EUNICE MONUMENT SO. UNIT 624 GRBG/SA API #30-025-31408  
EUNICE MONUMENT SO. UNIT 626 GRBG/SA API #30-025-31465 FEDERAL  
EUNICE MONUMENT SO. UNIT 628 GRBG/SA API #30-025-37279  
EUNICE MONUMENT SO. UNIT 638 GRBG/SA API #30-025-31426 FEDERAL  
EUNICE MONUMENT SO. UNIT 639 GRBG/SA API #30-025-31409  
EUNICE MONUMENT SO. UNIT 640 GRBG/SA API #30-025-34212  
EUNICE MONUMENT SO. UNIT 653 GRBG/SA API #30-025-34213  
EUNICE MONUMENT SO. UNIT 673 GRBG/SA API #30-025-37320  
EUNICE MONUMENT SO. UNIT 676 GRBG/SA API #30-025-35457  
EUNICE MONUMENT SO. UNIT 695 GRBG/SA API #30-025-35162

# Eunice Monument South Unit Sat 5

Month/Year	Avg Daily total	Rolling 12 Mo Hourly Avg	Rolling 12 Mo Daily Avg			
2008						
January	108	5				
February	106	4				
March	108	5				
April	104	4				
May	96	4				
June	98	4				
July	90	4				
August	87	4				
September	58	2				
October	95	4				
November	62	3				
December	95	4				
12 Month Total		1107				
2009						
January	91	4	91	Total Rolling 12 Months	February-08	to
February	90	4	90	Total Rolling 12 Months	March-08	to
March	87	4	88	Total Rolling 12 Months	April-08	to
April	90	4	87	Total Rolling 12 Months	May-08	to
May	92	4	86	Total Rolling 12 Months	June-08	to
June	93	4	86	Total Rolling 12 Months	July-08	to
July	89	4	86	Total Rolling 12 Months	August-08	to
August	88	4	86	Total Rolling 12 Months	September-08	to
September	84	4	88	Total Rolling 12 Months	October-08	to
October	81	4	87	Total Rolling 12 Months	November-08	to
November	82	4	89	Total Rolling 12 Months	December-08	to
December	81	4	87	Total Rolling 12 Months	January-09	to
12 Month Total		1048				
2010						
January	82	4	87	Total Rolling 12 Months	February-09	to
February	81	4	86	Total Rolling 12 Months	March-09	to
March	82	4	85	Total Rolling 12 Months	April-09	to
April	76	4	84	Total Rolling 12 Months	May-09	to
May	76	3	83	Total Rolling 12 Months	June-09	to
June	75	3	81	Total Rolling 12 Months	July-09	to
July	77	3	80	Total Rolling 12 Months	August-09	to
August	79	3	80	Total Rolling 12 Months	September-09	to
September	74	3	79	Total Rolling 12 Months	October-09	to
October	79	3	79	Total Rolling 12 Months	November-09	to
November	82	3	79	Total Rolling 12 Months	December-09	to
December	90	3	79	Total Rolling 12 Months	January-10	to
12 Month Total		953				

# Eunice Monument South Unit Sat 5

Month/Year	Avg Daily total	Rolling 12 Mo Hourly Avg	Rolling 12 Mo Daily Avg			
<b>2011</b>						
January	82	3	79	Total Rolling 12 Months	February-10	to
February	80	3	79	Total Rolling 12 Months	March-10	to
March	86	3	80	Total Rolling 12 Months	April-10	to
April	85	3	80	Total Rolling 12 Months	May-10	to
May	83	3	81	Total Rolling 12 Months	June-10	to
June	82	3	82	Total Rolling 12 Months	July-10	to
July	87	3	82	Total Rolling 12 Months	August-10	to
August	84	3	83	Total Rolling 12 Months	September-10	to
September	83	3	84	Total Rolling 12 Months	October-10	to
October	85	4	84	Total Rolling 12 Months	November-10	to
November	82	4	84	Total Rolling 12 Months	December-10	to
December	82	3	83	Total Rolling 12 Months	January-11	to
<b>12 Month Total</b>		<b>1001</b>				
<b>2012</b>						
January	81	3	83	Total Rolling 12 Months	February-11	to
February	76	3	83	Total Rolling 12 Months	March-11	to
March	73	3	82	Total Rolling 12 Months	April-11	to
April	74	3	81	Total Rolling 12 Months	May-11	to
May	75	3	80	Total Rolling 12 Months	June-11	to
June	75	3	80	Total Rolling 12 Months	July-11	to
July	72	3	79	Total Rolling 12 Months	August-11	to
August	66	3	77	Total Rolling 12 Months	September-11	to
September	86	3	77	Total Rolling 12 Months	October-11	to
October	61	3	75	Total Rolling 12 Months	November-11	to
November	59	3	73	Total Rolling 12 Months	December-11	to
December	55	3	71	Total Rolling 12 Months	January-12	to
<b>12 Month Total</b>		<b>853</b>				
<b>2013</b>						
January	53	3	62	Total Rolling 12 Months	February-12	to
February	54	3	61	Total Rolling 12 Months	March-12	to
March	53	2	59	Total Rolling 12 Months	April-12	to
April	59	2	58	Total Rolling 12 Months	May-12	to
May	30	2	54	Total Rolling 12 Months	June-12	to
June	87	2	55	Total Rolling 12 Months	July-12	to
July	64	2	55	Total Rolling 12 Months	August-12	to
August	62	2	53	Total Rolling 12 Months	September-12	to
September	65	2	53	Total Rolling 12 Months	October-12	to
October	63	2	54	Total Rolling 12 Months	November-12	to
November	60	2	54	Total Rolling 12 Months	December-12	to
December	54	2	59	Total Rolling 12 Months	January-13	to
<b>12 Month Total</b>		<b>704</b>				

# Eunice Monument South Unit Sat 5

Month/Year	Avg Daily total	Rolling 12 Mo Hourly Avg	Rolling 12 Mo Daily Avg			
<b>2014</b>						
January	58	2	55	Total Rolling 12 Months	February-13	to
February	57	2	55	Total Rolling 12 Months	March-13	to
March	60	2	55	Total Rolling 12 Months	April-13	to
April	60	2	58	Total Rolling 12 Months	May-13	to
May	62	2	55	Total Rolling 12 Months	June-13	to
June	63	2	55	Total Rolling 12 Months	July-13	to
July	63	2	55	Total Rolling 12 Months	August-13	to
August	64	2	55	Total Rolling 12 Months	September-13	to
September	61	2	55	Total Rolling 12 Months	October-13	to
October	59	2	55	Total Rolling 12 Months	November-13	to
November	58	2	55	Total Rolling 12 Months	December-13	to
December	53	2	60	Total Rolling 12 Months	January-14	to
<b>12 Month Total</b>		<b>718</b>				
<b>2015</b>						
January	48	2	54	Total Rolling 12 Months	February-14	to
February	45	2	53	Total Rolling 12 Months	March-14	to
March	47	2	52	Total Rolling 12 Months	April-14	to
April	47	2	51	Total Rolling 12 Months	May-14	to
May	46	2	49	Total Rolling 12 Months	June-14	to
June	46	2	48	Total Rolling 12 Months	July-14	to
July	46	2	46	Total Rolling 12 Months	August-14	to
August	48	2	45	Total Rolling 12 Months	September-14	to
September	49	2	44	Total Rolling 12 Months	October-14	to
October	51	2	44	Total Rolling 12 Months	November-14	to
November	51	2	44	Total Rolling 12 Months	December-14	to
December	52	2	48	Total Rolling 12 Months	January-15	to
<b>12 Month Total</b>		<b>576</b>				
<b>2016</b>						
January	53	2	45	Total Rolling 12 Months	February-15	to
February	52	2	45	Total Rolling 12 Months	March-15	to
March	54	2	46	Total Rolling 12 Months	April-15	to
April	51	2	46	Total Rolling 12 Months	May-15	to
May	51	2	47	Total Rolling 12 Months	June-15	to
June	54	2	47	Total Rolling 12 Months	July-15	to
July	56	2	48	Total Rolling 12 Months	August-15	to
August	50	2	48	Total Rolling 12 Months	September-15	to
September	59	2	49	Total Rolling 12 Months	October-15	to
October	58	2	49	Total Rolling 12 Months	November-15	to
November	57	2	50	Total Rolling 12 Months	December-15	to
December	54	2	54	Total Rolling 12 Months	January-16	to
<b>12 Month Total</b>		<b>649</b>				

# Eunice Monument South Unit Sat 5

Month/Year	Avg Daily total	Rolling 12 Mo Hourly Avg	Rolling 12 Mo Daily Avg			
<b>2017</b>						
January	55	2	50	Total Rolling 12 Months	February-16	to
February	56	2	50	Total Rolling 12 Months	March-16	to
March	56	2	51	Total Rolling 12 Months	April-16	to
<b>12 Month Total</b>		<b>167</b>				

## Eunice Monument South Unit Sat 5

January-09  
February-09  
March-09  
April-09  
May-09  
June-09  
July-09  
August-09  
September-09  
October-09  
November-09  
December-09

January-10  
February-10  
March-10  
April-10  
May-10  
June-10  
July-10  
August-10  
September-10  
October-10  
November-10  
December-10

## Eunice Monument South Unit Sat 5

January-11  
February-11  
March-11  
April-11  
May-11  
June-11  
July-11  
August-11  
September-11  
October-11  
November-11  
December-11

January-12  
February-12  
March-12  
April-12  
May-12  
June-12  
July-12  
August-12  
September-12  
October-12  
November-12  
December-12

January-12  
February-13  
March-13  
April-13  
May-13  
June-13  
July-13  
August-13  
September-13  
October-13  
November-13  
December-13



## Eunice Monument South Unit Sat 5

January-14  
February-14  
March-14  
April-14  
May-14  
June-14  
July-14  
August-14  
September-14  
October-14  
November-14  
December-14

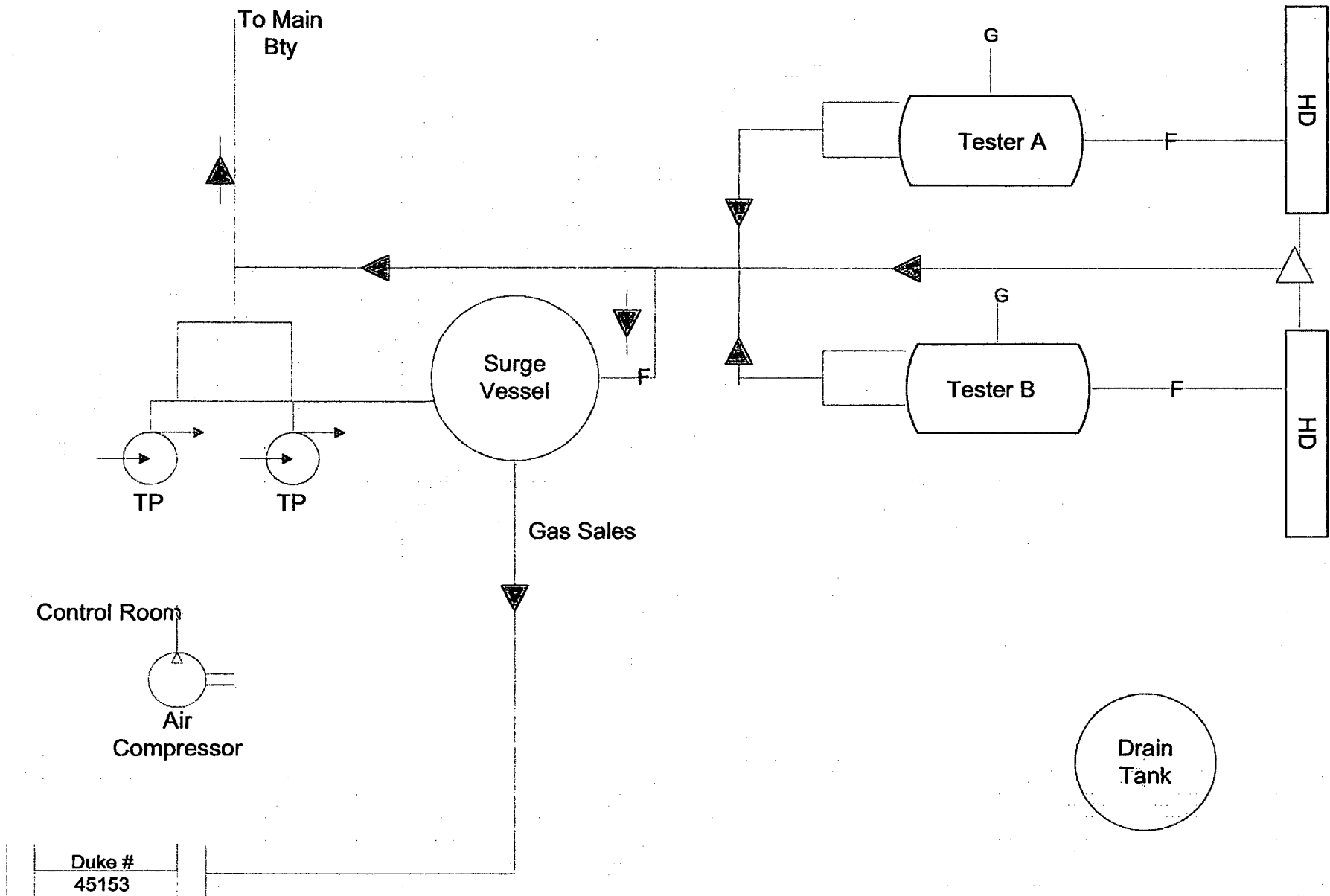
January-15  
February-15  
March-15  
April-15  
May-15  
June-15  
July-15  
August-15  
September-15  
October-15  
November-15  
December-15

January-16  
February-16  
March-16  
April-16  
May-16  
June-16  
July-16  
August-16  
September-16  
October-16  
November-16  
December-16

## Eunice Monument South Unit Sat 5

January-17  
February-17  
March-17

# EMSU Sat 5



# Emsu Sat # 5

