

DISTRICT I

1625 N. French Dr., Hobbs, NM 88240
Phone: (505) 393-6161 Fax: (505) 393-0720

DISTRICT II

811 S. First St., Artesia, NM 88210
Phone: (505) 710-1283 Fax: (505) 710-0720

DISTRICT III

1000 Rio Brazos, Aztec, NM 87410
Phone: (505) 331-6178 Fax: (505) 331-6170

DISTRICT IV

1220 S. St. Francis Dr., Santa Fe, NM 87505
Phone: (505) 176-3160 Fax: (505) 176-3462

State of New Mexico
Energy, Minerals and Natural Resources Department

OIL CONSERVATION DIVISION
1220 South St. Francis Dr.
Santa Fe, New Mexico 87505

Form C-102

Revised August 1, 2011

Submit one copy to appropriate
District Office

WELL LOCATION AND ACREAGE DEDICATION PLAT

☐ AMENDED REPORT

API Number 30-025-45352	Pool Code 96660	Pool Name BERRY;BONE SPRING, SOUTH
Property Code 322866	Property Name CHILES 28-21 STATE COM	Well Number 3H
GRID No. 372031 6137	Operator Name DEVON ENERGY PRODUCTION COMPANY, L.P.	Elevation 3,712'

Surface Location

UL or lot No.	Section	Township	Range	Lot Idn	Feet from the	North/South line	Feet from the	East/West line	County
0	28	21 S	34 E		280'	SOUTH	2370'	EAST	LEA

Bottom Hole if Different From Surface

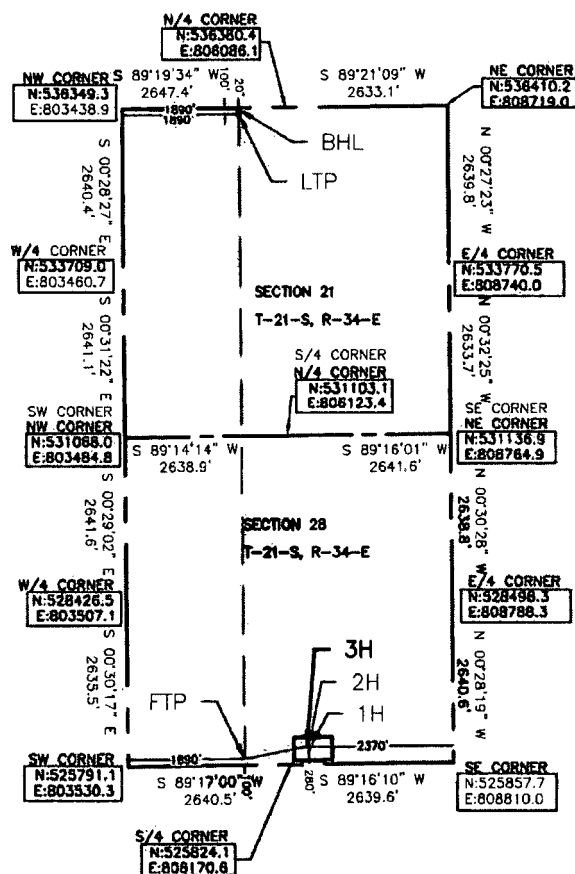
UL or lot No.	Section	Township	Range	Lot Idn	Feet from the	North/South line	Feet from the	East/West line	County
C	21	21 S	34 E		20'	NORTH	1890'	WEST	LEA

Dedicated Acres	Joint or Infill	Consolidation Code	Order No.
320			

NO ALLOWABLE WILL BE ASSIGNED TO THIS COMPLETION UNTIL ALL INTERESTS HAVE BEEN CONSOLIDATED
OR A NON-STANDARD UNIT HAS BEEN APPROVED BY THE DIVISION

NOTES: ALL BEARINGS

RECITED HEREIN ARE
BASED ON THE NEW
MEXICO STATE PLANE
COORDINATE SYSTEM, NAD
83, NEW MEXICO EAST
ZONE 3001, US SURVEY
FEET, ALL DISTANCE ARE
GRID.



OPERATOR CERTIFICATION

I hereby certify that the information contained herein is true and complete to the best of my knowledge and belief, and that this organization either owns a working interest or unleased mineral interest in the land including the proposed bottom hole location pursuant to a contract with an owner of such a mineral or working interest, or to a voluntary pooling agreement or a compulsory pooling order heretofore entered by the division.

Signature: *Rebecca Deal* Date: 11/13/2018
Printed Name: Rebecca Deal, Regulatory Analyst
Email Address: rebecca.deal@dmv.com

SURVEYOR CERTIFICATION

I hereby certify that the well location shown on this plat was plotted from field notes of actual surveys made by me or under my supervision and that the same is true and correct to the best of my belief.

Signature: *GETSY J. SUTHAN* Date: 11/13/2018
Professional Surveyor
New Mexico
Professional Surveyor
No. 13/2018

GETSY J. SUTHAN
Certificate No. 2451

HALFF ASSOCIATES 30015-W0043 SHEET 1

SCALE 1"=3000'

CHILES 28-21 STATE COM 3H

ELEV: 3,712'
LAT: N 32.443404
LONG: W 103.473989

BOTTOM OF HOLE

LAT: N 32.471584
LONG: W 103.477317