

DISTRICT I
1885 N. French Dr., Hobbs, NM 88240
Phone (505) 393-6101 Fax (505) 393-0720

DISTRICT II
811 S. First St., Artesia, NM 88210
Phone (505) 745-1255 Fax (505) 745-0720

DISTRICT III
1000 Rio Brazos Rd., Aztec, NM 87410
Phone (505) 334-6178 Fax (505) 334-6170

DISTRICT IV
1220 S. St. Francis Dr., Santa Fe, NM 87505
Phone (505) 475-8400 Fax (505) 475-8488

State of New Mexico
Energy, Minerals and Natural Resources Department

Form C-102
Revised August 4, 2011

Submit one copy to appropriate
District Office

OIL CONSERVATION DIVISION
1220 South St. Francis Dr. NOV 14 2018
Santa Fe, New Mexico 87505

RECEIVED

WELL LOCATION AND ACREAGE DEDICATION PLAT

AMENDED REPORT

As Drilled

API Number 30-025-45084	Pool Code 97929	Pool Name WC Bone Spring
Property Code 319603	Property Name MERCHANT STATE UNIT	Well Number 601H
GRID No. 372417	Operator Name ADVANCE ENERGY PARTNERS HAT MESA	Elevation 3692'

Surface Location

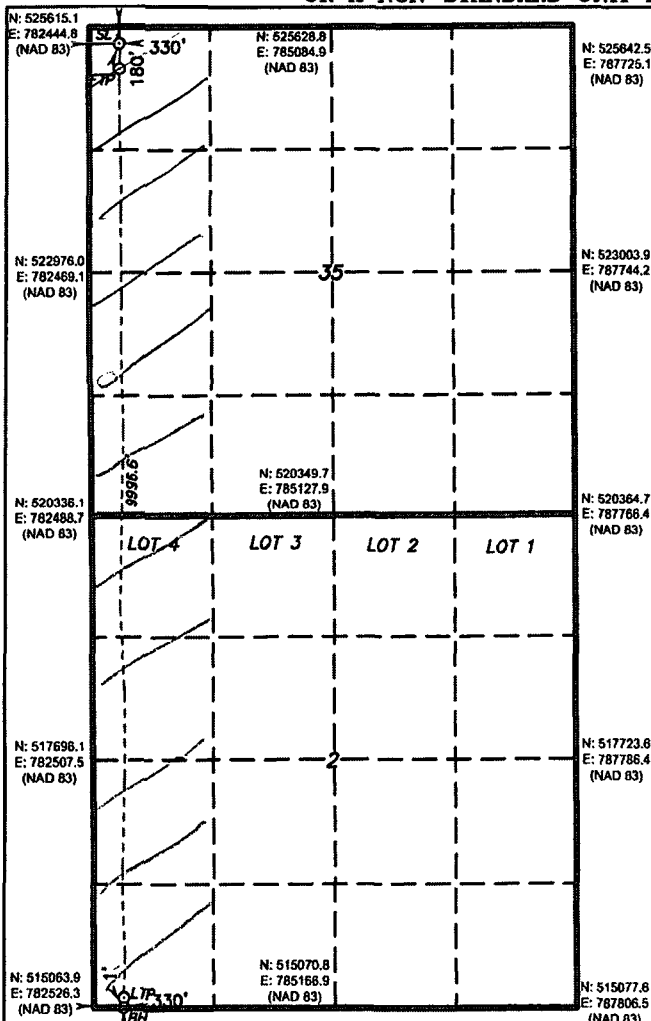
UL or lot No.	Section	Township	Range	Lot Idn	Feet from the	SOUTH/South line	Feet from the	East/West line	County
D	35	21 S	33 E		180	NORTH	330	WEST	LEA

Bottom Hole Location If Different From Surface

UL or lot No.	Section	Township	Range	Lot Idn	Feet from the	SOUTH/South line	Feet from the	East/West line	County
M	2	22 S	33 E		1	SOUTH	330	WEST	LEA

Dedicated Acres 320.04	Joint or Infill	Consolidation Code	Order No.
----------------------------------	-----------------	--------------------	-----------

NO ALLOWABLE WILL BE ASSIGNED TO THIS COMPLETION UNTIL ALL INTERESTS HAVE BEEN CONSOLIDATED
OR A NON-STANDARD UNIT HAS BEEN APPROVED BY THE DIVISION



SURFACE LOCATION

Lat - N 32.442059°
Long - W 103.550699°
NMSPCE - N 525436.9
E 782776.7
(NAD-83)

FIRST TAKE POINT

452' FNL & 333' FWL
Lat - N 32.441313°
Long - W 103.550689°
NMSPCE - N 525165.3
E 782781.8
(NAD-83)

LAST TAKE POINT

108' FSL & 331' FWL
Lat - N 32.413846°
Long - W 103.550684°
NMSPCE - N 515172.6
E 782856.6
(NAD-83)

BOTTOM HOLE LOCATION

Lat - N 32.413552°
Long - W 103.550689°
NMSPCE - N 515065.6
E 782856.0
(NAD-83)

OPERATOR CERTIFICATION

I hereby certify that the information contained herein is true and complete to the best of my knowledge and belief, and that this organization either owns a working interest or undivided mineral interest in the land including the proposed bottom hole location or has a right to drill this well at this location pursuant to a contract with an owner of such a mineral or working interest, or to a voluntary pooling agreement or a compulsory pooling order heretofore entered by the Division.

Signature: *Braden Harris* Date: 11/10/2018

Printed Name: Braden Harris

bharris@advanceenergypartners.com
Email Address

SURVEYOR CERTIFICATION

I hereby certify that the well location shown on this plat was plotted from field notes of actual surveys made by me or under my supervision, and that the same is true and correct to the best of my belief.

NOVEMBER 12 2018
Date Surveyed
Signature & Seal of Professional Surveyor
7977
Certificate No. 7977
BASIN SURVEY

0' 500' 1000' 1500' 2000'
SCALE: 1" = 1000'
WO Num.: 34190