

HOBBS OCD

District I
1625 N. French Dr., Hobbs, NM 88240
Phone: (575) 393-6161 Fax: (575) 393-0720
District II
111 S. First St., Artesia, NM 88210
Phone: (575) 748-1283 Fax: (575) 748-9720
District III
1600 Rio Bravo Road, Artesia, NM 87410
Phone: (505) 334-6178 Fax: (505) 334-6170
District IV
1220 S. St. Francis Dr., Santa Fe, NM 87505
Phone: (505) 476-3480 Fax: (505) 476-3462

State of New Mexico
Energy, Minerals & Natural Resources Department
OIL CONSERVATION DIVISION
1220 South St. Francis Dr.
Santa Fe, NM 87505

NOV 20 2018

Form C-102
Revised August 1, 2011
Submit one copy to appropriate
District Office

RECEIVED

AMENDED REPORT
AS-DRILLED

WELL LOCATION AND ACREAGE DEDICATION PLAT

API Number 30-025-44500	Pool Code 96229	Pool Name Mesa Verde Bone Springs
Property Code 30828	Property Name MESA VERDE BONE SPRING UNIT	Well Number 23H
OGRID No 16696	Operator Name OXY USA INC.	Elevation 3568.2'

Surface Location

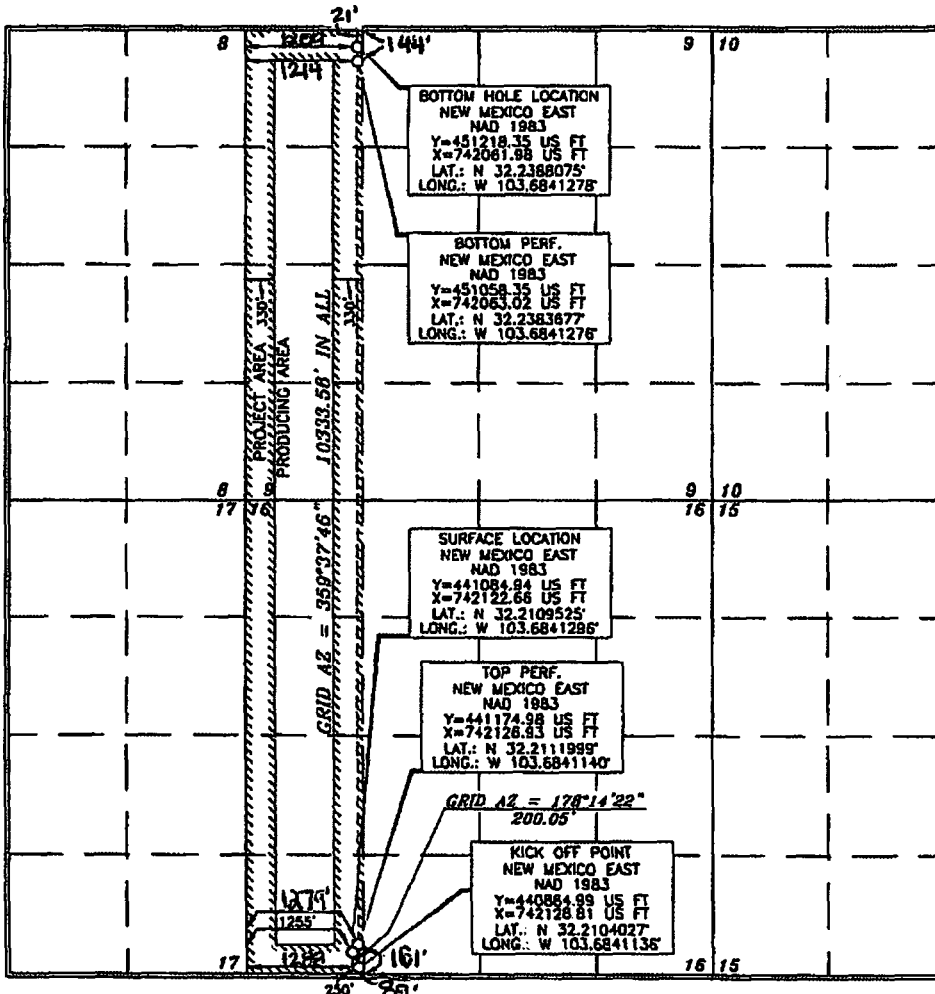
UL or lot no	Section	Township	Range	Lot Idn	Feet from the	North/South line	Feet from the	East/West line	County
M	16	24 SOUTH	32 EAST, N.M.P.M.		250'	SOUTH	1255'	WEST	LEA

Bottom Hole Location If Different From Surface

UL or lot no.	Section	Township	Range	Lot Idn	Feet from the	North/South line	Feet from the	East/West line	County
D	9	24 SOUTH	32 EAST, N.M.P.M.		21	NORTH	1209	WEST	LEA

Dedicated Acres 320	Joint or Infill Y	Consolidation Code	Order No TP/FTP: 161' FSL 1279' FWL BP/LTP: 144' FNL 1214' FWL
------------------------	----------------------	--------------------	--

No allowable will be assigned to this completion until all interests have been consolidated or a non-standard unit has been approved by the division.



OPERATOR CERTIFICATION

I hereby certify that the information contained herein is true and complete to the best of my knowledge and belief, and that this organization either owns a working interest or undivided mineral interest in the land including the proposed bottom hole location or has a right to drill this well at this location pursuant to a contract with an owner of such a mineral or working interest, or to a voluntary pooling agreement or a compulsory pooling order heretofore entered by the division.

Signature: Leslie Reeves 11/19/18
Date: 11/19/18
Printed Name: LESLIE REEVES
E-mail Address: LESLIE-REEVES@oxy.com

SURVEYOR CERTIFICATION

I hereby certify that the well location shown on this plat was plotted from the best of original surveys made by me or under my supervision and that the same is true and correct to the best of my belief.

Date of Survey: JUNE 27, 2017
Signature and Seal: Tommy Dale
Professional Surveyor
Certificate Number: 15079

WOF 170627WL-b (KA)