

District I  
1625 N. French Dr., Hobbs, NM 88240  
Phone: (575) 393-6161 Fax: (575) 393-0720  
District II  
811 S. First St., Artesia, NM 88210  
Phone: (575) 748-1283 Fax: (575) 748-9720  
District III  
1000 Rio Brazos Road, Aztec, NM 87410  
Phone: (505) 334-6178 Fax: (505) 334-6170  
District IV  
1220 S. St. Francis Dr., Santa Fe, NM 87505  
Phone: (505) 476-3460 Fax: (505) 476-3462

State of New Mexico  
Energy, Minerals & Natural Resources Department  
OIL CONSERVATION DIVISION  
1220 South St. Francis Dr.  
Santa Fe, NM 87505

Form C-102  
Revised August 1, 2011  
Submit one copy to appropriate  
District Office

OCD - HOBBS  
11/27/2018  
RECEIVED

☐ AMENDED REPORT

WELL LOCATION AND ACREAGE DEDICATION PLAT

1. Acre Number 30-02545374	2. Pool Code 2220	3. Pool Name ANTELOPE RIDGE: WOLFCAMP
4. Property Code 318028	5. Property Name SHEBA FEDERAL COM	6. Well Number 711H
7. GRID No. 372165	8. Operator Name CENTENNIAL RESOURCE PRODUCTION, LLC	9. Elevation 3494.1'

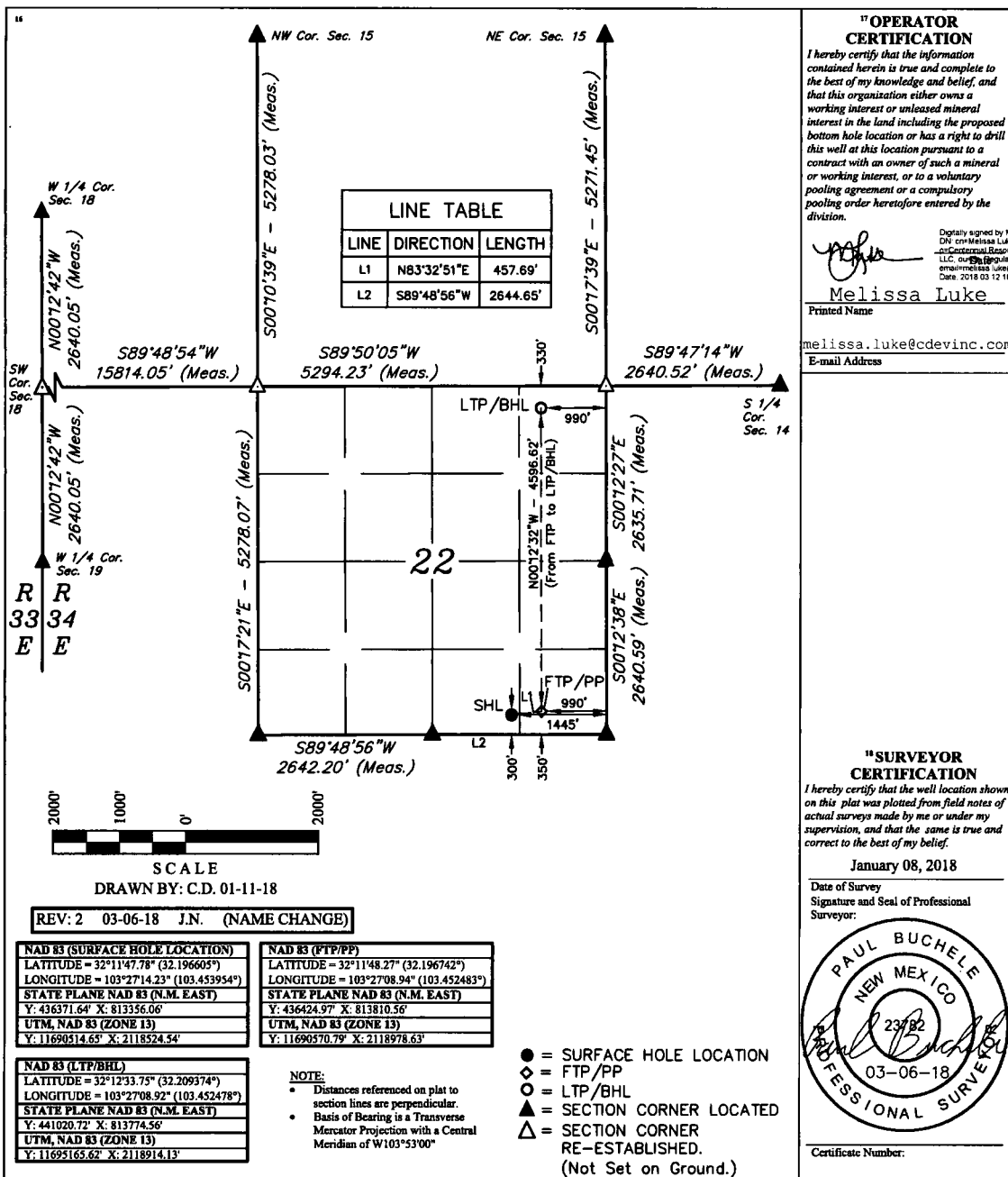
10. Surface Location

UL or lot no.	Section	Township	Range	Let Idn	Feet from the	North/South line	Feet from the	East/West line	County
O	22	24S	34E		300	SOUTH	1445	EAST	LEA

11. Bottom Hole Location If Different From Surface

UL or lot no.	Section	Township	Range	Let Idn	Feet from the	North/South line	Feet from the	East/West line	County
A	22	24S	34E		330	NORTH	990	EAST	LEA
12. Dedicated Acres 160		13. Joint or Infill		14. Consolidation Code		15. Order No.			

No allowable will be assigned to this completion until all interests have been consolidated or a non-standard unit has been approved by the division.



11/27  
RECEIVED

☐ AMENDED REPORT

**LINE TABLE**

LINE	DIRECTION	LENGTH
L1	N83°32'51"E	457.69'
L2	S89°48'56"W	2644.65'

**SCALE**  
DRAWN BY: C.D. 01-11-18

**REV: 2 03-06-18 J.N. (NAME CHANGE)**

**NAD 83 (SURFACE HOLE LOCATION)**  
 LATITUDE = 32°11'47.78" (32.196605°)  
 LONGITUDE = 103°27'14.23" (103.453954°)  
 STATE PLANE NAD 83 (N.M. EAST)  
 Y: 436371.64' X: 813356.06'  
 UTM, NAD 83 (ZONE 13)  
 Y: 11690514.65' X: 2118524.54'

**NAD 83 (FTP/PP)**  
 LATITUDE = 32°11'48.27" (32.196742°)  
 LONGITUDE = 103°27'08.94" (103.452483°)  
 STATE PLANE NAD 83 (N.M. EAST)  
 Y: 436424.97' X: 813810.56'  
 UTM, NAD 83 (ZONE 13)  
 Y: 11690570.79' X: 2118978.63'

**NAD 83 (LTP/BHL)**  
 LATITUDE = 32°12'33.75" (32.209374°)  
 LONGITUDE = 103°27'08.92" (103.452478°)  
 STATE PLANE NAD 83 (N.M. EAST)  
 Y: 441020.72' X: 813774.56'  
 UTM, NAD 83 (ZONE 13)  
 Y: 11695165.62' X: 2118914.13'

**NOTE:**  
 Distances referenced on plat to section lines are perpendicular.  
 Basis of Bearing is a Transverse Mercator Projection with a Central Meridian of W103°53'00"