

District I  
1625 N. French Dr., Hobbs, NM 88240  
Phone: (575) 393-6161 Fax: (575) 393-0720  
District II  
811 S. First St., Artesia, NM 88210  
Phone: (575) 748-1283 Fax: (575) 748-9720  
District III  
1000 Rio Brazos Road, Aztec, NM 87410  
Phone: (505) 334-6178 Fax: (505) 334-6170  
District IV  
1220 S. St. Francis Dr., Santa Fe, NM 87505  
Phone: (505) 476-3460 Fax: (505) 476-3462

State of New Mexico  
Energy, Minerals & Natural Resources Department  
OIL CONSERVATION DIVISION  
1220 South St. Francis Dr.  
Santa Fe, NM 87505

Form C-102  
Revised August 1, 2011  
Submit one copy to appropriate  
District Office

OCD - HOBBS  
11/27/2018  
RECEIVED  
☐ AMENDED REPORT

WELL LOCATION AND ACREAGE DEDICATION PLAT

API Number <b>30-025-45376</b>	Pool Code <b>2220</b>	Well Name <b>ANTELOPE RIDGE, WOLFCAMP</b>
Property Code <b>318029</b>	Property Name <b>SOLOMON FEDERAL COM</b>	Well Number <b>710H</b>
LOGIN No. <b>372165</b>	Operator Name <b>CENTENNIAL RESOURCE PRODUCTION, LLC</b>	Elevation <b>3495.0'</b>

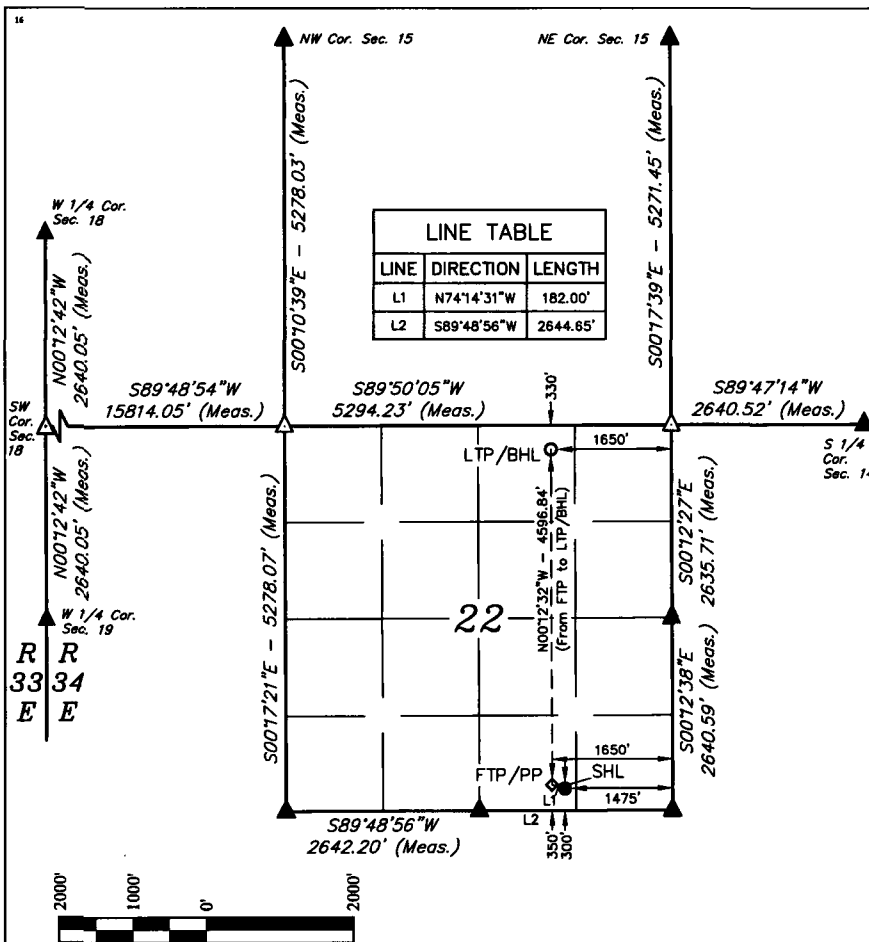
"Surface Location

UL or lot no.	Section	Township	Range	Lot Idn	Feet from the	North/South line	Feet from the	East/West line	County
O	22	24S	34E		300	SOUTH	1475	EAST	LEA

"Bottom Hole Location If Different From Surface

UL or lot no.	Section	Township	Range	Lot Idn	Feet from the	North/South line	Feet from the	East/West line	County
B	22	24S	34E		330	NORTH	1650	EAST	LEA
Dedicated Acres 160		Joint or Infill		Consolidation Code		Order No.			

No allowable will be assigned to this completion until all interests have been consolidated or a non-standard unit has been approved by the division.



SCALE  
DRAWN BY: C.D. 01-11-18

REV: 1 03-01-18 C.D. (FTP TO FTP/PP)

<b>NAD 83 (SURFACE HOLE LOCATION)</b>	<b>NAD 83 (FTP/PP)</b>
LATITUDE = 32°11'47.78" (32.196605°)	LATITUDE = 32°11'48.27" (32.196743°)
LONGITUDE = 103°27'14.58" (103.454051°)	LONGITUDE = 103°27'16.62" (103.454616°)
STATE PLANE NAD 83 (N.M. EAST)	STATE PLANE NAD 83 (N.M. EAST)
Y: 436371.40' X: 813326.02'	Y: 436420.08' X: 813150.68'
UTM, NAD 83 (ZONE 13)	UTM, NAD 83 (ZONE 13)
Y: 11690514.22' X: 2118494.50'	Y: 11690561.81' X: 2118318.89'
<b>NAD 83 (LTP/BHL)</b>	
LATITUDE = 32°12'33.75" (32.209375°)	
LONGITUDE = 103°27'16.60" (103.454611°)	
STATE PLANE NAD 83 (N.M. EAST)	
Y: 441016.06' X: 813114.68'	
UTM, NAD 83 (ZONE 13)	
Y: 11695156.86' X: 2118254.38'	

**NOTE:**  
• Distances referenced on plat to section lines are perpendicular.  
• Basis of Bearing is a Transverse Mercator Projection with a Central Meridian of W103°53'00"

- = SURFACE HOLE LOCATION
- ◆ = FTP/PP
- = LTP/BHL
- ▲ = SECTION CORNER LOCATED
- △ = SECTION CORNER RE-ESTABLISHED. (Not Set on Ground.)

"OPERATOR CERTIFICATION

I hereby certify that the information contained herein is true and complete to the best of my knowledge and belief, and that this organization either owns a working interest or unleased mineral interest in the land including the proposed bottom hole location or has a right to drill this well at this location pursuant to a contract with an owner of such a mineral or working interest, or to a voluntary pooling agreement or a compulsory pooling order heretofore entered by the division.

Digitally signed by Melissa Luke  
DN: cn=Melissa Luke, ou=US, o=Centennial Resource Production, LLC, email=melissa.luke@cdevinc.com, email=melissa.luke@cdevinc.com, Date: 2018.03.12 13:50:49 -0600

Printed Name  
**Melissa Luke**

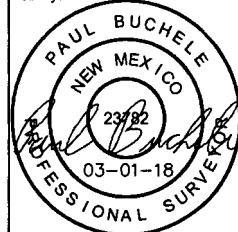
E-mail Address  
**melissa.luke@cdevinc.com**

"SURVEYOR CERTIFICATION

I hereby certify that the well location shown on this plat was plotted from field notes of actual surveys made by me or under my supervision, and that the same is true and correct to the best of my belief.

January 08, 2018

Date of Survey  
Signature and Seal of Professional Surveyor:



Certificate Number:

District I  
1625 N. French Dr., Hobbs, NM 88240  
Phone: (575) 393-6161 Fax: (575) 393-0720  
District II  
811 S. First St., Artesia, NM 88210  
Phone: (575) 748-1283 Fax: (575) 748-9720  
District III  
1000 Rio Brazos Road, Aztec, NM 87410  
Phone: (505) 334-6178 Fax: (505) 334-6170  
District IV  
1220 S. St. Francis Dr., Santa Fe, NM 87505  
Phone: (505) 476-3460 Fax: (505) 476-3462

**LEASE PLAT**  
State of New Mexico  
Energy, Minerals & Natural Resources Department  
**OIL CONSERVATION DIVISION**  
1220 South St. Francis Dr.  
Santa Fe, NM 87505

Form C-102  
Revised August 1, 2011  
Submit one copy to appropriate  
District Office

OCD - HOBBS  
11/27/2018  
RECEIVED

☐ AMENDED REPORT

**WELL LOCATION AND ACREAGE DEDICATION PLAT**

<sup>1</sup> API Number <b>30-025-45376</b>	<sup>2</sup> Pool Code <b>2220</b>	<sup>3</sup> Pool Name <b>ANTELOPE RIDGE;WOLFCAMP</b>
<sup>4</sup> Property Code <b>318029</b>	<sup>5</sup> Property Name <b>SOLOMON FEDERAL COM</b>	<sup>6</sup> Well Number <b>710H</b>
<sup>7</sup> GRID No. <b>372165</b>	<sup>8</sup> Operator Name <b>CENTENNIAL RESOURCE PRODUCTION, LLC</b>	<sup>9</sup> Elevation <b>3495.0'</b>

**"Surface Location**

UL or lot no.	Section	Township	Range	Lot Idn	Feet from the	North/South line	Feet from the	East/West line	County
O	22	24S	34E		300	SOUTH	1475	EAST	LEA

**"Bottom Hole Location If Different From Surface**

UL or lot no.	Section	Township	Range	Lot Idn	Feet from the	North/South line	Feet from the	East/West line	County
B	22	24S	34E		330	NORTH	1650	EAST	LEA

<sup>12</sup> Dedicated Acres <b>160</b>	<sup>13</sup> Joint or Infill	<sup>14</sup> Consolidation Code	<sup>15</sup> Order No.
---	-------------------------------	----------------------------------	-------------------------

No allowable will be assigned to this completion until all interests have been consolidated or a non-standard unit has been approved by the division.

