

UNITED STATES  
DEPARTMENT OF THE INTERIOR  
BUREAU OF LAND MANAGEMENTFORM APPROVED  
OMB No. 1004-0137  
Expires: July 31, 2010

## WELL COMPLETION OR RECOMPLETION REPORT AND LOG

5. Lease Serial No.  
NMNM144921a. Type of Well ☒ Oil Well ☐ Gas Well ☐ Dry ☐ Otherb. Type of Completion ☒ New Well ☐ Work Over ☐ Deepen ☐ Plug Back ☐ Diff. Ream  
Other \_\_\_\_\_2. Name of Operator  
BTA OIL PRODUCERSContact: KATY REDDELL  
E-Mail: kredell@btaoil.com3. Address 104 SOUTH PECOS STREET  
MIDLAND, TX 797013a. Phone No. (include area code)  
Ph: 432-682-3753 Ext: 139

6. If Indian, Allottee or Tribe Name

7. Unit or CA Agreement Name and No.

8. Lease Name and Well No.  
MESA 8105 JV-P 4H9. API Well No.  
30-025-42842-00-S1

4. Location of Well (Report location clearly and in accordance with Federal requirements)\*

At surface NENW 330FNL 1399FWL 32.063977 N Lat, 103.649249 W Lon

At top prod interval reported below NENW 330FNL 1399FWL 32.063977 N Lat, 103.649249 W Lon

At total depth SESW 230FSL 1336FWL

10. Field and Pool, or Exploratory  
JENNINGS11. Sec., T., R., M., or Block and Survey  
or Area Sec 11 T26S R32E Mer NMP12. County or Parish  
LEA13. State  
NM14. Date Spudded  
11/22/201515. Date T.D. Reached  
12/09/201516. Date Completed  
☐ D & A ☒ Ready to Prod.  
02/09/201617. Elevations (DF, KB, RT, GL)\*  
3244 GL18. Total Depth: MD  
TVD14253  
962019. Plug Back T.D.: MD  
TVDMD  
TVD20. Depth Bridge Plug Set: MD  
TVD21. Type Electric & Other Mechanical Logs Run (Submit copy of each)  
GR22. Was well cored? ☒ No ☐ Yes (Submit analysis)  
Was DST run? ☒ No ☐ Yes (Submit analysis)  
Directional Survey? ☐ No ☒ Yes (Submit analysis)

## 23. Casing and Liner Record (Report all strings set in well)

Hole Size	Size/Grade	Wt. (#/ft.)	Top (MD)	Bottom (MD)	Stage Cementer Depth	No. of Sk. & Type of Cement	Slurry Vol. (BBL)	Cement Top*	Amount Pulled
17.500	13.375 J-55	54.5	0	801		770		0	
12.250	9.625 J-55	40.0	0	4570		1460		0	
8.500	5.500 HCP-110	17.0	0	14355		1745		700	

## 24. Tubing Record

Size	Depth Set (MD)	Packer Depth (MD)	Size	Depth Set (MD)	Packer Depth (MD)	Size	Depth Set (MD)	Packer Depth (MD)
2.875	9288	9258						

## 25. Producing Intervals

Formation	Top	Bottom	Perforated Interval	Size	No. Holes	Perf. Status
BONE SPRINGS UPPER SHAL			10122 TO 14230			OPEN
B) BONE SPRING	8808	9717				
C)						
D)						

## 27. Acid, Fracture, Treatment, Cement Squeeze, Etc.

Depth Interval	Amount and Type of Material
10122 TO 14230	173.610 BBLs FLUID; 3610 TONS SAND

## 28. Production - Interval A

Date First Produced	Test Date	Hours Tested	Test Production	Oil BBL	Gas MCF	Water BBL	Oil Gravity Corr. API	Gas Gravity	Production Method
02/09/2016	02/16/2016	24	→	50.0	33.0	584.0			FLows FROM WELL
Choke Size	Tbg. Press. Flwg. SI	Csg. Press.	24 Hr. Rate	Oil BBL	Gas MCF	Water BBL	Gas:Oil Ratio	Well Status	
32/64	780		→	50	33	584		POW	

## 28a. Production - Interval B

Date First Produced	Test Date	Hours Tested	Test Production	Oil BBL	Gas MCF	Water BBL	Oil Gravity Corr. API	Gas Gravity	Production Method
			→						
Choke Size	Tbg. Press. Flwg. SI	Csg. Press.	24 Hr. Rate	Oil BBL	Gas MCF	Water BBL	Gas:Oil Ratio	Well Status	
			→						

(See Instructions and spaces for additional data on reverse side)

ELECTRONIC SUBMISSION #440484 VERIFIED BY THE BLM WELL INFORMATION SYSTEM

\*\* BLM REVISED \*\* BLM REVISED \*\* BLM REVISED \*\* BLM REVISED \*\* BLM REVISED \*\*

Reclamation was due: 8/9/2016

OCD Hobbs

HOBBS OCD

NOV 29 2018

RECEIVED

ACCEPTED FOR RECORD  
NOV 10 2018  
BUREAU OF LAND MANAGEMENT  
CARLSBAD FIELD OFFICE

## 28b. Production - Interval C

Date First Produced	Test Date	Hours Tested	Test Production →	Oil BBL	Gas MCF	Water BBL	Oil Gravity Corr. API	Gas Gravity	Production Method
Choke Size	Tbg. Press. Flwg. SI	Csg. Press.	24 Hr. Rate →	Oil BBL	Gas MCF	Water BBL	Gas:Oil Ratio	Well Status	

## 28c. Production - Interval D

Date First Produced	Test Date	Hours Tested	Test Production →	Oil BBL	Gas MCF	Water BBL	Oil Gravity Corr. API	Gas Gravity	Production Method
Choke Size	Tbg. Press. Flwg. SI	Csg. Press.	24 Hr. Rate →	Oil BBL	Gas MCF	Water BBL	Gas:Oil Ratio	Well Status	

## 29. Disposition of Gas(Sold, used for fuel, vented, etc.)

SOLD

## 30. Summary of Porous Zones (Include Aquifers):

Show all important zones of porosity and contents thereof: Cored intervals and all drill-stem tests, including depth interval tested, cushion used, time tool open, flowing and shut-in pressures and recoveries.

## 31. Formation (Log) Markers

Formation	Top	Bottom	Descriptions, Contents, etc.	Name	Top Meas. Depth
BONE SPRING	8808	9717	OIL, GAS , WATER	DELAWARE CHERRY CANYON BRUSHY CANYON BONE SPRING AVALON	4622 5809 7169 8808 9080

## 32. Additional remarks (include plugging procedure):

## 33. Circle enclosed attachments:

- |   |                    |               |                       |
|---|--------------------|---------------|-----------------------|
| 1. Electrical/Mechanical Logs (1 full set req'd.)     | 2. Geologic Report | 3. DST Report | 4. Directional Survey |
| 5. Sundry Notice for plugging and cement verification | 6. Core Analysis   | 7 Other:      |                       |

## 34. I hereby certify that the foregoing and attached information is complete and correct as determined from all available records (see attached instructions):

Electronic Submission #440484 Verified by the BLM Well Information System.

For BTA OIL PRODUCERS, sent to the Hobbs

Committed to AFMSS for processing by DUNCAN WHITLOCK on 10/22/2018 (19DW0045SE)

Name (please print) KATY REDDELL

Title REGULATORY ANALYST

Signature (Electronic Submission)

Date 10/19/2018

Title 18 U.S.C. Section 1001 and Title 43 U.S.C. Section 1212, make it a crime for any person knowingly and willfully to make to any department or agency of the United States any false, fictitious or fraudulent statements or representations as to any matter within its jurisdiction.

**\*\* REVISED \*\* REVISED \*\* REVISED \*\* REVISED \*\* REVISED \*\* REVISED \*\* REVISED \*\* REVISED \*\***

DISTRICT I  
1625 N. French Dr., Hobbs, NM 88240  
Phone: (575) 393-6161 Fax: (575) 393-0720  
DISTRICT II  
811 S. First St., Artesia, NM 88210  
Phone: (575) 748-1283 Fax: (575) 748-9720  
DISTRICT III  
1000 Rio Brazos Road, Aztec, NM 87410  
Phone: (505) 334-6178 Fax: (505) 334-6170  
DISTRICT IV  
1220 S. St. Francis Dr., Santa Fe, NM 87505  
Phone: (505) 476-3460 Fax: (505) 476-3462

State of New Mexico  
Energy, Minerals & Natural Resources Department  
OIL CONSERVATION DIVISION  
1220 South St. Francis Dr.  
Santa Fe, New Mexico 87505

Form C-102  
Revised August 1, 2011  
Submit one copy to appropriate  
District Office

□ AMENDED REPORT

WELL LOCATION AND ACREAGE DEDICATION PLAT

API Number	Pool Code	Pool Name
Property Code	Property Name <b>MESA 8105 JV-P</b>	Well Number <b>4H</b>
OGRID No.	Operator Name <b>BTA OIL PRODUCERS, LLC</b>	Elevation <b>3244'</b>

Surface Location

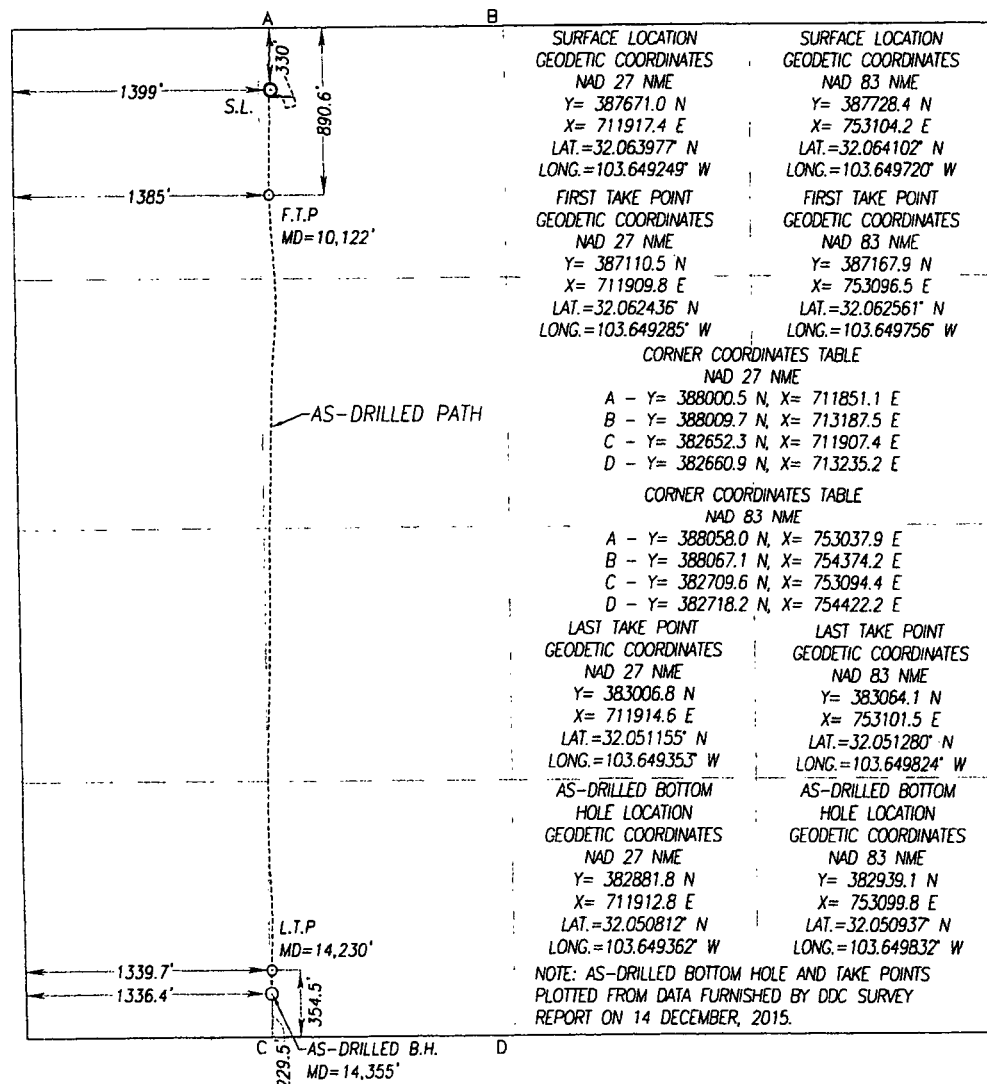
UL or lot No.	Section	Township	Range	Lot Idn	Feet from the	North/South line	Feet from the	East/West line	County
C	11	26-S	32-E		330	NORTH	1399	WEST	LEA

As-Drilled Bottom Hole Location If Different From Surface

UL or lot No.	Section	Township	Range	Lot Idn	Feet from the	North/South line	Feet from the	East/West line	County
N	11	26-S	32-E		229.5	SOUTH	1336.4	WEST	LEA

Dedicated Acres	Joint or Infill	Consolidation Code	Order No.

NO ALLOWABLE WILL BE ASSIGNED TO THIS COMPLETION UNTIL ALL INTERESTS HAVE BEEN CONSOLIDATED OR A NON-STANDARD UNIT HAS BEEN APPROVED BY THE DIVISION



OPERATOR CERTIFICATION

I hereby certify that the information herein is true and complete to the best of my knowledge and belief, and that this organization either owns a working interest or unleased mineral interest in the land including the proposed bottom hole location or has a right to drill this well at this location pursuant to a contract with an owner of such mineral or working interest, or to a voluntary pooling agreement or a compulsory pooling order heretofore entered by the division.

Signature \_\_\_\_\_ Date \_\_\_\_\_

Printed Name \_\_\_\_\_

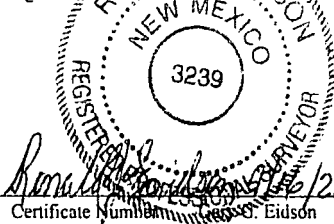
E-mail Address \_\_\_\_\_

SURVEYOR CERTIFICATION

I hereby certify that the well location shown on this plat was plotted from field notes of actual surveys made by me or under my supervision, and that the same is true and correct to the best of my belief.

FEBRUARY 20, 2017

Date of Survey \_\_\_\_\_  
Signature of Professional Surveyor: \_\_\_\_\_



Certificate Number \_\_\_\_\_  
Ronald J. Eidson 12641  
Ronald J. Eidson 3239

ACK REL. W.O. 14110813 JWSC W.O. 18.13.0394