

District I
1625 N. French Dr., Hobbs, NM 88240
Phone: (505) 393-6161 Fax: (505) 393-0720
District II
811 S. First St., Artesia, NM 88210
Phone: (505) 748-1283 Fax: (505) 748-9720
District III
1000 Rio Brazos Road, Aztec, NM 87410
Phone: (505) 334-6178 Fax: (505) 334-6170
District IV
1220 S. St. Francis Dr., Santa Fe, NM 87505
Phone: (505) 476-3460 Fax: (505) 476-3462

State of New Mexico
Energy, Minerals & Natural Resources Department
OIL CONSERVATION DIVISION
1220 South St. Francis Dr.
Santa Fe, NM 87505

Form C-102
Revised August 1, 2011
Submit one copy to appropriate
District Office

RECEIVED
DEC 10 2018
HOBBS

☐ AMENDED REPORT

5/0

WELL LOCATION AND ACREAGE DEDICATION PLAT

¹ API Number 30-025-46401	² Pool Code 28435	³ Pool Name GRAMA RIDGE NE; BONE SPRING, NE
⁴ Property Code 722979	⁵ Property Name DOLLY VARDEN 25/24 B2FC STATE COM	
⁷ GRID NO. 14744	⁸ Operator Name MEWBOURNE OIL COMPANY	⁶ Well Number 1H
		⁹ Elevation 3641'

¹⁰ Surface Location

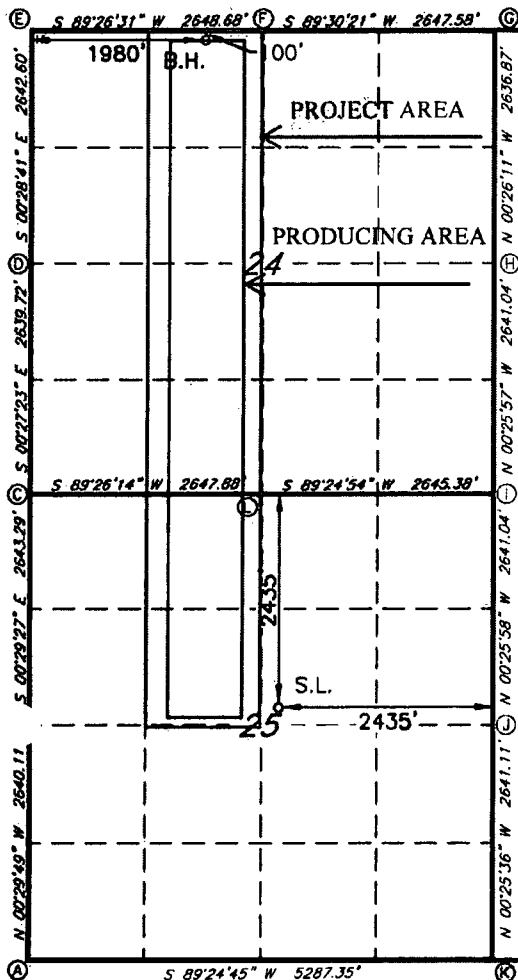
UL or lot no.	Section	Township	Range	Lot Idn	Feet from the	North/South line	Feet from the	East/West line	County
G	25	21S	34E		2435	NORTH	2435	EAST	LEA

¹¹ Bottom Hole Location If Different From Surface

UL or lot no.	Section	Township	Range	Lot Idn	Feet from the	North/South line	Feet from the	East/West line	County
C	24	21S	34E		100	NORTH	1980	WEST	LEA

¹² Dedicated Acres 240	¹³ Joint or Infill	¹⁴ Consolidation Code	¹⁵ Order No.
---	-------------------------------	----------------------------------	-------------------------

No allowable will be assigned to this completion until all interest have been consolidated or a non-standard unit has been approved by the division.



GEODETIC DATA
NAD 83 GRID - NM EAST
SURFACE LOCATION
N 528845.6 - E 822198.7
LAT: 32.4505694° N
LONG: 103.4228301° W
BOTTOM HOLE
N 536452.5 - E 821260.1
LAT: 32.4714985° N
LONG: 103.4256630° W
CORNER DATA
NAD 83 GRID - NM EAST
A: FOUND BRASS CAP "1913"
N 525969.8 - E 819368.3
B: FOUND BRASS CAP "1913"
N 528609.3 - E 819345.4
C: FOUND BRASS CAP "1913"
N 531252.0 - E 819322.8
D: FOUND BRASS CAP "1913"
N 533891.2 - E 819301.8
E: FOUND BRASS CAP "1913"
N 536533.2 - E 819279.7
F: FOUND BRASS CAP "1913"
N 536559.0 - E 821927.8
G: FOUND 3/4" REBAR
N 536581.8 - E 824574.8
H: FOUND 9"x3"x5"
LIMESTONE ROCK
N 533945.5 - E 824594.9
I: CALCULATED CORNER
N 531305.0 - E 824614.8
J: FOUND 8"x6"x4"
LIMESTONE ROCK
N 528664.5 - E 824634.8
K: FOUND 3/4" REBAR
N 526024.0 - E 824654.4
L: FOUND BRASS CAP "1913"
N 531278.0 - E 821970.1

¹⁷ OPERATOR CERTIFICATION

I hereby certify that the information contained herein is true and complete to the best of my knowledge and belief, and that this organization either owns a working interest or unleased mineral interest in the land including the proposed bottom hole location or has a right to drill this well at this location pursuant to a contract with an owner of such a mineral or working interest, or to a voluntary pooling agreement or a compulsory pooling order heretofore entered by the division.

Signature: *Bradley Bishop* Date: **12-6-18**
Printed Name: **BRADLEY BISHOP**
E-mail Address: **BBISHOP@MEWBOURNE.COM**

¹⁸ SURVEYOR CERTIFICATION

I hereby certify that the well location shown on this plat was plotted from field notes of actual surveys made by me or under my supervision, and that the same is true and correct to the best of my belief.

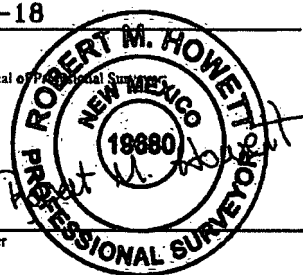
10-19-18

Date of Survey

Signature and Seal of Professional Surveyor

19680

Certificate Number



RRC - Job No.: **LS18101202**

District I
1625 N. French Dr., Hobbs, NM 88240
District II
811 S. First St., Artesia, NM 88210
District III
1000 Rio Brazos Road, Aztec, NM 87410
District IV
1220 S. St. Francis Dr., Santa Fe, NM 87505

State of New Mexico
Energy, Minerals and Natural Resources Department
Oil Conservation Division
1220 South St. Francis Dr.
Santa Fe, NM 87505

Submit Original
to Appropriate
District Office

HOBBES
DEC 10 2018
RECEIVED

GAS CAPTURE PLAN

Date: 12-6-18

☒ Original

Operator & OGRID No.: Mewbourne Oil Company - 14744

☐ Amended - Reason for Amendment:

This Gas Capture Plan outlines actions to be taken by the Operator to reduce well/production facility flaring/venting for new completion (new drill, recomple to new zone, re-frac) activity.

Note: Form C-129 must be submitted and approved prior to exceeding 60 days allowed by Rule (Subsection A of 19.15.18.12 NMAC).

Well(s)/Production Facility – Name of facility

The well(s) that will be located at the production facility are shown in the table below.

Well Name	API	Well Location (ULSTR)	Footages	Expected MCF/D	Flared or Vented	Comments
Dolly Varden 25/24 B2FC State Com #104	30-025-48401	G-25-21S-34E	2435 FNL & 2435 FHL	0	NA	ONLINE AFTER FRAC

Gathering System and Pipeline Notification

Well(s) will be connected to a production facility after flowback operations are complete, if gas transporter system is in place. The gas produced from production facility is dedicated to Western and will be connected to Western low/high pressure gathering system located in FDDY County, New Mexico. It will require 3,400' of pipeline to connect the facility to low/high pressure gathering system. Mewbourne Oil Company provides (periodically) to Western a drilling, completion and estimated first production date for wells that are scheduled to be drilled in the foreseeable future. In addition, Mewbourne Oil Company and Western have periodic conference calls to discuss changes to drilling and completion schedules. Gas from these wells will be processed at Western Processing Plant located in Sec. 36, Blk. 58 T1S, Culberson County, Texas. The actual flow of the gas will be based on compression operating parameters and gathering system pressures.

Flowback Strategy

After the fracture treatment/completion operations, well(s) will be produced to temporary production tanks and gas will be flared or vented. During flowback, the fluids and sand content will be monitored. When the produced fluids contain minimal sand, the wells will be turned to production facilities. Gas sales should start as soon as the wells start flowing through the production facilities, unless there are operational issues on Western system at that time. Based on current information, it is Operator's belief the system can take this gas upon completion of the well(s).

Safety requirements during cleanout operations from the use of underbalanced air cleanout systems may necessitate that sand and non-pipeline quality gas be vented and/or flared rather than sold on a temporary basis.

Alternatives to Reduce Flaring

Below are alternatives considered from a conceptual standpoint to reduce the amount of gas flared.

- Power Generation – On lease
 - Only a portion of gas is consumed operating the generator, remainder of gas will be flared
- Compressed Natural Gas – On lease
 - Gas flared would be minimal, but might be uneconomical to operate when gas volume declines
- NGL Removal – On lease
 - Plants are expensive, residue gas is still flared, and uneconomical to operate when gas volume declines

Intent ☒ As Drilled ☐

HOBBS OCD
DEC 10 2018
RECEIVED

API #
30-025-45401

Operator Name: Mewbourne Oil Co.	Property Name: Dolly Varden 25/24 B2FC St Com	Well Number 1H
-------------------------------------	--	-------------------

Kick Off Point (KOP)

UL F	Section 25	Township 21S	Range 34E	Lot	Feet 2633	From N/S N	Feet 1980	From E/W W	County Lea
Latitude 32.4500220					Longitude -103.4256680			NAD 83	

First Take Point (FTP)

UL F	Section 25	Township 21S	Range 34E	Lot	Feet 2543	From N/S N	Feet 1980	From E/W W	County Lea
Latitude 32.4502941					Longitude -103.4256679			NAD 83	

Last Take Point (LTP)

UL C	Section 24	Township 21S	Range 34E	Lot	Feet 100	From N/S N	Feet 1980	From E/W W	County Lea
Latitude 32.4714999					Longitude -103.4256633			NAD 83	

Is this well the defining well for the Horizontal Spacing Unit? ☒

Is this well an infill well? ☐

If infill is yes please provide API if available, Operator Name and well number for Defining well for Horizontal Spacing Unit.

API #		
Operator Name:	Property Name:	Well Number

KZ 06/29/2018