

District I  
1625 N. French Dr., Hobbs, NM 88240  
Phone: (575) 393-6161 Fax: (575) 393-0720  
District II  
811 S. First St., Artesia, NM 88210  
Phone: (575) 748-1283 Fax: (575) 748-9720  
District III  
1000 Rio Brazos Road, Aztec, NM 87410  
Phone: (505) 334-6178 Fax: (505) 334-6170  
District IV  
1220 S. St. Francis Dr., Santa Fe, NM 87505  
Phone: (505) 476-3460 Fax: (505) 476-3462

State of New Mexico  
Energy, Minerals & Natural Resources  
Department  
OIL CONSERVATION DIVISION  
1220 South St. Francis Dr.  
Santa Fe, NM 87505

FORM C-102  
Revised August 1, 2011  
Submit one copy to appropriate  
District Office  
☐ AMENDED REPORT

WELL LOCATION AND ACREAGE DEDICATION PLAT

<sup>1</sup> API Number 30-025-44098	<sup>2</sup> Pool Code 98097	<sup>3</sup> Pool Name WC-025 G-09 S263327G; Upper Wolfcamp
<sup>4</sup> Property Code 319664	<sup>5</sup> Property Name DOGWOOD 23 FED COM	<sup>6</sup> Well Number #707H
<sup>7</sup> GRID No. 7377	<sup>8</sup> Operator Name EOG RESOURCES, INC.	<sup>9</sup> Elevation 3304'

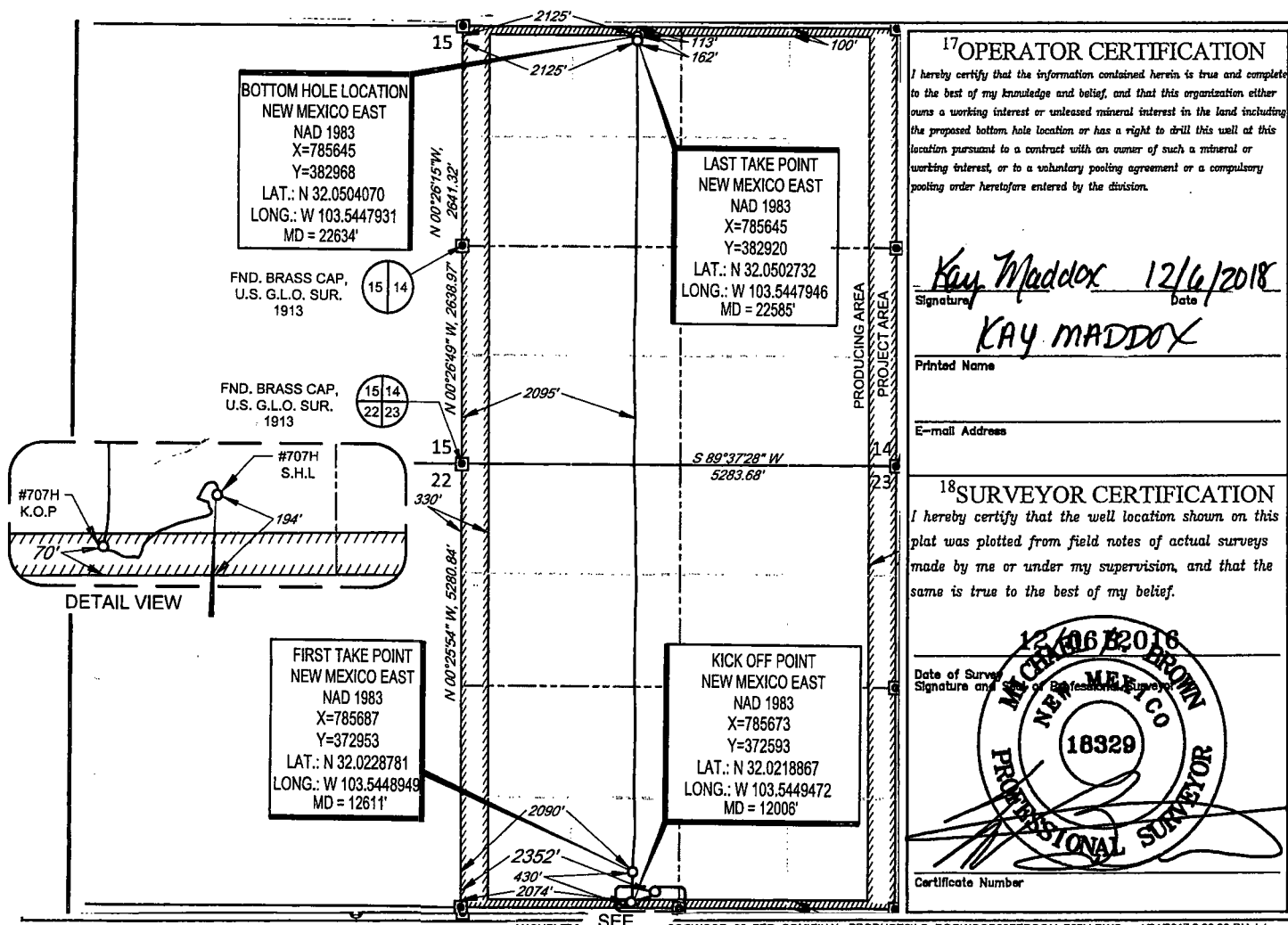
<sup>10</sup>Surface Location

UL or lot no. N	Section 23	Township 26-S	Range 33-E	Lot Idn -	Feet from the 194'	North/South line SOUTH	Feet from the 2352'	East/West line WEST	County LEA
--------------------	---------------	------------------	---------------	--------------	-----------------------	---------------------------	------------------------	------------------------	---------------

UL or lot no. C	Section 14	Township 26-S	Range 33-E	Lot Idn -	Feet from the 113'	North/South line NORTH	Feet from the 2125'	East/West line WEST	County LEA
--------------------	---------------	------------------	---------------	--------------	-----------------------	---------------------------	------------------------	------------------------	---------------

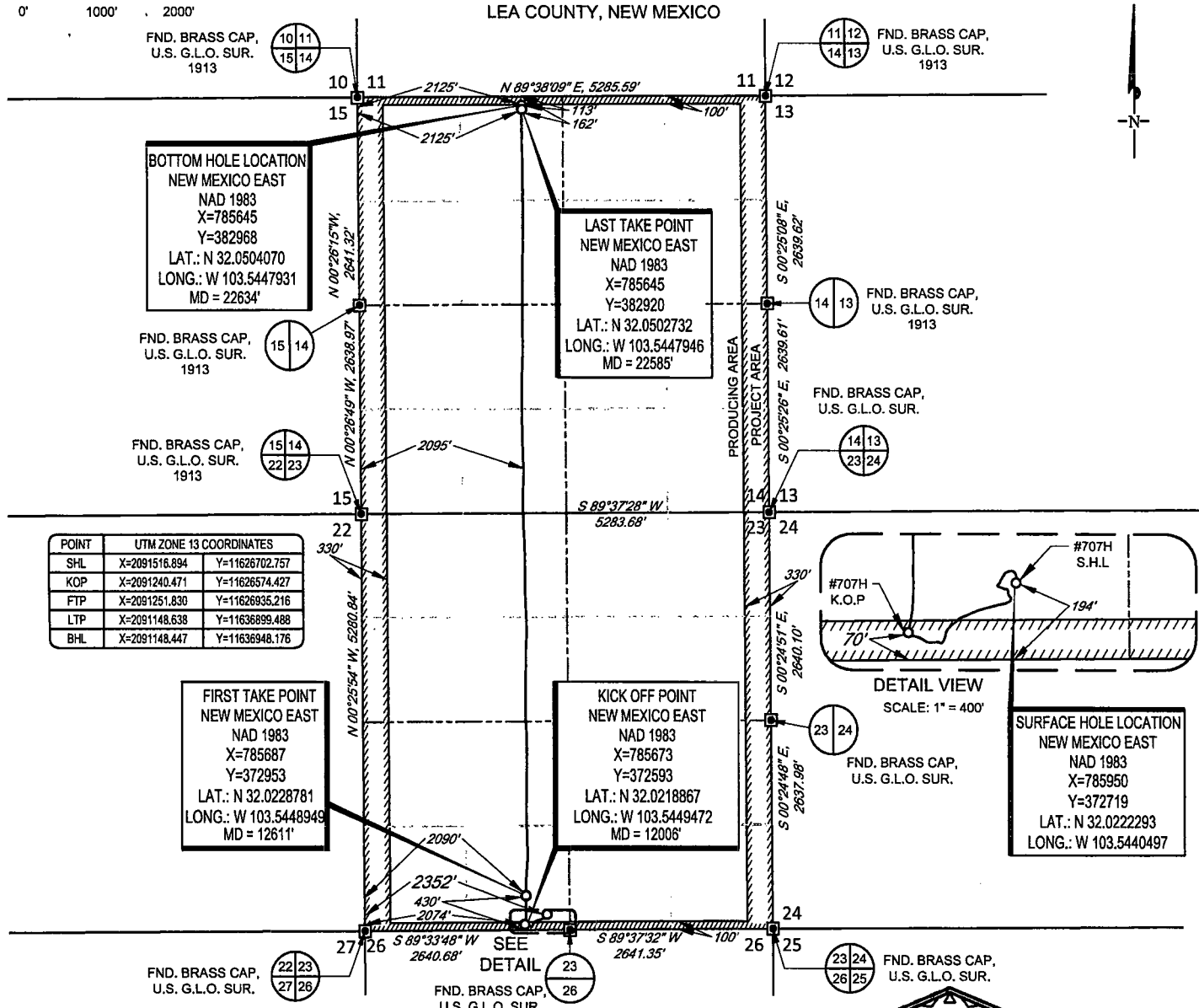
<sup>12</sup> Dedicated Acres 1280	<sup>13</sup> Joint or Infill	<sup>14</sup> Consolidation Code	<sup>15</sup> Order No.
---------------------------------------	-------------------------------	----------------------------------	-------------------------

No allowable will be assigned to this completion until all interests have been consolidated or a non-standard unit has been approved by the division.

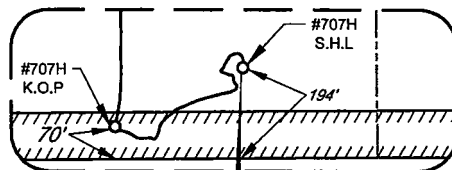


SCALE: 1" = 2000'

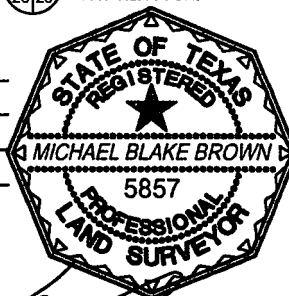
SECTION 23, TOWNSHIP 26-S, RANGE 33-E, N.M.P.M.  
LEA COUNTY, NEW MEXICO



POINT	UTM ZONE 13 COORDINATES
SHL	X=2091516.894 Y=11626702.757
KOP	X=2091240.471 Y=11626574.427
FTP	X=2091251.830 Y=11626935.216
LTP	X=2091148.638 Y=11636899.488
BHL	X=2091148.447 Y=11636948.176



LEASE NAME & WELL NO.: DOGWOOD 23 FED COM #707H  
SECTION 23 TWP 26-S RGE 33-E SURVEY N.M.P.M.  
COUNTY LEA STATE NM ELEVATION 3304'  
DESCRIPTION 194' FSL & 2352' FWL



**TOPOGRAPHIC**  
LOYALTY INNOVATION LEGACY

1400 EVERMAN PARKWAY, Ste. 146 • FT. WORTH, TEXAS 76140  
TELEPHONE: (817) 744-7512 • FAX (817) 744-7554  
2903 NORTH BIG SPRING • MIDLAND, TEXAS 79705  
TELEPHONE: (432) 682-1653 OR (800) 767-1653 • FAX (432) 682-1743  
WWW.TOPOGRAPHIC.COM

Michael Blake Brown, P.S. No. 18329  
DECEMBER 07, 2018

**EOG resources, Inc.**

DOGWOOD 23 FED COM #707H AS-COMPLETED	REVISION:	NOTES: 1. ORIGINAL DOCUMENT SIZE: 8.5" X 11" 2. ALL BEARINGS, DISTANCES, AND COORDINATE VALUES CONTAINED HEREIN ARE GRID BASED UPON THE NEW MEXICO COORDINATE SYSTEM OF 1983, EAST ZONE, U.S. SURVEY FEET. 3. THIS WELL LOCATION SHOWN HEREON HAS BEEN SURVEYED ON THE GROUND UNDER MY SUPERVISION AND PREPARED ACCORDING TO THE EVIDENCE FOUND AT THE TIME OF SURVEY, AND DATA PROVIDED BY EOG RESOURCES, INC. THIS CERTIFICATION IS MADE AND LIMITED TO THOSE PERSONS OR ENTITIES SHOWN ON THE FACE OF THIS PLAT AND IS NON-TRANSFERABLE. THIS SURVEY IS CERTIFIED FOR THIS TRANSACTION ONLY.
DATE: 12/07/18		
FILE: AD_DOGWOOD_23_FED_COM_707H		
DRAWN BY: JLS		
SHEET: 1 OF 1		