

District I
1625 N. French Dr., Hobbs, NM 88240
Phone: (575) 393-6161 Fax: (575) 393-0720
District II
811 S. First St., Artesia, NM 88210
Phone: (575) 748-1283 Fax: (575) 748-9720
District III
1000 Rio Brazos Road, Aztec, NM 87410
Phone: (505) 334-6178 Fax: (505) 334-6170
District IV
1220 S. St. Francis Dr., Santa Fe, NM 87505
Phone: (505) 476-3460 Fax: (505) 476-3462

State of New Mexico
Energy, Minerals & Natural Resources Department
OIL CONSERVATION DIVISION
1220 South St. Francis Dr.
Santa Fe, NM 87505

Form C-102
Revised August 1, 2011
Submit one copy to appropriate
District Office

DEC 12 2018

☐ AMENDED REPORT

F/P

WELL LOCATION AND ACREAGE DEDICATION

¹ API Number 30-025-48405	² Pool Code 96434	³ Pool Name RED HILLS; ARNE SPRING, NORTH
⁴ Property Code 318028	⁵ Property Name SHEBA FEDERAL COM	⁶ Well Number 507H
⁷ OGRID No. 372165	⁸ Operator Name CENTENNIAL RESOURCE PRODUCTION, LLC	⁹ Elevation 3495.8'

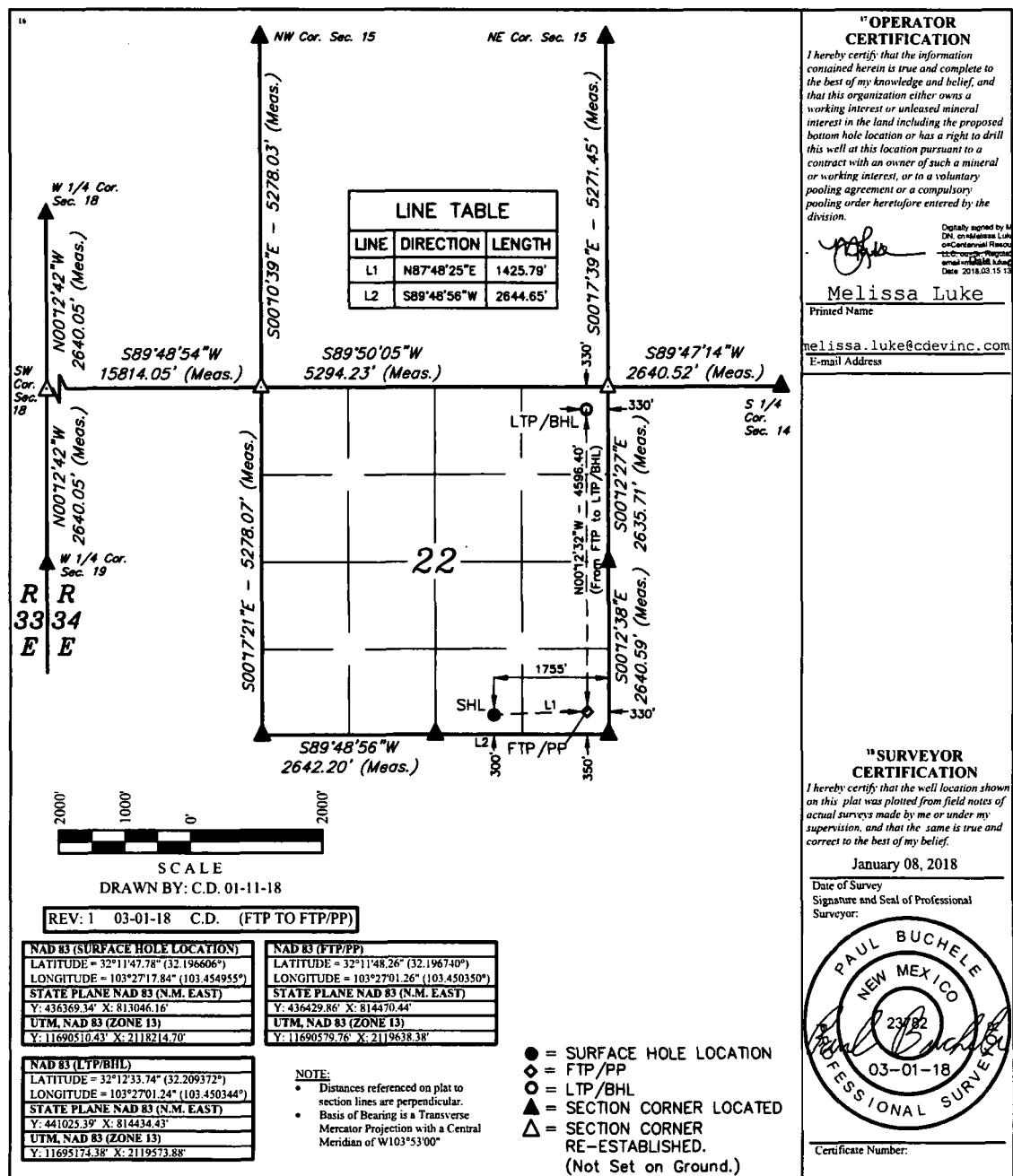
"Surface Location

UL or lot no.	Section	Township	Range	Lot Ida	Feet from the	North/South line	Feet from the	East/West line	County
O	22	24S	34E		300	SOUTH	1755	EAST	LEA

"Bottom Hole Location If Different From Surface

UL or lot no.	Section	Township	Range	Lot Ida	Feet from the	North/South line	Feet from the	East/West line	County
A	22	24S	34E		330	NORTH	330	EAST	LEA
¹² Dedicated Acres 160		¹³ Joint or Infill		¹⁴ Consolidation Code		¹⁵ Order No.			

No allowable will be assigned to this completion until all interests have been consolidated or a non-standard unit has been approved by the division.



State of New Mexico
Energy, Minerals & Natural Resources Department
OIL CONSERVATION DIVISION
1220 South St. Francis Dr.
Santa Fe, NM 87505

District I
1625 N. French Dr., Hobbes, NM 88240
Phone: (575) 393-6161 Fax: (575) 393-0720
District II
811 S. First St., Artesia, NM 88210
Phone: (575) 748-1283 Fax: (575) 748-9720
District III
1000 Rio Brazos Road, Aztec, NM 87410
Phone: (505) 334-6178 Fax: (505) 334-6170
District IV
1220 S. St. Francis Dr., Santa Fe, NM 87505
Phone: (505) 476-3460 Fax: (505) 476-3462

Form C-102
Revised August 1, 2011
Submit one copy to appropriate
District Office

☐ AMENDED REPORT

1 API Number		2 Pool Code		3 Pool Name	
4 Property Code		5 Property Name SHEBA FEDERAL COM			6 Well Number 507H
7 OGRID No.		8 Operator Name CENTENNIAL RESOURCE PRODUCTION, LLC			9 Elevation 3495.8'

UL or lot no. O	Section 22	Township 24S	Range 34E	Lot Idn	Feet from the 300	North/South line SOUTH	Feet from the 1755	East/West line EAST	County LEA
--------------------	---------------	-----------------	--------------	---------	----------------------	---------------------------	-----------------------	------------------------	---------------

UL or lot no. A	Section 22	Township 24S	Range 34E	Lot Idn	Feet from the 330	North/South line NORTH	Feet from the 330	East/West line EAST	County LEA
¹² Dedicated Acres 160		¹³ Joint or Infill		¹⁴ Consolidation Code		¹⁵ Order No.			

1" OPERATOR CERTIFICATION

I hereby certify that the information contained herein is true and complete to the best of my knowledge and belief, and that this organization either owns a working interest or unleased mineral interest in the land including the proposed bottom hole location or has a right to drill this well at this location pursuant to a contract with an owner of such a mineral or working interest, or to a voluntary pooling agreement or a compulsory pooling order heretofore entered by the division.

Digitally signed by Melissa Luke
DN: cn=Melissa Luke, o=Central New Mexico, email=melissa.luke@cdvenc.com, c=US
Date: 2018.03.15 15:18:00

22

LINE TABLE

LINE	DIRECTION	LENGTH
L1	N87°48'25"E	1425.79'
L2	S89°48'56"W	2644.65'

SCALE

DRAWN BY: C.D. 01-11-18

REV: 1 03-01-18 C.D. (FTP to FTP/PP)

NAD 83 (SURFACE HOLE LOCATION)

LATITUDE = 32°11'47.78" (32.196606°)
 LONGITUDE = 103°27'17.84" (103.454955°)
 STATE PLANE NAD 83 (N.M. EAST)
 Y: 436369.34' X: 813046.16'
 UTM, NAD 83 (ZONE 13)
 Y: 11690510.43' X: 2118214.70'

NAD 83 (FTP/PP)

LATITUDE = 32°11'48.26" (32.196740°)
 LONGITUDE = 103°27'01.26" (103.450350°)
 STATE PLANE NAD 83 (N.M. EAST)
 Y: 436429.86' X: 814470.44'
 UTM, NAD 83 (ZONE 13)
 Y: 11690579.76' X: 2119638.38'

NAD 83 (LTP/BHL)

LATITUDE = 32°12'33.74" (32.209372°)
 LONGITUDE = 103°27'01.24" (103.450344°)
 STATE PLANE NAD 83 (N.M. EAST)
 Y: 441025.39' X: 814434.43'
 UTM, NAD 83 (ZONE 13)
 Y: 11695174.38' X: 2119573.88'

NOTE:

- Distances referenced on plat to section lines are perpendicular.
- Basis of Bearing is a Transverse Mercator Projection with a Central Meridian of W103°53'00"

LEGEND:

- = SURFACE HOLE LOCATION
- = FTP/PP
- ◐ = LTP/BHL
- ▲ = SECTION CORNER LOCATED
- △ = SECTION CORNER RE-ESTABLISHED.

(Not Set on Ground.)

Melissa Luke
Printed Name
melissa.luke@cdvenc.com
E-mail Address

"SURVEYOR CERTIFICATION"

I hereby certify that the well location shown on this plat was plotted from field notes of actual surveys made by me or under my supervision, and that the same is true and correct to the best of my belief.

January 08, 2018

Date of Survey
Signature and Seal of Professional Surveyor:

PAUL BUCHELE
NEW MEXICO
2382
03-01-18
PROFESSIONAL SURVEYOR

Certificate Number: