

District I  
1625 N. French Dr., Hobbs, NM 88240  
Phone: (575) 393-6161 Fax: (575) 393-0720  
District II  
811 S. First St., Artesia, NM 88210  
Phone: (575) 748-1283 Fax: (575) 748-9720  
District III  
1000 Rio Brazos Road, Aztec, NM  
Phone: (505) 334-6178 Fax: (505) 334-6178  
District IV  
1220 S. St. Francis Dr., Santa Fe, NM 87505  
Phone: (505) 476-3460 Fax: (505) 476-3462

State of New Mexico  
Energy, Minerals & Natural Resources  
Department  
CONSERVATION DIVISION  
1220 South St. Francis Dr.  
Santa Fe, NM 87505

FORM C-102  
Revised August 1, 2011  
Submit one copy to appropriate  
District Office

☒ AMENDED REPORT

### WELL LOCATION AND ACREAGE DEDICATION PLAT

<sup>1</sup> API Number <b>30-025-44471</b>	<sup>2</sup> Pool Code	<sup>3</sup> Pool Name
<sup>4</sup> Property Code	<sup>5</sup> Property Name <b>REDBUD STATE COM 25 36 32</b>	<sup>6</sup> Well Number <b>115H</b>
<sup>7</sup> GRID No.	<sup>8</sup> Operator Name <b>AMEREDEV OPERATING, LLC.</b>	<sup>9</sup> Elevation <b>3005'</b>

#### <sup>10</sup>Surface Location

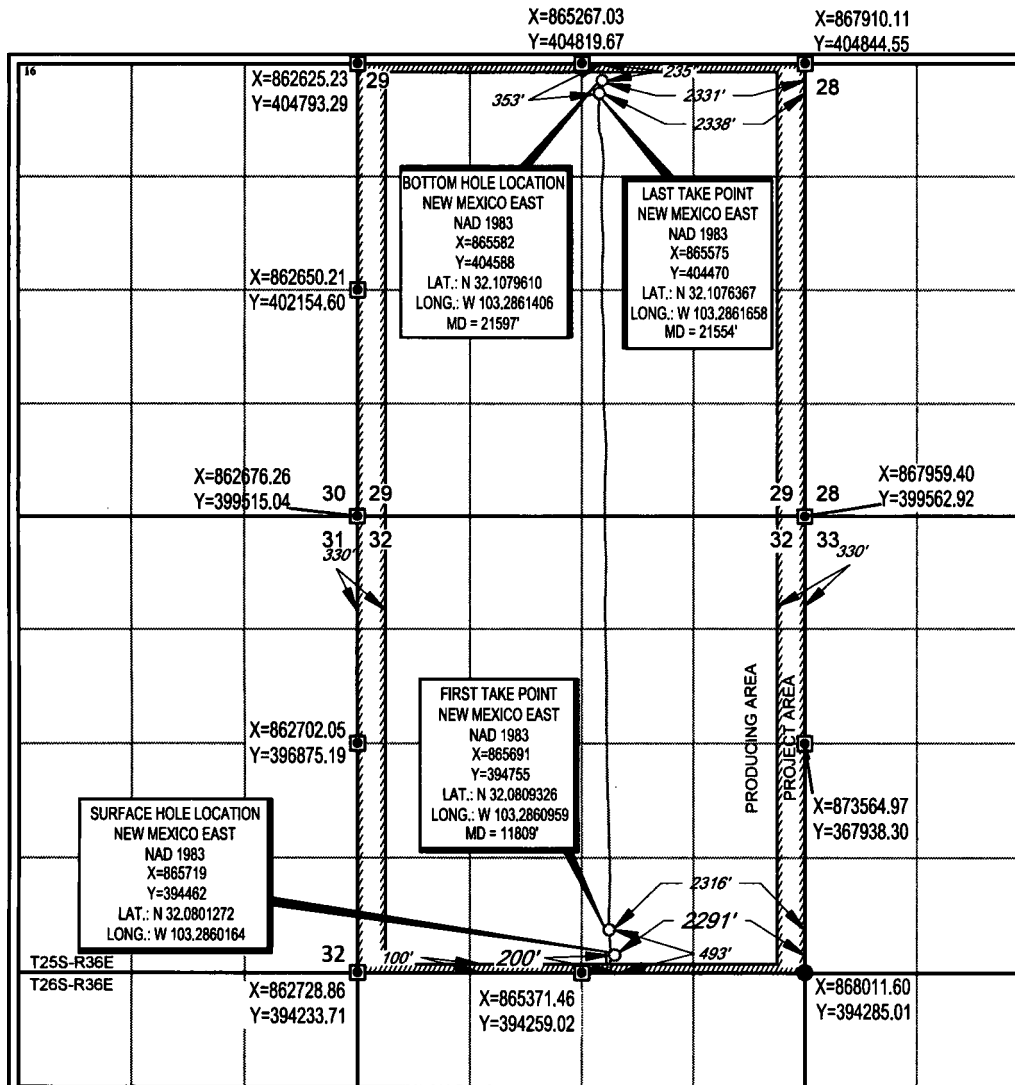
UL or lot no.	Section	Township	Range	Lot Idn	Feet from the	North/South line	Feet from the	East/West line	County
<b>0</b>	<b>32</b>	<b>25-S</b>	<b>36-E</b>	<b>-</b>	<b>200'</b>	<b>SOUTH</b>	<b>2291'</b>	<b>EAST</b>	<b>LEA</b>

#### <sup>11</sup>Bottom Hole Location If Different From Surface

UL or lot no.	Section	Township	Range	Lot Idn	Feet from the	North/South line	Feet from the	East/West line	County
<b>B</b>	<b>29</b>	<b>25-S</b>	<b>36-E</b>	<b>-</b>	<b>235'</b>	<b>NORTH</b>	<b>2331'</b>	<b>EAST</b>	<b>LEA</b>

<sup>12</sup> Dedicated Acres	<sup>13</sup> Joint or Infill	<sup>14</sup> Consolidation Code	<sup>15</sup> Order No.
-------------------------------	-------------------------------	----------------------------------	-------------------------

No allowable will be assigned to this completion until all interests have been consolidated or a non-standard unit has been approved by the division.



#### <sup>17</sup>OPERATOR CERTIFICATION

I hereby certify that the information contained herein is true and complete to the best of my knowledge and belief, and that this organization either owns a working interest or unleased mineral interest in the land including the proposed bottom hole location or has a right to drill this well at this location pursuant to a contract with an owner of such a mineral or working interest, or to a voluntary pooling agreement or a compulsory pooling order heretofore entered by the division.

Signature \_\_\_\_\_ Date \_\_\_\_\_

Printed Name \_\_\_\_\_

E-mail Address \_\_\_\_\_

#### <sup>18</sup>SURVEYOR CERTIFICATION

I hereby certify that the well location shown on this plat was plotted from field notes of actual surveys made by me or under my supervision, and that the same is true to the best of my belief.

Date of Survey \_\_\_\_\_ Signature \_\_\_\_\_

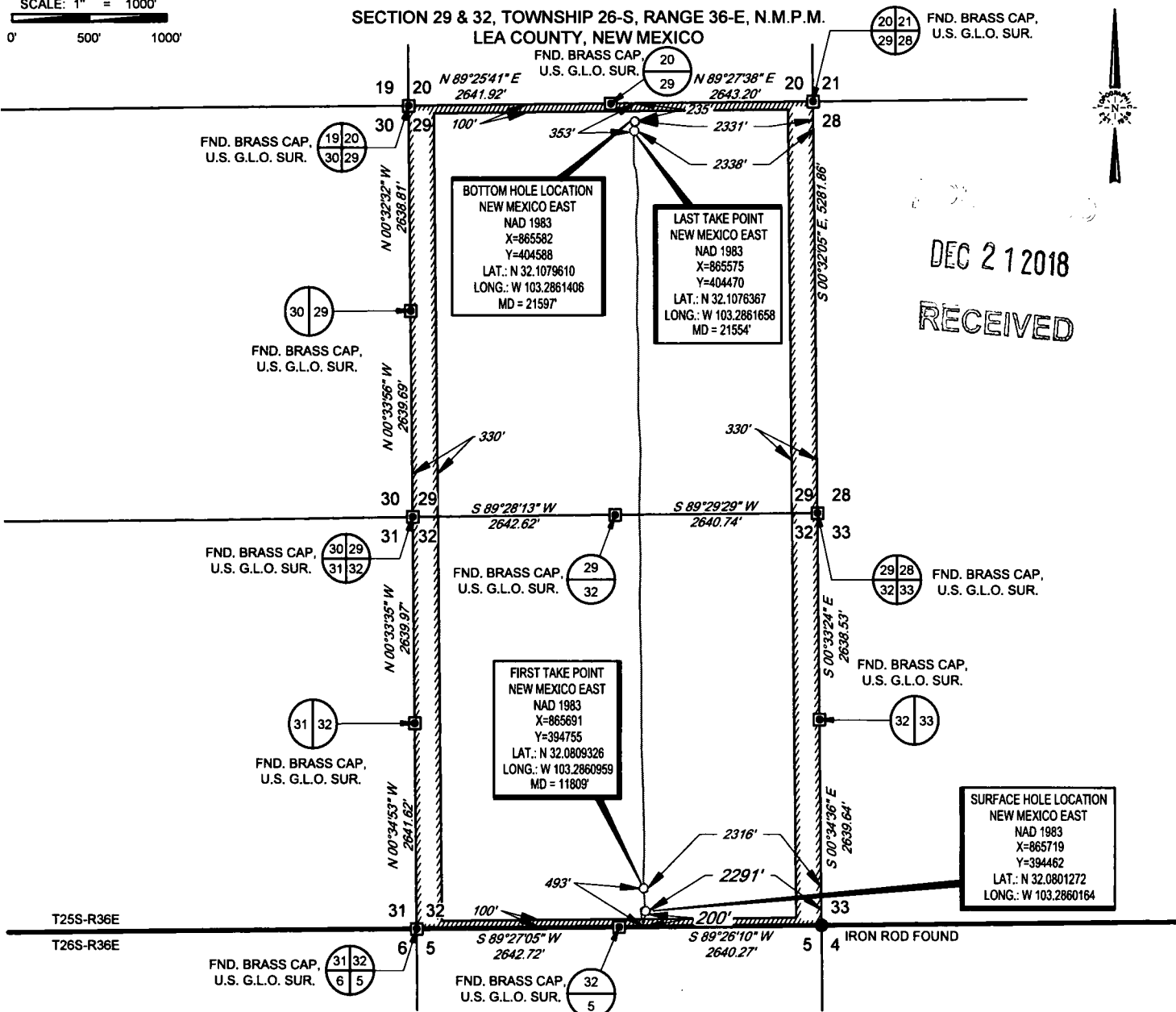
Professional Surveyor  
18329  
Certificate Number \_\_\_\_\_

SCALE: 1" = 1000'

0' 500' 1000'

SECTION 29 & 32, TOWNSHIP 26-S, RANGE 36-E, N.M.P.M.  
LEA COUNTY, NEW MEXICO

FND. BRASS CAP.  
U.S. G.L.O. SUR.

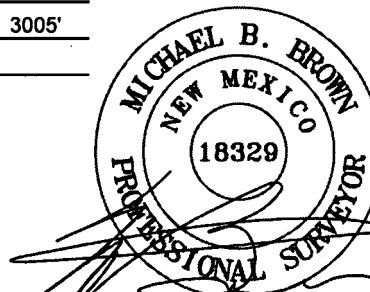


DEC 21 2018  
RECEIVED

LEASE NAME & WELL NO.: REDBUD STATE COM 25 36 32 115H  
SECTION 32 TWP 25-S RGE 36-E SURVEY N.M.P.M.  
COUNTY LEA STATE NM ELEVATION 3005'  
DESCRIPTION 200' FSL & 2291' FEL

**AMEREDEV**  
AMEREDEV OPERATING, LLC

**TOPOGRAPHIC**  
LOYALTY INNOVATION LEGACY  
1400 EVERMAN PARKWAY, Ste. 146 • FT. WORTH, TEXAS 76140  
TELEPHONE: (817) 744-7512 • FAX (817) 744-7554  
TEXAS FIRM REGISTRATION NO. 10042504  
WWW.TOPOGRAPHIC.COM



Michael Blake Brown, P.S. No. 18329  
DECEMBER 20, 2018

REDBUD STATE COM  
25 36 32 115H  
AS-COMPLETED

REVISION:

NOTES:

1. ORIGINAL DOCUMENT SIZE: 8.5" X 11"
2. ALL BEARINGS, DISTANCES, AND COORDINATE VALUES CONTAINED HEREIN ARE GRID BASED UPON THE NEW MEXICO COORDINATE SYSTEM OF 1983, EAST ZONE, U.S. SURVEY FEET, NORTH AMERICAN DATUM 1983.
3. THIS WELL LOCATION SHOWN HEREON HAS BEEN SURVEYED ON THE GROUND UNDER MY SUPERVISION AND PREPARED ACCORDING TO THE EVIDENCE FOUND AT THE TIME OF SURVEY, AND DATA PROVIDED BY AMEREDEV OPERATING, LLC. THIS CERTIFICATION IS MADE AND LIMITED TO THOSE PERSONS OR ENTITIES SHOWN ON THE FACE OF THIS PLAT AND IS NON-TRANSFERABLE. THIS SURVEY IS CERTIFIED FOR THIS TRANSACTION ONLY.

DATE: 12/20/18

FILE: AD\_REDBUD\_STATE\_COM\_25\_36\_32\_115H

DRAWN BY: A.M.D.

SHEET: 1 OF 1