

District I
1625 N. French Dr., Hobbs, NM 88240
Phone: (575) 393-6161 Fax: (575) 393-0720
District II
811 S. First St., Artesia, NM 88210
Phone: (575) 748-1283 Fax: (575) 748-9720
District III
1000 Rio Brazos Road, Aztec, NM 87410
Phone: (505) 334-6178 Fax: (505) 334-6170
District IV
1220 S. St. Francis Dr., Santa Fe, NM 87505
Phone: (505) 476-3460 Fax: (505) 476-3462

State of New Mexico
Energy, Minerals & Natural Resources Department
OIL CONSERVATION DIVISION
1220 South St. Francis Dr.
Santa Fe, NM 87505

Form C-102
Revised August 1, 2011
Submit one copy to appropriate
District Office

NOTED
JAN 03 2019
RECEIVED

AMENDED REPORT

WELL LOCATION AND ACREAGE DEDICATION PLAT

¹ API Number 30-025- 45456	² Pool Code 22900	³ Pool Name EUNICE; BLI-TU-DR, NORTH
⁴ Property Code 22503	⁵ Property Name NORTHEAST DRINKARD UNIT	
⁷ OGRID NO. 873	⁸ Operator Name APACHE CORPORATION	⁶ Well Number 649W
		⁹ Elevation 3454'

¹⁰ Surface Location

UL or lot no.	Section	Township	Range	Lot Idn	Feet from the	North/South line	Feet From the	East/West line	County
D	15	21S	37E		870	NORTH	800	WEST	LEA

¹¹ Bottom Hole Location If Different From Surface

UL or lot no.	Section	Township	Range	Lot Idn	Feet from the	North/South line	Feet from the	East/West line	County

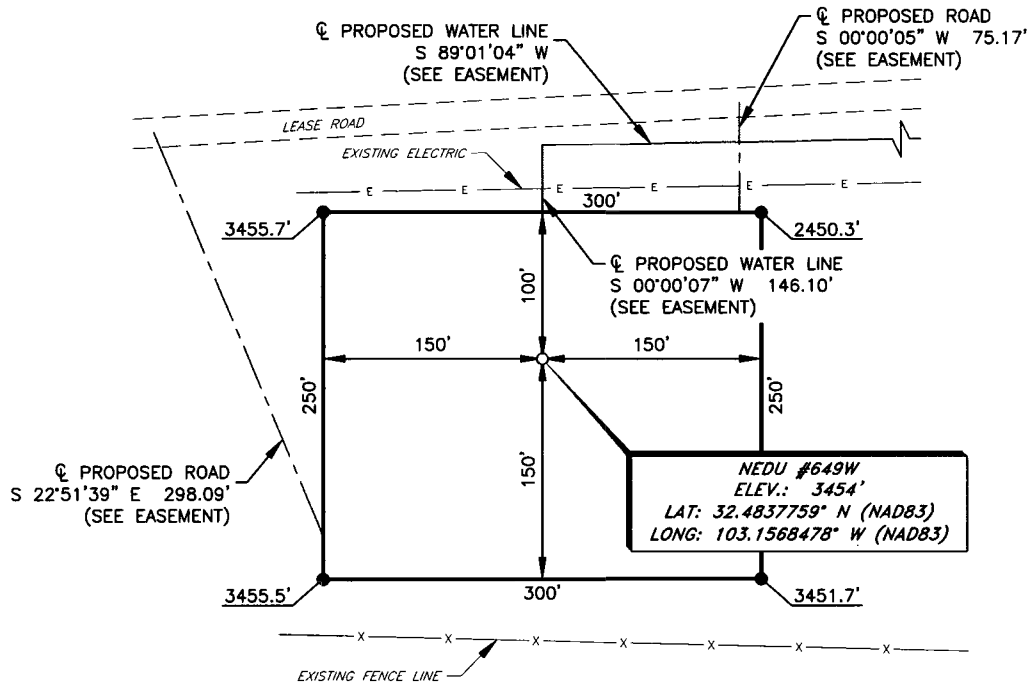
¹² Dedicated Acres 40	¹³ Joint or Infill	¹⁴ Consolidation Code	¹⁵ Order No.
--	-------------------------------	----------------------------------	-------------------------

No allowable will be assigned to this completion until all interest have been consolidated or a non-standard unit has been approved by the division.

	<p>17 OPERATOR CERTIFICATION I hereby certify that the information contained herein is true and complete to the best of my knowledge and belief, and that this organization either owns a working interest or unleased mineral interest in the land including the proposed bottom hole location or has a right to drill this well at this location pursuant to a contract with an owner of such a mineral or working interest, or to a voluntary pooling agreement or a compulsory pooling order heretofore entered by the division.</p> <p>Sorina L. Flores 12/17/2018 Signature Date Sorina L. Flores Printed Name sorina.flores@apachecorp.com E-mail Address</p>
	<p>18 SURVEYOR CERTIFICATION I hereby certify that the well location shown on this plat was plotted from field notes of actual surveys made by me or under my supervision, and that the same is true and correct to the best of my belief.</p> <p>12-05-2018 Date of Survey Signature and Seal of Professional Surveyor 10034 Certificate Number</p>
	<p>GEODETIC DATA NAD 83 GRID - NM EAST SURFACE LOCATION (S.L.) N 541729.0 - E 904117.0 LAT: 32.4837759° N LONG: 103.1568478° W</p> <p>GEODETIC DATA NAD 27 GRID - NM EAST SURFACE LOCATION (S.L.) N 541669.1 - E 862932.8 LAT: 32.4836553° N LONG: 103.1563775° W</p>
	<p>CORNER DATA NAD 83 GRID - NM EAST A: FOUND SPIKE NAIL N 537309.1 - E 903369.7 B: FOUND BRASS W/ ALUM. CAP N 542588.4 - E 903306.6 C: FOUND NAIL 100D N 542657.9 - E 908581.5 D: FOUND BRASS CAP "1911" N 540019.3 - E 908610.8 E: FOUND 3" IRON PIPE N 537376.9 - E 908643.7 F: FOUND BRASS CAP "1911" N 537342.1 - E 906006.4</p>

Job No.: LS18091081

APACHE CORPORATION
NEDU #649W
(870' FNL & 800' FWL)
SECTION 15, T21S, R37E
N. M. P. M., LEA COUNTY, NEW MEXICO



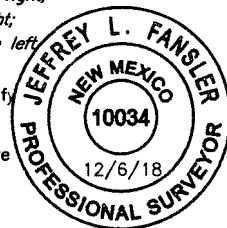
NEDU #649W
ELEV.: 3454'
LAT: 32.4837759° N (NAD83)
LONG: 103.1568478° W (NAD83)

DIRECTIONS TO LOCATION

From the intersection of State Hwy 248 and E-49 (Hill Rd.),
 Go North on State Hwy 248 approx. 730 feet to a lease road on the right;
 Turn right and go East approx. 656 feet to proposed road on the right;
 Turn right and go South approx. 300 feet to proposed location on the left.

I, Jeffrey L. Fansler, a N. M. Professional Surveyor, hereby certify that I prepared this plat from an actual survey made on the ground under my direct supervision, said survey and plat meet the Min. Stds. for Land Surveying in the State of N. M. and are true and correct to the best of my knowledge and belief.

Jeffrey L. Fansler
 Jeffrey L. Fansler NM PS 10034



N

SCALE: 1" = 100'

0 50' 100'

BEARINGS ARE GRID NAD 83
 NM EAST
 DISTANCES ARE HORIZ. GROUND.

Copyright 2018 - All Rights Reserved

DATE: 12-05-2018		
NO.	REVISION	DATE
1		
2		
3		
4		

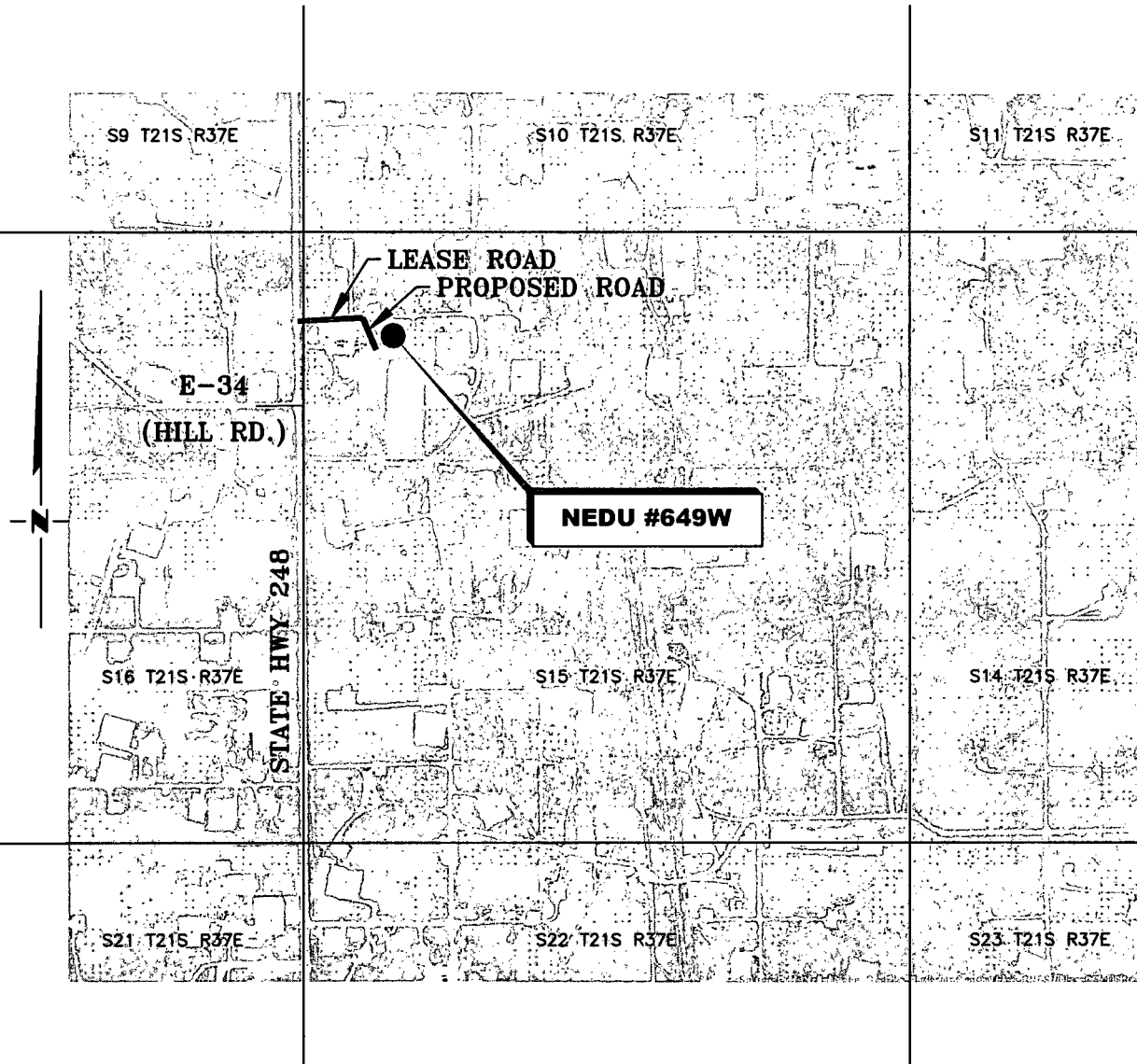
RRC

SURVEYING, LLC
 701 S. CECIL ST., HOBBS, NM 88240 (575) 964-8200

SCALE: 1" = 1000'
SURVEYED BY: AB/RU
DRAWN BY: AAC
APPROVED BY: JLF
JOB NO.: LS18091081
SHEET: 649W PAD

VICINITY MAP

NOT TO SCALE



*SECTION 15, TWP. 21 SOUTH, RGE. 37 EAST,
N. M. P. M., LEA COUNTY, NEW MEXICO*

OPERATOR: Apache Corporation
LEASE: Nedu
WELL NO.: 649W

LOCATION: 870' FNL & 800' FWL
ELEVATION: 3454'

Copyright 2018 - All Rights Reserved

DATE: 12-05-2018

NO.	REVISION	DATE
1		
2		
3		
4		

RRC

SURVEYING, LLC

701 S. CECIL ST., HOBBS, NM 88240 (575) 964-8200

SCALE: N / A

SURVEYED BY: AB/RU

DRAWN BY: AAC

APPROVED BY: JLF

JOB NO.: LS18091081

SHEET: 649W VM