

Submit 1 Copy To Appropriate District Office
District I - (575) 393-6161
1625 N. French Dr., Hobbs, NM 88240
District II - (575) 748-1283
811 S. First St., Artesia, NM 88210
District III - (505) 334-6178
1000 Rio Brazos Rd., Aztec, NM 87410
District IV - (505) 476-3460
1220 S. St. Francis Dr., Santa Fe, NM 87505

State of New Mexico
Energy, Minerals and Natural Resources

Form C-103
Revised July 18, 2013

OIL CONSERVATION DIVISION
1220 South St. Francis Dr.
Santa Fe, NM 87505

WELL API NO. 30-025-45129
5. Indicate Type of Lease STATE <input type="checkbox"/> FEE <input checked="" type="checkbox"/>
6. State Oil & Gas Lease No. 322272
7. Lease Name or Unit Agreement Name Saul Goodman Fee
8. Well Number 2H
9. OGRID Number 371682
10. Pool name or Wildcat Bronco San Andres South

SUNDRY NOTICES AND REPORTS ON WELLS
(DO NOT USE THIS FORM FOR PROPOSALS TO DRILL OR TO DEEPEN OR PLUG BACK TO A DIFFERENT RESERVOIR. USE "APPLICATION FOR PERMIT" (FORM C-101) FOR SUCH PROPOSALS.)

1. Type of Well: Oil Well ☒ Gas Well ☐ Other

2. Name of Operator Steward Energy II LLC

3. Address of Operator 2600 Dallas Parkway Suite 400 Frisco Tx 75034

4. Well Location

Unit Letter B: 214 feet from the N line and 250 feet from the E line

Section 2 Township 14 s Range 38 E NMPM County Lea

11. Elevation (Show whether DR, RKB, RT, GR, etc.)
3783 GL

12. Check Appropriate Box to Indicate Nature of Notice, Report or Other Data

NOTICE OF INTENTION TO:

PERFORM REMEDIAL WORK ☐ PLUG AND ABANDON ☐
TEMPORARILY ABANDON ☐ CHANGE PLANS ☐
PULL OR ALTER CASING ☐ MULTIPLE COMPL ☐
DOWNHOLE COMMINGLE ☐
CLOSED-LOOP SYSTEM ☐
OTHER: ☐

SUBSEQUENT REPORT OF:

REMEDIAL WORK ☐ ALTERING CASING ☐
COMMENCE DRILLING OPNS. ☐ P AND A ☐
CASING/CEMENT JOB ☒
OTHER: Final Completion ☒

13. Describe proposed or completed operations. (Clearly state all pertinent details, and give pertinent dates, including estimated date of starting any proposed work). SEE RULE 19.15.7.14 NMAC. For Multiple Completions: Attach wellbore diagram of proposed completion or recompletion.

Saul Goodman 2H final drilling/completion report attached with 5.5" casing test results.
Amended C-102 (As built Plat).
Well Bore Diagram.

Spud Date: 10/09/2018

Rig Release Date: 10/24/2018

I hereby certify that the information above is true and complete to the best of my knowledge and belief.

SIGNATURE W Price TITLE Consultant for SEII DATE Jan 14, 2019

Type or print name wayne price E-mail address: wayneprice@q.com PHONE: 505-775-2809
For State Use Only

APPROVED BY: [Signature] TITLE Petroleum Engineer DATE 01/15/19
Conditions of Approval (if any):

Drilling Report: Steward Saul Goodman API # 30-025-45129

18-10-12; Tag cement shoe 2435' and drill out cement.

18-10-13; Resume drilling 8.75" hole, rotate/slide from 2435' to 4137'.

18-10-14; Rotate/slide to KOP. Start Curve at 4697', continue to build.

18-10-15; Slide/Rotate build curve, starting tangent f/ 5359' - 5559'. Land Curve at 6111'. Continue drilling lateral, slide and rotate f/ 6111' - 6959', (1381' @ 58.7 ft/hr).

18-10-16; Slide and rotate f/ 6959' - 7996', (1037' @ 74 ft/hr), trip for lateral assembly. 18-10-17; Continue drill Lateral Trip in hole, ream to bottom, slide and rotate f/ 7996' - 9270', (1274' @ 64.5 ft/hr),

18-10-18; Continue drill Lateral, Rotate & slide f/ 9270' - 10280' (1010' @ 43 ft/hr).

18-10-19; Continue drill lateral, Rotate & slide f/ 10280' - 11234' (954' @ 40.6 ft/hr) 18-10-20; Rotate & slide f/ 11234' - 11431' (197' @ 39.4 ft/hr). Pump sweep. TOOH f/ bit #3. Change out BHA. TIH w/ bit #4. Wash & ream f/ 10550' - 11431'. Rotate & Slide f/ 11431' - 11480' (49' @ 49 ft/hr).

18-10-21; Rotate & slide f/ 11480' - 12580' (1100' @ 46.8 ft/hr).

18-10-22; Rotate & slide f/ 12580' - 13319' (739' @ 37.4 ft/hr). Pump sweep. Spot pill. Lay down drill pipe. 18-10-23; Lay down drill string and directional tools. Rig up casing crew & torque turn with casing: shoe, marker, FC, marker, LC, marker, Toe sleeve, 195 jts casing, airlock, 107 jts casing. Run 5-1/2" casing to 13319'.

18-10-24; Finish running 5-1/2" casing. Cement casing. Rig up cement head, test lines 4000 psi, cement casing with Lead 715 sks, (322 bbls), Class C with 0.60% retarder, 8.50% extender, 5.0 lbs/sk extender, 0.02 gals/sk antifoam, 0.25% extender, 0.13 lbs/sk lost circula, 0.03% viscosifier, wt 11.5, yield 2.53, mix water 14.47 gals/ sk, Tail 2426 sks, (584 bbls), Class H with 0.02gals/sk anti foam, 0.40% dispersant, 0.25% extender, 0.30% fluid loss, wt 14.2, yield 1.24, mix water 5.63 gals/sk, bumped plug to 2350 psi, floats held got back 2.5 bbls, circulated 122 sks, (55 bbls) cement to reserve. ✓ pm.

Rig down cementers unbolt stack and hang set casing slips w/ 105K. Nipple down BOP and lay out. Install 11" 5,000# X 7-1/16" 10,000# tubing head & test seals to 4200#

Rig down and Release rig @ 20:00 on 10/24/2018

Completion Report:

18-11-01 – 18-11-06: Set up water transfer, prep for logging.

18-11-07: MIRU QES WL truck, crane and Hudson pump truck. NU 7" 10M WL adapter flange, MU and calibrate WL tools, RIH w/ radial CBL, GR, CCL, tied into MJ @ 4690' and RIH to tag @ ±5790' Logged ±400' w/ no pressure on casing and made repeat pass, RBIH to 5850' and logged up w/ 1500 psi on casing to surface.

Butch's Rat Hole Anchor service set 4ea. dead man anchors and pull tested each to 23,000 lbs. Finished logging out to surface, BD casing, LD logging tools, left WL equipment in place for toe prep. SDFN

18-11-08; Oil States on location. Held safety meeting, Topic- heavy lifting and tag lines. MIRU Oil States crane truck. N/D dry cap flange. N/U 7 1/16" 10M frac tree. Tree consist of 2- 7 1/16M master gates, 1- flow cross w/ 4- 4" valves, 1- goat head w/ 4- 3" outlets and wireline adaptor flange. Torque bolts to 4200 ft/lbs and mark bolts and nuts. RDMO.

18-11-09: Rig up Crane Hot Oil Acidizing. Prime pumps, test lines and tree to 8500 psi. Open well, pressure up on 5 1/2" 20# csg to 7000 psi. Held psi f/ 5 min, found casing valve companion flange on tubing leaking, bottom bolt was handy loose. Bleed off casing.

Tighten loose bolt and check all other bolts. Pressure back on casing to 7000 psi, pressure dropping off quickly. Bring pressure back up to 7000 psi, maintain rate to keep 7000 psi. *Sleeve has partially shifted.* Pressure trending downward from 6850 psi @1.3 bpm to 6400 psi @1.4 bpm. Decision made to start acid. Start Acid- pump 60 bbls 2500 gal of 15% HCL 1.4 bpm @6600 psi.

Flush w. 293 bbls of treated water 1.4 bpm @6900 psi. With 210 bbls into flush, pressure increased to 7200 psi @1.4 bpm, decrease rate to 1 bpm @7000 psi.

Acid going out, well breaking back w/ 3 bbls of acid out. Increase rate to 5.5 bpm @4750 psi, 6 bpm @4150 psi. Shut down f/ 10 min soak w/ 30 bbls of acid gone and 30 bbls in casing. Pump remaining 30 bbls of acid 10 bpm @4350 psi, 10.4 bpm @4100 psi, 11.2 bpm @4000 psi. All acid gone, over displace by 10 bbls. Final and Max inj 11.6 bpm @3700 psi. Cwifn. RDMO Crane Hot Oil Acidizing. Salty Dawg top off pump down tanks f/ toe prep.

18-11-10: Rig up QES Wireline and Bosque pump trucks (Legend sub leased). Held safety meeting. Topic-good communication during pump down, stay away of high psi lines.

TOE PREP: SICP 765 psi. MU plug & gun assembly (4.380 ball drop TOMCAT frac plug & 4- guns loaded at 6 spf, .52 dia, loaded w/ Titan 21.0-gram charge, 42" penetration with 60 deg phasing). Test lines and lub to 8500 psi. RIH, Correlated w/ MJ @ 4650'. Started pump-down: 5 bpm/1850 psi, 10 bpm/4200 psi and 15 bpm/4900 psi. Stopped at 13218' CCL. Pulled up to plug setting depth. Max press-4900 psi. Fluid pumped- 411 bbls. Run in speed \pm 280-320 fpm @ \pm 550-700 lbs line tension. Attempt to pull up to plug setting depth, gun string pulling heavy to 1600 lbs, set brake w/ no wt loss, set plug at 13234'(10' low). Saw 3 ccl kicks but no wt lose and did not feel plug set. Tool string hung. Surge well - was able to get movement for short distance then pulling heavy again to 1600lbs. Surge well again- line tension dropping 500-600 #'s each surge, was able to get movement up to 1st perf depth. Pump 9 bpm past tool string, no wt gain or movement down hole. Tool string hung. Surge well - was able to get movement up hole, pooh 45 ft/min w/ tool string dragging to 12,100', spotty dragging up to 11,100', pulled clean remainder way out of the hole. Lay down tool string, verified plug set. Rih w/ 4 gun cluster and empty setting tool. Correlated w/ MJ @ 4650'. Started pump-down: 5 bpm/1840 psi, 10 bpm/4560 psi, and 15 bpm/4500 psi. Started loosening lines speed at 7100', got down to 60 ft/min, had to shut down pumps. Pull back to marker jt. Started pump down again: 5 bpm/2200 psi, 10 bpm/3850

psi, 15 pm/5200 psi. Tagged plug on depth at 12,234'. Max press-5800 psi. Fluid pumped- 600 bbls. Run in speed \pm 250-300 fpm @ \pm 400-450 lbs line tension. Attempt to pick up off of plug, line tension pulling heavy to 1900 lbs. Surge well, pull free for short distance and had to continue surging well between each set of perfs. Line tension would drop 500-600lbs each surge. Perforated at 13194', 13133', 13072', and 13011'. POOH. Tool string pulling fairly clean after 12,980'. Lay down gun string, all shots fired. Cwifn. RDMO Bosque pump trucks, Rid down QES WL, leave equipment on location.

18-11-11 thru 18-11-12: Meet w/ C&J frac coordinator, mark off f/ sand kings, acid and frac tanks. Call all vendors associated w/ frac and update them on rig up and frac date.

18-11-13 & 14: C&J set 1 sand king. Sunbelt delivered forklift. Set frac tanks and acid tanks.

18-11-15: C&J set 2 more sand kings, total of 3. Off load sand. Pima set 10 frac tanks. FTR set 2 acid tanks. Fluid Delivery set manifold and tie into frac tanks. Fluid Delivery set road crossing behind frac tanks, tie in lay flat line into manifold. Pima rigged up manifold, iron, and blocks. Pima delivered 10 lights, shower trailer and manlift. Salty Dawg off loaded 190 bbls of fresh water into each acid tank as per C&J request. Call vendors about Sunday 530 am safety meeting

18-11-16: Held safety meeting, Topic - backup flaggers. EEES laid containments. Spot Chem-Tec Scale Inhib trailer, off load 2nd S/I trailer onto ground to save space. MIRU Cudd Water Treatment. Tie into injector. Fluid Delivery filled tanks to 4' level w/ fresh water and biocide. Max rate 60 bpm. Move additional water over morning of frac due to cold temps. Off load sand. C&J spotted hydration unit and stage equipment on Squints location.

18-11-17: Held safety meeting w/ all personnel. Reviewed zero discharge policy on location and chemical handling. C&J MIRU 7 Frac pumps and manifold trailer, RU risers to frac head. WO remaining 5 C&J frac pumps to arrive from Midland yard. Mixed up 1 tank of acid. EEES put on restraints from the missile to the goat head,

4th sand king on location. 4 frac pumps arrived on location, 11 on location, 1 more to come. Rig frac pumps. Last frac pump arrived, rig in same. Total of 12 triplex frac pumps rigged in. Fire up frac equipment. Set up computer in data van.

18-11-18: Frac Stages 1-3; Perf Stages 2-4

Perf Stage 2- Perforated at 12951', 12890', 12825'(-4) and 12768'. POOH. LD tools confirmed plug and guns fired. Drop ball, turn over to frac. FRAC STAGE 2: PERF STAGE 3: SICP 2650 psi. MU plug & gun assembly (4.380 ball drop TOMCAT frac plug & 4- guns loaded at 6 spf, .52 dia, loaded w/ Titan 21.0-gram charge, 42" penetration with 60 deg phasing). RIH, Correlated w/ MJ @ 4650'. Started pump- down: 5 bpm/2060 psi, 10 bpm/2270 psi, and 15 bpm/2700 psi. Stopped at 12975' CCL. Pulled up to plug setting depth. Max press-3794 psi. Fluid pumped- 435 bbls. Run in speed ± 180 -250 fpm @ ± 450 -550 lbs line tension. Set plug at 12738', took 4 secs. Lost 128 lbs. Perforated at 12708', 12647', 12586' and 12530'(+5). POOH. LD tools confirmed plug and guns fired. Drop ball, turn over to frac. Frac stage 3; PERF STAGE 4: SICP 3040 psi. MU plug & gun assembly (4.380 ball drop TOMCAT frac plug & 4- guns loaded at 6 spf, .52 dia, loaded w/ Titan 21.0-gram charge, 42" penetration with 60 deg phasing). RIH, Correlated w/ MJ @ 4650'. Started pump- down:

Set plug at 12495', took 4 secs. Lost 350 lbs. Perforated at 12465', 12404', 12343' and 12282'. POOH. LD tools confirmed plug and guns fired.

18-11-19: Frac Stages 4-5 Perf Stages 5

RESUME FRAC STAGE 4; PERF STAGE 5: SICP 4600 psi. MU plug & gun assembly (4.380 ball drop TOMCAT frac plug & 4- guns loaded at 6 spf, .52 dia, loaded w/ Titan 21.0-gram charge, 42" penetration with 60 deg phasing). Pump down and Set plug at 12252', took 3 secs. Lost 255 lbs. Perforated at 12222', 12161', 12100' and 12044'(+5). POOH. LD tools confirmed plug and guns fired. Drop ball, turn over to frac. FRAC STAGE 5.

18-11-20: Perf Stage 6-9 Frac Stage 6-8

PERF STAGE 6: SICP 1800psi. MU plug & gun assembly (4.380 ball drop TOMCAT frac plug & 4- guns loaded at 6 spf, .52 dia, loaded w/ Titan 21.0-gram charge, 42" penetration with 60 deg phasing). RIH, Correlated w/ MJ @ 4650'. Pump Down and Set plug at 12009', took 2 secs. Lost 271 lbs. Perforated at 11979', 11918', 11857', and 11796'. POOH. LD tools confirmed plug and guns fired. Drop ball, turn over to frac. FRAC STAGE 6:

PERF STAGE 7: SICP 3400psi. MU plug & gun assembly (4.380 ball drop TOMCAT frac plug & 4-guns loaded at 6 spf, .52 dia, loaded w/ Titan 21.0-gram charge, 42" penetration with 60 deg phasing). RIH, Correlated w/ MJ @ 4650'. Perforated at 11736', 11675', 11614', and 11538'. POOH. LD tools confirmed plug and guns fired. Frac Stage 7.

PERF STAGE 8: SICP 3890 psi. MU plug & gun assembly (4.380 ball drop TOMCAT frac plug & 4-guns loaded at 6 spf, .52 dia, loaded w/ Titan 21.0-gram charge, 42" penetration with 60 deg phasing). RIH, Correlated w/ MJ @ 4650'. Perforated at 11493', 11432', 11371', and 11310'. POOH. LD tools confirmed plug and guns fired. Drop ball, turn over to frac. FRAC Stage 8.

PERF STAGE 9: SICP 3140 psi. MU plug & gun assembly (4.380 ball drop TOMCAT frac plug & 4-guns loaded at 6 spf, .52 dia, loaded w/ Titan 21.0-gram charge, 42" penetration with 60 deg phasing). RIH, Correlated w/ MJ @ 4650'. Pump Down. Set plug at 11280', took 3 secs. Lost 350 lbs. Perforated at 11250', 11189', 11128', and 11072'. POOH. LD tools confirmed plug and guns fired. Drop ball, turn over to frac.

18-11-21: Frac Stg 9-11 Perf Stg 10-12 . Frac Stage 9; PERF STAGE 10: SICP 2250 psi. MU plug & gun assembly (4.380 ball drop TOMCAT frac plug & 4- guns loaded at 6 spf, .52 dia, loaded w/ Titan 21.0-gram charge, 42" penetration with 60 deg phasing). RIH, Correlated w/ MJ @ 4650'. Started pump- down: Set plug at 11037', took 2 secs. Lost 350 lbs. Perforated at 11007', 10946', 10885', and 10824'. POOH. LD tools confirmed plug and guns fired. Frac Stage 10.

PERF STAGE 11: SICP 2466 psi. MU plug & gun assembly (4.380 ball drop TOMCAT frac plug & 4-guns loaded at 6 spf, .52 dia, loaded w/ Titan 21.0-gram charge, 42" penetration with 60 deg phasing). RIH, Correlated w/ MJ @ 4650'. Started pump- down: Set plug at 10794', took 9 secs. Lost 350 lbs. Perforated at 10769', 10703', 10642', and 10581'. POOH. LD tools confirmed plug and guns fired. Dropped ball on top master gate, turned well over to frac. FRAC STAGE 11.

PERF STAGE 12: SICP 2965 psi. MU plug & gun assembly (4.380 ball drop TOMCAT frac plug & 4-guns loaded at 6 spf, .52 dia, loaded w/ Titan 21.0-gram charge, 42" penetration with 60 deg phasing). RIH, Correlated w/ MJ @ 4650'. Started pump- down: Set plug at 10551', took 3 secs. Lost 295 lbs. Perforated at 10521', 10462', 10399', and 10338. POOH. LD tools confirmed plug and guns fired. Dropped ball on top master gate, turned well over to frac.

18-11-22: Frac Stages 12-18 Perf Stages 13-18 ; Frac Stage 12.

Perf Stage 13: SICP 2590 psi. MU plug & gun assembly (4.380 ball drop TOMCAT frac plug & 4-guns loaded at 6 spf, .52 dia, loaded w/ Titan 21.0-gram charge, 42" penetration with 60 deg phasing). RIH, Correlated w/ MJ @ 4650'. Started pump- down: Set plug at 10308', took 12 secs. Lost 335 lbs. Perforated at 10284'(+6'), 10217', 10156', and 10095'. POOH. LD tools confirmed plug and guns fired. Frac Stage 13.

PERF STAGE 14: SICP 2530 psi. MU plug & gun assembly (4.380 ball drop TOMCAT frac plug & 4-guns loaded at 6 spf, .52 dia, loaded w/ Titan 21.0-gram charge, 42" penetration with 60 deg phasing). RIH, Correlated w/ MJ @ 4650'. Started pump- down: Set plug at 10066', took 2 secs.

Lost 320 lbs. Perforated at 10035', 9978'(+2'), 9913, and 9852'. POOH. LD tools confirmed plug and guns fired. Dropped ball on top master gate, turned well over to frac. FRAC STAGE 14.

PERF STAGE 15: SICP 2550 psi. MU plug & gun assembly (4.380 ball drop TOMCAT frac plug & 4-guns loaded at 6 spf, .52 dia, loaded w/ Titan 21.0-gram charge, 42" penetration with 60 deg phasing). RIH, Correlated w/ MJ @ 4650'. Started pump- down: Set plug at 9822', took 2 secs. Lost 364 lbs. Perforated at 9791', 9731', 9670', and 9609'. POOH. LD tools confirmed plug and guns fired. Dropped ball on top master gate, turned well over to frac. FRAC STAGE 15.

PERF STAGE 16: SICP 3350 psi. MU plug & gun assembly (4.380 ball drop TOMCAT frac plug & 4-guns loaded at 6 spf, .52 dia, loaded w/ Titan 21.0-gram charge, 42" penetration with 60 deg phasing). RIH, Correlated w/ MJ @ 4650'. Started pump- down: Set plug at 9581'(+2), took 3 secs. Lost 260 lbs. Perforated at 9549', 9485'(-3), 9427', and 9366'. POOH. LD tools confirmed plug and guns fired. FRAC STAGE 16.

PERF STAGE 17: SICP 3556 psi. MU plug & gun assembly (4.380 ball drop TOMCAT frac plug & 4-guns loaded at 6 spf, .52 dia, loaded w/ Titan 21.0-gram charge, 42" penetration with 60 deg phasing). RIH, Correlated w/ MJ @ 4650'. Started pump- down: Set plug at 9336', took 3 secs. Lost 300 lbs. Perforated at 9306', 9245', 9180'(-4)', and 9123'. POOH. LD tools confirmed plug and guns fired. Drop ball, turn over to frac. FRAC STAGE 17.

PERF STAGE 18: SICP 3556 psi. MU plug & gun assembly (4.380 ball drop TOMCAT frac plug & 4-guns loaded at 6 spf, .52 dia, loaded w/ Titan 21.0-gram charge, 42" penetration with 60 deg phasing). RIH, Correlated w/ MJ @ 4650'. Started pump- down: Set plug at 9093', took 3 secs. Lost 175 lbs. Perforated at 9063', 9002', 8941', and 8880'. POOH. LD tools confirmed plug and guns fired. Drop ball, turn over to frac. FRAC Stage 18.

18-11-23: Perf Stages 19-25 Frac Stages 19-24 ;

PERF STAGE 19: SICP 2970 psi. MU plug & gun assembly (4.380 ball drop TOMCAT frac plug & 4-guns loaded at 6 spf, .52 dia, loaded w/ Titan 21.0-gram charge, 42" penetration with 60 deg phasing). RIH, Correlated w/ MJ @ 4650'. Started pump- down: Set plug at 8850', took 2 secs. Lost 300 lbs. Perforated at 8820', 8759', 8695', and 8637'. POOH. LD tools confirmed plug and guns fired. FRAC STAGE 19.

PERF STAGE 20: SICP 2450 psi. MU plug & gun assembly (4.380 ball drop TOMCAT frac plug & 4-guns loaded at 6 spf, .52 dia, loaded w/ Titan 21.0-gram charge, 42" penetration with 60 deg phasing). RIH, Correlated w/ MJ @ 4650'. Started pump- down: Set plug at 8607', took 2 secs. Lost 370 lbs. Perforated at 8577', 8516', 8455', and 8400'(+6'). POOH. LD tools confirmed plug and guns fired. Dropped ball on top master gate, turned well over to frac. FRAC STAGE 20.

PERF STAGE 21: SICP 2450 psi. MU plug & gun assembly (4.380 ball drop TOMCAT frac plug & 4-guns loaded at 6 spf, .52 dia, loaded w/ Titan 21.0-gram charge, 42" penetration with 60 deg phasing). RIH, Correlated w/ MJ @ 4650'. Started pump- down: Set plug at 8364', took 2 secs. Lost 332 lbs. Perforated at 8334', 8273', 8212', and 8151'. POOH. LD tools confirmed plug and guns fired. Dropped ball on top master gate, turned well over to frac. FRAC STAGE 21.

PERF STAGE 22: SICP 3260 psi. MU plug & gun assembly (4.380 ball drop TOMCAT frac plug & 4-guns loaded at 6 spf, .52 dia, loaded w/ Titan 21.0-gram charge, 42" penetration with 60 deg phasing). RIH, Correlated w/ MJ @ 4650'. Started pump- down: Set plug at 8121', took 2 secs. Lost 220 lbs. Perforated at 8091', 8030', 7969', and 7912'(+4). POOH. LD tools confirmed plug and guns fired. FRAC STAGE 22.

PERF STAGE 23: SICP 3000 psi. MU plug & gun assembly (4.380 ball drop TOMCAT frac plug & 4-guns loaded at 6 spf, .52 dia, loaded w/ Titan 21.0-gram charge, 42" penetration with 60 deg phasing). RIH, Correlated w/ MJ @ 4650'. Started pump- down: Set plug at 7878', took 2 secs. Lost 280 lbs. Perforated at 7848', 7787', 7726', and 7665'. POOH. LD tools confirmed plug and guns fired. Drop ball, turn over to frac. FRAC STAGE 23.

PERF STAGE 24: SICP 3025 psi. MU plug & gun assembly (4.380 ball drop TOMCAT frac plug & 4-guns loaded at 6 spf, .52 dia, loaded w/ Titan 21.0-gram charge, 42" penetration with 60 deg phasing). RIH, Correlated w/ MJ @ 4650'. Started pump- down: Set plug at 7635', took 3 secs. Lost 125 lbs. Perforated at 7605', 7544', 7438', and 7421'(+4). POOH. LD tools confirmed plug and guns fired. Drop ball, turn over to frac. FRAC STAGE 24.

PERF STAGE 25: SICP 3060 psi. MU plug & gun assembly (4.380 ball drop TOMCAT frac plug & 4-guns loaded at 6 spf, .52 dia, loaded w/ Titan 21.0-gram charge, 42" penetration with 60 deg phasing). RIH, Correlated w/ MJ @ 4650'. Started pump- down: Set plug at 7392', took 3 secs. Lost 260 lbs. Perforated at 7362', 7301', 7240', and 7179'. POOH. LD tools confirmed plug set and guns fired.

18-11-24: Frac Stages 25-30 Perf Stages 26-30, Set Kill Plug, Test Casing RDMO frac and wireline.

FRAC Stage 25.

PERF STAGE 26: SICP 2300 psi. MU plug & gun assembly (4.380 ball drop TOMCAT frac plug & 4-guns loaded at 6 spf, .52 dia, loaded w/ Titan 21.0-gram charge, 42" penetration with 60 deg phasing). RIH, Correlated w/ MJ @ 4650'. Started pump- down: Set plug at 8364', took 2 secs. Lost 250 lbs. Perforated at 7119', 7058', 6997', and 6940'(+4'). POOH. LD tools confirmed plug and guns fired. Dropped ball on top master gate, turned well over to frac. FRAC STAGE 26.

PERF STAGE 27: SICP 2575 psi. MU plug & gun assembly (4.380 ball drop TOMCAT frac plug & 4-guns loaded at 6 spf, .52 dia, loaded w/ Titan 21.0-gram charge, 42" penetration with 60 deg phasing). RIH, Correlated w/ MJ @ 4650'. Started pump- down: Set plug at 6946', took 2 secs. Lost 290 lbs. Perforated at 6876', 6815', 6754', and 6693'. POOH. LD tools confirmed plug and guns fired. Dropped ball on top master gate, turned well over to frac. FRAC STAGE 27.

PERF STAGE 28: SICP 2890 psi. MU plug & gun assembly (4.380 ball drop TOMCAT frac plug & 4-guns loaded at 6 spf, .52 dia, loaded w/ Titan 21.0-gram charge, 42" penetration with 60 deg phasing). RIH, Correlated w/ MJ @ 4650'. Started pump- down: Set plug at 6663, took 2 secs. Lost 260 lbs. Perforated at 6633', 6572', 6511', and 6454'(+4'). POOH. LD tools confirmed plug and guns fired. FRAC STAGE 28.

PERF STAGE 29: SICP 3200 psi. MU plug & gun assembly (4.380 ball drop TOMCAT frac plug & 4-guns loaded at 6 spf, .52 dia, loaded w/ Titan 21.0-gram charge, 42" penetration with 60 deg phasing). RIH, Correlated w/ MJ @ 4650'. Started pump- down: Set plug at 6420, took 3 secs. Lost 275 lbs. Perforated at 6390', 6326'(-3), 6238', and 6207'. POOH. LD tools confirmed plug and guns fired. Drop ball, turn over to frac. FRAC STAGE 29.

PERF STAGE 30: SICP 3640 psi. MU plug & gun assembly (4.380 ball drop TOMCAT frac plug & 4-guns loaded at 6 spf, .52 dia, loaded w/ Titan 21.0-gram charge, 42" penetration with 60 deg phasing). RIH, Correlated w/ MJ @ 4650'. Started pump- down: Set plug at 6177', took 3 secs. Lost 205 lbs. Perforated at 6147', 6086', 6025', and 5964'. POOH. LD tools confirmed plug and guns fired. Drop ball, turn over to frac. FRAC STAGE 30.

KILL PLUG: SICP 2930 psi, RIH w CCL. Wt bar, Baker 20 setting tool and ProDrill solid CBP. Tied into MJ @ 4650, set kill plug at 5350', lost 250 lbs tension in 3 sec. Pooh, bleed down casing to 0 psi f/ negative test. LD tools confirmed plug set. **Positive test plug and casing to 7000 psi f/ 30 min. Good test. See attached Chart.**

Rig down C&J frac and frac support equipment.

18-11-25: Held safety meeting w/ all personnel, reviewed crane safety. finish RD C&J frac equipment. Unable to move WO rig today due to high winds. Spotted Gravity reverse unit and tank, Spotted additional FT for flowback, PIMA RU flowback and plug catcher.

18-11-26: MIRU WO rig. M/U 4 5/8" JZ bit, float and flappers valves. P/u 2 7/8" ph6 p-110 7.9# ws. Circ out casing volume. Drill out Kill Plug and frac plugs 1-5. Changed out Reverse pump due to fluid end issues. Drilled out plugs 6 and 7, washed down to plug #8.

18-11-27: Drilled frac plugs 8-15, tagged 16, started circulating BU, reverse pump lost rate, tubing became stuck, suspected sand. Circ out at 4 bpm w/ kill truck. Pipe free. Change out rev pump, emptied rev pit, found 2 chunks of dried up chemical in suction hose restricting flow. Repair same. Drill frac plugs 16-19. Install extra flapper valve on bottom of jt 329.

Drill frac plug #20. Tag #21, pump big circ.

18-11-28: Drilled frac plugs 21-30. Tagged toe sleeve. Circulated 2 gel sweeps around to surface to cleanout well. Pulled 4 Jts with power swivel pulling 68k. Hole seems clean. Rigged down swivel. Rigged up tongs and elevators to lay down workstring. Pooh laying down workstring to just below the curve. Pulling 80jts to 10,750'.. Got to jt#339. Removed string float from workstring and we have some flow up tubing. Pulled 4jts but flow stayed steady. Installed tiw valve in tubing & contacted Rick Fields. Decision was made to flow well back at .5bpm & work pipe up & down every hr. Flowing well to gas buster tank at .5bpm. Got pressure down from 760psi to 620psi.

18-11-29: Flow Back Well: Flowing well at .5bpm at 620psi. Choke at 22. Worked pipe up & down. Had safety meeting. Discussed pinch points & forktruck safety with pooh with workstring. Rigged up line to check pressure on workstring in hole. Tubing pressure-610psi. Bled off pressure. It blowed right down. Removed hose & tiw valve. Prepared to pooh laying down jts. Began pooh laying down jts from 335(10,468') to Jt#197(6156'). Stopped @ Jt#197(6,156') , pumped 1 gal gel sweep, 35 bbls FW, 1 gal gel sweep and 175 bbls surface to surface, pump rate 4 bpm/1400 psi, returns 4 bpm/475 psi on a #33 ck. SIP: 710 psi. Began pooh laying down jts from Jt#197(6156') to Jt#149(4656') Secure well with TIW & Bop's. R/D Plug Catcher & Globe reverse unit. Sip-620psi. Pima Flowing Back Well @ 1 Bpm @ 550 Psi. Choke on a 18. RELEASED RIG CREW @ 1330 Hrs. Flowed back well all night at 1.5bpm. Pressure dropped from 675psi to 430psi. Sip at 6am was 480psi.

18-11-30: Flow Back Well: Flow well to gas buster @ 1.5 bpm @ 420 psi on 22 choke. Total Bbl's to date-2025. Had safety with flowback. Discussed pressurized lines & h2s. Flow well to gas buster @ 1.5 bpm @ 420 psi on 22 choke. Total Bbl's to date-2115. H2s reading at tank- 40ppm. Flowed well during the night. Flowed from 420psi to 300psi.

18-12-01: Flow Back Well: Flowed well for 24Hrs. Pressure went from 300psi to 195psi. Shutin pressure went from 310psi to 255psi. Fluid wt-8.8#. Flowing at 1.5bpm. Total fluid returned to date-6255bbl.

18-12-02: Flowed well for 24Hrs. Pressure went from 195psi to 150psi. Shutin pressure went from 255psi to 200psi. Fluid wt-8.8#. Flowing at 1.5bpm. Total fluid returned to date-8415bbl.

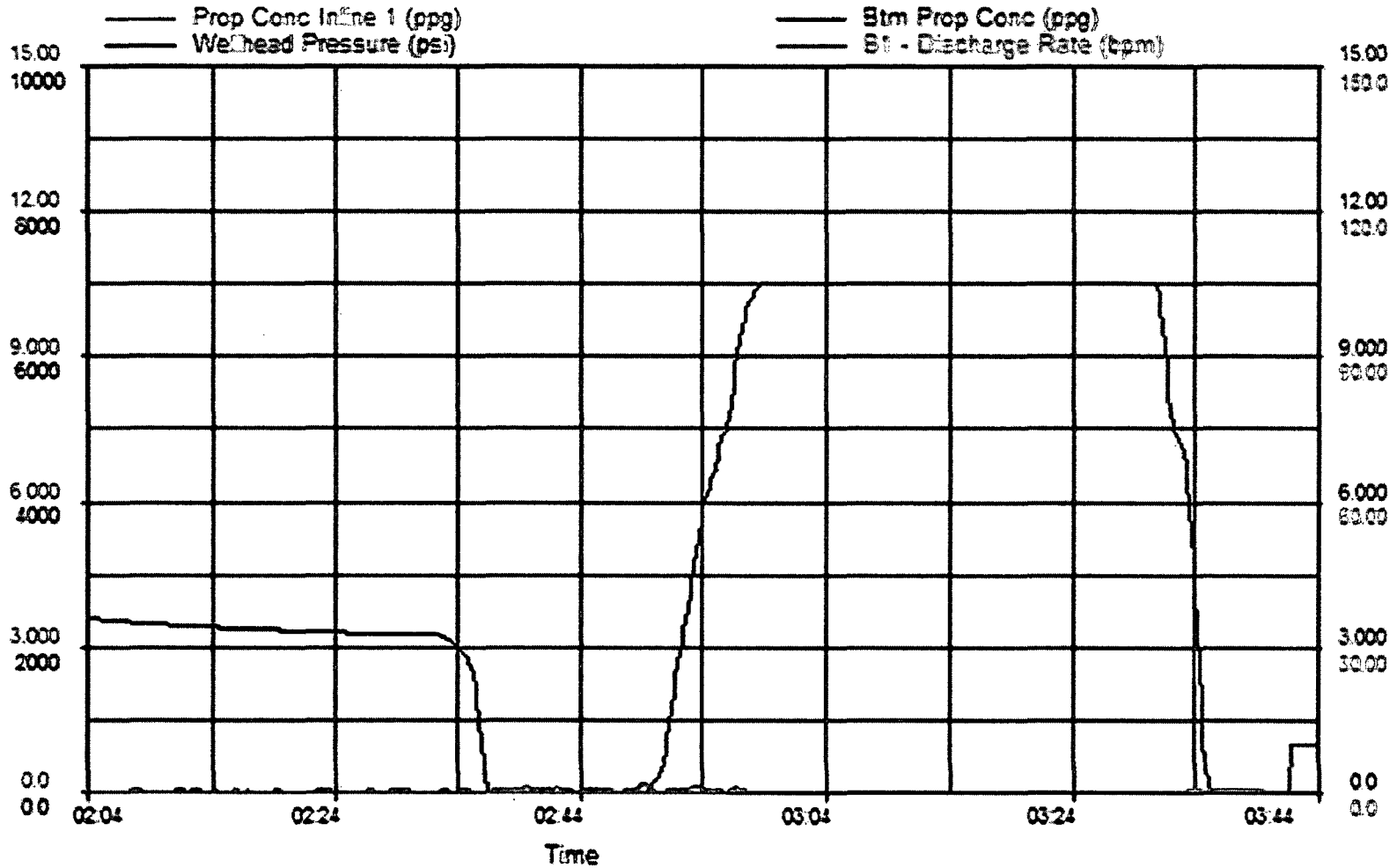
18-12-03: Flow well to gas buster @ 1.5 bpm @ 150 psi on 32 choke. Total Bbl's to date-8505. Waiting on salty dawg brine truck. Total Bbl's to date-8595. Hook Up Pump Truck, Start Pumping 10.1 Bine To Kill Well @ 1.5 bpm @ 400 psi. Once 10.1 Reached EOT Press Started Dropped To 50 Psi. Once 100 bbls Pumped Press Dropped To Zero But Still Had Small Returns Once 125 Pumped Well Was Dead. LD 148 jts 2-7/8" ph6 WS, float, 1 jt 2-7/8" WS, float, BS, and 4-5/8" rock bit. 149 jts total. Found a split in tubing at 46jts above bit. Tally 2-7/8" 6.5# L80 EUE production tbg, PU and RIH same open ended. RIH 167 jts, secured well/rig. SDFN. Will TOH and stand back to run ESP in a.m.

18-12-04: Arrived on location. Had safety meeting. Discussed pinch points while running pump. Also discussed cold weather precautions. Serviced & started equipment. Checked well. Well dead. Not blowing or on a vacuum. Rigged up salty dawg. Pumped 40bbl of 10.1# brine down tubing & 50bbl of 10.1# brine down casing. TOOH standing back 166 jts of 2-7/8" prod'n tbg. RD Pima FB equipment. Changed out pipe rams from 2-7/8" std to 2-7/8" REDA. P/U Baker ESP Assy. r/u spooling units, discharge .50, #1 pump 23.50' 4.0od, #2 pump 23.50' 4.0od, #3 pump 23.50' 4.0od, #4 pump 8.60' 4.0od, #5 pump ginpsl 8.60, #1 gas sep/intake 2.90' 4.0od, #1 seal 6.10' 4.0od, #2 seal 6.10' 4.0od, #1 motor 32.10' 4.50od. Sensor 3.40'. TOTAL LENGTH 138.80'. R/U Tbg. Tester & Rih W/25 Jts, M/U 4' CT Sub, Cont, Rih Testing 169 jts of 2-7/8 tubing To 7000 Psi. intake at 5509.85'. and Sensor at 5557.55'. 169 jts = 5401.75'. CT @ 4638.65'. . KB 13'. Installed 485 monel bands. 23 cannon clamps. Gravity(globe) cleaned out gasbuster & 2 flowback tanks. Rig down test truck and spooling units. Make final tie in, m/u hanger, land same. Nipple down bop. Install Master Valve. Baker tested pump and tested good. Secured well & location. Will rigdown in the am and move rig to whiteport 2h. Sdfn

18-12-05: AOL held safety meeting with all personal onsite H2S. Haarmyer electric finished underground. Sundown roustabout finished plumbing wh. Set and tested all paramters and kills on drive. Found bad CIM board on drive swapped out. Checked and confirmed rotation at 40 hz, instant pump up. Static PIP 2664 motor temp 112 950 tbg psi. **monitored well turned over to production.**

Saul Goodman #2H Stage 30

5.5" Casing Test



Treatment Plot (Customer)

11/25/2018

General	Company:	Steward Energy II, LLC		Prospect:	Bronco
	Well Name:	Saul Goodman Fee 2H		TD (MD/TVD):	13319'/5308'
	County:	Lea		Elevation:	3783 GL & 3796' KB
	State:	New Mexico		Latitude & longitude:	33.112287/-103.088985
	API Number:	30-025-45129		Section-Township-Range	Sec 2-Ts 14s-R38e
				Surface Location:	214' FNL & 250' FEL
				Bottom Hole Location:	J-26-13s-38e 2604 FSL-1106 FEL

Formation	Depth		Casing Profile	Hole Size	Casing Specifications	Mud & Cement Program
	MD	TVD				
Rustler	2268	2240		12 1/4"	9 5/8" 36#/ft I-55	Cement Lead w/ 790 sxs Class C, Tail 205 sxs w Class C Circulate 195 Sxs to surface
Salado	2390	2360				
9 5/8" Casing @ 2435'						
Tansill	3112	3065		8 3/4"	5 1/2" 20#/ft L-80 BTC	Cement Lead w/715sx Class C, Tail w/2646sx Class H Circulate 122 Sxs to surface 9 Deg DL @ 4710'
Yates	3209	3160				
Seven Rivers	3470	3415				
Queen	4016	3950				
Grayburg	4405	4335				
San Andres	4674	4601				
KOP	4697					
Manz Marker	5299	5126				
Chambliss A	5433	5195				
PI Marker	5505	5231				
Brahaney B	5630	5291		8 3/4"	5 1/2" 20#/ft L-80 BTC	Curve 4697'-6111'
				8 3/4"	5 1/2" 20#/ft L-80 BTC	TD Lateral @ 13319' MD/ 5308' TVD Lateral: 6111' - 13319'

Comments	Amended By Price LLC-Jan 14, 2019	
	1. Removed Castille Formation-Not present at this location	
	2. Corrected Surface & Bottom Hole Location	
	3. Corrected Curve Land Point, and Final TD.	
	4. Re-drew well bore to show cement behind 5.5" casing.	

District I
1625 N. French Dr., Hobbs, NM 88240
Phone: (575) 393-6161 Fax: (575) 393-0720
District II
811 S. First St., Artesia, NM 88210
Phone: (575) 748-1283 Fax: (575) 748-9720
District III
1000 Rio Brazos Road, Aztec, NM 87410
Phone: (505) 334-6178 Fax: (505) 334-6170
District IV
1220 S. St. Francis Dr., Santa Fe, NM 87505
Phone: (505) 476-3460 Fax: (505) 476-3462

State of New Mexico
Energy, Minerals & Natural Resources
Department
OIL CONSERVATION DIVISION
1220 South St. Francis Dr.
Santa Fe, NM 87505

FORM C-102
Revised August 1, 2011
Submit one copy to appropriate
District Office

☒ AMENDED REPORT

WELL LOCATION AND ACREAGE DEDICATION PLAT

¹ API Number 30-025-45129	² Pool Code 7500	³ Pool Name Bronco San Andres South
⁴ Property Code 322272	⁵ Property Name SAUL GOODMAN FEE "AS DRILLED"	
⁷ OGRID No. 371682	⁸ Operator Name STEWARD ENERGY II, LLC	⁶ Well Number 2H ⁹ Elevation 3783'

¹⁰Surface Location

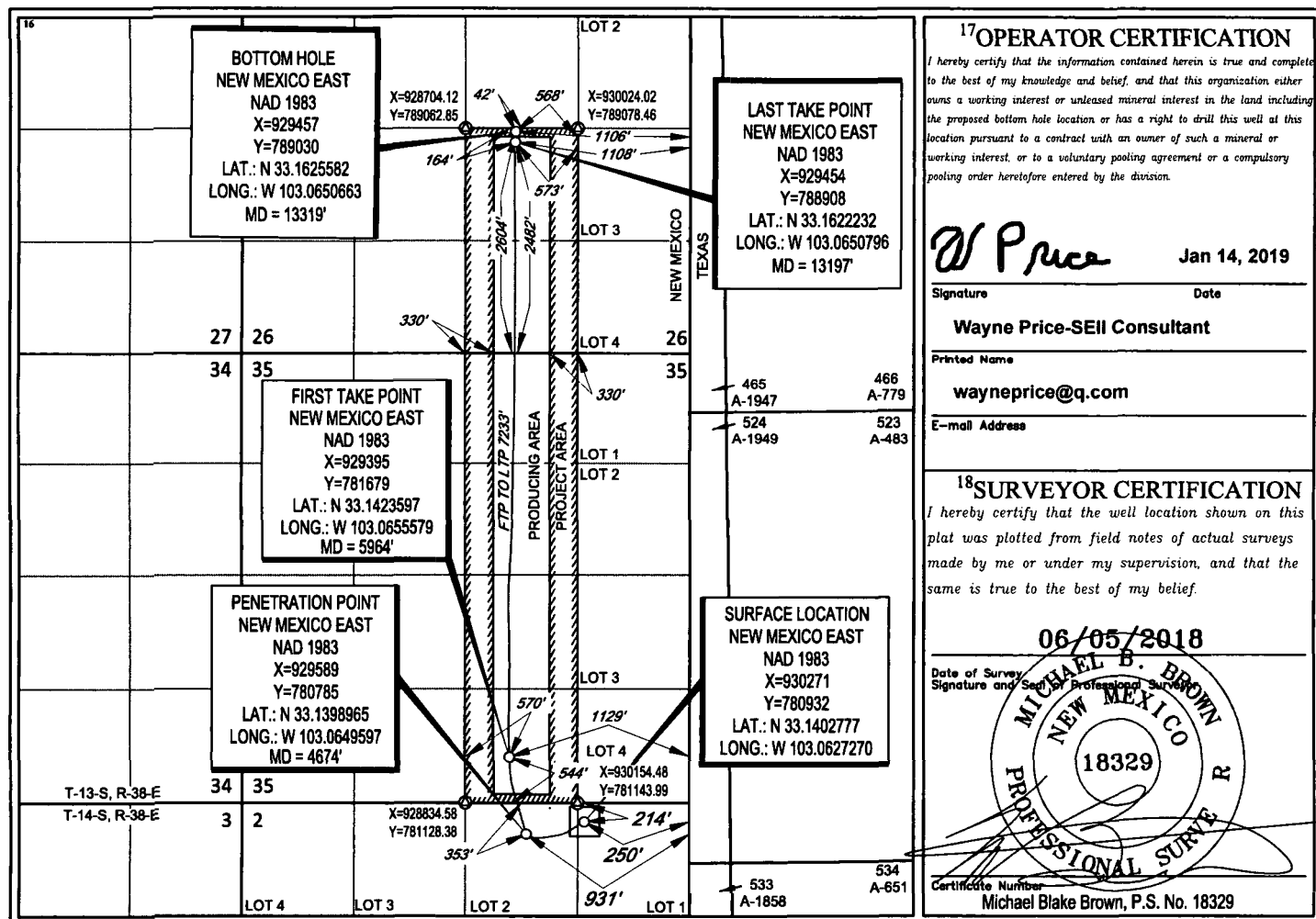
UL or lot no.	Section	Township	Range	Lot Idn	Feet from the	North/South line	Feet from the	East/West line	County
A	2	14-S	38-E	-	214'	NORTH	250'	EAST	LEA

¹¹Bottom Hole Location If Different From Surface

UL or lot no.	Section	Township	Range	Lot Idn	Feet from the	North/South line	Feet from the	East/West line	County
J	26	13-S	38-E	-	2604'	SOUTH	1106'	EAST	LEA

¹² Dedicated Acres 240	¹³ Joint or Infill	¹⁴ Consolidation Code	¹⁵ Order No.
--------------------------------------	-------------------------------	----------------------------------	-------------------------

No allowable will be assigned to this completion until all interests have been consolidated or a non-standard unit has been approved by the division.



¹⁷OPERATOR CERTIFICATION

I hereby certify that the information contained herein is true and complete to the best of my knowledge and belief, and that this organization either owns a working interest or unleased mineral interest in the land including the proposed bottom hole location or has a right to drill this well at this location pursuant to a contract with an owner of such a mineral or working interest, or to a voluntary pooling agreement or a compulsory pooling order heretofore entered by the division.

W Price Jan 14, 2019
Signature Date

Wayne Price-SEI Consultant

Printed Name

wayneprice@q.com

E-mail Address

¹⁸SURVEYOR CERTIFICATION

I hereby certify that the well location shown on this plat was plotted from field notes of actual surveys made by me or under my supervision, and that the same is true to the best of my belief.

06/05/2018

Date of Survey
Signature and Seal of Professional Surveyor

MICHAEL B. BROWN
NEW MEXICO
18329
PROFESSIONAL SURVEYOR

Certificate Number
Michael Blake Brown, P.S. No. 18329