

District I  
1625 N. French Dr., Hobbs, NM 88240  
Phone: (575) 393-6161 Fax: (575) 393-0720  
District II  
811 S. First St., Artesia, NM 88210  
Phone: (575) 748-1283 Fax: (575) 748-9720  
District III  
1000 Rio Brazos Road, Aztec, NM 87410  
Phone: (505) 334-6178 Fax: (505) 334-6170  
District IV  
1220 S. St. Francis Dr., Santa Fe, NM 87505  
Phone: (505) 476-3460 Fax: (505) 476-3462

State of New Mexico  
Energy, Minerals & Natural Resources  
Department  
OIL CONSERVATION DIVISION  
1220 South St. Francis Dr.  
Santa Fe, NM 87505

FORM C-102

Revised August 1, 2011

Submit one copy to appropriate

District Office

☐ AMENDED REPORT

WELL LOCATION AND ACREAGE DEDICATION PLAT

<sup>1</sup> API Number 30-025- 45039	<sup>2</sup> Pool Code 98180	<sup>3</sup> Pool Name WC025 G09 S253309 P; Upper Wolfcamp
<sup>4</sup> Property Code 322220	<sup>5</sup> Property Name AUDACIOUS 19 FEDERAL	<sup>6</sup> Well Number 721 H
<sup>7</sup> OGRID No. 7377	<sup>8</sup> Operator Name EOG RESOURCES, INC.	<sup>9</sup> Elevation 3463'

<sup>10</sup>Surface Location

UL or lot no.	Section	Township	Range	Lot Idn	Feet from the	North/South line	Feet from the	East/West line	County
L	19	25-S	33-E	-	2186'	SOUTH	879'	WEST	LEA

UL or lot no.	Section	Township	Range	Lot Idn	Feet from the	North/South line	Feet from the	East/West line	County
M	30	25-S	33-E	-	132'	SOUTH	678'	WEST	LEA

<sup>12</sup> Dedicated Acres 240.76	<sup>13</sup> Joint or Infill	<sup>14</sup> Consolidation Code	<sup>15</sup> Order No.
---	-------------------------------	----------------------------------	-------------------------

No allowable will be assigned to this completion until all interests have been consolidated or a non-standard unit has been approved by the division.

**KICK OFF POINT**  
NEW MEXICO EAST  
NAD 1983  
X=762873  
Y=406559  
LAT: N 32.1159524  
LONG: W 103.6177799  
MD = 12117

**SURFACE LOCATION**  
NEW MEXICO EAST  
NAD 1983  
X=763097  
Y=406251  
LAT: N 32.1148363  
LONG: W 103.6170965

**FIRST TAKE POINT**  
NEW MEXICO EAST  
NAD 1983  
X=762869  
Y=406023  
LAT: N 32.1142141  
LONG: W 103.6178083  
MD = 13017

**LAST TAKE POINT**  
NEW MEXICO EAST  
NAD 1983  
X=762940  
Y=398949  
LAT: N 32.0947700  
LONG: W 103.6177316  
MD = 20104

**BOTTOM HOLE LOCATION**  
NEW MEXICO EAST  
NAD 1983  
X=762941  
Y=398918  
LAT: N 32.0946771  
LONG: W 103.6177288  
MD = 20138

POINT	UTM ZONE 13 COORDINATES
BL	X=2056460.239 Y=11852087.240
NDP	X=2056234.143 Y=11852093.873
FTP	X=2056231.538 Y=11852093.877
LTP	X=2056467.363 Y=11852098.323
BL	X=2056460.240 Y=11852092.344

**17 OPERATOR CERTIFICATION**  
I hereby certify that the information contained herein is true and complete to the best of my knowledge and belief, and that this organization either owns a working interest or unleased mineral interest in the land including the proposed bottom hole location or has a right to drill this well at this location pursuant to a contract with an owner of such a mineral or working interest, or to a voluntary pooling agreement or a compulsory pooling order heretofore entered by the division.

Signature: Kay Maddox Date: 1/9/2019

Printed Name: KAY MADDOX

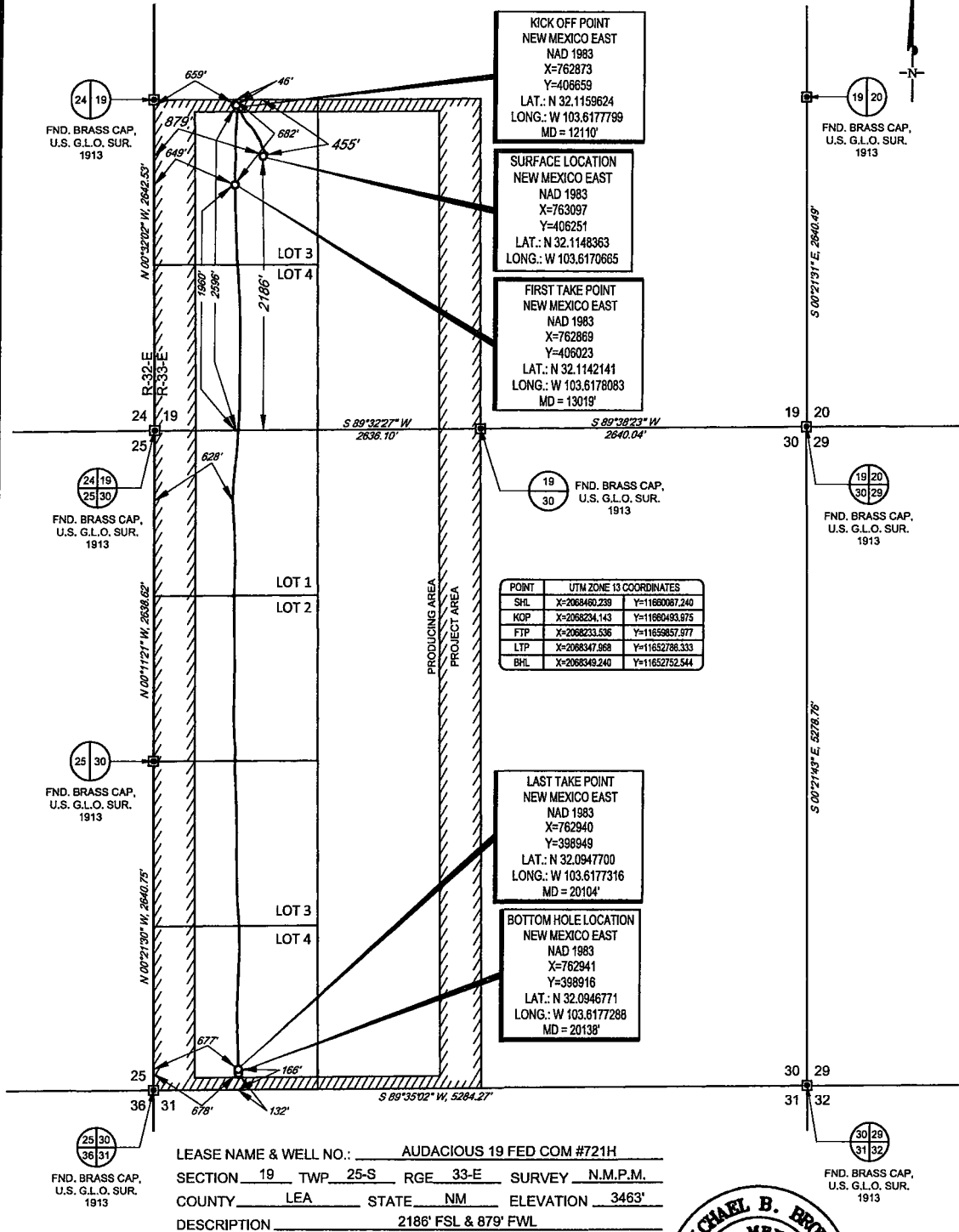
E-mail Address: \_\_\_\_\_

**18 SURVEYOR CERTIFICATION**  
I hereby certify that the well location shown on this plat was plotted from field notes of actual surveys made by me or under my supervision, and that the same is true to the best of my belief.

Date of Survey: 01/15/2018  
Signature and Seal: MICHAEL B. BROWN  
Professional Surveyor  
Certificate Number: 18329

SCALE: 1" = 1000'  
0' 500' 1000'

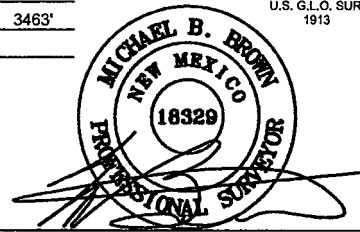
SECTION 19, TOWNSHIP 25-S, RANGE 33-E, N.M.P.M.  
LEA COUNTY, NEW MEXICO



**EOG resources, Inc.**

**TOPOGRAPHIC**  
LOYALTY INNOVATION LEGACY

1400 EVERMAN PARKWAY, Ste. 146 • FT. WORTH, TEXAS 76140  
TELEPHONE: (817) 744-7512 • FAX (817) 744-7554  
2903 NORTH BIG SPRING • MIDLAND, TEXAS 79705  
TELEPHONE: (432) 682-1653 OR (800) 787-1653 • FAX (432) 682-1743  
WWW.TOPOGRAPHIC.COM



Michael Blake Brown, P.S. No. 18329  
DECEMBER 27, 2018

AUDACIOUS 19 FED COM #721H AS-COMPLETED	REVISION:
DATE: 11/13/2018	
FILE:AD_AUDACIOUS_19_FED_721H	
DRAWN BY: A.V.F.	
SHEET: 1 OF 1	

NOTES:  
1. ORIGINAL DOCUMENT SIZE: 8.5" X 11"  
2. ALL BEARINGS, DISTANCES, AND COORDINATE VALUES CONTAINED HEREIN ARE GRID BASED UPON THE NEW MEXICO COORDINATE SYSTEM OF 1983, EAST ZONE, U.S. SURVEY FEET.  
3. THIS WELL LOCATION SHOWN HEREON HAS BEEN SURVEYED ON THE GROUND UNDER MY SUPERVISION AND PREPARED ACCORDING TO THE EVIDENCE FOUND AT THE TIME OF SURVEY, AND DATA PROVIDED BY EOG RESOURCES, INC. THIS CERTIFICATION IS MADE AND LIMITED TO THOSE PERSONS OR ENTITIES SHOWN ON THE FACE OF THIS PLAT AND IS NON-TRANSFERABLE. THIS SURVEY IS CERTIFIED FOR THIS TRANSACTION ONLY.