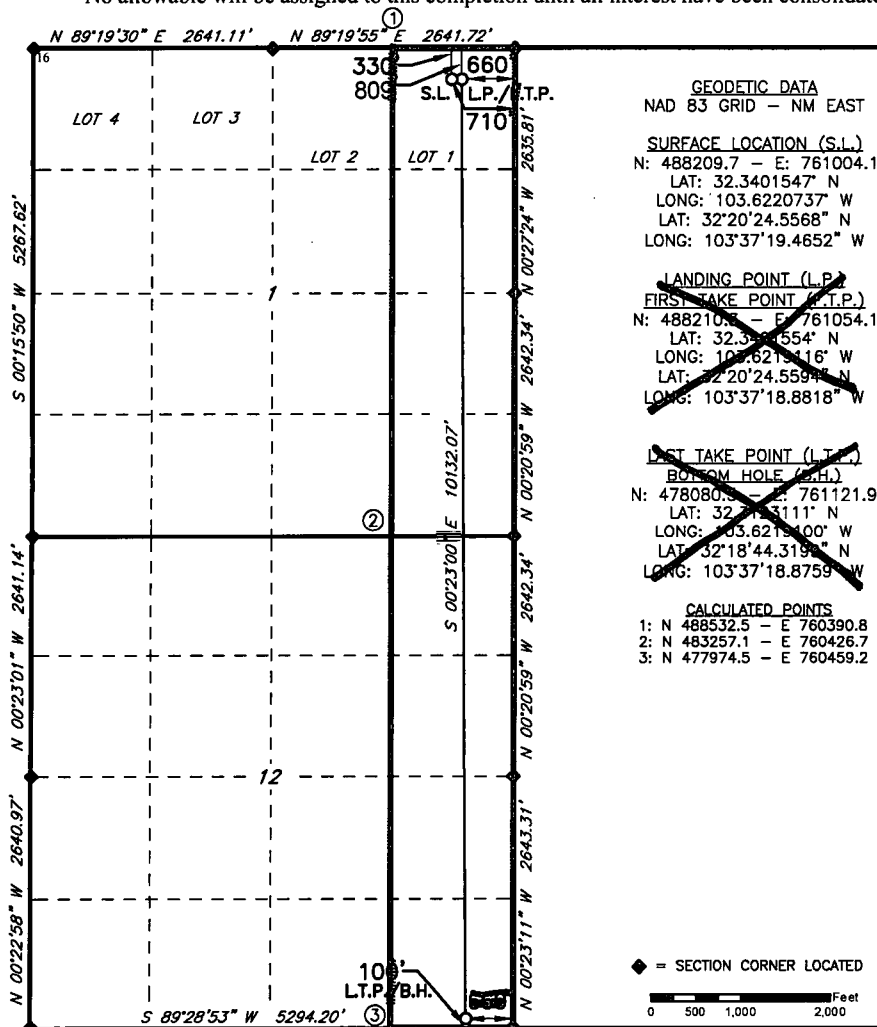


☐ AMENDED REPORT

## WELL LOCATION AND ACREAGE DEDICATION

<sup>1</sup> API Number <b>30-025-43737</b>		<sup>2</sup> Pool Code <b>17644</b>		<sup>3</sup> Pool Name <b>DIAMONDTAIL; BONE SPRING</b>					
<sup>4</sup> Property Code <b>317588</b>		<sup>5</sup> Property Name <b>CORIANDER AOC 1-12 STATE</b>						<sup>6</sup> Well Number <b>2H</b>	
<sup>7</sup> OGRID NO. <b>215099</b>		<sup>8</sup> Operator Name <b>CIMAREX ENERGY COMPANY</b>						<sup>9</sup> Elevation <b>3751'</b>	
<sup>10</sup> Surface Location									
UL or lot no. <b>1</b>	Section <b>1</b>	Township <b>23S</b>	Range <b>32E</b>	Lot Idn	Feet from the <b>330</b>	North/South line <b>NORTH</b>	Feet From the <b>710</b>	East/West line <b>EAST</b>	County <b>LEA</b>
<sup>11</sup> Bottom Hole Location If Different From Surface									
UL or lot no. <b>P</b>	Section <b>12</b>	Township <b>23S</b>	Range <b>32E</b>	Lot Idn	Feet from the <b>100</b>	North/South line <b>SOUTH</b>	Feet from the <b>654</b>	East/West line <b>EAST</b>	County <b>LEA</b>
<sup>12</sup> Dedicated Acres <b>319.95</b>		<sup>13</sup> Joint or Infill		<sup>14</sup> Consolidation Code		<sup>15</sup> Order No.			

No allowable will be assigned to this completion until all interest have been consolidated or a non-standard unit has been approved by the division.



## 17 OPERATOR CERTIFICATION

I hereby certify that the information contained herein is true and complete to the best of my knowledge and belief, and that this organization either owns a working interest or unleased mineral interest in the land including the proposed bottom hole location or has a right to drill this well at this location pursuant to a contract with an owner of such a mineral or working interest or to a voluntary pooling agreement or a compulsory pooling order heretofore entered by the division.

Signature [Signature] Date 1/17/18

Signature  
Terri Stathem  
Printed Name

**tstathem@cimarex.com**  
E-mail Address

## <sup>18</sup> SURVEYOR CERTIFICATION

*I hereby certify that the well location shown on this plat was plotted from field notes of actual surveys made by me or under my supervision, and that the same is true and correct to the best of my belief.*

**3-22-2017**

Date of Survey \_\_\_\_\_

Signature and Seal of Professional Sur

**10034**  
Certificate Number

REV: 7-27-18

**RRC-Job No.: LS1703166**